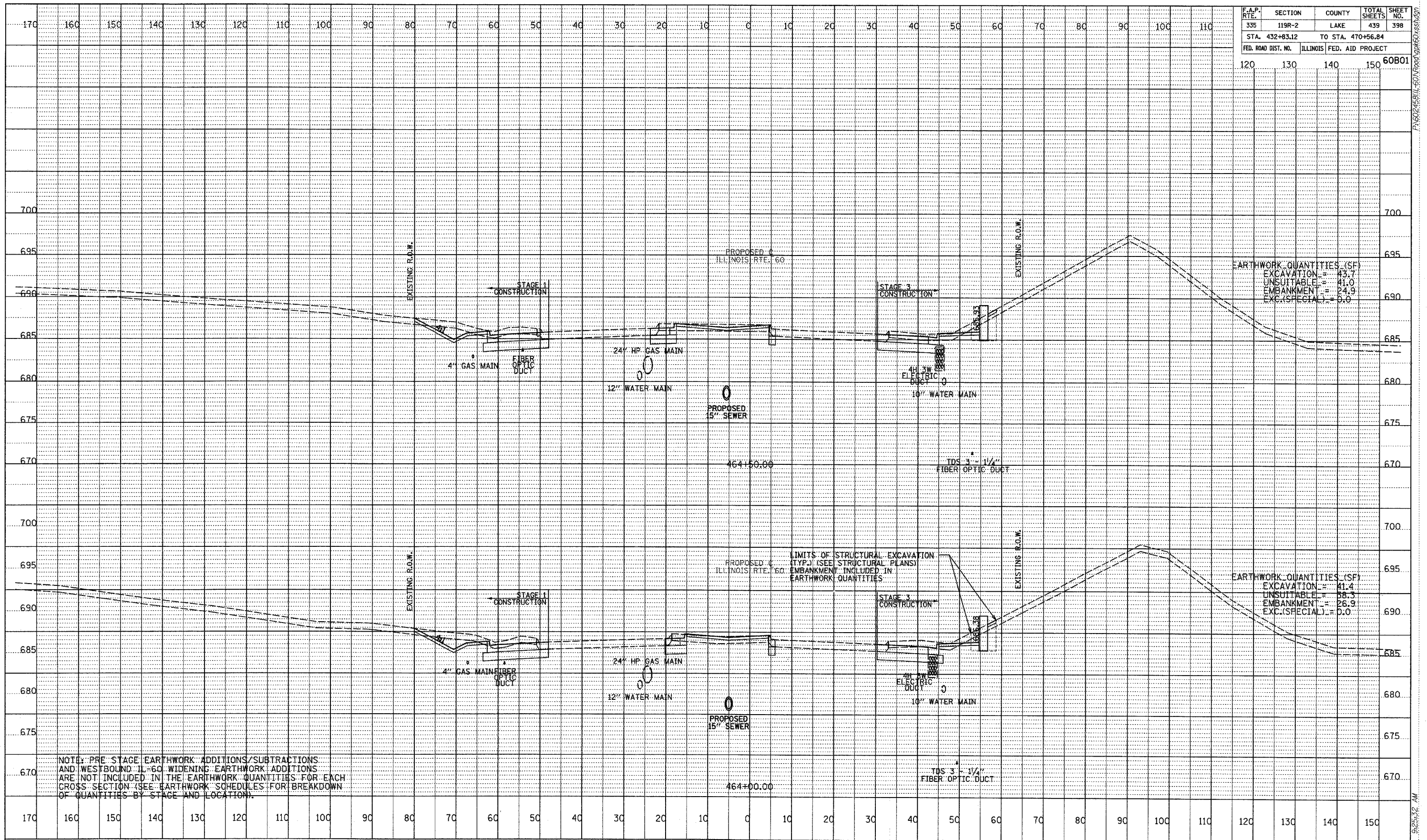


F.A.P. RTE.	SECTION	COUNTY	TOTAL SHEETS	SHEET NO.
335	119R-2	LAKE	439	398
STA. 432+83.12		TO STA. 470+56.84		
FED. ROAD DIST. NO.		ILLINOIS FED. AID PROJECT		
120	130	140	150	60B01

DATE	BY
PROFILER	SURVEYED
	PLOTTED
	DESIGNED
	INSTRUMENTED
	STRUCTURE NOTATIONS CHNO
	NO.



NOTE: PRE STAGE EARTHWORK ADDITIONS/SUBTRACTIONS AND WESTBOUND IL-60 WIDENING EARTHWORK ADDITIONS ARE NOT INCLUDED IN THE EARTHWORK QUANTITIES FOR EACH CROSS SECTION (SEE EARTHWORK SCHEDULES FOR BREAKDOWN OF QUANTITIES BY STAGE AND LOCATION).

TYLIN INTERNATIONAL



ILLINOIS RTE. 60 (TOWNLIN RD)
STA. 464+00 TO STA. 464+50

5/7/2007 9:25:32 AM