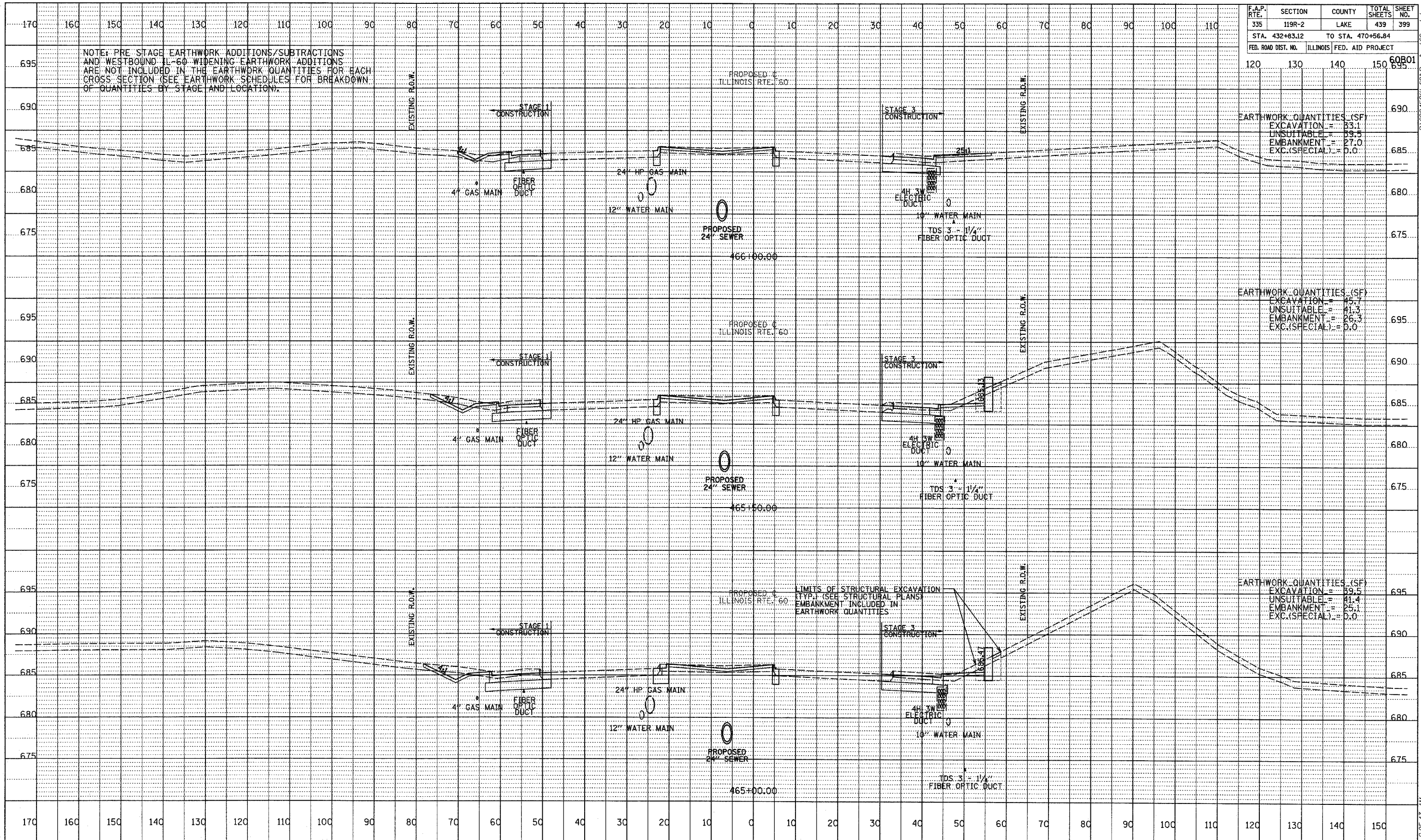


| F.A.P. RTE.         | SECTION  | COUNTY            | TOTAL SHEETS | SHEET NO. |
|---------------------|----------|-------------------|--------------|-----------|
| 335                 | 119R-2   | LAKE              | 439          | 399       |
| STA. 432+83.12      |          | TO STA. 470+56.84 |              |           |
| FED. ROAD DIST. NO. | ILLINOIS | FED. AID PROJECT  |              |           |

NOTE: PRE-STAGE EARTHWORK ADDITIONS/SUBTRACTIONS AND WESTBOUND IL-60 WIDENING EARTHWORK ADDITIONS ARE NOT INCLUDED IN THE EARTHWORK QUANTITIES FOR EACH CROSS SECTION (SEE EARTHWORK SCHEDULES FOR BREAKDOWN OF QUANTITIES BY STAGE AND LOCATION).



|         |  |
|---------|--|
| DATE    |  |
| BY      |  |
| PROJECT |  |
| REVISED |  |
| CHECKED |  |
| NO.     |  |

TYLINT INTERNATIONAL



ILLINOIS RTE. 60 (TOWNLIN RD)  
STA. 465+00 TO STA. 466+00

P:\6024581\601\Road\Ymk\60vsstg79

5/7/2007 9:25:43 AM