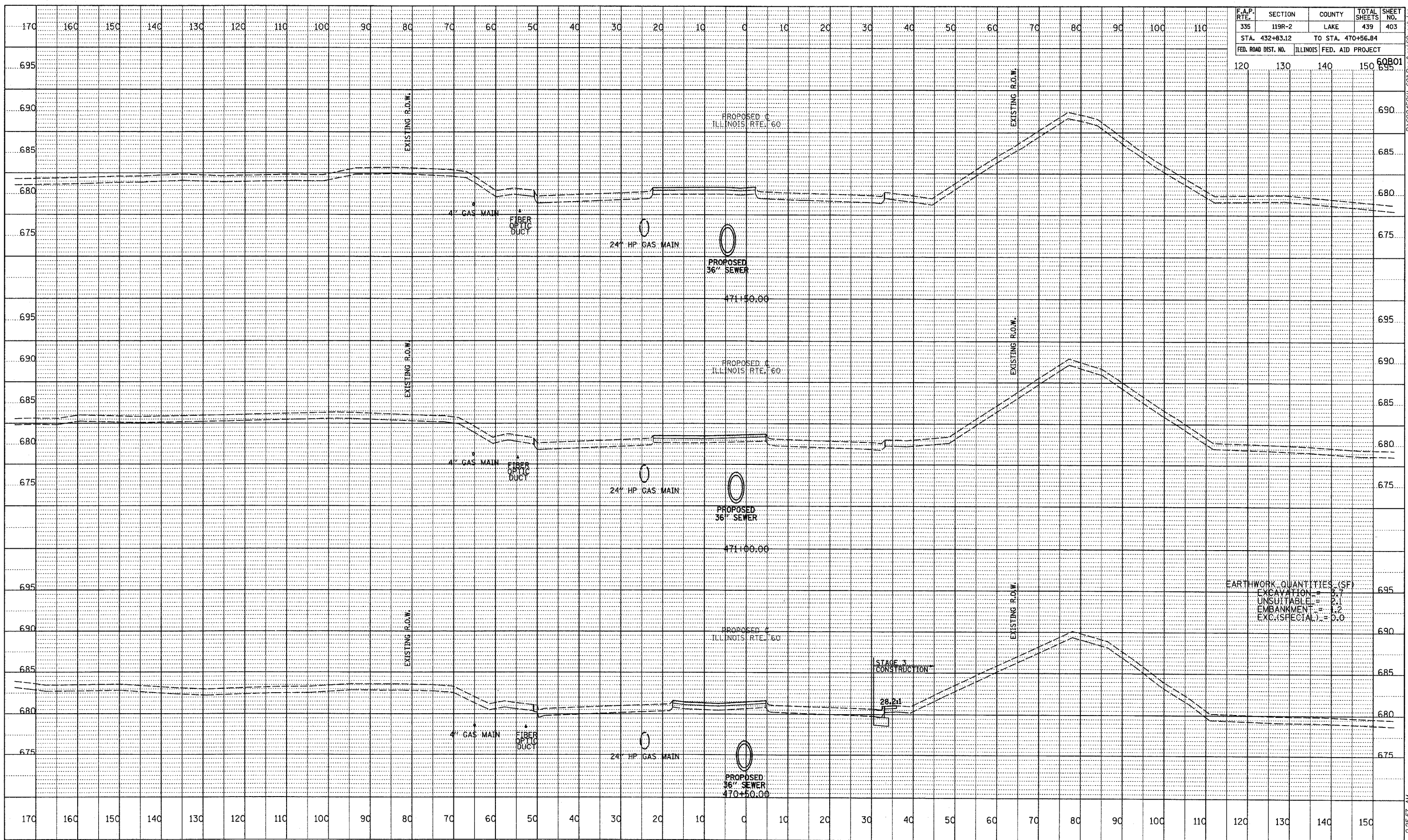


F.A.P. RTE.	SECTION	COUNTY	TOTAL SHEETS	SHEET NO.
335	119R-2	LAKE	439	403
STA. 432+83.12		TO STA. 470+56.84		
FED. ROAD DIST. NO.	ILLINOIS FED. AID PROJECT		60B01	695



BY	DATE
REVISIONS	
PLANNED	
DESIGNED	
CHECKED	
STRUCTURE	
NOTATIONS	
NO.	

EARTHWORK QUANTITIES (SF)
 EXCAVATION = 2.7
 UNSUITABLE = 2.1
 EMBANKMENT = 2.2
 EXC. (SPECIAL) = 0.0



TYLIN INTERNATIONAL

ILLINOIS RTE. 60 (TOWNLIN RD)
 STA. 470+50 TO STA. 471+50

F:\6024581\601\Road\Map60\601.dwg 5/7/2007 9:55:57 AM