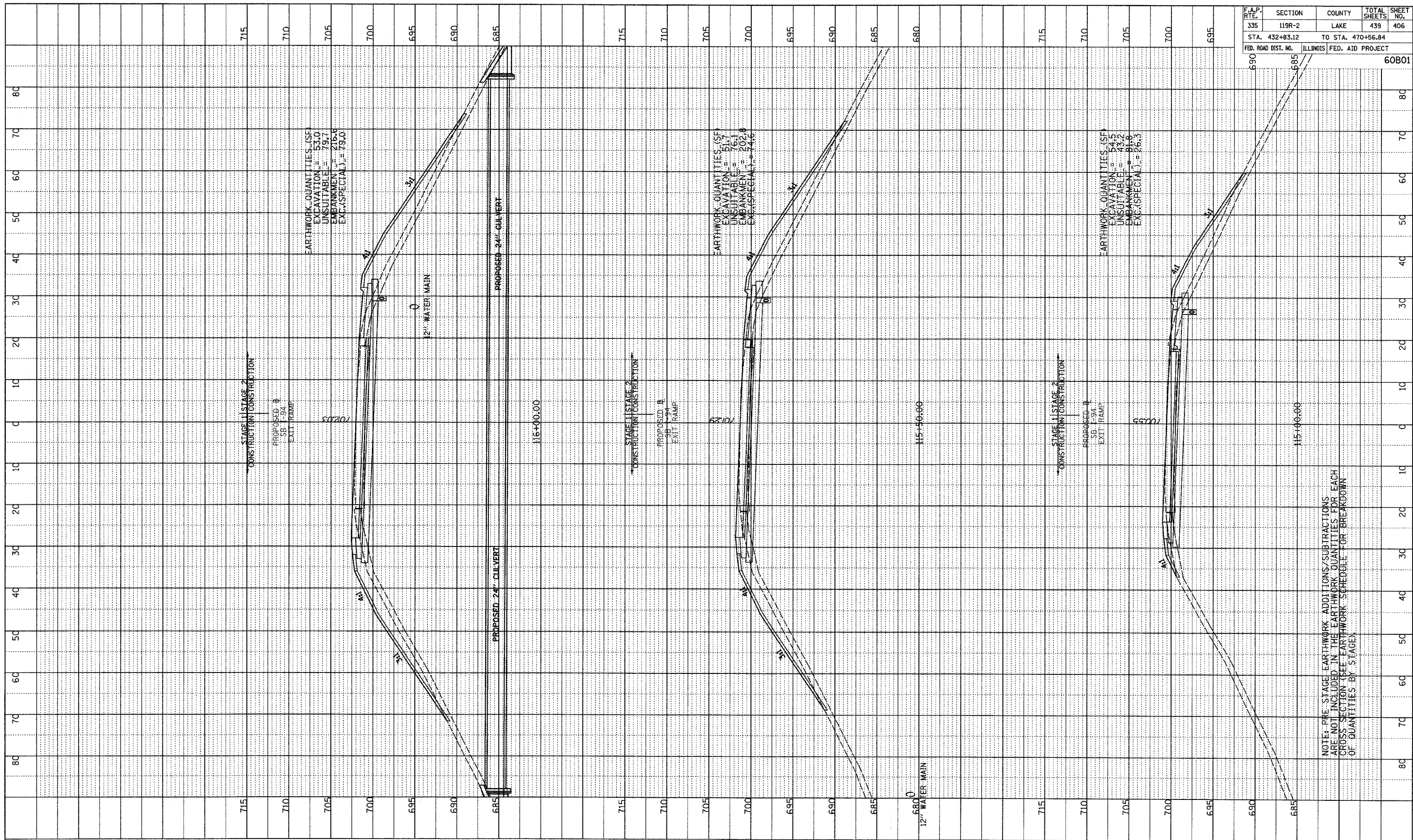
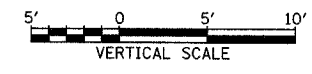
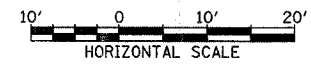


PROFILE	DESIGNED	BY	DATE
NOTE BOOK	PLOTTED/REVIEWED		
NO.	DATE		
	STRUCTURE NOTATIONS GRID		



F.A.P. RTE.	SECTION	COUNTY	TOTAL SHEETS	SHEET NO.
335	119R-2	LAKE	439	406
STA. 432+83.12		TO STA. 470+56.84		
FED. ROAD DIST. NO.	ILLINOIS	FED. AID PROJECT	60B01	

TYLIN INTERNATIONAL



SB I-94 EXIT RAMP
STA. 115+00 TO STA. 116+00

10-4-23 AM 5/7/2007

NOTE: PRE-STAGE EARTHWORK ADDITIONS/SUBTRACTIONS ARE NOT INCLUDED IN THE EARTHWORK QUANTITIES FOR EACH CROSS SECTION (SEE EARTHWORK SCHEDULE FOR BREAKDOWN OF QUANTITIES BY STAGE).