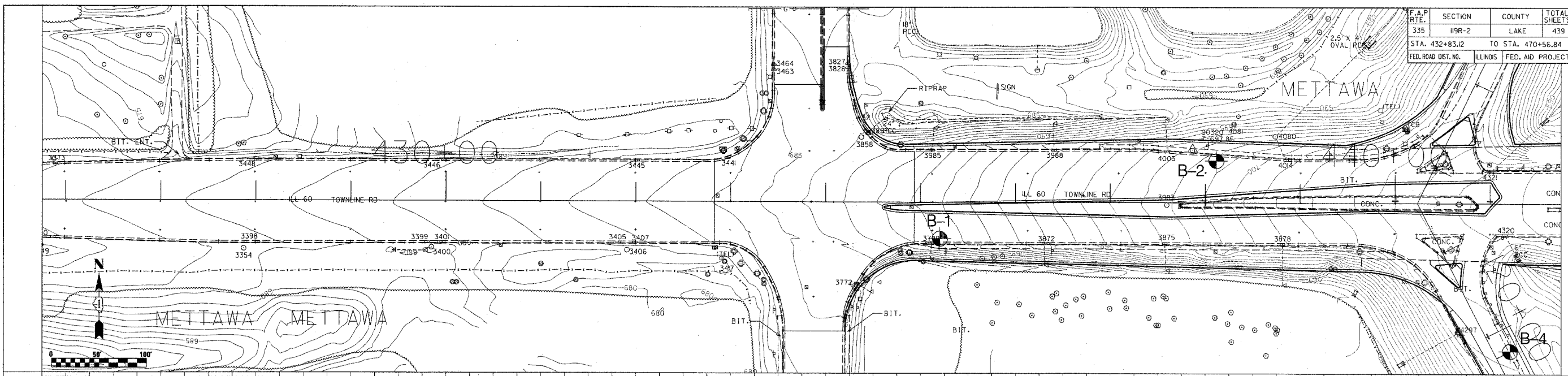
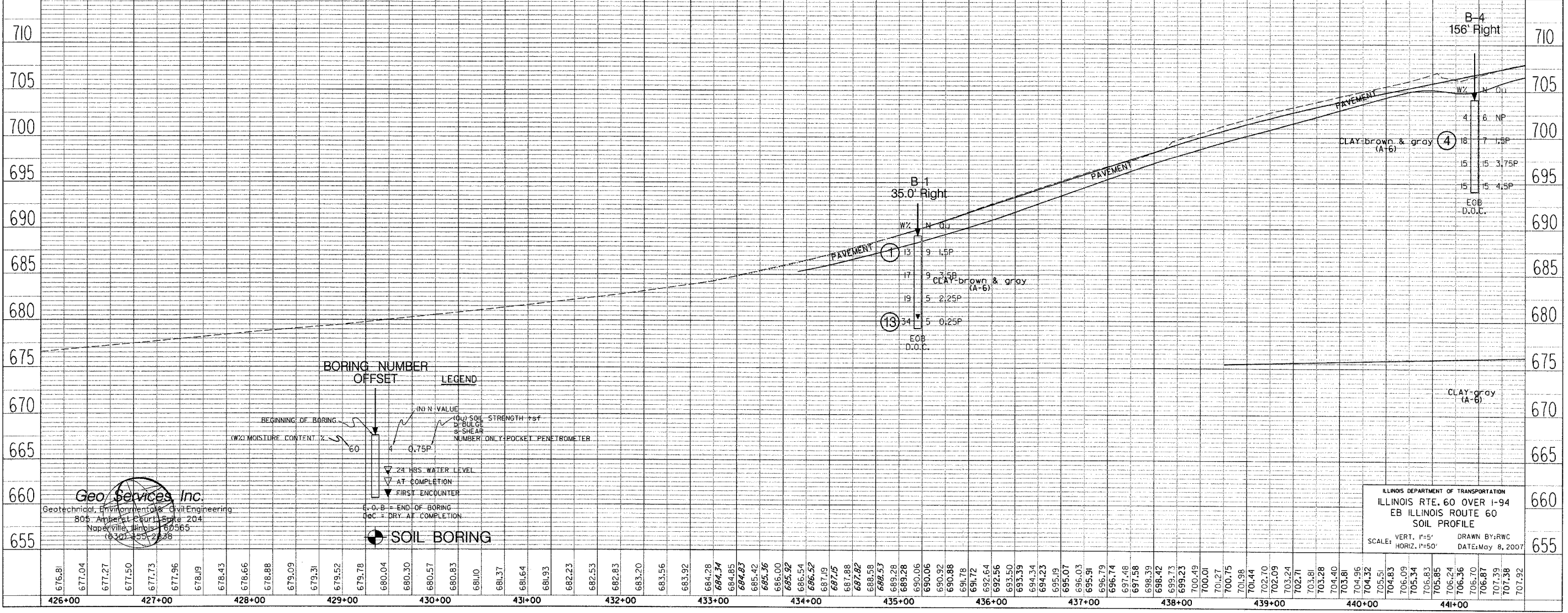


F.A.P. RTE.	SECTION	COUNTY	TOTAL SHEETS	SHEET NO.
335	119R-2	LAKE	439	439A
STA. 432+83.12		TO STA. 470+56.84		
FED. ROAD DIST. NO.		ILLINOIS FED. AID PROJECT 60B01		



PLAN	DATE	BY
REVISIONS		
NO.	DATE	BY
1		



PROFILE	DATE	BY
REVISIONS		
NO.	DATE	BY
1		

**Geo Services Inc.**  
 Geotechnical, Environmental & Civil Engineering  
 805 Appleton Court, Suite 204  
 Naperville, Illinois 60565  
 (630) 355-2238

**BORING NUMBER OFFSET**

**LEGEND**

- (N) N VALUE
- (U) SOIL STRENGTH  $\pm$ sf
- (M) MOISTURE CONTENT %
- (S) SHEAR
- (P) NUMBER ONLY-POCKET PENETROMETER
- ▽ 24 HRS WATER LEVEL
- ▽ AT COMPLETION
- ▽ FIRST ENCOUNTER
- EOB = END OF BORING
- D.O.C. = DRY AT COMPLETION
- SOIL BORING

ILLINOIS DEPARTMENT OF TRANSPORTATION  
 ILLINOIS RTE. 60 OVER I-94  
 EB ILLINOIS ROUTE 60  
 SOIL PROFILE

SCALE: VERT. 1"=5'  
 HORIZ. 1"=50'

DRAWN BY: RWC  
 DATE: May 8, 2007