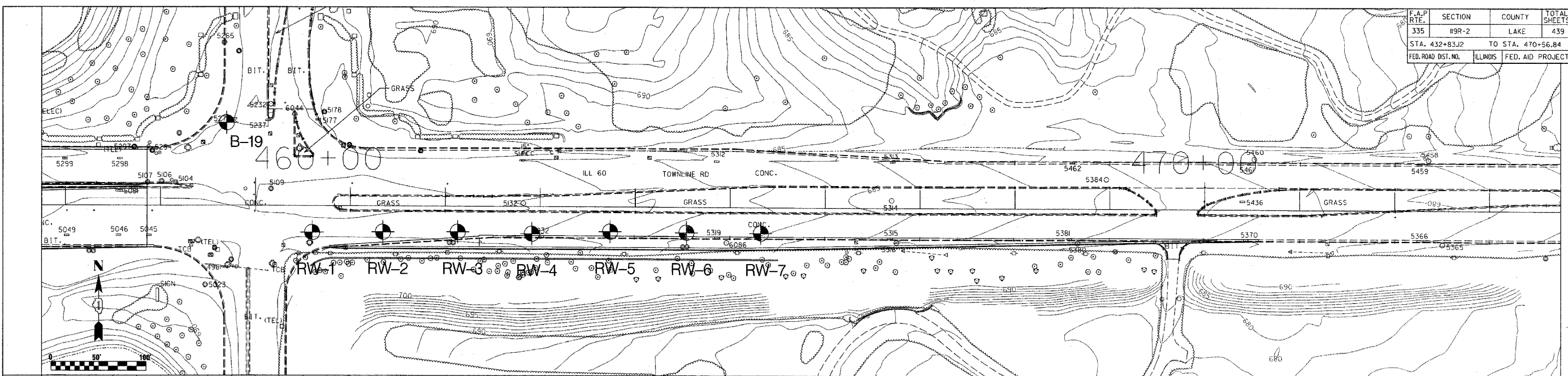
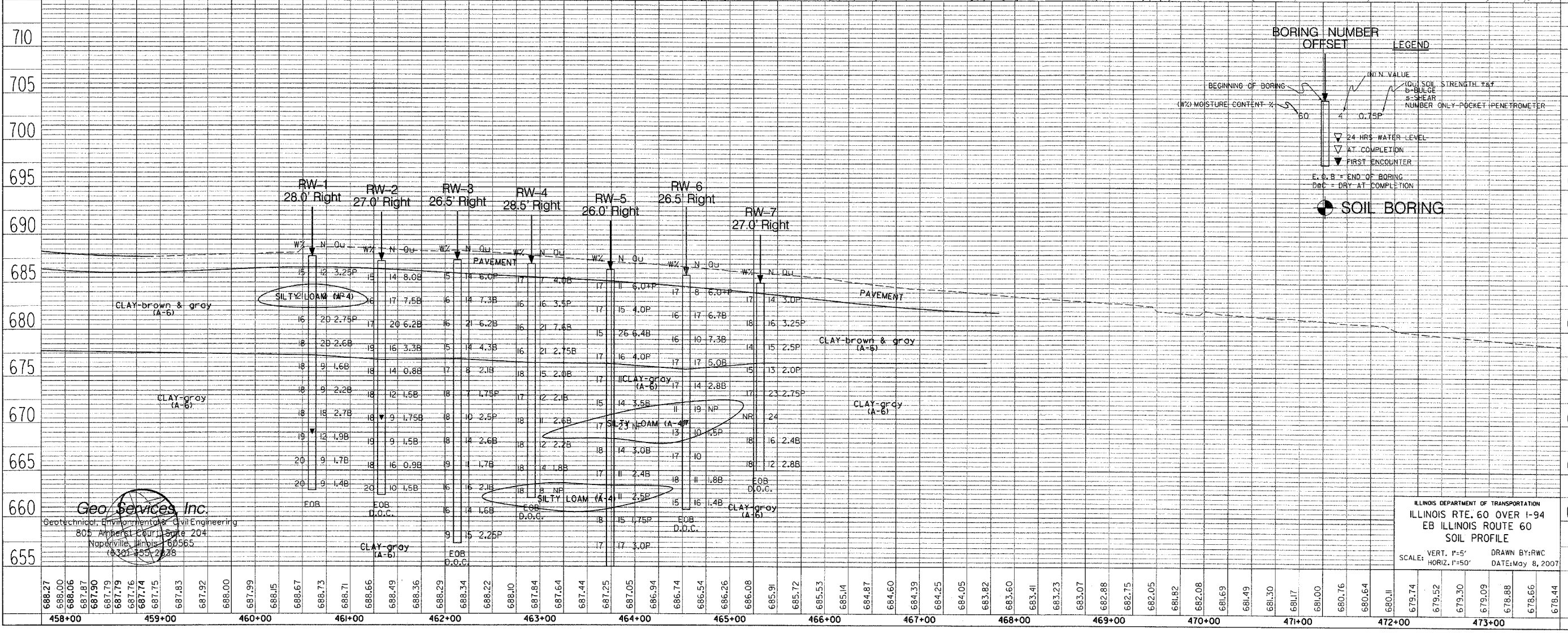


F.A.P. RTE.	SECTION	COUNTY	TOTAL SHEETS	SHEET NO.
335	119R-2	LAKE	439	439C
STA. 432+83.12		TO STA. 470+56.84		
FED. ROAD DIST. NO.	ILLINOIS	FED. AID PROJECT 60B01		

PLAN	SURVEYED	BY	DATE
	NOTE BOOK		
	ALIGNED		
	CHECKED		
	PT. OF WAY CHECKED		
	NO. _____		



PROFILE	SURVEYED	BY	DATE
	NOTE BOOK		
	ALIGNED		
	CHECKED		
	PT. OF WAY CHECKED		
	NO. _____		



**BORING NUMBER**  
**OFFSET**

**LEGEND**

- ▽ 24 HRS. WATER LEVEL
- ▽ AT COMPLETION
- ▽ FIRST ENCOUNTER
- E.O.B. = END OF BORING
- D.O.C. = DRY AT COMPLETION
- SOIL BORING

(W) MOISTURE CONTENT %  
 (N) VALUE  
 (Q) SOIL STRENGTH TST  
 (S) SHEAR  
 (T) NUMBER ONLY-POCKET PENETROMETER

**Geo Services Inc.**  
 Geotechnical, Environmental & Civil Engineering  
 805 Amherst Court, Suite 204  
 Naperville, Illinois 60565  
 (630) 355-2638

ILLINOIS DEPARTMENT OF TRANSPORTATION  
 ILLINOIS RTE. 60 OVER I-94  
 EB ILLINOIS ROUTE 60  
 SOIL PROFILE  
 SCALE: VERT. 1"=5'  
 HORIZ. 1"=50'  
 DRAWN BY: RWC  
 DATE: May 8, 2007