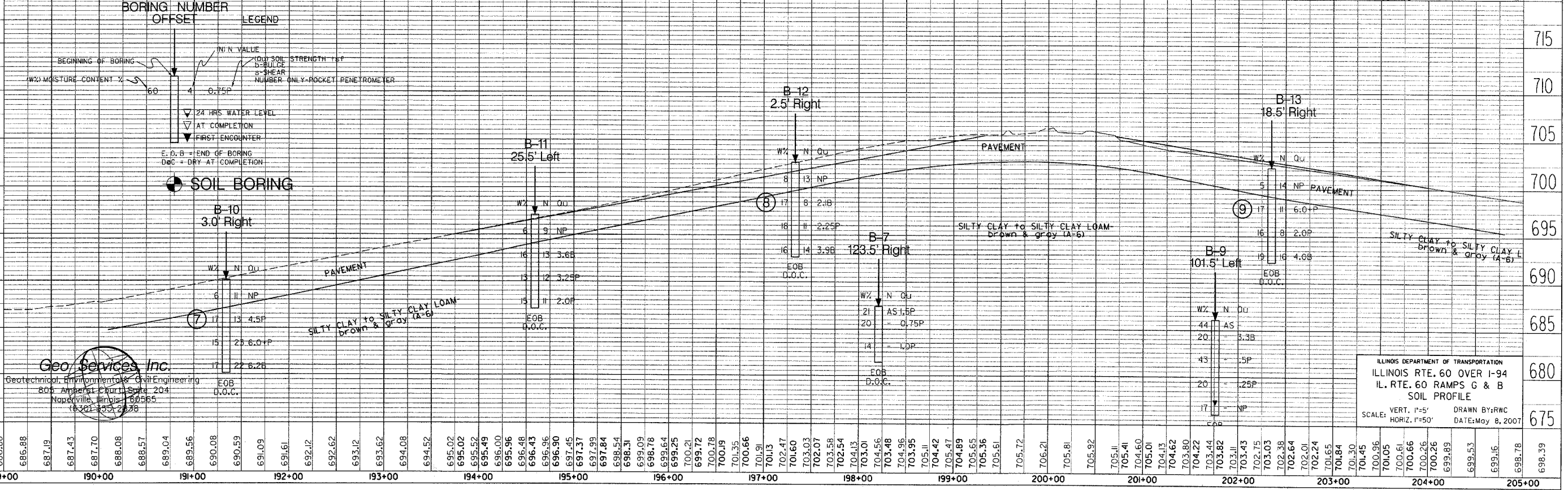
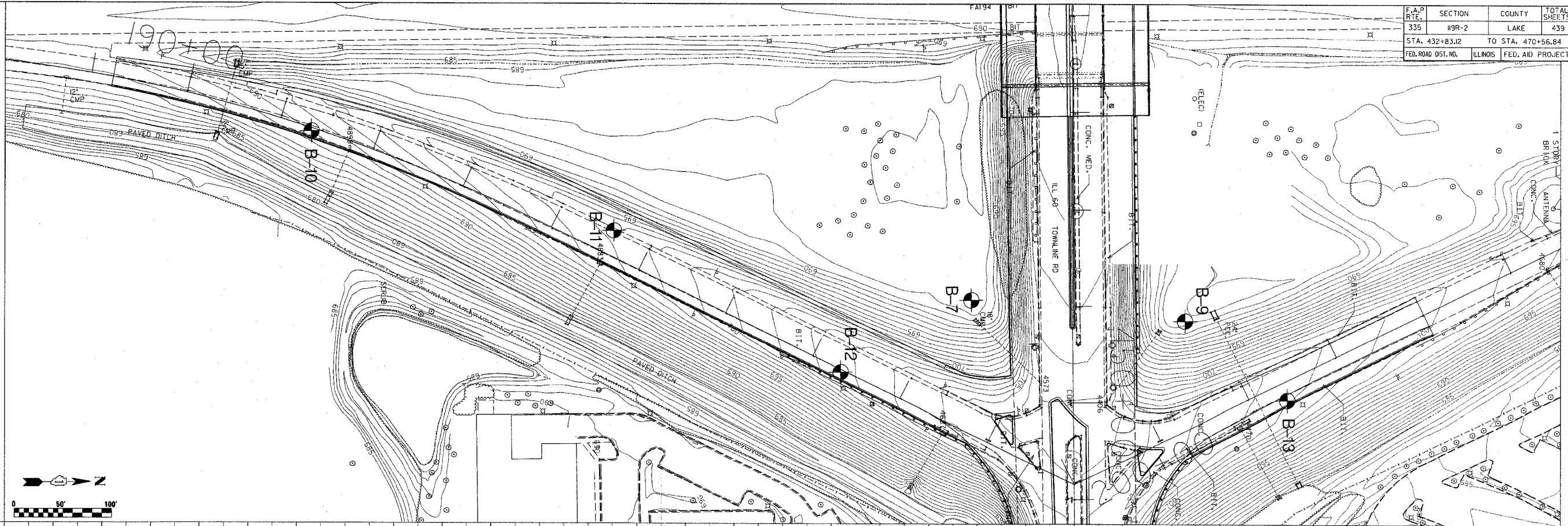


F.A.P. RTE.	SECTION	COUNTY	TOTAL SHEETS	SHEET NO.
335	WBR-2	LAKE	439	439H
STA. 432+83.12		TO STA. 470+56.84		
FED. ROAD DIST. NO.	ILLINOIS	FED. AID PROJECT 60B01		

PLAN	SURVEYED	BY	DATE
NOTE BOOK NO.	ALIGNED		
	BY WAY CHECKED		
	AND FILE NAME		



BORING NUMBER
OFFSET

LEGEND

- ▽ 24 HRS WATER LEVEL
- ▽ AT COMPLETION
- ▽ FIRST ENCOUNTER
- E.O.B = END OF BORING
- D.O.C = DRY AT COMPLETION

SOIL BORING

W% MOISTURE CONTENT %

60

4

0.75P

(U) SOIL STRENGTH TEST

5-BULGE

3-SHEAR

NUMBER ONLY-POCKET PENETROMETER

Geo Services Inc.
Geotechnical, Environmental & Civil Engineering
805 Amber Court, Suite 204
Naperville, Illinois 60565
(630) 355-2828

ILLINOIS DEPARTMENT OF TRANSPORTATION
ILLINOIS RTE. 60 OVER I-94
IL. RTE. 60 RAMPS G & B
SOIL PROFILE
SCALE: VERT. 1"=5'
HORIZ. 1"=50'
DRAWN BY: RWC
DATE: May 8, 2007