

CONTRACT NO. 60B82

F.A.U. ROUTE NO.	SECTION	COUNTY	TOTAL SHEETS	SHEET NO.
1320	581EXT-BR	COOK	46	1

D-91-433-06

47

STATE OF ILLINOIS  
DEPARTMENT OF TRANSPORTATION  
DIVISION OF HIGHWAYS  
**PLANS FOR PROPOSED  
HIGHWAY**

FAU 1320 (IL 58)  
SECTION: 581 EXT - BR  
OVER POPLAR CREEK & AT IL 59  
BRIDGE BEAM REPLACEMENT, NEW DECK  
AND RESURFACING (3P)  
COOK COUNTY  
C-91-433-06

FOR INDEX OF SHEETS, SEE SHEET NO. 2

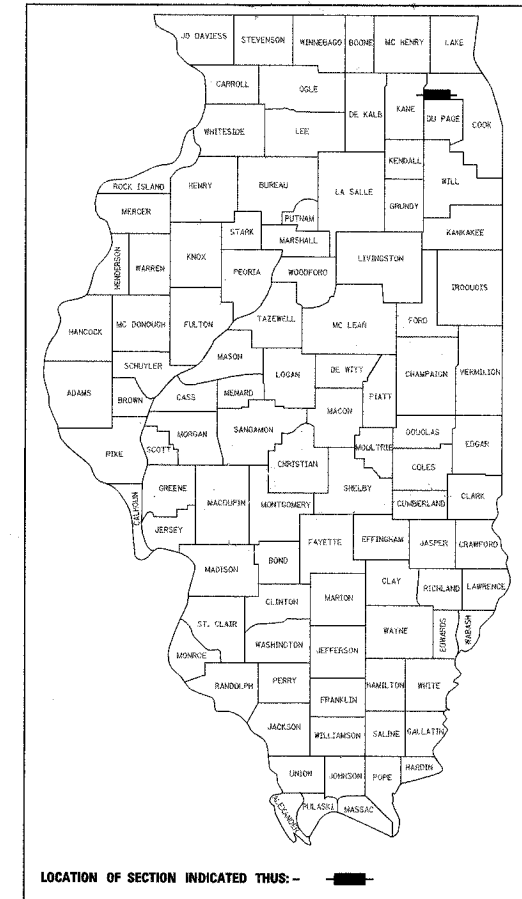
TRAFFIC DATA

EXISTING ADT  
IL 59 37,200 (2005)  
IL 58 16,700 (2005)

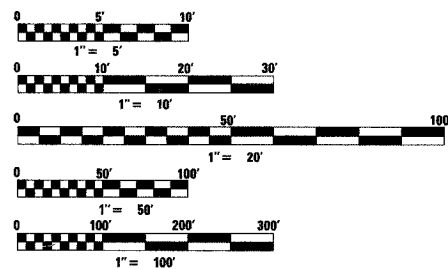
SPEED LIMIT  
IL 59 45 MPH  
IL 58 45 MPH

PROJECT LOCATED IN  
UNINCORPORATED COOK  
COUNTY, HANOVER TOWNSHIP

SN 016-2087  
TWO SPAN PRECAST PRESTRESSED  
CONCRETE DECK BEAM STRUCTURE  
CARRYING F.A.U. 1320 (IL 58 GOLF  
ROAD) OVER POPLAR CREEK

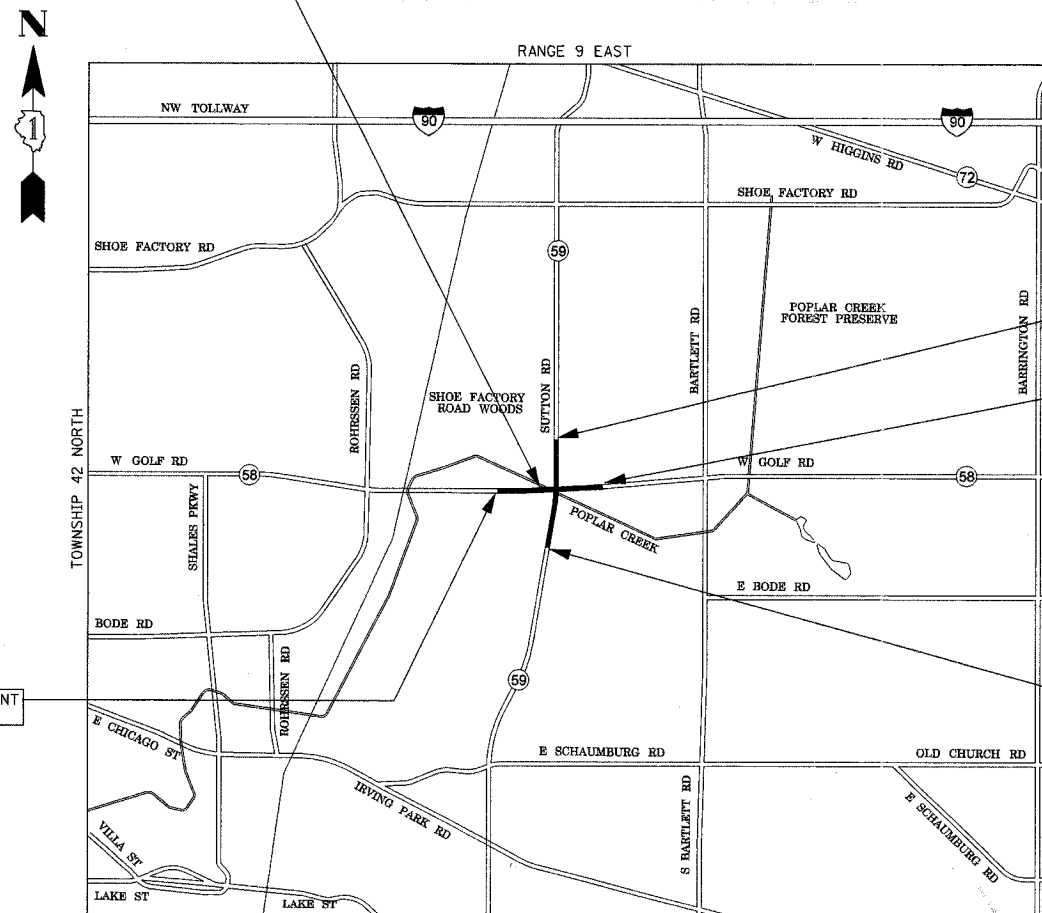


LOCATION OF SECTION INDICATED THUS: -



FULL SIZE PLANS HAVE BEEN PREPARED USING STANDARD  
ENGINEERING SCALES, REDUCED SIZED PLANS WILL NOT  
CONFORM TO STANDARD SCALES, IN MAKING MEASUREMENTS  
ON REDUCED PLANS, THE ABOVE SCALES MAY BE USED.

J.U.L.I.E. JOINT UTILITY LOCATION INFORMATION  
FOR EXCAVATION 1-800-892-0123

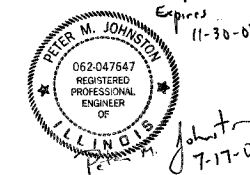


BEGIN IMPROVEMENT  
STA. 1113+72.4

IMPROVEMENT LIMIT  
STA. 2005+76

END IMPROVEMENT  
STA. 1124+03

IMPROVEMENT LIMIT  
STA. 1996+30



STATE OF ILLINOIS  
DEPARTMENT OF TRANSPORTATION  
DIVISION OF HIGHWAYS

SUBMITTED July 17, 2007  
Diane O'Keefe  
DEPUTY DIRECTOR OF HIGHWAYS, REGION 1 ENGINEER

August 17, 2007  
Eric E. Barak  
ENGINEER OF DESIGN AND ENVIRONMENT

August 17, 2007  
Nickon R. See  
DIRECTOR, DIVISION OF HIGHWAYS

PRINTED BY THE AUTHORITY OF  
THE STATE OF ILLINOIS

GRAEF, ANHALT, SCHLOEMER & ASSOCIATES, INC.  
ENGINEERS & SCIENTISTS  
8501 W. Higgins Road, Suite 280  
Chicago, Illinois 60631  
(773) 399-0112

DISTRICT ONE PLAN PREPARATION ENGINEER: KEN ENG (847) 705-4247

CONTRACT NO. 60B82

GROSS AND NET LENGTH OF PROJECT: 1,031 FT (0.195 MI)