

CONTRACT NO. 60B82

| | | | | |
|---------------------|-----------|---------------------------|--------------|-----------|
| F.A.U. RTE. | SECTION | COUNTY | TOTAL SHEETS | SHEET NO. |
| 1320 | 581EXT-BR | COOK | 46 | 6 |
| STA. | | TO STA. | | |
| FED. ROAD DIST. NO. | | ILLINOIS FED. AID PROJECT | | |

SUGGESTED CONSTRUCTION STAGING

PRE-STAGE BRIDGE RECONSTRUCTION

PLACE TEMPORARY PAVEMENT MARKING, SIGNING AND TRAFFIC CONTROL ITEMS
 INSTALL TEMPORARY TRAFFIC SIGNALS
 REMOVE PAVED MEDIANS AND CONSTRUCT TEMPORARY PAVEMENTS
 PLACE STAGE 1 PAVEMENT MARKINGS, SIGNING AND TRAFFIC CONTROL

STAGE 1 BRIDGE RECONSTRUCTION

SHIFT TRAFFIC TO STAGE 1 CONFIGURATION
 REMOVE STAGE 1 PORTION OF BRIDGE AND ADJACENT PAVEMENTS
 PLACE BEAMS AND CONSTRUCT CONCRETE OVERLAY, BRIDGE APPROACH PAVEMENT, BRIDGE APPROACH PAVEMENT CONNECTOR (PCC) AND ADJACENT CONCRETE CURB AND GUTTER.
 PLACE TEMPORARY PAVEMENT ON DECK BEAMS.
 PLACE STAGE 2 PAVEMENT MARKINGS, SIGNING AND TRAFFIC CONTROL.
 SHIFT TEMPORARY TRAFFIC SIGNAL HEADS TO STAGE 2 CONFIGURATION

STAGE 2 BRIDGE RECONSTRUCTION

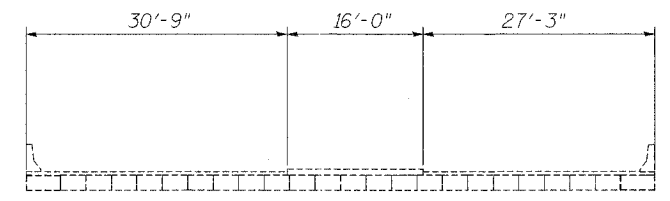
SHIFT TRAFFIC TO STAGE 2 CONFIGURATION
 REMOVE STAGE 2 PORTION OF BRIDGE AND ADJACENT PAVEMENTS
 PLACE BEAMS AND CONSTRUCT CONCRETE OVERLAY, BRIDGE APPROACH PAVEMENT, BRIDGE APPROACH PAVEMENT CONNECTOR (PCC) AND ADJACENT CONCRETE CURB AND GUTTER.
 PLACE POST STAGE PAVEMENT MARKINGS, SIGNING AND TRAFFIC CONTROL.
 SHIFT TEMPORARY TRAFFIC SIGNAL HEADS TO POST STAGE CONFIGURATION

POST STAGE BRIDGE RECONSTRUCTION

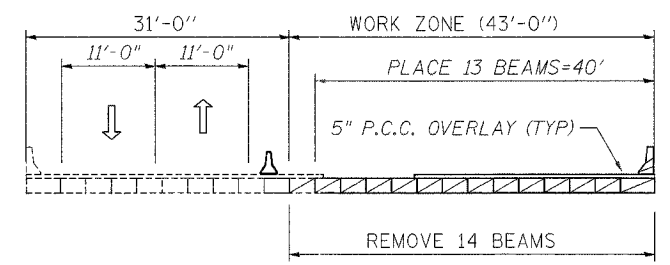
SHIFT TRAFFIC TO POST STAGE CONFIGURATION
 REMOVE TEMPORARY PAVEMENTS AND CONSTRUCT CONCRETE MEDIANS
 ACTIVATE PERMANENT TRAFFIC SIGNALS AND REMOVE TEMPORARY TRAFFIC SIGNALS.

HMA SURFACE REMOVAL AND RESURFACING

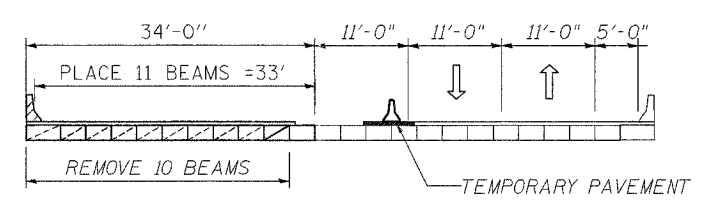
MILLING AND RESURFACING WORK WILL BE CONSTRUCTED UTILIZING HIGHWAY STANDARD 701421



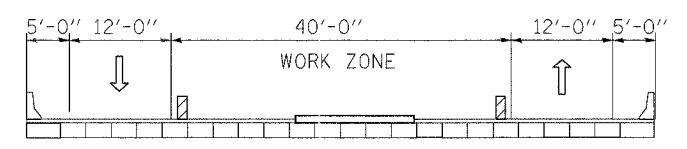
EXISTING



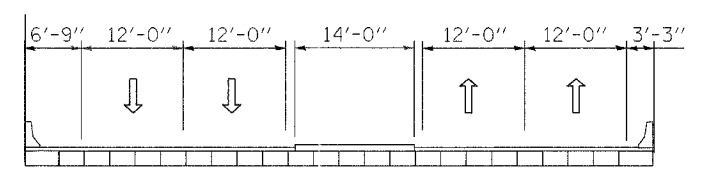
STAGE I



STAGE II



PRE-STAGE / POST STAGE



PROPOSED FINAL CONFIGURATION

LEGEND

- DIRECTION OF TRAFFIC
- ▲ TEMPORARY CONCRETE BARRIER WALL
- ▨ DECK BEAM REMOVAL LIMIT
- ▩ DRUMS @50' CENTERS
- ▨ TEMPORARY PAVEMENT
- EXISTING
- CONSTRUCTION
- COMPLETED

| REVISIONS | |
|-----------|------|
| NAME | DATE |
| | |
| | |
| | |
| | |
| | |
| | |
| | |
| | |
| | |
| | |

ILLINOIS DEPARTMENT OF TRANSPORTATION
 FAU 1320 (IL 58 GOLF ROAD)
 OVER POPLAR CREEK
 MOT TYPICAL SECTIONS
 DATE: 7/20/07
 SCALE: NOT TO SCALE
 DRAWN BY: RG
 CHECKED BY: RJS