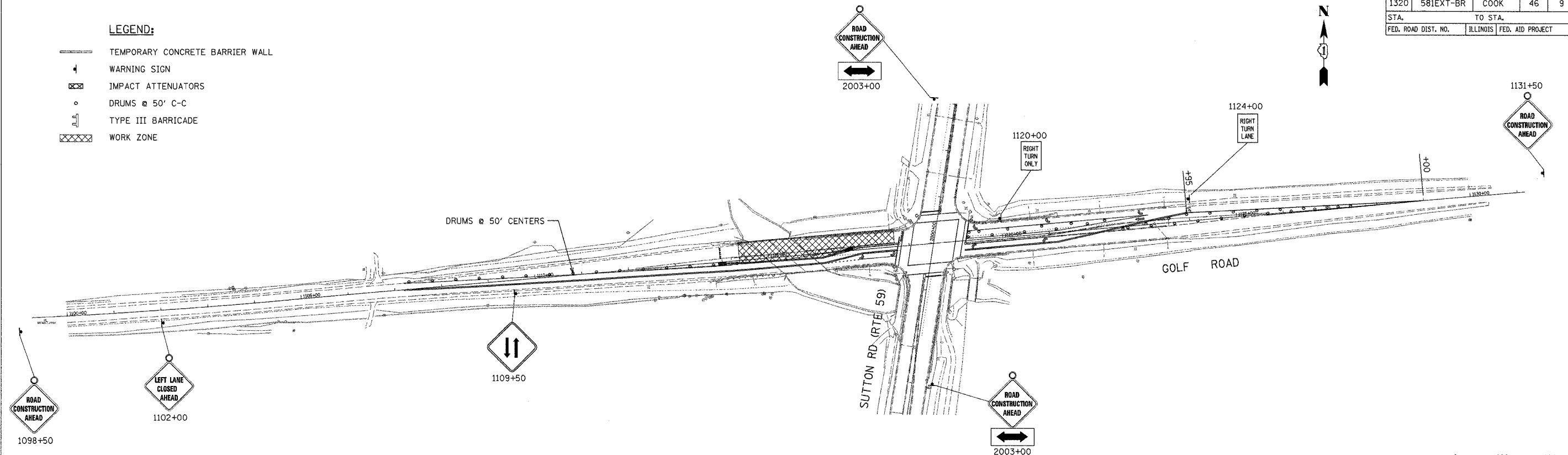


CONTRACT NO. 60B82

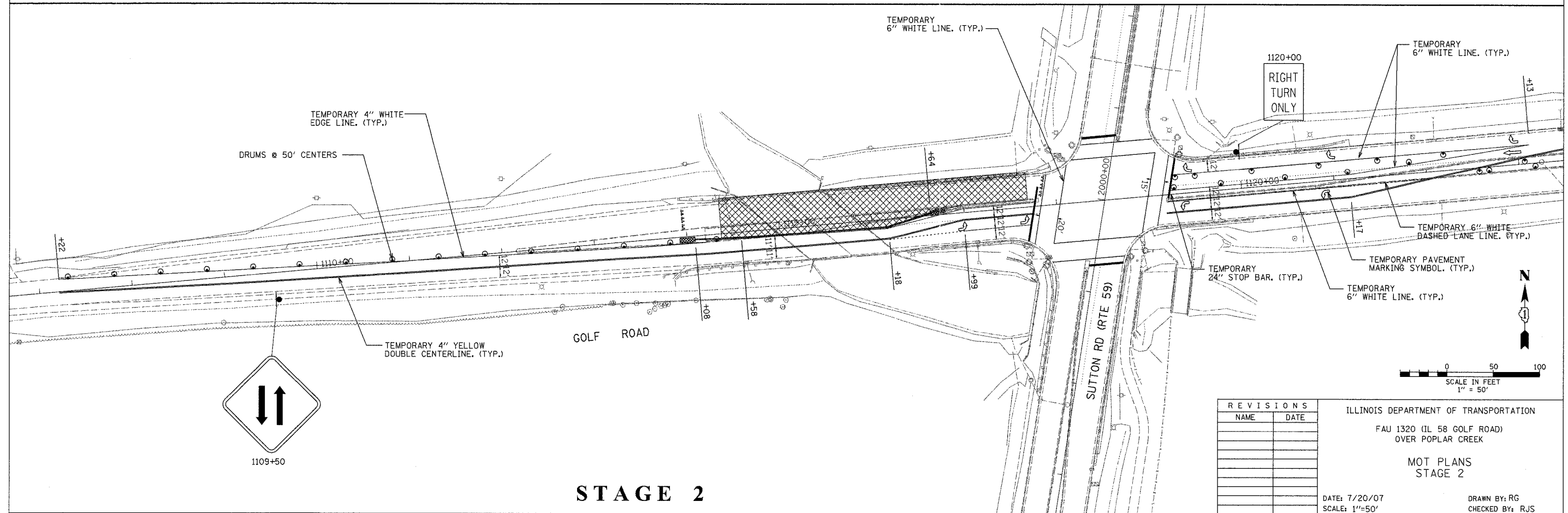
F.A.U. RTE.	SECTION	COUNTY	TOTAL SHEETS	SHEET NO.
1320	581EXT-BR	COOK	46	9
STA.	TO STA.			
FED. ROAD DIST. NO.	ILLINOIS	FED. AID PROJECT		

LEGEND:

- TEMPORARY CONCRETE BARRIER WALL
- ⚠ WARNING SIGN
- ▣ IMPACT ATTENUATORS
- DRUMS @ 50' C-C
- ⚡ TYPE III BARRICADE
- ▨ WORK ZONE



STAGE 2



STAGE 2

REVISIONS	
NAME	DATE

ILLINOIS DEPARTMENT OF TRANSPORTATION
 FAU 1320 (IL 58 GOLF ROAD)
 OVER POPLAR CREEK
**MOT PLANS
 STAGE 2**
 DATE: 7/20/07
 SCALE: 1"=50'
 DRAWN BY: RG
 CHECKED BY: RJS