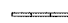

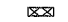
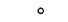


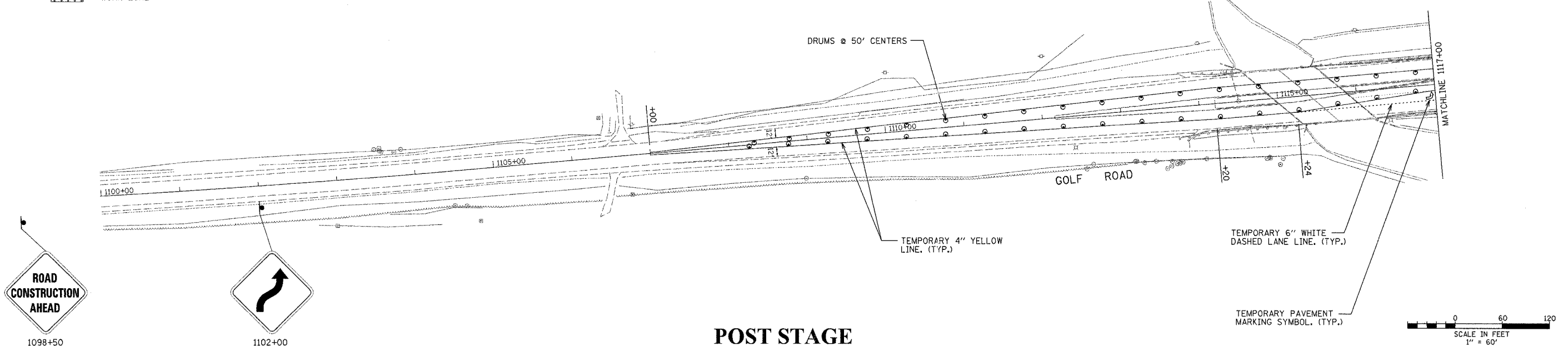
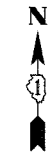


CONTRACT NO. 60882

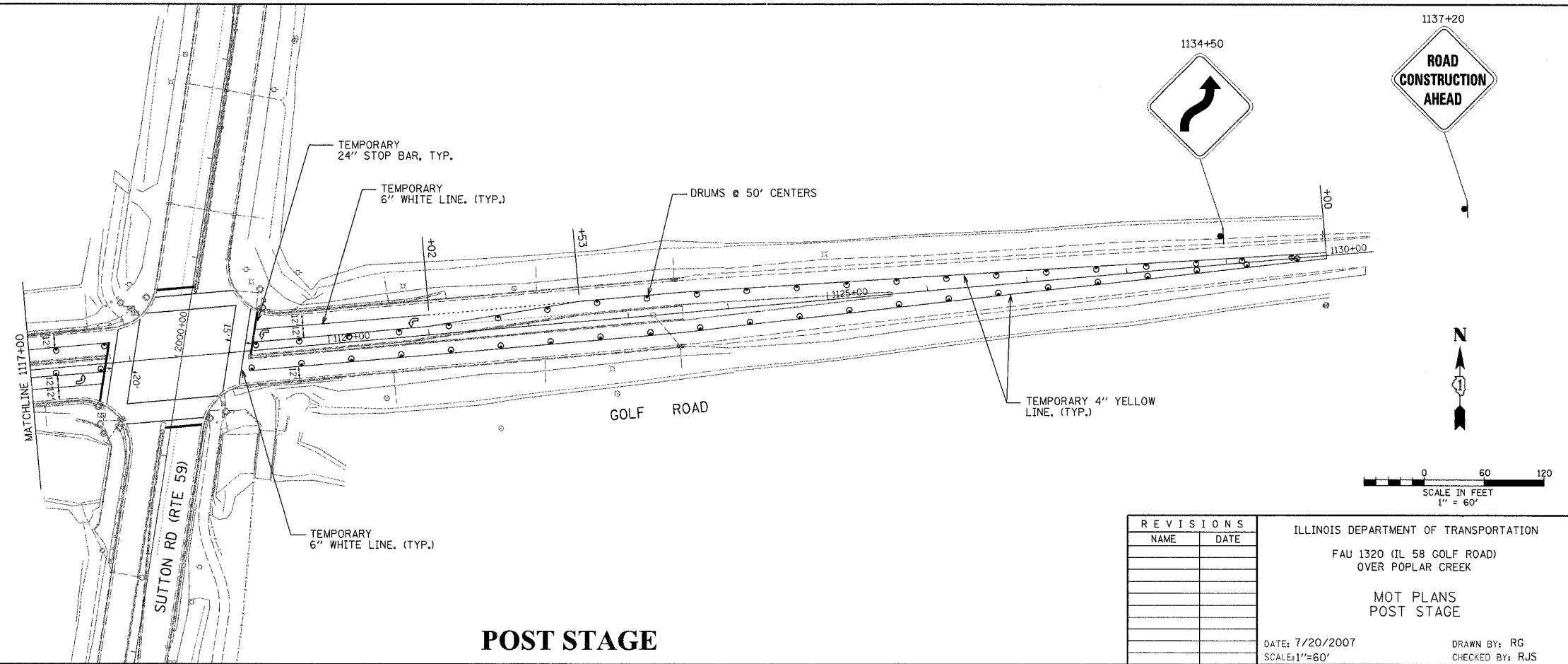
F.A.U. RTE.	SECTION	COUNTY	TOTAL SHEETS	SHEET NO.
1320	581EXT-BR	COOK	46	10
STA. 1320		TO STA.		
FED. ROAD DIST. NO.		ILLINOIS	FED. AID PROJECT	

LEGEND:

-  TEMPORARY CONCRETE BARRIER WALL
-  WARNING SIGN
-  IMPACT ATTENUATORS
-  DRUMS @ 50' C-C
-  TYPE III BARRICADE
-  WORK ZONE



POST STAGE



POST STAGE

REVISIONS	
NAME	DATE

ILLINOIS DEPARTMENT OF TRANSPORTATION
 FAU 1320 (IL 58 GOLF ROAD)
 OVER POPLAR CREEK
 MOT PLANS
 POST STAGE
 DATE: 7/20/2007
 SCALE: 1"=60'
 DRAWN BY: RG
 CHECKED BY: RJS