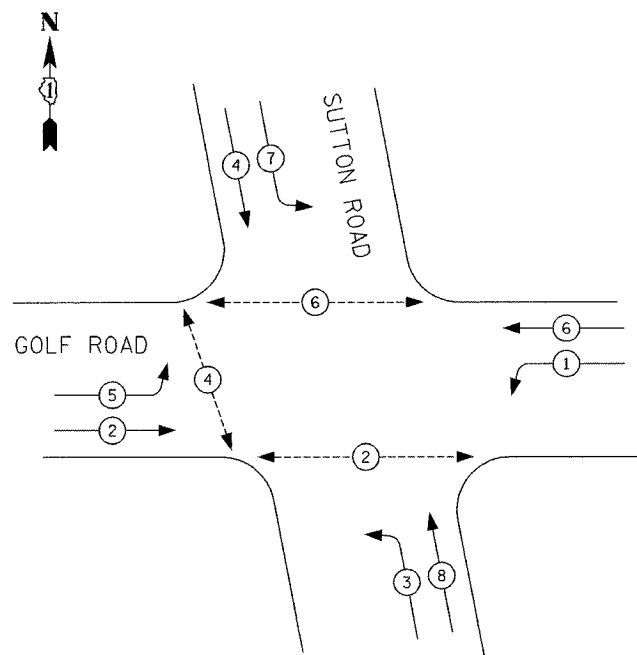


F.A.U. RTE.	SECTION	COUNTY	TOTAL SHEETS	SHEET NO.
1320	581EXT-BR	COOK	46	15
FED. ROAD DIST. NO.		ILLINOIS	FED. AID PROJECT	

CONTROLLER SEQUENCE IV

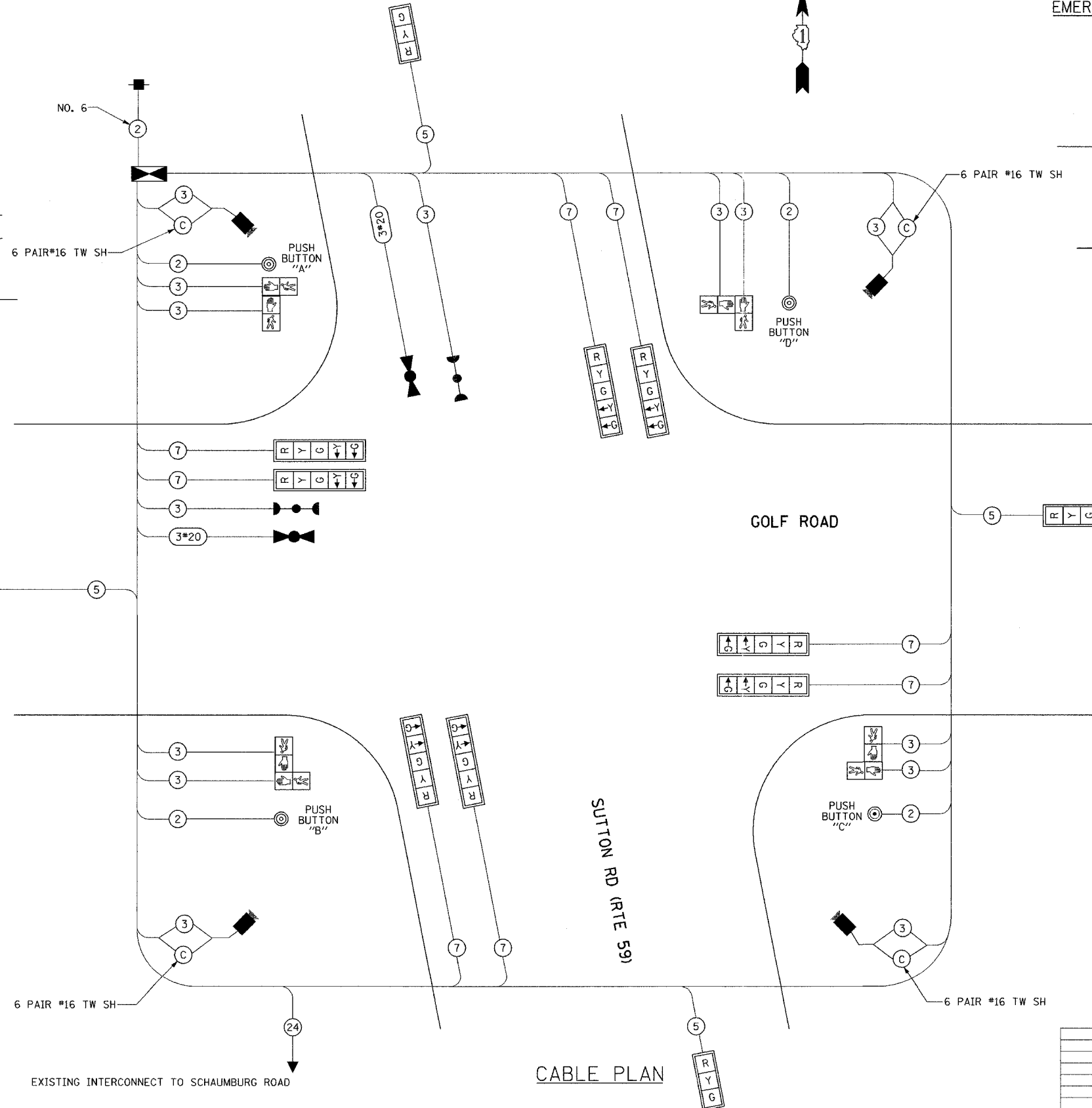


TEMPORARY PHASE DESIGNATION DIAGRAM

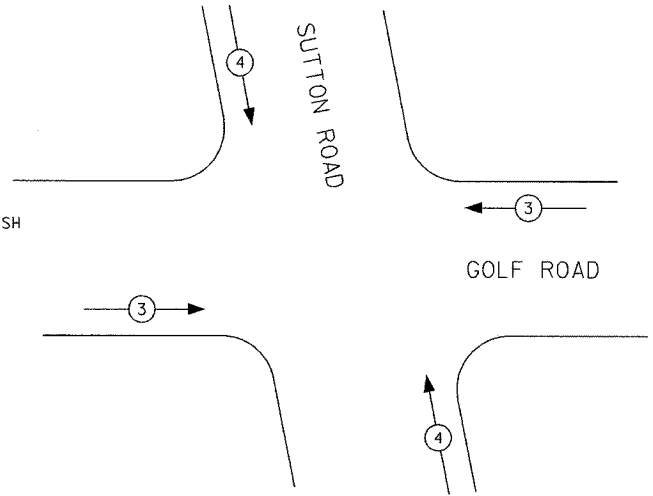
- LEGEND:**
- ← * → DUAL ENTRY PHASE
 - ← * → SINGLE ENTRY PHASE
 - ← * → PEDESTRIAN PHASE
 - * NUMBER REFERS TO ASSOCIATED PHASE

PUSH BUTTON "A" SHALL PLACE A CALL IN PHASES 4 AND 6
 PUSH BUTTON "B" SHALL PLACE A CALL IN PHASES 2 AND 4
 PUSH BUTTON "C" SHALL PLACE A CALL IN PHASES 2 AND 8
 PUSH BUTTON "D" SHALL PLACE A CALL IN PHASES 6 AND 8

ALL EXISTING SIGNAL HEADS WILL BE COVERED UNTIL PLACED BACK IN SERVICE



EMERGENCY VEHICLE PREEMPTION SEQUENCE



TEMPORARY EMERGENCY VEHICLE PREEMPTORS		
EMERGENCY VEHICLE PREEMPTOR	3	4
MOVEMENT	↓ ↑	← →

CABLE PLAN LEGEND:

- VIDEO DETECTION CAMERA
- 8" TRAFFIC SIGNAL SECTION
- 12" TRAFFIC SIGNAL SECTION
- 12" PEDESTRIAN SIGNAL SECTION
- 12" PEDESTRIAN SIGNAL SECTION
- CONTROLLER CABINET
- SERVICE INSTALLATION
- VEHICLE DETECTOR, INDUCTION LOOP
- MAGNETIC DETECTOR
- EMERGENCY VEHICLE LIGHT DETECTOR
- CONFIRMATION BEACON
- PUSHBUTTON DETECTOR
- 2 DENOTES NUMBER OF CONDUCTORS, ALL CABLE NO. 14 EXCEPT AS INDICATED. ALL LOOP DETECTOR CABLE TO BE SHIELDED.
- SIGNAL FACE WITH BACK PLATE "P" INDICATES PROGRAMMED HEAD
- "E" INDICATES EXISTING SIGNAL HEAD OR EXISTING PEDESTRIAN SIGNAL HEAD
- "P"

CABLE PLAN

REVISIONS	
NAME	DATE

ILLINOIS DEPARTMENT OF TRANSPORTATION
 FAU 1320 (IL 58 GOLF ROAD)
 OVER POPLAR CREEK
 TEMPORARY TRAFFIC SIGNAL
 CABLE PLAN AND SEQUENCE
 OF OPERATIONS
 SCALE: NOT TO SCALE
 DATE 7/20/07
 DRAWN BY: AJR
 CHECKED BY: RS