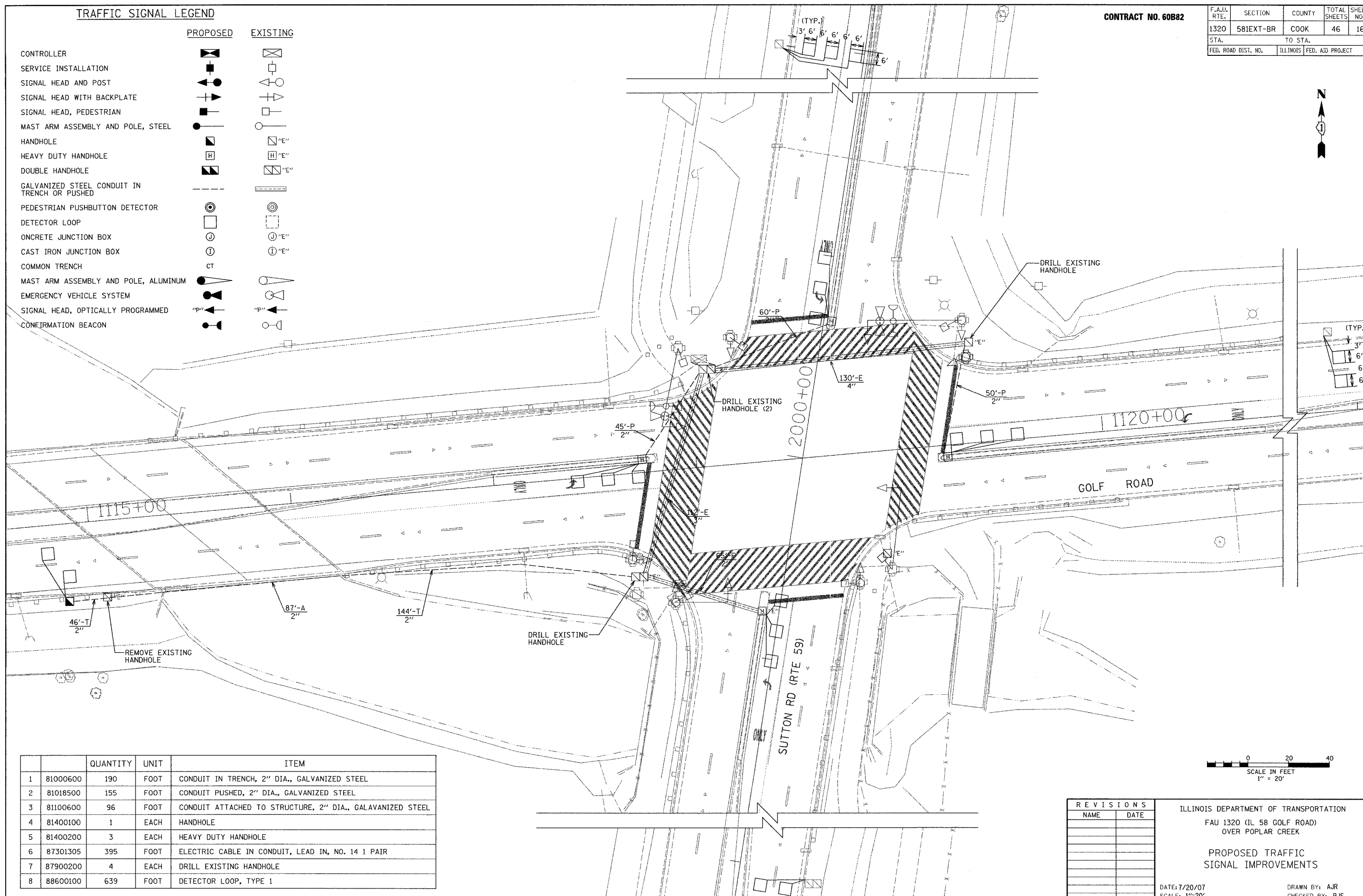


TRAFFIC SIGNAL LEGEND

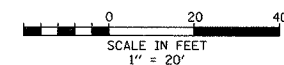
	PROPOSED	EXISTING
CONTROLLER		
SERVICE INSTALLATION		
SIGNAL HEAD AND POST		
SIGNAL HEAD WITH BACKPLATE		
SIGNAL HEAD, PEDESTRIAN		
MAST ARM ASSEMBLY AND POLE, STEEL		
HANDHOLE		
HEAVY DUTY HANDHOLE		
DOUBLE HANDHOLE		
GALVANIZED STEEL CONDUIT IN TRENCH OR PUSHED		
PEDESTRIAN PUSHBUTTON DETECTOR		
DETECTOR LOOP		
ONCRETE JUNCTION BOX		
CAST IRON JUNCTION BOX		
COMMON TRENCH	CT	
MAST ARM ASSEMBLY AND POLE, ALUMINUM		
EMERGENCY VEHICLE SYSTEM		
SIGNAL HEAD, OPTICALLY PROGRAMMED		
CONFIRMATION BEACON		

CONTRACT NO. 60882

F.A.I.L. RTE.	SECTION	COUNTY	TOTAL SHEETS	SHEET NO.
1320	581EXT-BR	COOK	46	16
STA.	TO STA.			
FED. ROAD DIST. NO.	ILLINOIS FED. AID PROJECT			



	QUANTITY	UNIT	ITEM
1	81000600	190	FOOT CONDUIT IN TRENCH, 2" DIA., GALVANIZED STEEL
2	81018500	155	FOOT CONDUIT PUSHED, 2" DIA., GALVANIZED STEEL
3	81100600	96	FOOT CONDUIT ATTACHED TO STRUCTURE, 2" DIA., GALVANIZED STEEL
4	81400100	1	EACH HANDHOLE
5	81400200	3	EACH HEAVY DUTY HANDHOLE
6	87301305	395	FOOT ELECTRIC CABLE IN CONDUIT, LEAD IN, NO. 14 1 PAIR
7	87900200	4	EACH DRILL EXISTING HANDHOLE
8	88600100	639	FOOT DETECTOR LOOP, TYPE 1



REVISIONS	
NAME	DATE

ILLINOIS DEPARTMENT OF TRANSPORTATION
 FAU 1320 (IL 58 GOLF ROAD)
 OVER POPLAR CREEK
 PROPOSED TRAFFIC
 SIGNAL IMPROVEMENTS

DATE: 7/20/07
 SCALE: 1"=20'
 DRAWN BY: AJR
 CHECKED BY: RJS