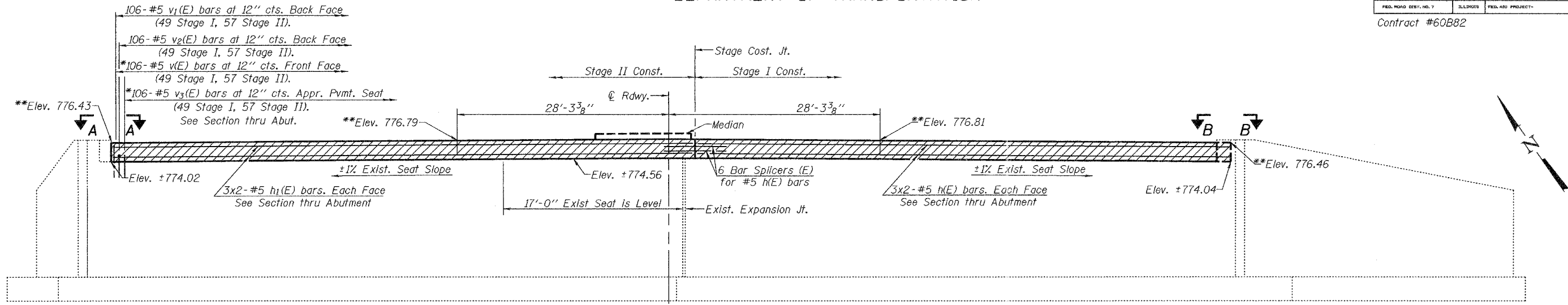


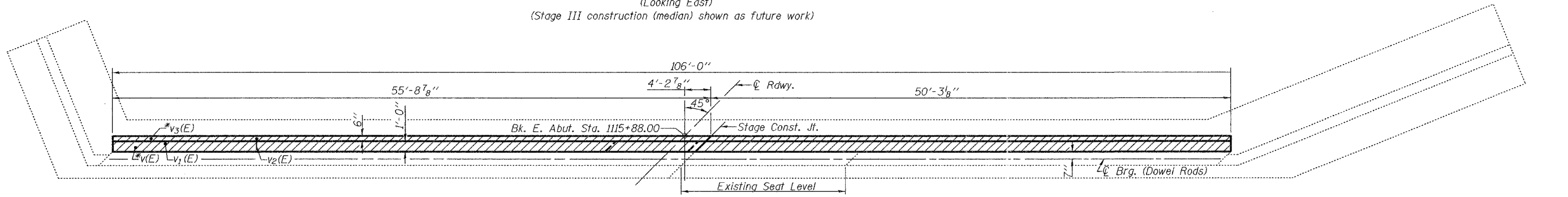
STATE OF ILLINOIS
DEPARTMENT OF TRANSPORTATION

ROUTE NO.	SECTION	COUNTY	SHEETS	SHEET NO.	SHEET NO. 10
F.A.U. 1320 (IL58)	581 EXT -BR	COOK	46	29	11 SHEETS
FED. ROAD DIST. NO. 7	ILLINOIS	FED. AID PROJECT-			

Contract #60B82



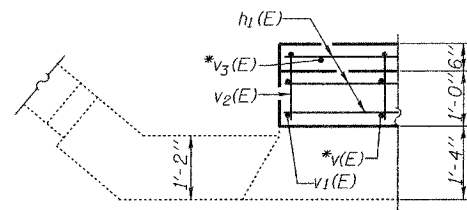
ELEVATION
(Looking East)
(Stage III construction (median) shown as future work)



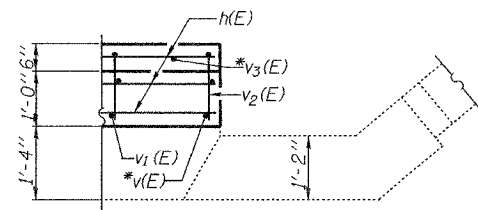
PLAN

*Drill and grout v(E) and v3(E) bars min. 9" according to Article 584 of the Standard Specifications.
**Elevations given at Front Face of Hatched Block.

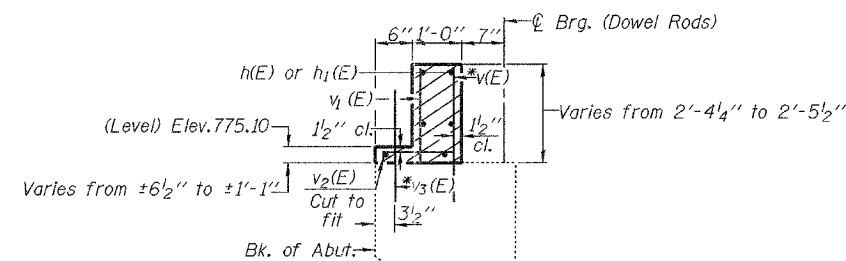
Notes: Hatched areas indicate proposed concrete construction. Hatched areas to be poured after Concrete Wearing Surface is in place and cured. Quantity of Concrete included with Concrete Superstructure on sheet 7 of 11. For Bar Splicer details see sheet 11 of 11.



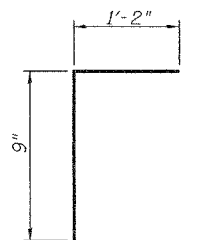
VIEW A-A



VIEW B-B



SECTION THRU ABUTMENT
(at fit. L's)



BAR v2(E)

DESIGNED	Dhruv P. Narielwala
CHECKED	Stephen M. Ryan
DRAWN	R. Sommer
CHECKED	DPN/SMR

2007	
EXAMINED	Thomas J. Domagalaki
PASSED	Ralph E. Anderson

EAST ABUTMENT
F.A.U. RT. 1320 SEC. 581 EXT-BR
COOK COUNTY
STATION 1115+40.00
STRUCTURE NO. 016-2087