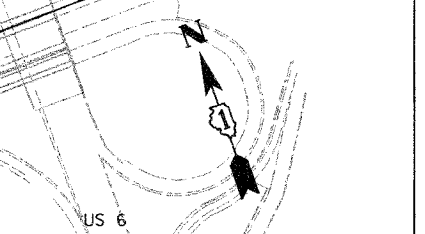
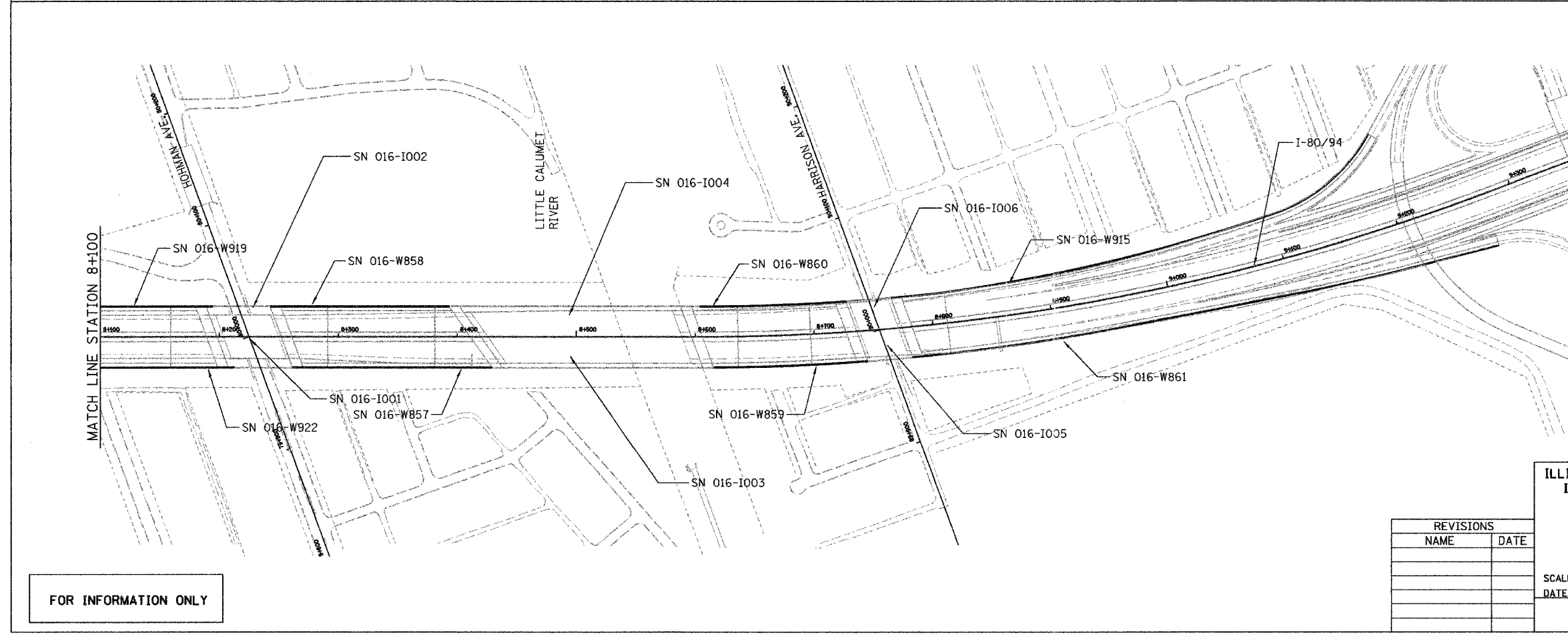
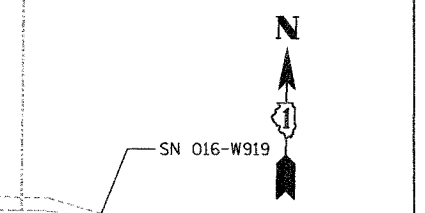
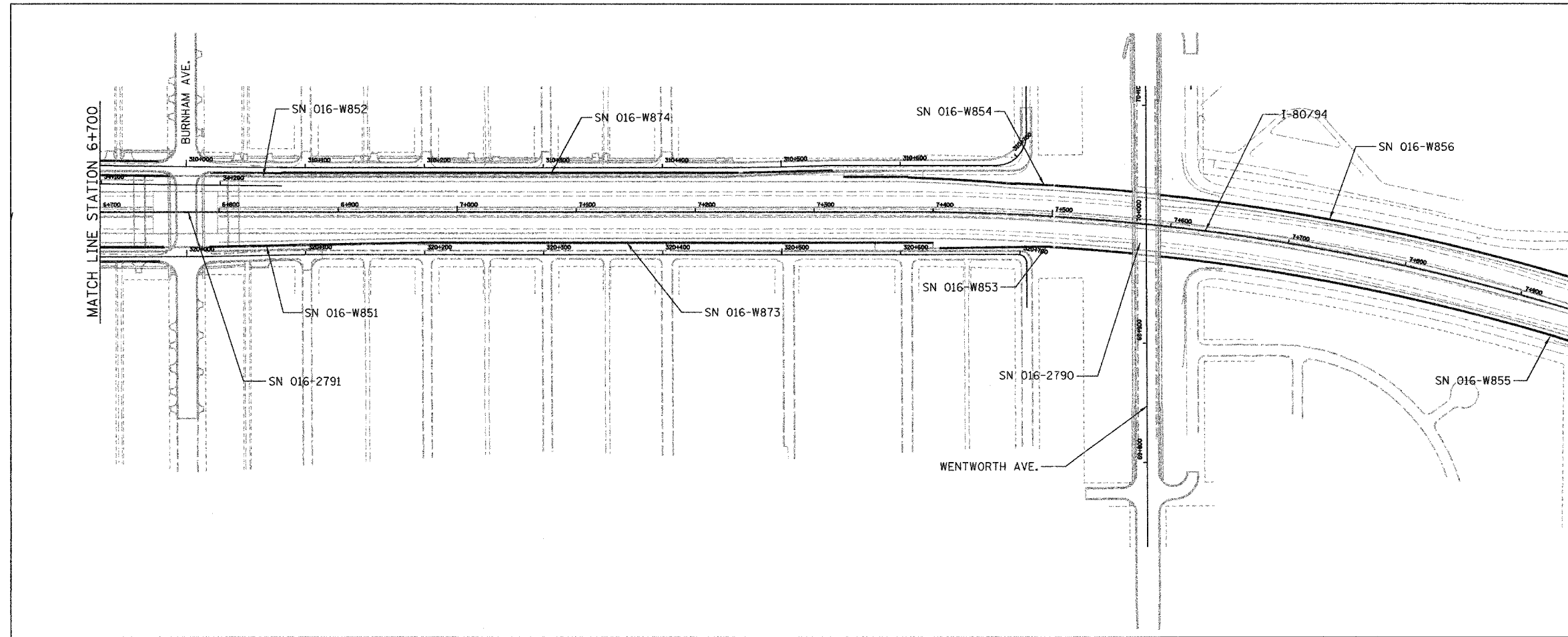


F.A.I. RTE. 80/94	SECTION 2007-031LS	COUNTY COOK	TOTAL SHEETS 51	SHEET NO. 49
STA. 6+700		TO STA. 8+100		
FED. ROAD DIST. NO.		ILLINOIS FED. AID PROJECT		
CONTRACT NO. 60D14				



FOR INFORMATION ONLY

REVISIONS	
NAME	DATE

ILLINOIS DEPARTMENT OF TRANSPORTATION
 I-80/94/US 6 (KINGERY EXPRESSWAY)
 ROADWAY LIGHTING
 AND TRAFFIC SURVEILLANCE

STRUCTURE LOCATION PLAN
 STA. 6+900 TO STA. 9+362.583

SCALE 1:2000 DRAWN BY ACE/CAD
 DATE 05/08/07 CHECKED BY TJW