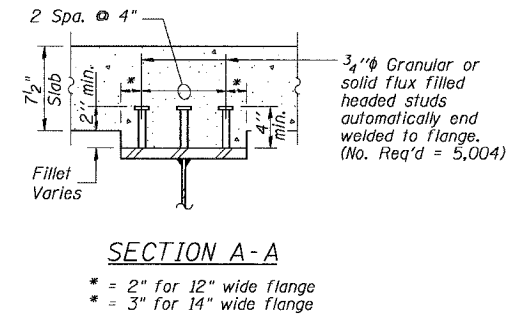
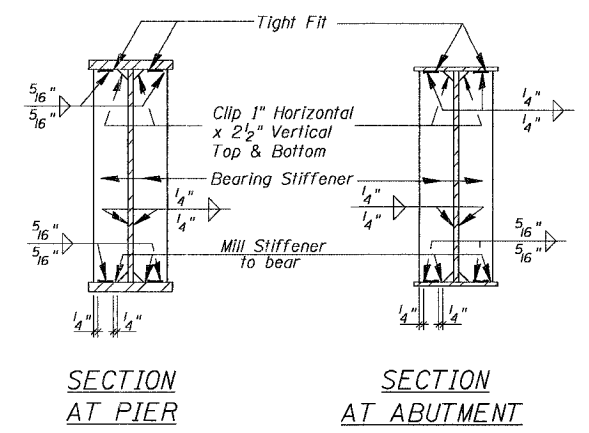
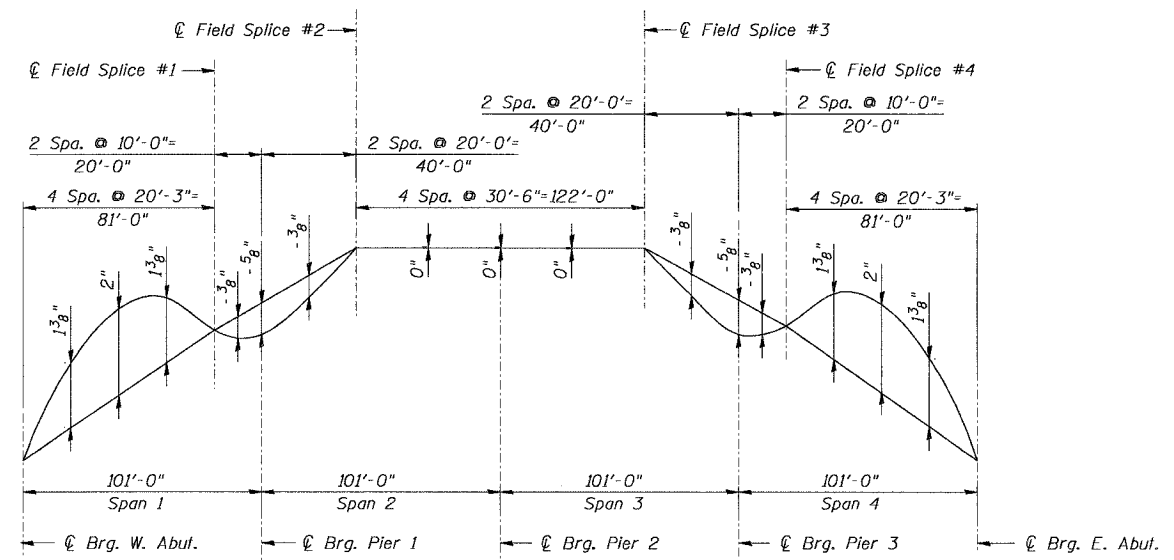


**TOP OF GIRDER WEB ELEVATIONS**  
(For Fabrication Use Only)

Girder No.	℄ Brg. W. Abut.	Splice #1	℄ Brg. Pier 1	Splice #2	℄ Brg. Pier 2	Splice #3	℄ Brg. Pier 3	Splice #4	℄ Brg. E. Abut.
1	822.971	823.225	823.216	823.342	823.355	823.361	823.247	823.262	823.026
2	823.126	823.376	823.366	823.490	823.499	823.501	823.385	823.399	823.159
3	823.248	823.495	823.484	823.605	823.610	823.609	823.490	823.503	823.260
4	823.260	823.503	823.490	823.609	823.610	823.605	823.484	823.495	823.248
5	823.159	823.399	823.385	823.501	823.499	823.490	823.366	823.376	823.126
6	823.026	823.262	823.247	823.361	823.355	823.342	823.216	823.225	822.971



- Notes:
- Work this Sheet with Sheets 8 and 10 of 17.
  - NTR denotes steel subject to supplemental Requirements for Notch Toughness (Zone 2).
  - All Structural Steel on this Sheet shall be AASHTO M270 Grade 50 Steel.
  - Longitudinal dimensions for Girder are shown horizontal, exclusive of rise.
  - Stud Shear Connectors not included in this Contract.



DESIGNED	S.S.T.
CHECKED	S.D.H.
DRAWN	E.B.
CHECKED	S.S.T.

**BILL OF MATERIAL**

Item	Unit	Quantity
Furnishing Structural Steel	L. Sum	1

**GIRDER ELEVATION**  
 IL Route 176 over  
 South Branch of the Kishwaukee River  
 F.A.P. RTE 533, SECTION 11 R-1-1-1  
 McHENRY COUNTY  
 STATION 51+50.00  
 DATE: 06-29-07 S.N. 056-0071  
 GRAEF, ANHALT, SCHLOEMER & ASSOCIATES INC  
 CHICAGO ILLINOIS

N:\Jobs\2006\101\South Branch Steel\176-Steel2.dgn  
 6/29/2007 3:08:42 PM