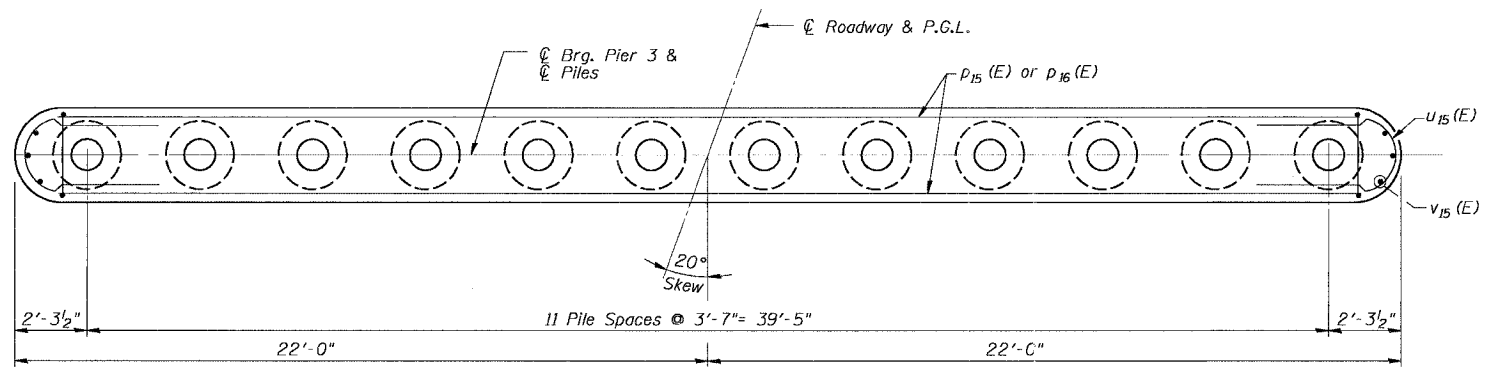
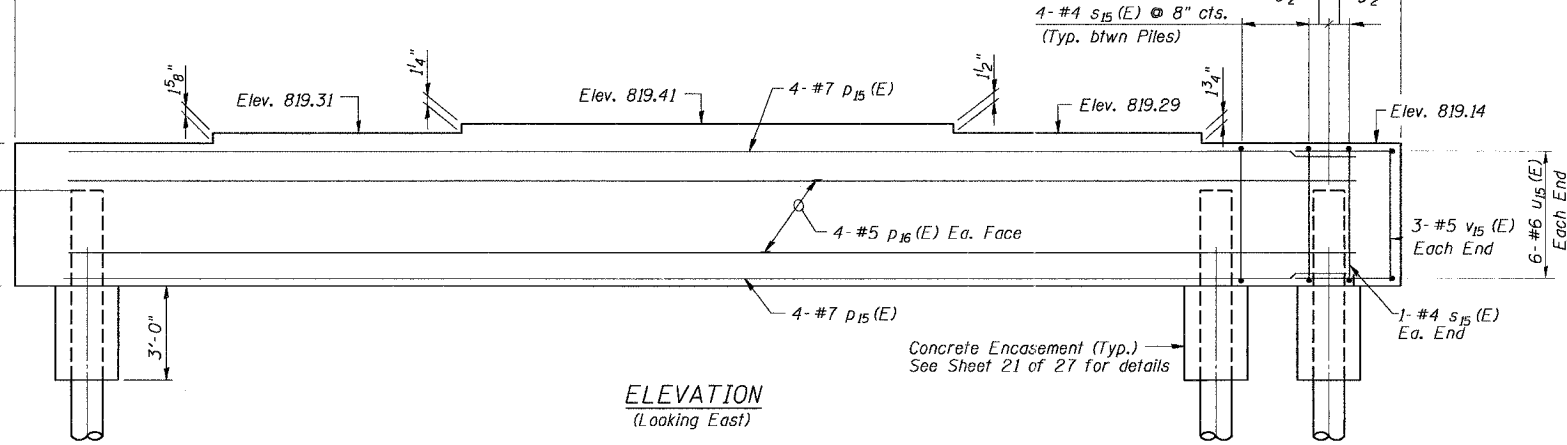
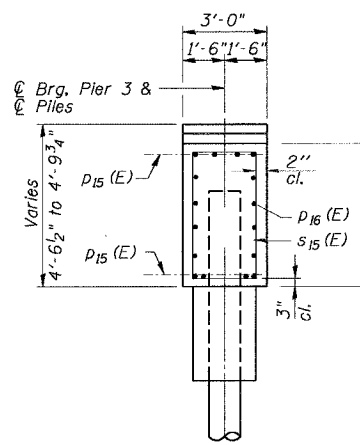
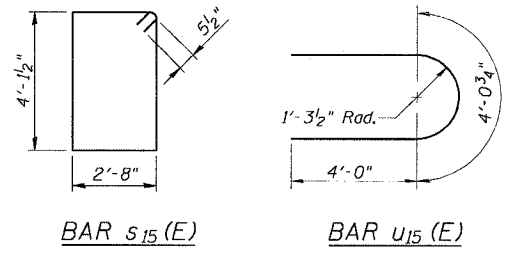
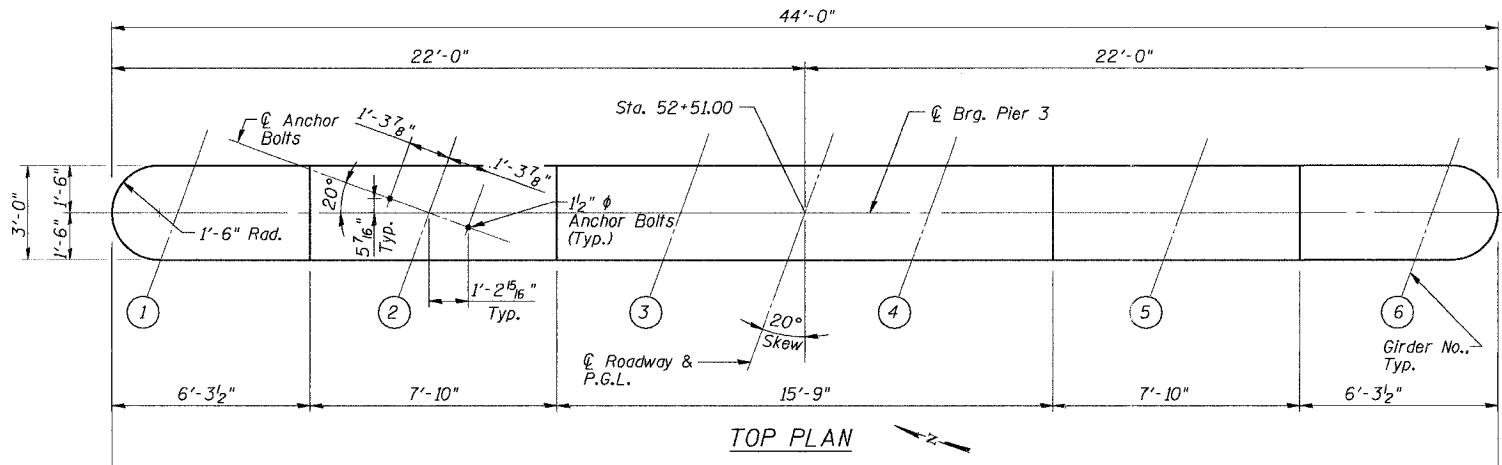


ROUTE NO.	SECTION	COUNTY	TOTAL SHEETS	SHEET NO.
533	II R-1-1-1	McHenry	19	19
FED. ROAD EST. NO.		ILLINOIS	FED. AID PROJECT	
Contract #60D29				

SHEET NO. 17 OF 17 SHEETS



END VIEW

ELEVATION (Looking East)

SECTION A-A

PIER 3

**PILE DATA**

Type: 14" Metal Shell Pile  
 Capacity: 65 Tons/Pile  
 Est. Length: 41 Ft.  
 No. Req'd: 11 + 1 Test Pile

DESIGNED	S.S.T.
CHECKED	S.D.H.
DRAWN	E.B.
CHECKED	S.S.T.

- Notes:
1. Space reinforcement in cap to miss anchor bolts.
  2. Pour steps monolithically with cap.

**BILL OF MATERIAL**

Bar	No.	Size	Length	Shape
p15 (E)	8	#7	41'-0"	—
p16 (E)	8	#5	41'-0"	—
s15 (E)	46	#4	14'-6"	□
u15 (E)	12	#6	12'-1"	—
v15 (E)	6	#5	4'-1"	—
Structure Excavation			Cu. Yd.	52
Concrete Structures			Cu. Yd.	22.4
Concrete Encasement			Cu. Yd.	3.9
Reinforcement Bars, Epoxy Coated			Pound	1,700
Furnishing Metal Shell Piles 14"			Foot	451
Driving Piles			Foot	451
Test Pile Metal Shells			Each	1

Reinforcement Bars designated (E) shall be epoxy coated.

**FOR INFORMATION ONLY**

**PIER 3**  
 IL Route 176 over  
 South Branch of the Kishwaukee River  
 F.A.P. RTE 533, SECTION II R-1-1-1  
 McHENRY COUNTY  
 STATION 51+50.00  
 DATE: 06-29-07 S.N. 056-0071  
 GRAEF, ANHALT, SCHLOEMER & ASSOCIATES INC  
 CHICAGO ILLINOIS

NA:\jobs\2006\pilot\South Branch Steel\176-Pier-3.dgn  
 6/29/2007 3:03:42 PM