

F.A.U. RTE.	SECTION	COUNTY	TOTAL SHEETS	SHEET NO.
3528	2001-143RS	COOK	19	1

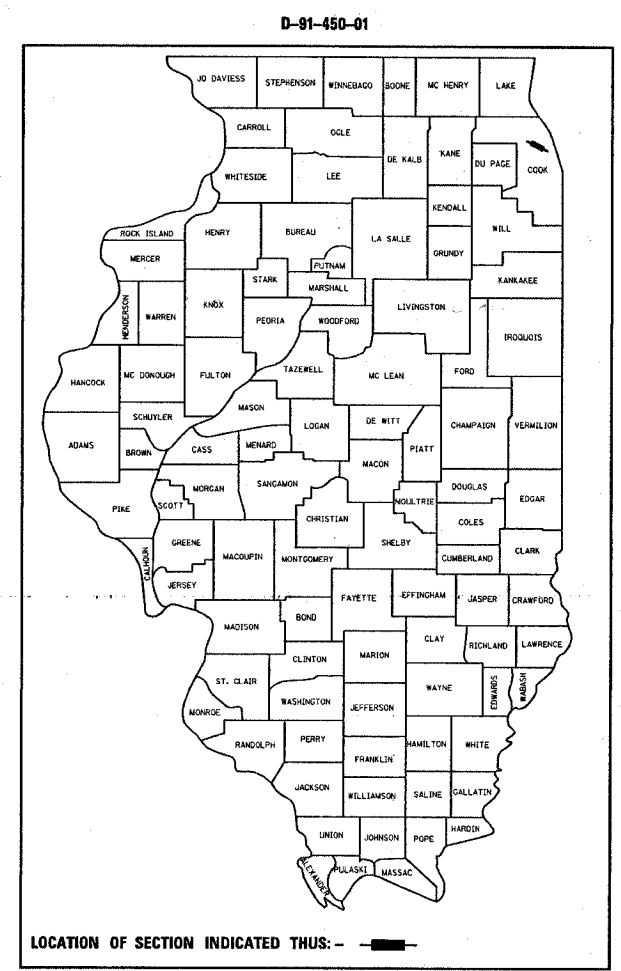
**STATE OF ILLINOIS
DEPARTMENT OF TRANSPORTATION
DIVISION OF HIGHWAYS**

PROPOSED HIGHWAY PLANS

**F.A.U. ROUTE 3528: ELSTON AVE.
ILL 50 (CICERO AVE.) TO LOWELL AVE.
SECTION: 2001-143RS
RESURFACING (MAINTENANCE)
SN: 016-0610
PROJECT: M-HPP-ACHPP-3528(001)
COOK COUNTY
C-91-450-01**

FOR INDEX OF SHEETS, SEE SHEET NO. 2

PROJECT LOCATED IN THE CITY OF CHICAGO



LOCATION OF SECTION INDICATED THUS: —

PROJECT BEGINS:
STATION 122+57

OMISSION:
STA. 148+45 TO STA. 149+56

PROJECT ENDS:
STATION 161+39

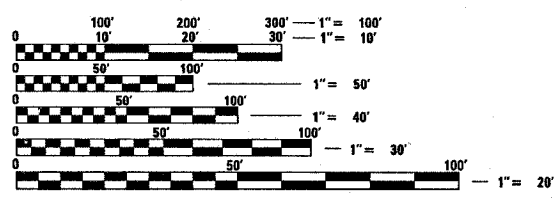


GROSS LENGTH OF PROJECT = 3,882 FT. (0.75 MI.)
NET LENGTH OF PROJECT = 3,771 FT. (0.71 MI.)



BRIDGE ID# 016-0610 OVER EDENS EXPRESSWAY 122+98 STATION
BRIDGE WORK WILL CONSIST OF RESURFACING.

TRAFFIC DATA
2006 ADT = 15,900
SPEED LIMIT = 30 MPH



FULL SIZE PLANS HAVE BEEN PREPARED USING STANDARD ENGINEERING SCALES. REDUCED SIZED PLANS WILL NOT CONFORM TO STANDARD SCALES. IN MAKING MEASUREMENTS ON REDUCED PLANS, THE ABOVE SCALES MAY BE USED.

J.U.I.E.
JOINT UTILITY LOCATION INFORMATION FOR EXCAVATION
1-800-892-0123

C.U.A.N.
CHICAGO UTILITY ALERT NETWORK
1-312-744-7000

CONTRACT NO. 62322

**STATE OF ILLINOIS
DEPARTMENT OF TRANSPORTATION
DIVISION OF HIGHWAYS**

SUBMITTED July 23, 2007
Diane O'Keefe
DEPUTY DIRECTOR OF HIGHWAYS, REGION ENGINEER

August 17, 2007
Eric E. Harrell
ENGINEER OF DESIGN AND ENVIRONMENT

August 17, 2007
Milton R. Sewell
DIRECTOR OF HIGHWAYS, CHIEF ENGINEER

**PRINTED BY THE AUTHORITY
OF THE STATE OF ILLINOIS**

DISTRICT ONE - PLAN PREPARATION ENGINEER: KEN ENG/JENPAI CHANG (847) 705-4432