

F.A.U. RTE.	SECTION	COUNTY	TOTAL SHEETS	SHEET NO.
3528	2001-143RS	COOK	19	1

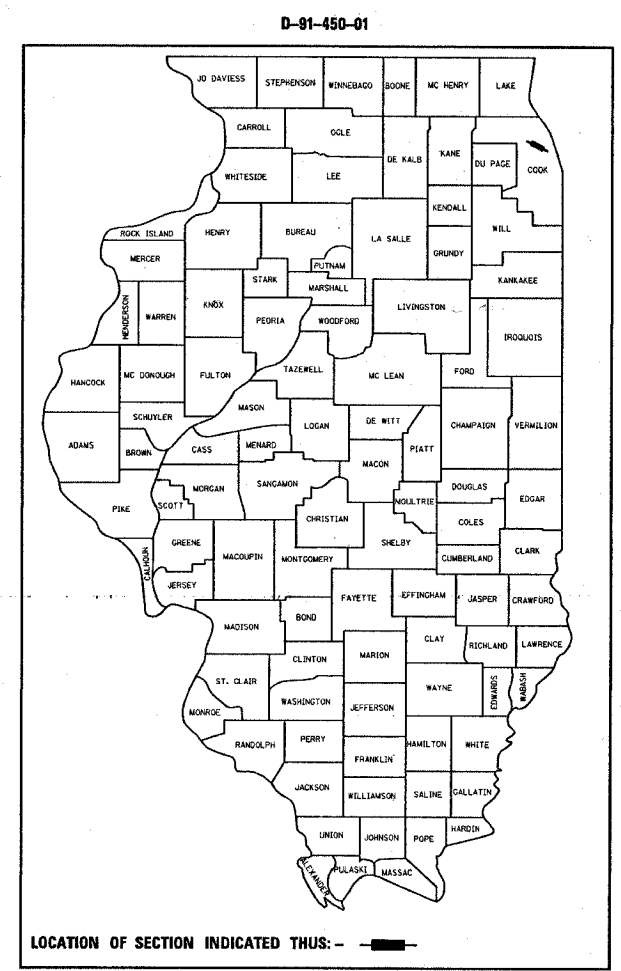
**STATE OF ILLINOIS
DEPARTMENT OF TRANSPORTATION
DIVISION OF HIGHWAYS**

PROPOSED HIGHWAY PLANS

**F.A.U. ROUTE 3528: ELSTON AVE.
ILL 50 (CICERO AVE.) TO LOWELL AVE.
SECTION: 2001-143RS
RESURFACING (MAINTENANCE)
SN: 016-0610
PROJECT: M-HPP-ACHPP-3528(001)
COOK COUNTY
C-91-450-01**

FOR INDEX OF SHEETS, SEE SHEET NO. 2

PROJECT LOCATED IN THE CITY OF CHICAGO



LOCATION OF SECTION INDICATED THUS: —

PROJECT BEGINS:
STATION 122+57

OMISSION:
STA. 148+45 TO STA. 149+56

PROJECT ENDS:
STATION 161+39

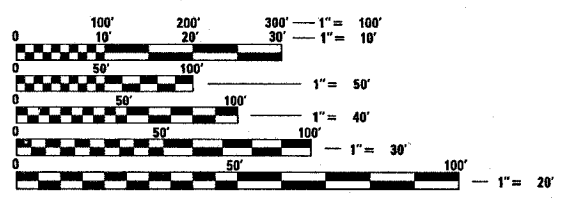


GROSS LENGTH OF PROJECT = 3,882 FT. (0.75 MI.)
NET LENGTH OF PROJECT = 3,771 FT. (0.71 MI.)



BRIDGE ID# 016-0610 OVER EDENS EXPRESSWAY 122+98 STATION
BRIDGE WORK WILL CONSIST OF RESURFACING.

TRAFFIC DATA
2006 ADT = 15,900
SPEED LIMIT = 30 MPH



FULL SIZE PLANS HAVE BEEN PREPARED USING STANDARD ENGINEERING SCALES. REDUCED SIZED PLANS WILL NOT CONFORM TO STANDARD SCALES. IN MAKING MEASUREMENTS ON REDUCED PLANS, THE ABOVE SCALES MAY BE USED.

J.U.I.E.
JOINT UTILITY LOCATION INFORMATION FOR EXCAVATION
1-800-892-0123

C.U.A.N.
CHICAGO UTILITY ALERT NETWORK
1-312-744-7000

CONTRACT NO. 62322

**STATE OF ILLINOIS
DEPARTMENT OF TRANSPORTATION
DIVISION OF HIGHWAYS**

SUBMITTED July 23, 2007
Diane O'Keefe
DEPUTY DIRECTOR OF HIGHWAYS, REGION ENGINEER

August 17, 2007
Eric E. Harrell
ENGINEER OF DESIGN AND ENVIRONMENT

August 17, 2007
Milton R. Sewell
DIRECTOR OF HIGHWAYS, CHIEF ENGINEER

**PRINTED BY THE AUTHORITY
OF THE STATE OF ILLINOIS**

DISTRICT ONE - PLAN PREPARATION ENGINEER: KEN ENG/JENPAI CHANG (847) 705-4432

F.A.U. RATE:	SECTION	COUNTY	TOTAL SHEETS	SHEET NO.
3528	2001-143RS	COOK	19	2
FED. ROAD DIST. NO. 1	ILLINOIS	HIGHWAY PROJECT		

CONTRACT # 62322

INDEX OF SHEETS

SHEET NO.	DESCRIPTION
1	TITLE SHEET
2	INDEX OF SHEETS, STATE STANDARDS AND GENERAL NOTES
3	SUMMARY OF QUANTITIES
4-5	TYPICAL SECTIONS
6-7	ROADWAY AND PAVEMENT MARKING PLANS
8	ELSTON AVE. BRIDGE OVER I-94 (EDENS EXPRESSWAY)
9	DETAILS FOR FRAME AND LIDS ADJUSTMENT WITH MILLING
10	PAVEMENT PATCHING FOR HMA SURFACED PAVEMENT
11	CURB OR CURB AND GUTTER REMOVAL AND REPLACEMENT
12	BUTT JOINT AND HMA TAPER
13	TRAFFIC CONTROL AND PROTECTION FOR SIDEROADS, INTERSECTIONS AND DRIVEWAYS
14	TYPICAL APPLICATIONS RAISED REFLECTIVE PAVEMENT MARKERS (SNOW-PLOW RESISTANT)
15	TRAFFIC CONTROL AND PROTECTIONS AT TURN BAYS
16	PAVEMENT MARKING LETTERS AND SYMBOLS FOR TRAFFIC STAGING
17	ARTERIAL ROAD INFORMATION SIGN
18-19	CITY OF CHICAGO TYPICAL PAVEMENT MARKINGS

LIST OF STATE STANDARDS

STANDARD NO.	DESCRIPTION
000001-04	STANDARD SYMBOLS, ABBREVIATIONS AND PATTERNS
442201-02	CLASS C AND D PATCHES
604001-02	FRAMES AND LIDS, TYPE I
606001-03	CONCRETE CURB AND COMBINATION CURB AND GUTTER
701301-02	LANE CLOSURE, 2L, 2W, SHORT TIME OPERATIONS
701311-02	LANE CLOSURE, 2L, 2W, MOVING OPERATIONS - DAY ONLY
701501-03	URBAN LANE CLOSURE, 2L, 2W, UNDIVIDED
701606-04	URBAN LANE CLOSURE, MULTILANE 2W WITH MOUNTABLE MEDIAN
701701-04	URBAN LANE CLOSURE, MULTILANE INTERSECTION
702001-06	TRAFFIC CONTROL DEVICES

GENERAL NOTES

BEFORE STARTING ANY EXCAVATION, THE CONTRACTOR SHALL CALL "CUAN" (CHICAGO UTILITY ALERT NETWORK) AT 312-744-7000 AND "JULIE" (JOINT UTILITY LOCATION INFORMATION FOR EXCAVATION) AT 800-892-0123 FOR FIELD LOCATIONS OF BURIED ELECTRIC, TELEPHONE AND GAS FACILITIES. (48 HOURS NOTIFICATION IS REQUIRED.)

THE CONTRACTOR SHALL COORDINATE CONSTRUCTION ACTIVITIES WITH UTILITY COMPANIES AND CITY OF CHICAGO

THE CONTRACTOR WILL NOT BE ALLOWED TO SET UP A YARD OR FIELD OFFICE ON STATE PROPERTY WITHOUT WRITTEN PERMISSION FROM THE DEPARTMENT.

THE RESIDENT ENGINEER SHALL CONTACT WALTER CZARNY, AREA TRAFFIC FIELD ENGINEER AT 773-685-4342 OR 847-715-8419. A MINIMUM OF 72 HOURS PRIOR TO PLACEMENT OF PERMANENT PAVEMENT MARKINGS.

ALL PAVEMENT PATCHING SHALL BE CLASS C.

WHEN MILLED PAVEMENT IS OPEN TO TRAFFIC THE MAXIMUM GRADE DIFFERENTIAL BETWEEN PASSES IF THE MILLING MACHINE SHALL NOT EXCEED 1/2 INCHES (40 MM) WHERE THE SPEED LIMIT IS 45 MPH (80 KM/H) OR LESS AND 1 INCH (25 MM) WHERE THE SPEED LIMIT IS GREATER THAN 45 MPH (80 KM/H). WITH WRITTEN APPROVAL FROM THE ENGINEER, A MAXIMUM GRADE DIFFERENTIAL OF 3 INCHES (75 MM) MAY BE ALLOWED IF THE EDGE OF THE MILLING IS SLOPED A MINIMUM 1:3 (V:H).

DRAINAGE STRUCTURES IN THE PAVEMENT SHALL BE MILLED AROUND AND NOT ADJUSTED

BUTT JOINTS WILL BE INSTALLED AT THE ENDS OF ALL RESURFACING (WHERE RESURFACING MEETS EXISTING PAVEMENT), IN ACCORDANCE WITH THE "BUTT JOINT AND HMA TAPER DETAILS" SHEET INCLUDED IN THE PLANS, UNLESS OTHERWISE SPECIFIED.

TRAFFIC CONDITIONS, ACCIDENTS AND OTHER UNFORESEEN EMERGENCY CONDITIONS MAY REQUIRE THE ENGINEER TO RESTRICT, MODIFY OR REMOVE LANE CLOSURES OF CHANNELIZATIONS SHOWN IN THE PLANS. THE CONTRACTOR SHALL MAKE NECESSARY ADJUSTMENTS AS DIRECTED BY THE ENGINEER WITHOUT DELAY. THE CONTRACTOR SHALL RESPOND WITHIN 30 MINUTES FROM THE TIME OF NOTIFICATION BY THE ENGINEER TO ANY REQUEST MADE BY THE ENGINEER FOR CORRECTION.

THE PAVEMENT PATCHING SHALL BE COMPLETED PRIOR TO HMA SURFACE REMOVAL.

THE CONTRACTOR SHALL CONTACT THE DISTRICT ONE ARTERIAL TRAFFIC CONTROL SUPERVISOR AT (847) 705-4470 A MINIMUM OF 72 HOURS IN ADVANCE PRIOR TO BEGINNING WORK.

ALL WORK ON THIS CONTRACT SHALL BE PERFORMED UTILIZING DAYTIME LANE CLOSURES EXCEPT FOR CURING CLASS B OR C PATCHES. OVERNIGHT LANE CLOSURES WILL BE PERMITTED FOR THE CURING OF CLASS B OR C PATCHES; HOWEVER, THE CLOSURES FOR A GIVEN AREA WILL BE LIMITED IN DURATION TO THE REQUIRED CURING TIME FOR THE MIX SPECIFIED.

CHICAGO NOTES

IN CASE OF DAMAGE TO CITY OF CHICAGO SEWERS, PRIVATE AND PUBLIC DRAINS, SEWER STRUCTURES AND/OR BENCH MONUMENTS, THE CONTRACTOR SHALL IMMEDIATELY CONTACT THE DEPARTMENT OF SEWERS AT (312) 747-7892 OR (312) 747-7893

ALL BROKEN, CRACKED, WORN OR OTHERWISE DAMAGED OR BICYCLE UNSAFE FRAMES AND GRATES OR LIDS ON SEWER STRUCTURES SHALL BE REPLACED WITH NEW DEPARTMENT OF SEWERS' STANDARD FRAMES AND GRATES OR LIDS. OLD FRAMES AND GRATES OR LIDS SHALL BE DELIVERED TO THE DEPARTMENT OF SEWERS AT 39TH STREET AND ASHLAND AVENUE.

PERMITS WITH THE DEPARTMENT OF SEWERS ARE REQUIRED FOR ALL UNDERGROUND STORM, SANITARY OR COMBINED SEWER SYSTEM CONSTRUCTION, AND FOR RESURFACING WORK INVOLVING ADJUSTMENT OF SEWER STRUCTURES. THE DEPARTMENT OF SEWERS' PERMIT MUST BE OBTAINED BY A LICENSED SEWER DRAIN LAYER PRIOR TO THE START OF CONSTRUCTION. THE LICENSED SEWER CONTRACTOR / SUBCONTRACTOR MUST SUBMIT TWO SETS OF THE SEWER PERMIT TO SUITE 410, 333 SOUTH STATE STREET, CHICAGO IL 60604-3971. INSPECTION WILL BE PROVIDED BY THE DEPARTMENT OF SEWERS.

PAVEMENT REPLACEMENT AROUND FRAMES AND GRATES OR LIDS WHERE DRAINAGE, WATER MAIN OR ELECTRICAL STRUCTURES ARE ADJUSTED OR RECONSTRUCTED, SHALL BE CLASS SI CONCRETE.

REVISIONS	
NAME	DATE

ILLINOIS DEPARTMENT OF TRANSPORTATION

**INDEX OF SHEETS,
LIST OF STATE STANDARDS
AND GENERAL NOTES**

SCALE: VERT. NONE
HORIZ. DATE

DRAWN BY
CHECKED BY

7/23/2007
c:\p\olectra\at\45001\design\ccu.dgn

F.A.U. RTE.	SECTION	COUNTY	TOTAL SHEETS	SHEET NO.
3528	2001-143RS	COOK	20	3
FED. ROAD DIST. NO. 1		ILLINOIS	HIGHWAY PROJECT	

CONTRACT # 62322

SUMMARY OF QUANTITIES			URBAN TOTAL QUANTITIES	CONSTRUCTION TYPE CODE			
CODE NO	ITEM	UNIT		80% FED. 20% STATE 1000	80% FED. 10% STATE 10% CHICAGO Y025 (PARKING)	80% FED. 20% STATE SFTY-2A SN 016-0610	
40600200	BITUMINOUS MATERIALS (PRIME COAT)	TON	10	8	2		
40600300	AGGREGATE (PRIME COAT)	TON	45	39	6		
40600400	MIXTURE FOR CRACKS, JOINTS, AND FLANGEWAYS	TON	7	6	1		
40600895	CONSTRUCTING TEST STRIP	EACH	1	1			
40600982	HOT-MIX ASPHALT SURFACE REMOVAL - BUTT JOINT	SQ YD	331	331			
40601005	HOT-MIX ASPHALT REPLACEMENT OVER PATCHES	TON	83	83			
40603340	HOT-MIX ASPHALT SURFACE COURSE, MIX "D", N70	TON	1928	1610	246	72	
42001300	PROTECTIVE COAT	SQ YD	450	450			
44000155	HOT-MIX ASPHALT SURFACE REMOVAL, 1 1/2"	SQ YD	852			852	
44000158	HOT-MIX ASPHALT SURFACE REMOVAL, 2 1/4"	SQ YD	21895	19028	2867		
44000915	HOT-MIX ASPHALT SURFACE REMOVAL (DECK)	SQ YD	852			852	
44001700	COMBINATION CONCRETE CURB AND GUTTER REMOVAL AND REPLACEMENT	FOOT	1000	1000			
44002212	HOT-MIX ASPHALT REMOVAL OVER PATCHES, 3"	SQ YD	657	657			
44201337	CLASS C PATCHES, TYPE I, 9 INCH	SQ YD	6	6			
44201341	CLASS C PATCHES, TYPE II, 9 INCH	SQ YD	510	510			
44201345	CLASS C PATCHES, TYPE III, 9 INCH	SQ YD	10	10			
44201347	CLASS C PATCHES, TYPE IV, 9 INCH	SQ YD	21	21			
55039700	STORM SEWERS TO BE CLEANED	FOOT	100	100			
60250200	CATCH BASINS TO BE ADJUSTED	EACH	4	4			
60262900	INLETS TO BE RECONSTRUCTED WITH NEW TYPE 1 FRAME, OPEN LID	EACH	1	1			
60300105	FRAMES AND GRATES TO BE ADJUSTED	EACH	3	3			
60300310	FRAMES AND LIDS TO BE ADJUSTED (SPECIAL)	EACH	3	3			
67000400	ENGINEER'S FIELD OFFICE, TYPE A	CAL MO	6	6			
67100100	MOBILIZATION	L SUM	1	1			
70102620	TRAFFIC CONTROL AND PROTECTION, STANDARD 701501	L SUM	1	1			

SUMMARY OF QUANTITIES			URBAN TOTAL QUANTITIES	CONSTRUCTION TYPE CODE			
CODE NO	ITEM	UNIT		80% FED. 20% STATE 1000	80% FED. 10% STATE 10% CHICAGO Y025 (PARKING)	80% FED. 20% STATE SFTY-2A SN 016-0610	
70102625	TRAFFIC CONTROL AND PROTECTION, STANDARD 701606	L SUM	1	1			
70102635	TRAFFIC CONTROL AND PROTECTION, STANDARD 701701	L SUM	1	1			
70103815	TRAFFIC CONTROL SURVEILLANCE	CAL DA	30	30			
70300100	SHORT-TERM PAVEMENT MARKING	FOOT	2705	2705			
70300210	TEMPORARY PAVEMENT MARKING - LETTERS AND SYMBOLS	SQ FT	110	110			
70300220	TEMPORARY PAVEMENT MARKING - LINE 4"	FOOT	6919	6919			
70300240	TEMPORARY PAVEMENT MARKING - LINE 6"	FOOT	1977	1977			
70300250	TEMPORARY PAVEMENT MARKING - LINE 8"	FOOT	4801	4801			
70300280	TEMPORARY PAVEMENT MARKING - LINE 24"	FOOT	254	254			
70301000	WORK ZONE PAVEMENT MARKING REMOVAL	SQ FT	915	915			
* 78000100	THERMOPLASTIC PAVEMENT MARKING - LETTERS AND SYMBOLS	SQ FT	110	110			
* 78000200	THERMOPLASTIC PAVEMENT MARKING - LINE 4"	FOOT	6919	6919			
* 78000400	THERMOPLASTIC PAVEMENT MARKING - LINE 6"	FOOT	1977	1977			
* 78000500	THERMOPLASTIC PAVEMENT MARKING - LINE 8"	FOOT	4801	4801			
* 78000650	THERMOPLASTIC PAVEMENT MARKING - LINE 24"	FOOT	254	254			
X0322256	TEMPORARY INFORMATION SIGNING	SQ FT	51.4	51.4			
X0322748	BICYCLE LANE MARKING	EACH	20	20			
X4067107	POLYMERIZED LEVELING BINDER (MACHINE METHOD), IL-4.75, N50	TON	945	824	121		
XX001306	SIDEWALK REMOVAL AND REPLACEMENT	SQ FT	1000	1000			
NP Z0018500	DRAINAGE STRUCTURES TO BE CLEANED	EACH	74	58	16		
Z0048665	RAILROAD PROTECTIVE LIABILITY INSURANCE	L SUM	1	1			
© 20076600	TRAINEES	HOUR	1000	1000			

7/23/2007 10:00:00 AM

REVISIONS	
NAME	DATE

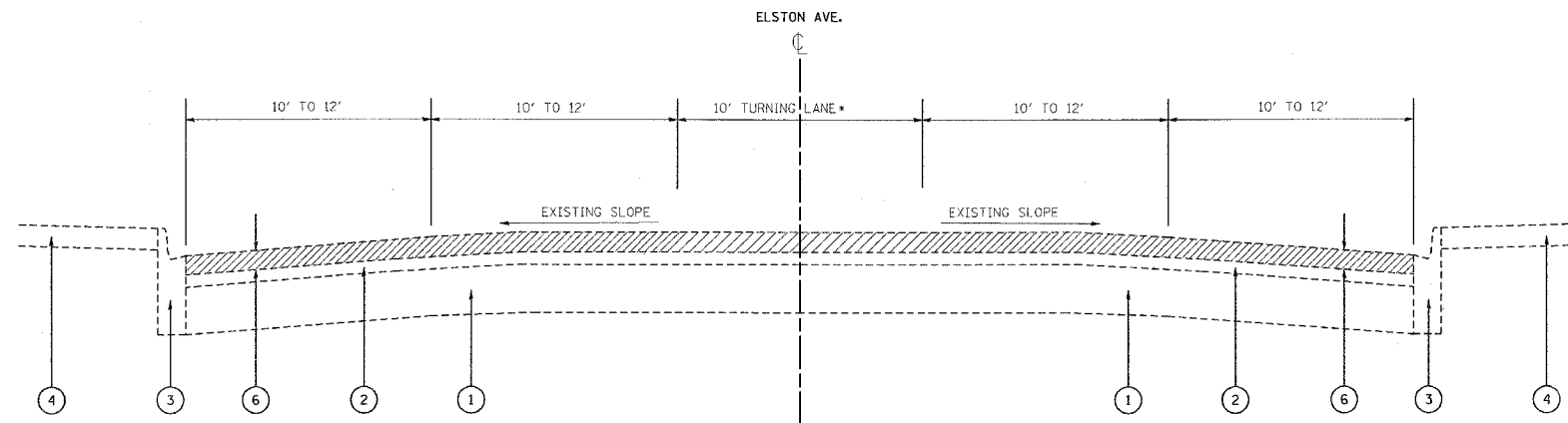
ILLINOIS DEPARTMENT OF TRANSPORTATION
SUMMARY OF QUANTITIES
ELSTON AVENUE

© Y880
NP = NON-PARTICIPATING
REV.

PLOT DATE: 7/23/2007

F.A.U. RTE.	SECTION	COUNTY	TOTAL SHEETS	SHEET NO.
3528	2001-143RS	COOK	19	4
STA.		TO STA.		
FED. ROAD DIST. NO.	ILLINOIS	FED. AID PROJECT		

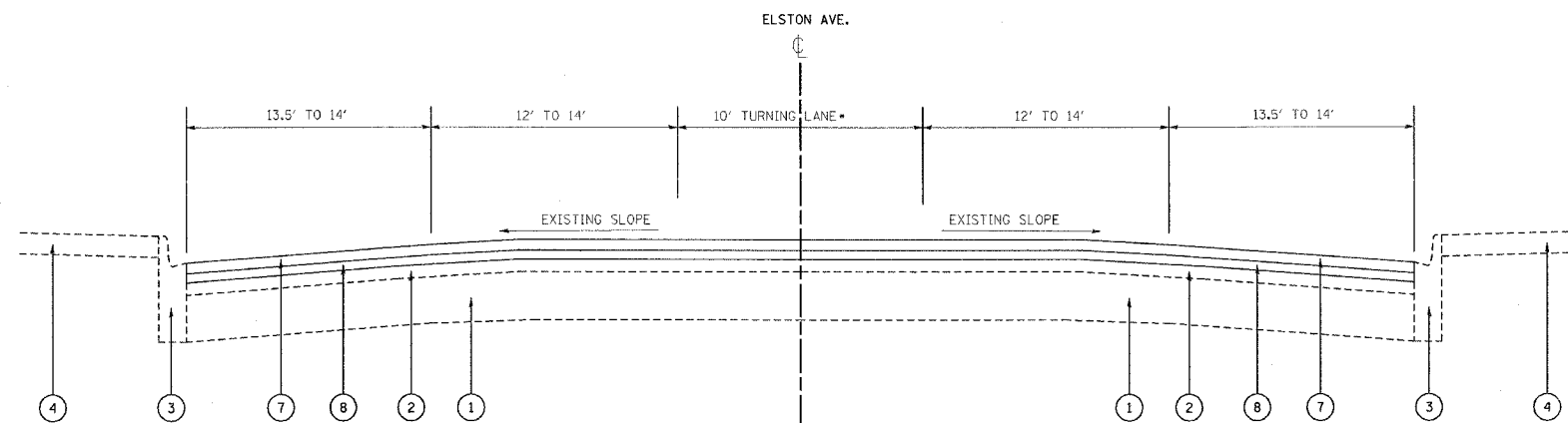
CONTRACT # 62322



EXISTING CROSS SECTION
 *STA. 122+57 TO STA. 122+98
 STA. 124+45 TO STA. 130+58

LEGEND

- ① EXISTING P.C.C. PAVEMENT, 9"±
- ② EXISTING HMA SURFACE 3"±
- ③ EXISTING COMBINATION CONCRETE CURB & GUTTER, TYPE B-6.12
- ④ EXISTING P.C. CONCRETE SIDEWALK
- ⑤ EXISTING GRANITE BLOCKS, RAILS, AND WOOD
- ⑥ PROPOSED HMA SURFACE REMOVAL 2 1/4"
- ⑦ PROPOSED HMA SURFACE COURSE, MIX "D", N70, 1 1/2"
- ⑧ PROPOSED POLYMERIZED LEVELING BINDER (MACHINE METHOD), IL-4.75, N50, 3/4"



PROPOSED CROSS SECTION
 *STA. 122+57 TO STA. 122+98
 STA. 144+45 TO STA. 130+58

HOT-MIX ASPHALT MIXTURE REQUIREMENTS

MIXTURE TYPE	AC TYPE	AIR VOIDS (%)
POLYMERIZED LEVELING BINDER (MM), IL-4.75, N50, 3/4"	SBS/SBR 76-28/-22	4% @ 50 GYR
HOT-MIX ASPHALT SURFACE COURSE, MIX "D" N70, 1 1/2"	PG 64-22	4% @ 70 GYR
HMA REPLACEMENT OVER PATCHES, BINDER (IL-19.0 MM)	PG 64-22*	4% @ 70 GYR

THE UNIT WEIGHT USED TO CALCULATE ALL HOT-MIX ASPHALT SURFACE MIXTURE QUANTITIES IS 112 LBS/SY/IN.

* WHEN RAP EXCEEDS 20%, THE NEW ASPHALT BINDER IN THE MIX SHALL BE PG 58-22.

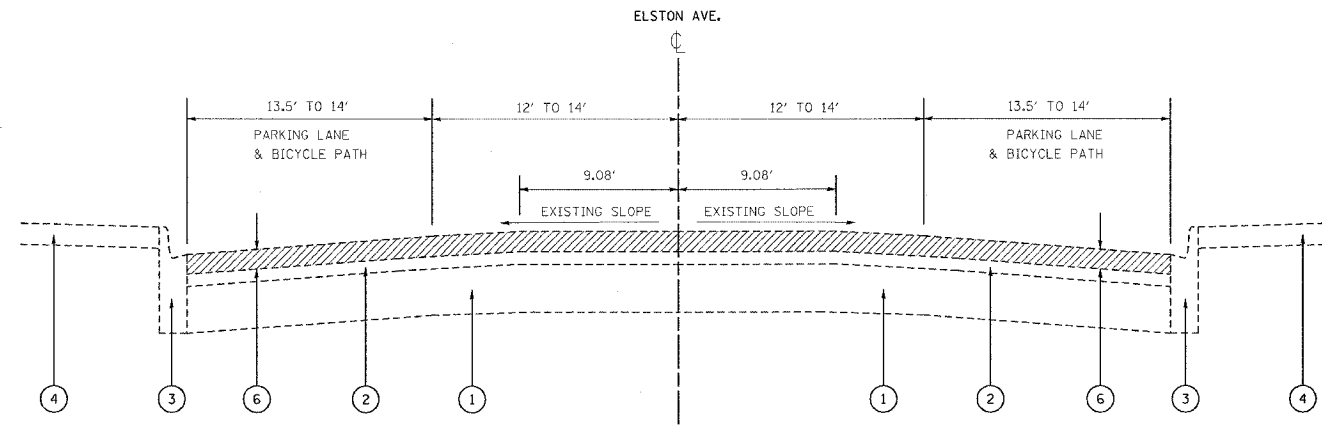
REVISIONS	
NAME	DATE

ILLINOIS DEPARTMENT OF TRANSPORTATION
TYPICAL SECTIONS
ELSTON AVE.
ILL 50 TO LOWELL AVE.

SCALE: VERT. NONE
 HORIZ.
 DATE 7/23/2007
 DRAWN BY C.A.D.D.
 CHECKED BY

F.A.I.L. RTE.	SECTION	COUNTY	TOTAL SHEETS	SHEET NO.
3528	2001-143RS	COOK	19	5
STA.		TO STA.		
FED. ROAD DIST. NO.	ILLINOIS	FED. AID PROJECT		

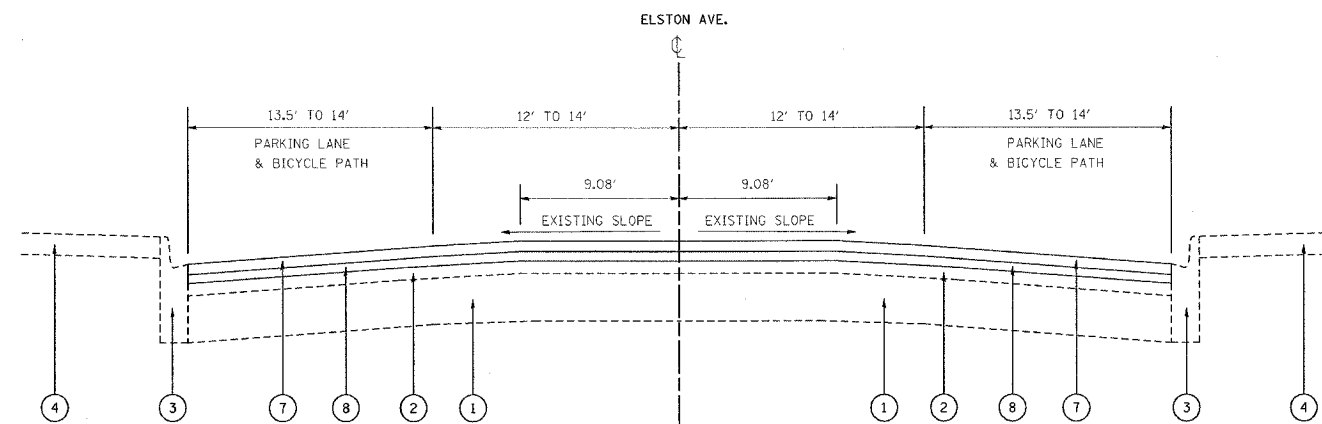
CONTRACT * 62322



EXISTING CROSS SECTION
STA. 130+58 TO STA. 161+39

LEGEND

- ① EXISTING P.C.C. PAVEMENT, 9"±
- ② EXISTING HMA SURFACE 3"±
- ③ EXISTING COMBINATION CONCRETE CURB & GUTTER, TYPE B-6.12
- ④ EXISTING P.C. CONCRETE SIDEWALK
- ⑤ EXISTING GRANITE BLOCKS, RAILS, AND WOOD
- ⑥ PROPOSED HMA SURFACE REMOVAL 2 1/4"
- ⑦ PROPOSED HMA SURFACE COURSE, MIX "D", N70, 1 1/2"
- ⑧ PROPOSED POLYMERIZED LEVELING BINDER (MACHINE METHOD), IL-4.75, N50, 3/4"



PROPOSED CROSS SECTION
STA. 130+58 TO STA. 161+39

REVISIONS	
NAME	DATE

ILLINOIS DEPARTMENT OF TRANSPORTATION

TYPICAL SECTIONS
ELSTON AVE.
ILL 50 TO LOWELL AVE.

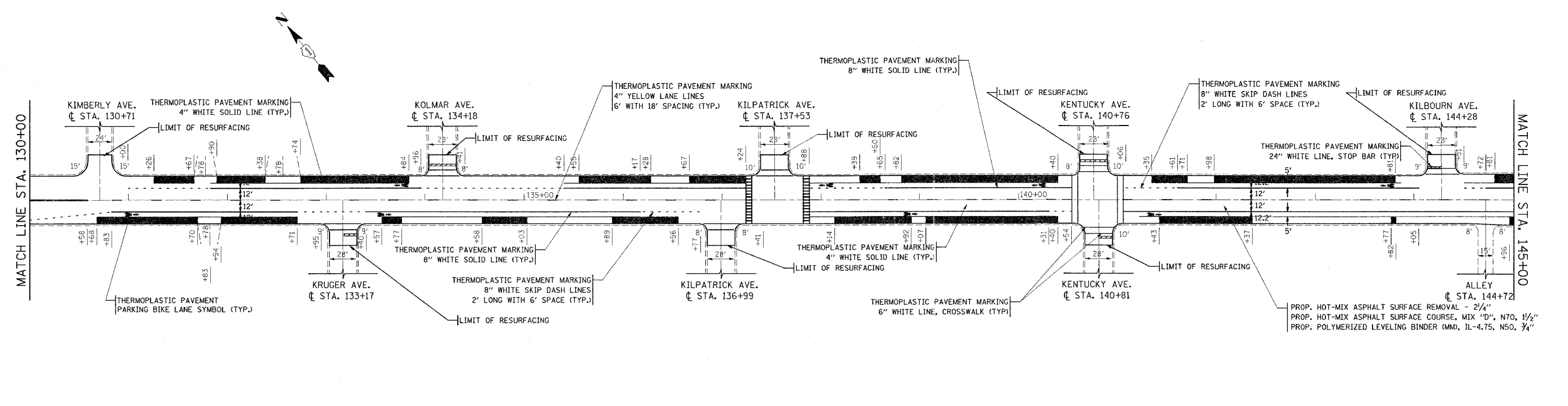
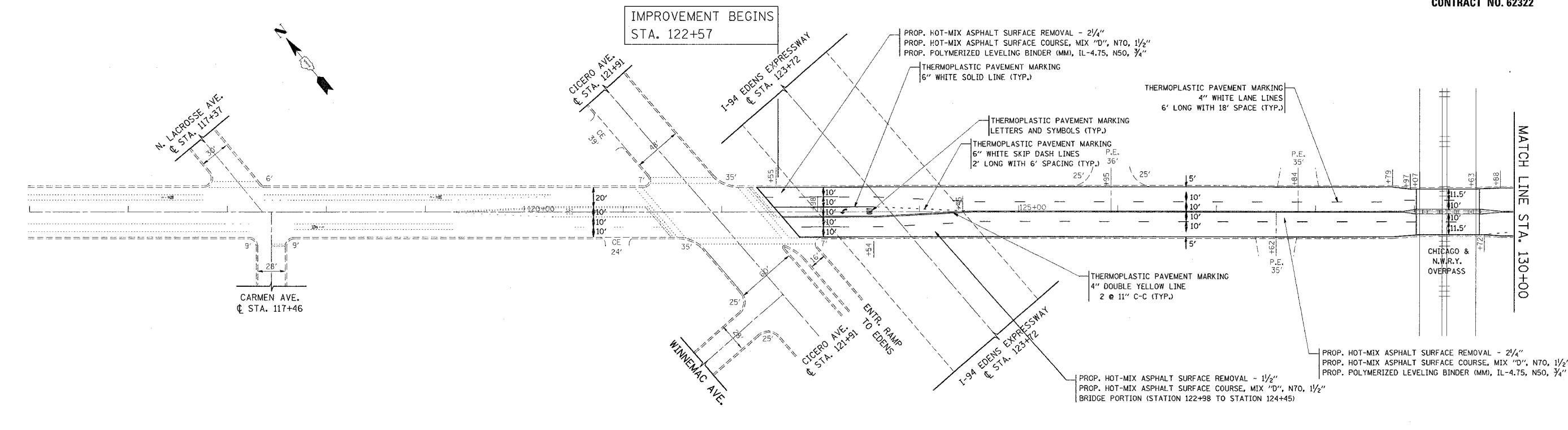
SCALE: VERT. NONE
HORIZ. NONE
DATE 7/23/2007

DRAWN BY C.A.D.D.
CHECKED BY

7/23/2007
c:\p\project\elstn\5001\design_cad.dgn

F.A.U. RTE.	SECTION	COUNTY	TOTAL SHEETS	SHEET NO.
3528	2001-143 RS	COOK	19	6
STA. 115+00		TO STA. 145+00		
FED. ROAD DIST. NO.		ILLINOIS	FED. AID PROJECT	

CONTRACT NO. 62322



NOTES:

PERMANENT PAVEMENT MARKINGS OF THE BRIDGE PORTION SHALL BE THERMOPLASTIC (OF THE EXTRUDED TYPE) AND SHOULD BE PLACED IN ACCORDANCE WITH "CITY OF CHICAGO TYPICAL PAVEMENT MARKINGS" DETAIL (TC-24).

REVISIONS	
NAME	DATE

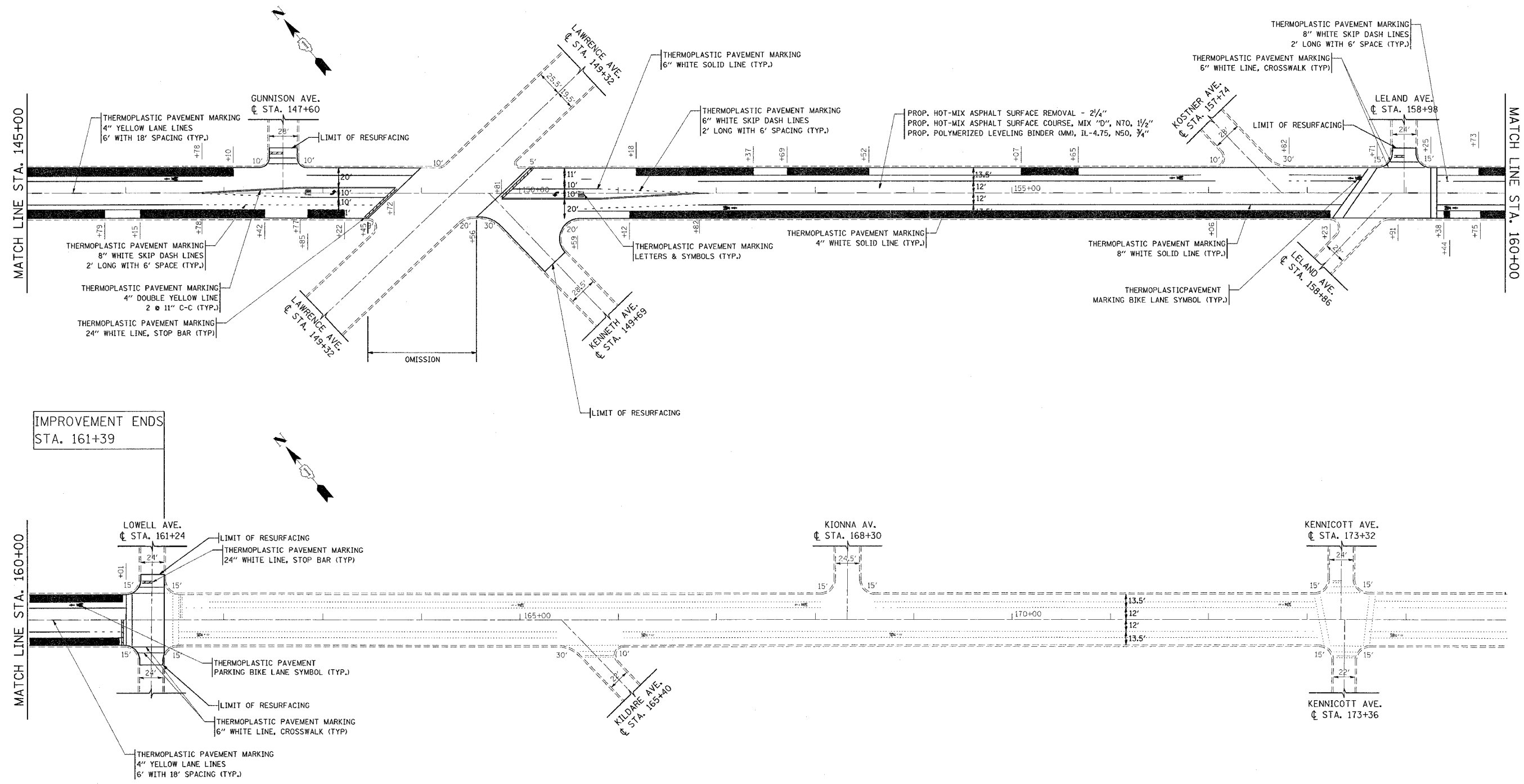
ILLINOIS DEPARTMENT OF TRANSPORTATION
 F.A.U. 3528 - ELSTON AVENUE
 ILL 50 TO LOWELL AVE.
 ROADWAY PLAN AND PAVEMENT
 MARKING PLAN

SCALE: VERT. 1"=50'
 HORIZ. 1"=50'

DATE _____ DRAWN BY _____
 CHECKED BY _____

F.A.U. RTE.	SECTION	COUNTY	TOTAL SHEETS	SHEET NO.
3528	2001-143 RS	COOK	19	7
STA. 145+00		TO STA. 175+00		
FED. ROAD DIST. NO.	ILLINOIS	FED. AID PROJECT		

CONTRACT NO. 62322



IMPROVEMENT ENDS
STA. 161+39

REVISIONS	
NAME	DATE

ILLINOIS DEPARTMENT OF TRANSPORTATION
 F.A.U. 3528 - ELSTON AVENUE
 ILL 50 TO LOWELL AVE.
ROADWAY PLAN AND PAVEMENT MARKING PLAN
 SCALE: VERT. 1"=50'
 DATE _____ DRAWN BY _____
 CHECKED BY _____

F.A.U. RTE.	SECTION	COUNTY	TOTAL SHEETS	SHEET NO.
3528	2001-143 RS	COOK	19	8
STA.	TO STA.			
FED. ROAD DIST. NO.	ILLINOIS	FED. AID PROJECT		

CONTRACT NO. 62322
D-91-450-01

GENERAL NOTES

PLAN DIMENSIONS AND DETAILS RELATIVE TO THE EXISTING STRUCTURE HAVE BEEN TAKEN FROM EXISTING PLANS AND ARE SUBJECT TO NOMINAL CONSTRUCTION VARIATIONS. IT SHALL BE THE CONTRACTOR'S RESPONSIBILITY TO VERIFY SUCH DIMENSION AND DETAILS IN THE FIELD AND MAKE NECESSARY APPROVED ADJUSTMENTS PRIOR TO CONSTRUCTION OR ORDERING OF MATERIALS. SUCH VARIATION SHALL NOT BE CAUSE FOR ADDITIONAL COMPENSATION FOR A CHANGE IN THE SCOPE OF WORK, HOWEVER, THE CONTRACTOR WILL BE PAID FOR THE ACTUAL QUANTITY FURNISHED AT THE UNIT BID PRICE FOR THE WORK.

CONTRACTOR MUST EXERCISE CARE NOT TO DAMAGE THE EXISTING JOINTS AT THE ABUTMENTS DURING THE EXISTING OVERLAY REMOVAL AND PLACEMENT OF NEW HMA OVERLAY. ANY DAMAGE TO THE JOINTS SHOULD BE REPAIRED AT THE CONTRACTOR'S EXPENSE AS DIRECTED BY THE ENGINEER.

TOTAL BILL OF MATERIALS

Item	Unit	Quantity
HMA Surface Removal, 1 1/2"	Sq. Yd.	852
HMA Surface Course, Mix "D", N 70	Ton	72

TRAFFIC DATA

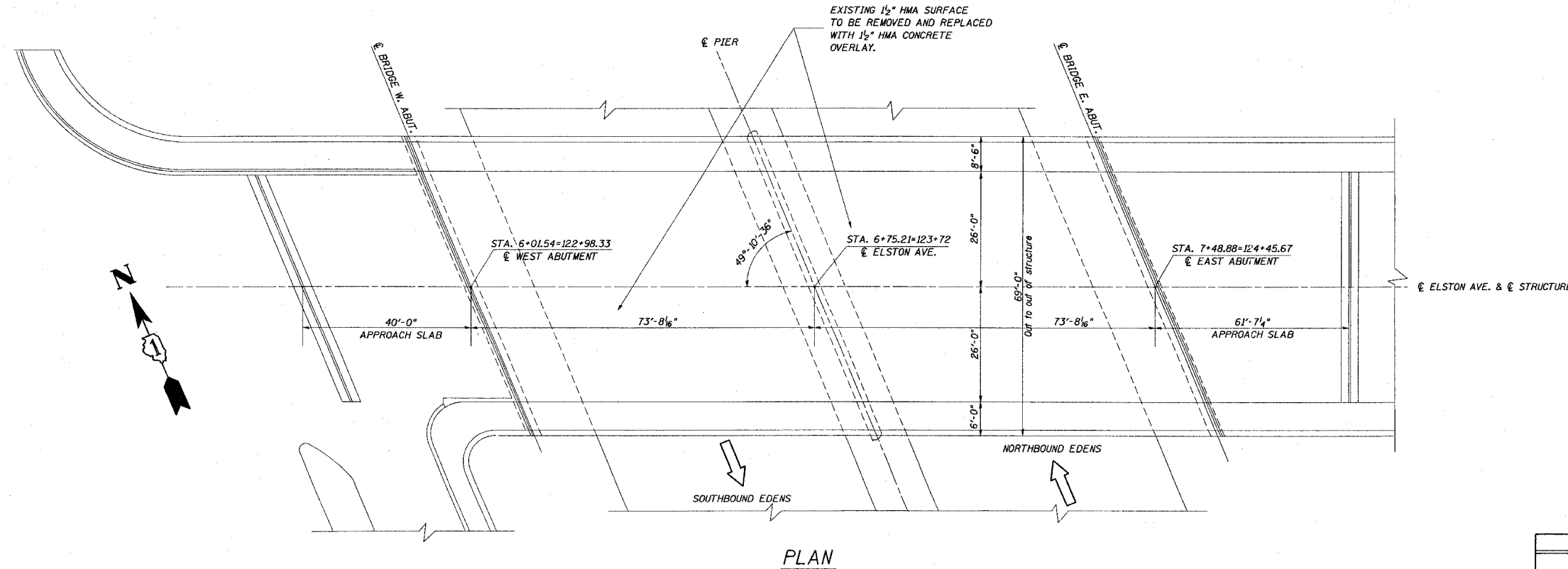
ADT = 15,900
SPEED LIMIT = 30 MPH

REVISIONS	
NAME	DATE

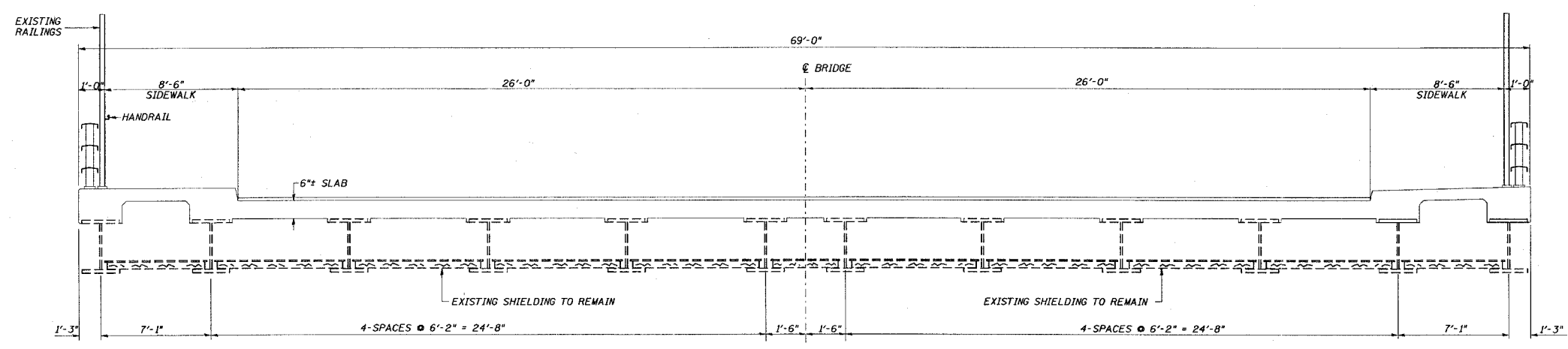
ILLINOIS DEPARTMENT OF TRANSPORTATION
**ELSTON AVENUE OVER I-94
PLAN, ELEVATION AND
CROSS SECTION
S.N. 016-0610**

SCALE: NONE
DATE: JULY, 2007

DRAWN BY: MVT
CHECKED BY: RSS



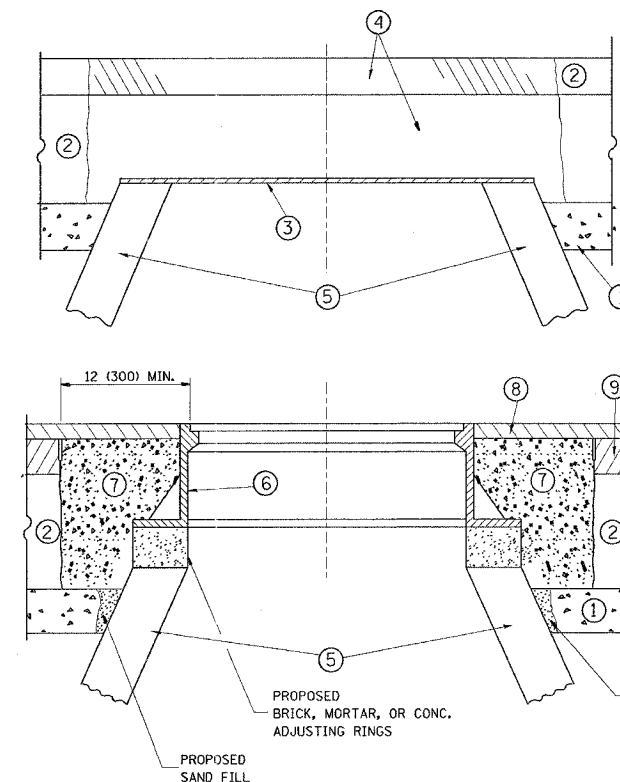
PLAN



CROSS SECTION

7/17/2007
 c:\projects\elstn\elstn2440\400.m32
 DISTRICT ONE - DESIGN
 PLAN PREPARATION JOSE A. DOMINGUEZ / RUSS SINHA (847) 705-4209 / ATTENTION MARK V. TINIAKOS (847) 705-4266

F.A.I.I. RTE.	SECTION	COUNTY	TOTAL SHEETS	SHEET NO.
3528	2001-143RS	COOK	19	9
STA.		TO STA.		
FED. ROAD DIST. NO. 1		ILLINOIS FED. AID PROJECT		



CONSTRUCTION PROCEDURES

STAGE 1 (BEFORE PAVEMENT MILLING)

- A) REMOVE A MINIMUM OF 12 (300) OF THE PAVEMENT FROM AROUND THE STRUCTURE.
- B) REMOVE THE EXISTING FRAME AND LID FROM THE STRUCTURE.
- C) COVER THE STRUCTURE OPENING WITH A 36 (900) DIAMETER METAL PLATE.
- D) BACKFILL WITH CRUSHED STONE AND A MINIMUM 1 1/2 (40) THICK HMA SURFACE MIX APPROVED BY THE ENGINEER.

STAGE 2 (AFTER PAVEMENT MILLING)

- A) REMOVE THE HMA SURFACE MIX AND CRUSHED STONE.
- B) INSTALL THE FRAME AND LID; ADJUST THE FRAME TO ITS FINAL SURFACE ELEVATION.
- C) THE SURROUNDING SPACE SHALL BE FILLED WITH CLASS SI CONCRETE, OR HMA SURFACE COURSE OR HMA BINDER COURSE TO THE ELEVATION OF THE SURFACE OF THE EXISTING BASE COURSE OR THE BINDER COURSE.

THE PROCEDURE EXPLAINED ABOVE SHALL CONFORM TO THE APPLICABLE PORTIONS OF SECTIONS 353, 406, 602, AND 603 OF THE STANDARD SPECIFICATIONS.

LEGEND

- ① SUB-BASE GRANULAR MATERIAL
- ② EXISTING PAVEMENT
- ③ 36 (900) DIAMETER METAL PLATE
- ④ PROPOSED CRUSHED STONE AND HMA SURFACE MIX
- ⑤ EXISTING STRUCTURE
- ⑥ FRAME AND LID (SEE NOTES)
- ⑦ CLASS SI CONCRETE, HMA SURFACE COURSE OR HMA BINDER COURSE
- ⑧ PROPOSED HMA SURFACE COURSE
- ⑨ PROPOSED HMA BINDER COURSE

LOCATION OF STRUCTURES:

THE CONTRACTOR WILL BE REQUIRED TO KEEP A RECORD OF THE LOCATIONS OF THE BURIED STRUCTURES ACCORDING TO THE STATION AND DISTANCE LEFT OR RIGHT OF THE CENTERLINE OF PAVEMENT. UPON COMPLETION OF THE WORK, THE CONTRACTOR WILL DELIVER THE RECORD TO THE ENGINEER.

BASIS OF PAYMENT: THIS WORK WILL BE PAID FOR AT THE CONTRACT UNIT PRICE PER EACH FOR "FRAMES AND LIDS TO BE ADJUSTED, SPECIAL"

NEW FRAMES AND LIDS, WHEN SPECIFIED, WILL BE PAID FOR SEPARATELY.

NOTES:

EXISTING BROKEN FRAMES AND LIDS SHALL BE REMOVED AND DISPOSED OF BY THE CONTRACTOR AND SHALL BE REPLACED AS DIRECTED BY THE ENGINEER. REPLACEMENT FRAMES AND LIDS WILL BE PAID FOR IN ACCORDANCE WITH ARTICLE 109.04 OF THE STANDARD SPECIFICATIONS UNLESS A SEPARATE PAY ITEM HAS BEEN PROVIDED.

IF THE EXISTING LIDS ARE OPEN, THE FRAME WILL BE ADJUSTED TO THE ELEVATION OF THE MILLED PAVEMENT SURFACE PRIOR TO THE MILLING OPERATION. THE FRAME WILL NOT BE REMOVED AND COVERED BY THE METAL PLATE.

CITY OF CHICAGO CASTINGS ARE THE PROPERTY OF THE CITY AND THE CONTRACTOR SHALL NOTIFY THE CITY FOR REMOVAL AND DISPOSITION OF THE CASTINGS.

THE METAL PLATE USED TO COVER THE STRUCTURE SHALL REMAIN THE PROPERTY OF THE CONTRACTOR.

WHEN STRUCTURES ARE TO BE ADJUSTED OR RECONSTRUCTED, THE LOWERING AND RAISING OF THE FRAMES AND LIDS WILL NOT BE PAID FOR SEPARATELY BUT WILL BE INCLUDED IN THE COST OF THE CORRESPONDING PAY ITEM.

DETAILS FOR FRAMES AND LIDS ADJUSTMENT WITH MILLING

ALL DIMENSIONS ARE IN INCHES (MILLIMETERS) UNLESS OTHERWISE SHOWN

REVISIONS	
NAME	DATE
R. SHAH	10/25/94
R. SHAH	01/30/95
R. SHAH	03/10/95
A. ABBAS	03/21/97
R. WIEDEMAN	05/14/04
R. BORO	01/01/07

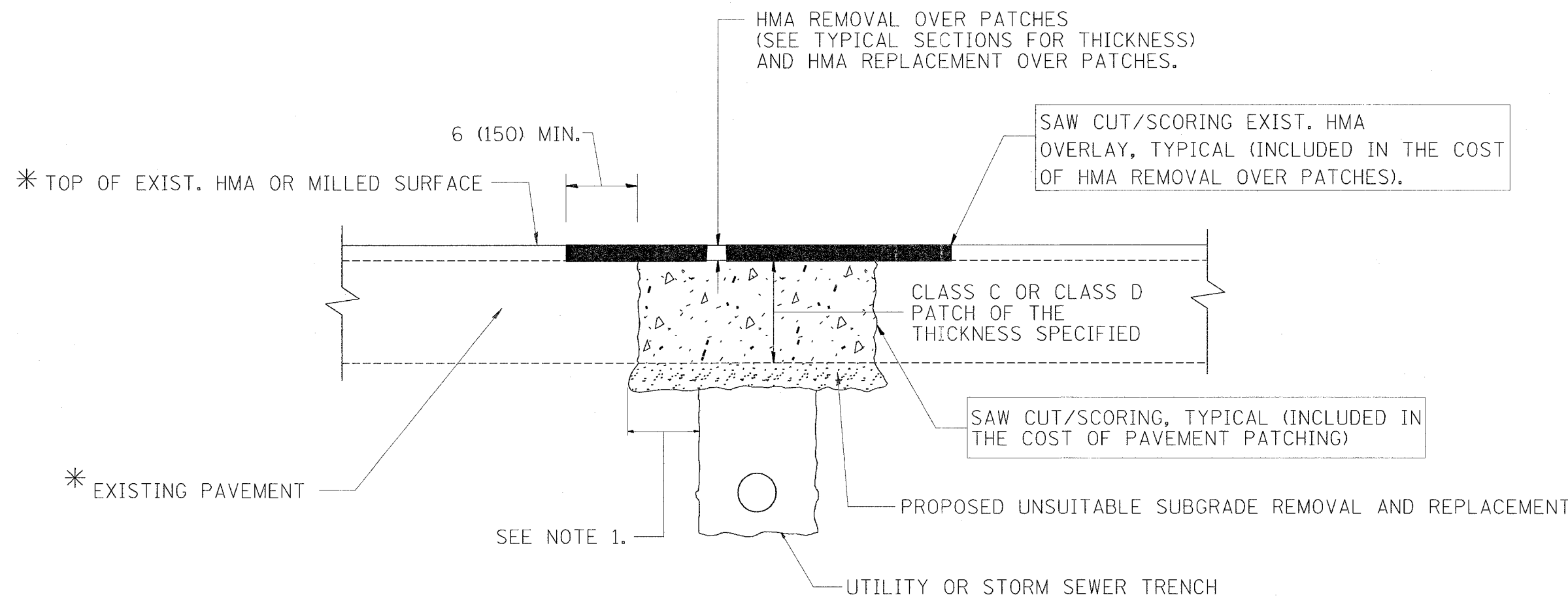
ILLINOIS DEPARTMENT OF TRANSPORTATION
**DETAILS FOR
 FRAMES AND LIDS ADJUSTMENT
 WITH MILLING**

SCALE: VERT. NONE
 HORIZ.

DRAWN BY
 CHECKED BY

BD600-03 (BD-8)

F.A.H. RTE.	SECTION	COUNTY	TOTAL SHEETS	SHEET NO.
3528	2001-143RS	COOK	19	10
STA.		TO STA.		
FED. ROAD DIST. NO. 1		ILLINOIS	FED. AID PROJECT	



* SEE TYPICAL SECTIONS FOR THICKNESS AND MATERIALS

NOTES:

1. THE WIDTH OF THE FULL DEPTH PATCH OVER A TRENCH SHALL BE 12 (300) WIDER ON EACH SIDE OF THE TRENCH.
2. FOR METHOD OF MEASUREMENT AND BASIS OF PAYMENT, SEE RECURRING SPECIAL PROVISION "PATCHING WITH HOT-MIX ASPHALT OVERLAY REMOVAL".

SEQUENCE OF CONSTRUCTION

1. REMOVE THE EXISTING HMA MATERIAL OVER THE AREA TO BE PATCHED.
2. REMOVE AND REPLACE FULL DEPTH PATCHES
3. REPLACE HMA MATERIAL OVER THE AREA TO BE PATCHED.

ALL DIMENSIONS ARE IN INCHES (MILLIMETERS) UNLESS OTHERWISE SHOWN.

REVISIONS	
NAME	DATE
R. SHAH	10/25/94
R. SHAH	01/14/95
R. SHAH	03/23/95
R. SHAH	04/24/95
A. HOUSEH	03/15/96
A. ABBAS	03/21/97
A. ABBAS	01/20/98
ART ABBAS	04/27/98
R. BORO	01/01/07

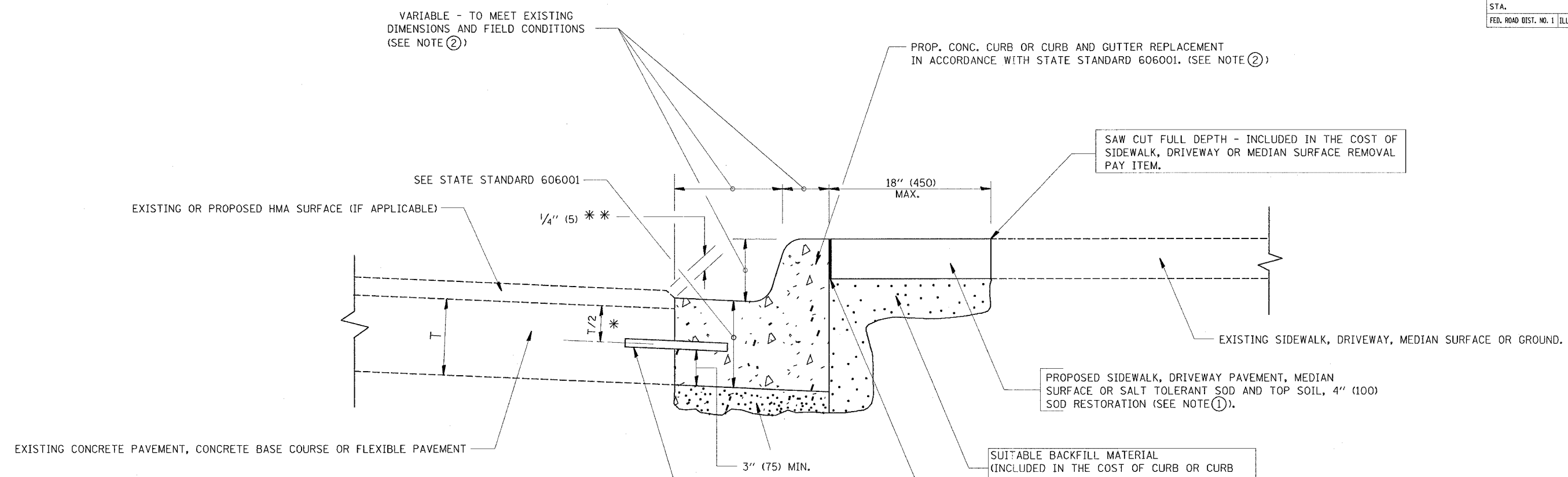
ILLINOIS DEPARTMENT OF TRANSPORTATION
PAVEMENT PATCHING FOR HMA SURFACED PAVEMENT

SCALE: VERT. NONE
 HORIZ. NONE

DRAWN BY
 CHECKED BY
 BD400-04 (BD-22)

PLOT DATE = 7/23/2007
 FILE NAME = C:\Documents and Settings\quresh\p\DeskTop\EIaton Ave. - 62322\bd22.dgn
 USER NAME = quresh

F.A.U. RTE.	SECTION	COUNTY	TOTAL SHEETS	SHEET NO.
3528	2001-143RS	COOK	19	11
STA.		TO STA.		
FED. ROAD DIST. NO. 1 ILLINOIS FED. AID PROJECT				



- * 3" (75) MINIMUM FROM TOP AND BOTTOM OF THE CONCRETE PAVEMENT OR BASE COURSE.
- ** IF THE FINAL SURFACE OF THE PAVEMENT IS CONCRETE, THE GUTTER IS TO BE FLUSH WITH THE PAVEMENT.

- NOTE: ① SIDEWALK, DRIVEWAY PAVEMENT OR MEDIAN SURFACE SHALL BE SIMILAR TO THE MATERIAL BEING REMOVED AND WILL BE PAID FOR SEPARATELY.
- SALT TOLERANT SOD AND TOP SOIL, 4" (100) RESTORATION WILL NOT BE PAID FOR SEPARATELY, BUT SHALL BE INCLUDED IN THE COST OF CURB OR CURB AND GUTTER REMOVAL AND REPLACEMENT.
- ② CURB OR CURB AND GUTTER REPLACEMENT SHALL MATCH THE SHAPE OF THE EXISTING CURB OR CURB AND GUTTER UNLESS OTHERWISE SPECIFIED.
- ③ FOR CURB OR CURB AND GUTTER REMOVAL AND REPLACEMENT ADJACENT TO FLEXIBLE PAVEMENT DELETE EPOXY COATED TIE BARS.
- ④ LONGITUDINAL BARS, IF ENCOUNTERED IN THE EXISTING CURB OR CURB AND GUTTER, ARE NOT TO BE REPLACED. CUTTING AND REMOVING LONGITUDINAL BARS SHALL BE INCLUDED IN THE COST OF CURB OR CURB AND GUTTER REMOVAL AND REPLACEMENT.
- ⑤ THE COST OF HMA SURFACE REMOVAL IN THE EXISTING GUTTER FLAG SHALL BE INCLUDED IN THE COST OF THE CURB AND GUTTER REMOVAL AND REPLACEMENT.
- ⑥ THE REMOVAL AND REPLACEMENT OF THE EXISTING CURB OR CURB AND GUTTER SHALL BE DONE IN ACCORDANCE WITH THE APPLICABLE PORTIONS OF SECTION 440 AND 606 OF THE STANDARD SPECIFICATIONS.
- ⑦ THE LOCATIONS OF REMOVAL AND REPLACEMENT OF EXISTING CURB OR CURB AND GUTTER SHALL BE DETERMINED BY THE RESIDENT ENGINEER AT THE TIME OF CONSTRUCTION.

BASIS OF PAYMENT:
 THIS WORK WILL BE PAID FOR AT THE CONTRACT UNIT PRICE PER FOOT (METER) FOR "CURB REMOVAL AND REPLACEMENT" OR "COMBINATION CONCRETE CURB AND GUTTER REMOVAL AND REPLACEMENT".

ALL DIMENSIONS ARE IN INCHES (MILLIMETERS) UNLESS OTHERWISE SHOWN.

REVISIONS	
NAME	DATE
A. HOUSEH	03/11/94
R. SHAH	02/24/95
R. SHAH	03/02/95
R. SHAH	08/19/96
R. SHAH	09/12/96
R. SHAH	09/19/96
R. SHAH	10/03/96
A. ABBAS	03/21/97
M. GOMEZ	01/22/01
R. BORO	01/01/07

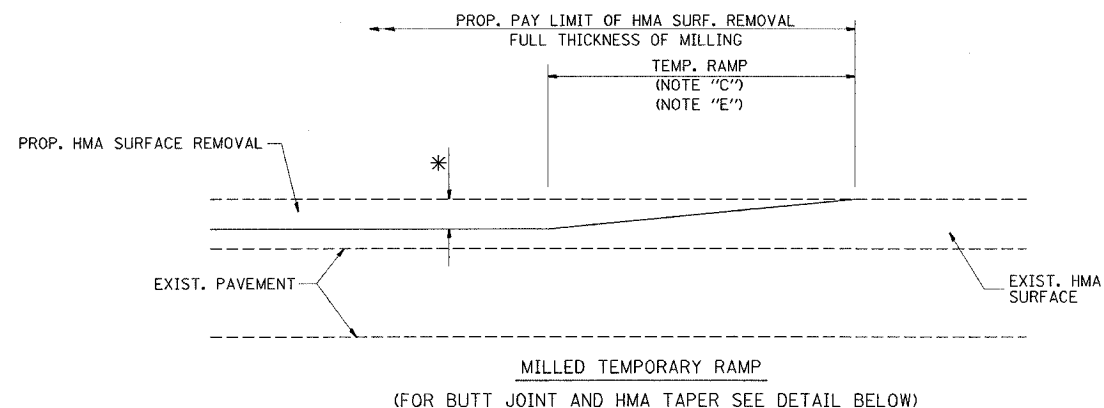
ILLINOIS DEPARTMENT OF TRANSPORTATION
 CURB OR CURB AND GUTTER REMOVAL AND REPLACEMENT

SCALE: VERT. NONE
 HORIZ. DRAWN BY
 CHECKED BY

CURB OR CURB AND GUTTER REMOVAL AND REPLACEMENT

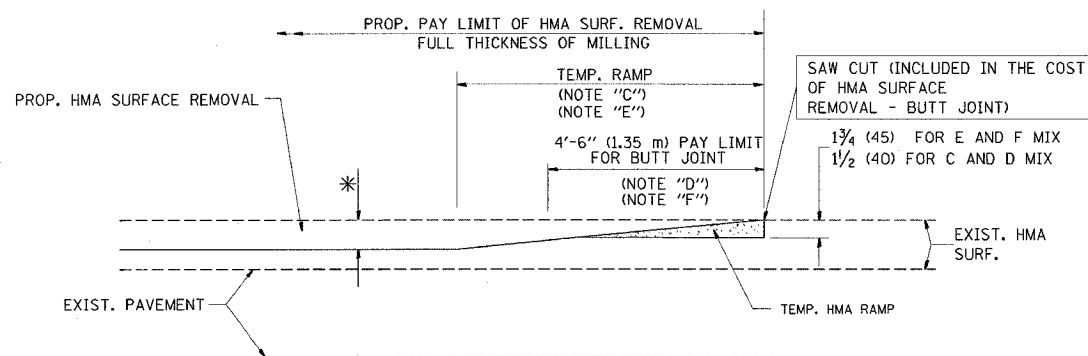
PLOT DATE = 7/25/2007
 PLOT NAME = C:\Users\gshah\Documents and Settings\gshah\Desktop\Etalon Ave - 62322\bd24.dgn
 PLOT SCALE = 50.0000 / IN.
 USER NAME = gshah

F.A.I.D. RTE.	SECTION	COUNTY	TOTAL SHEETS	SHEET NO.
3528	2001-143RS	COOK	19	12
STA.		TO STA.		
FED. ROAD DIST. NO. 1 ILLINOIS FED. AID PROJECT				



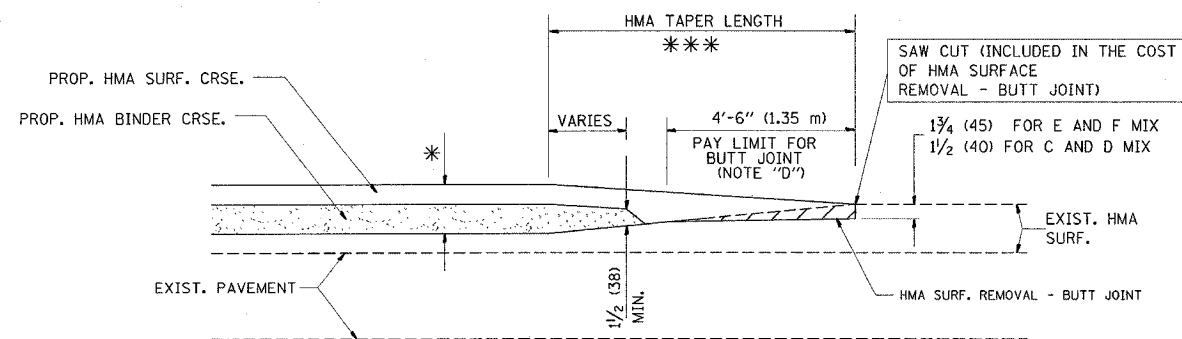
MILLED TEMPORARY RAMP
(FOR BUTT JOINT AND HMA TAPER SEE DETAIL BELOW)

OPTION 1

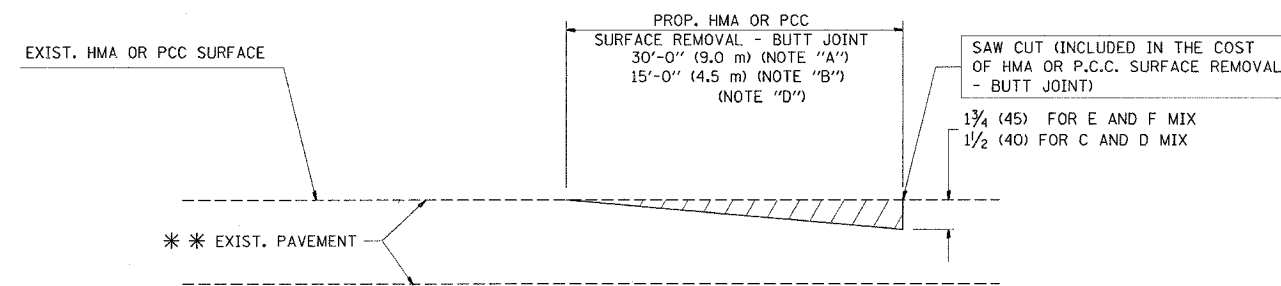


HMA CONSTRUCTED TEMPORARY RAMP
(FOR BUTT JOINT AND HMA TAPER SEE DETAIL BELOW)

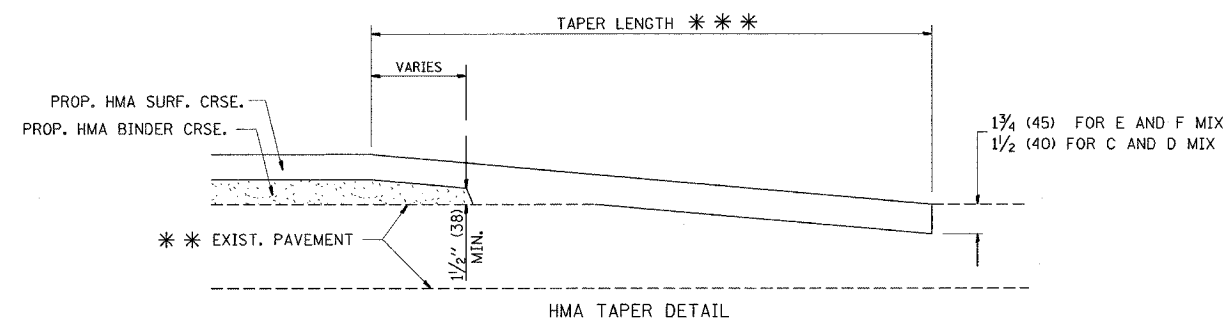
OPTION 2
TYPICAL TEMPORARY RAMP



TYPICAL BUTT JOINT AND HMA TAPER
FOR MILLING AND RESURFACING



BUTT JOINT DETAIL



HMA TAPER DETAIL

TYPICAL BUTT JOINT AND HMA TAPER
FOR RESURFACING ONLY

*** PC CONCRETE, HMA OR HMA RESURFACED PAVEMENT.

NOTES

- A: MAINLINE ROADWAYS AND MAJOR SIDE ROADS.
 - B: MINOR SIDE ROADS.
 - C: THE TEMP. RAMP SHALL BE CONSTRUCTED IMMEDIATELY UPON REMOVAL OF THE EXISTING HMA SURFACE.
 - D: THE BUTT JOINT SHALL BE CONSTRUCTED IMMEDIATELY PRIOR TO PLACING THE PROPOSED HMA COURSES.
 - E: TAPER THE TEMP. RAMP AT A RATE OF 3'-0" (900 mm) PER 1 INCH (25 mm) OF MILLING THICKNESS.
 - F: INSTALLATION AND REMOVAL OF THE 4'-6" (1.35 m) TEMP. RAMP IS INCLUDED IN COST OF HMA SURFACE REMOVAL - BUTT JOINT
 - G: SEE ARTICLE 406.08 AND 406.14 OF THE STANDARD SPECIFICATIONS FOR "HMA AND/OR PCC SURFACE REMOVAL, BUTT JOINT".
- * SEE TYPICAL SECTIONS FOR MILLING THICKNESS.
- *** 20'-0" (6.1 m) PER 1 (25) RESURFACING (NOTE "A")
10'-0" (3.0 m) PER 1 (25) RESURFACING (NOTE "B")

ALL DIMENSIONS ARE IN INCHES (MILLIMETERS) UNLESS OTHERWISE SHOWN.

BASIS OF PAYMENT:

THE BUTT JOINT WILL BE PAID FOR AT THE CONTRACT UNIT PRICE PER SQUARE YARD (SQUARE METER) FOR "HOT-MIX ASPHALT SURFACE REMOVAL - BUTT JOINT" OR FOR "PORTLAND CEMENT CONCRETE SURFACE REMOVAL - BUTT JOINT".

REVISIONS	
NAME	DATE
M. DE YONG	6-13-90
M. DE YONG	7-3-90
M. DE YONG	3-27-92
R. SHAH	09/09/94
R. SHAH	10/25/94
A. ABBAS	03/21/97
M. GOMEZ	04/06/01
R. BORO	01/01/07

ILLINOIS DEPARTMENT OF TRANSPORTATION

BUTT JOINT AND
HMA TAPER
DETAILS

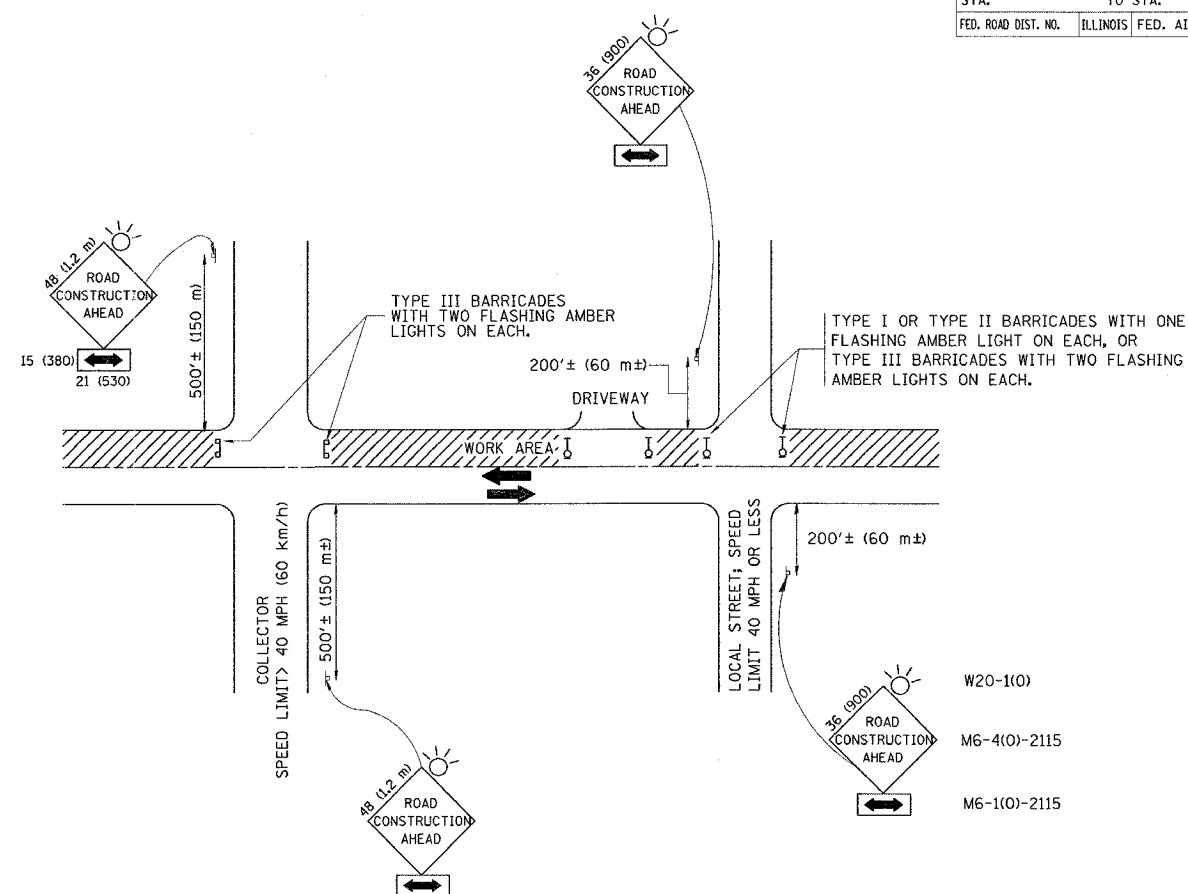
SCALE: VERT. NONE
HORIZ. NONE

DRAWN BY
CHECKED BY

BD400-05 (VI-BD32)

PLOT DATE = 7/23/2007
FILE NAME = C:\Documents and Settings\gureshga\Desktop\Elison Ave. - 62322\bd32.dgn
PLOT SCALE = 50.0000 / 1" = 100'-0"
USER NAME = gureshga

F.A.I.J. RTE.	SECTION	COUNTY	TOTAL SHEETS	SHEET NO.
3528	2001-143RS	COOK	19	13
STA.		TO STA.		
FED. ROAD DIST. NO.		ILLINOIS FED. AID PROJECT		



TRAFFIC CONTROL AND PROTECTION FOR SIDE ROADS, INTERSECTIONS, AND DRIVEWAYS

NOTES:

- A. FOR NO LANE RESTRICTION ON THE SIDE ROAD OR DRIVEWAYS
 - 1. SIDE ROAD WITH A SPEED LIMIT OF 40 MPH (60 km/h) OR LESS AS SHOWN ON THE DRAWING AND AS DIRECTED BY THE ENGINEER:
 - a) ONE ROAD CONSTRUCTION AHEAD SIGN 36 x 36 (900x900) WITH A FLASHER AND FLAG MOUNTED ON IT APPROXIMATELY 200' (60 m) IN ADVANCE OF THE MAIN ROUTE.
 - b) THE CLOSED PORTION OF THE MAIN ROUTE SHALL BE PROTECTED BY BLOCKING WITH TYPE I, TYPE II OR TYPE III BARRICADES, 1/3 OF THE CROSS SECTION OF THE CLOSED PORTION.
 - 2. SIDE ROAD WITH A SPEED LIMIT GREATER THAN 40 MPH (60 km/h) AS SHOWN ON THE DRAWING AND AS DIRECTED BY THE ENGINEER:
 - a) ONE ROAD CONSTRUCTION AHEAD SIGN 48 x 48 (1.2 m x 1.2 m) WITH A FLASHER MOUNTED ON IT APPROXIMATELY 500' (150 m) IN ADVANCE OF THE MAIN ROUTE.
 - b) THE CLOSED PORTION OF THE MAIN ROUTE SHALL BE PROTECTED BY BLOCKING WITH TYPE III BARRICADES, 1/2 OF THE CROSS SECTION OF THE CLOSED PORTION.
 - 3. WHEN THE SIDE ROAD LIES BETWEEN THE BEGINNING OF THE MAINLINE SIGNING AND THE WORK ZONE, A SINGLE HEADED ARROW (M6-1) SHALL BE USED IN LIEU OF THE DOUBLE HEADED ARROW (M6-4).
- B. FOR A LANE CLOSURE ON A SIDE ROAD OR DRIVEWAY:
 - USE APPLICABLE PORTIONS OF THE TYPICAL APPLICATION OF TRAFFIC CONTROL DEVICES (STD. 701501, STD. 701606 OR THE APPROPRIATE STANDARD). THE SPACING OF SIGNS AND BARRICADES SHALL BE ADJUSTED FOR FIELD CONDITIONS AS DIRECTED BY THE ENGINEER. THE DIRECTIONAL ARROW SHALL BE COVERED OR REMOVED WHEN NO LONGER CONSISTENT WITH THE SIDE ROAD LANE CLOSURE.
- C. ADVANCE WARNING SIGNS ARE TO BE OMITTED ON DRIVEWAY UNLESS OTHERWISE NOTED.
- D. THE TRAFFIC CONTROL AND PROTECTION FOR SIDE ROADS, INTERSECTIONS, AND DRIVEWAYS SHALL BE INCIDENTAL TO THE COST OF SPECIFIED TRAFFIC CONTROL STANDARDS OR ITEMS.

All dimensions are in millimeters (inches) unless otherwise shown.

REVISIONS	
NAME	DATE
LHA	6/89
T. RAMMACHER	09/08/94
J. OBERLE	10/18/95
A. HOUSEH	03/06/96
A. HOUSEH	10/15/96
T. RAMMACHER	01/06/00

ILLINOIS DEPARTMENT OF TRANSPORTATION
 TRAFFIC CONTROL AND PROTECTION
 FOR
 SIDE ROADS, INTERSECTIONS, AND
 DRIVEWAYS

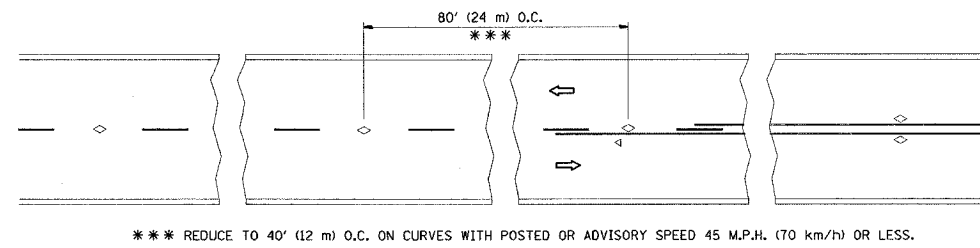
SCALE: NONE

DRAWN BY

CHECKED BY

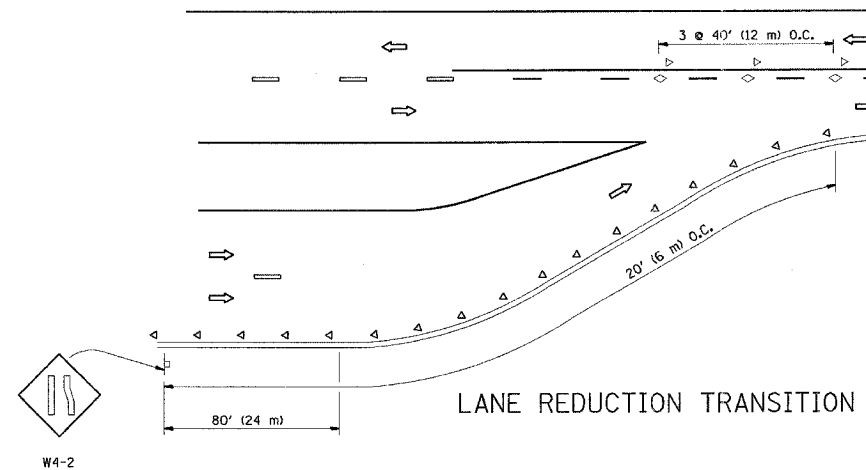
TC-10

F.A.U. RITE:	SECTION	COUNTY	TOTAL SHEETS	SHEET NO.
3528	2001-143RS	COOK	19	14
STA.		TO STA.		
FED. ROAD DIST. NO.		ILLINOIS FED. AID PROJECT		

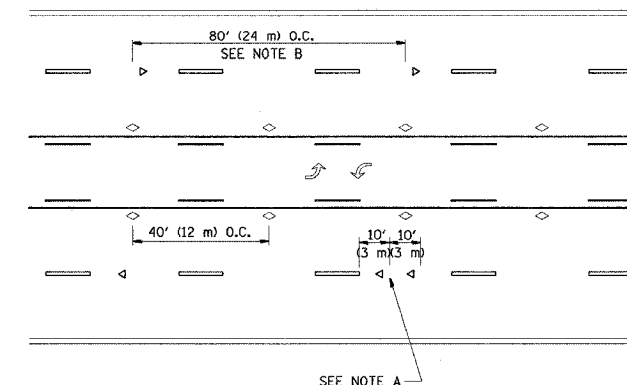


*** REDUCE TO 40' (12 m) O.C. ON CURVES WITH POSTED OR ADVISORY SPEED 45 M.P.H. (70 km/h) OR LESS.

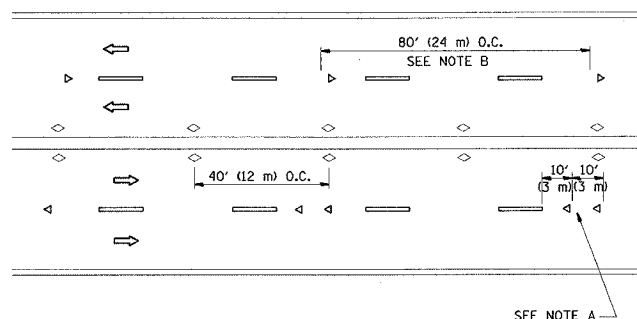
TWO-LANE/TWO-WAY



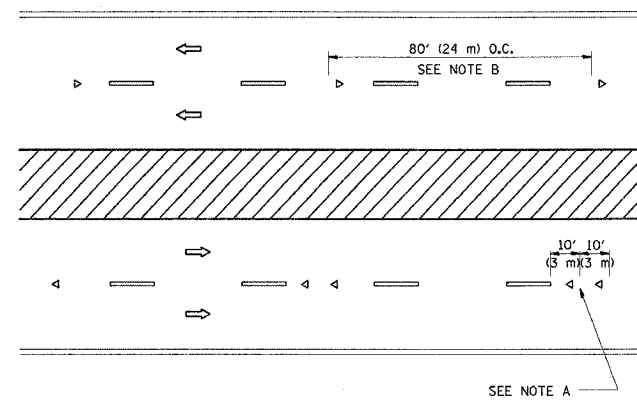
LANE REDUCTION TRANSITION



TWO-WAY LEFT TURN



MULTI-LANE/UNDIVIDED



MULTI-LANE/DIVIDED

GENERAL NOTES

1. MARKERS USED WITH DASHED LINES SHALL BE CENTERED IN THE GAP BETWEEN SEGMENTS.
2. MARKERS USED ADJACENT TO SOLID LINES SHALL BE OFFSET 2 TO 3 (50 TO 75) TOWARD TRAFFIC AS SHOWN.
3. MARKERS THROUGH TANGENTS LESS THAN 500' (150 m) IN LENGTH BETWEEN CURVES SHALL BE INSTALLED AT THE LESSER OF THE TWO CURVE SPACINGS.

SYMBOLS

- YELLOW STRIPE
- WHITE STRIPE
- ◁ ONE-WAY AMBER MARKER
- ◁ ONE-WAY CRYSTAL MARKER (W/O)
- ◊ TWO-WAY AMBER MARKER

LANE MARKER NOTES

- B. REDUCE TO 40' (12 m) O.C. ON CURVES WHERE ADVISORY SPEEDS ARE 10 M.P.H. (20 km/h) LOWER THAN POSTED SPEEDS.
- A. USE DOUBLE LANE LINE MARKERS SPACED AS SHOWN.

DESIGN NOTES

1. DOUBLE LANE LINE MARKERS SHALL BE USED UNLESS SPECIFIED OTHERWISE.
2. EXCEPT AS SHOWN ON THE LANE REDUCTION TRANSITION AND FREEWAY EXIT RAMP DETAIL, MARKERS ARE NOT TO BE SPECIFIED ON RIGHT EDGE LINES.
3. THE EXACT MARKER LIMITS, SPACING, AND COLOR SHOULD BE INCLUDED IN THE PLANS.
4. MARKERS SHOULD NOT BE USED ALONGSIDE CURBS EXCEPT FOR EXTREMELY SHORT SECTIONS OF CURBS WHERE NOT MORE THAN TWO MARKERS WOULD BE INVOLVED.

All dimensions are in Inches (millimeters) unless otherwise shown.

REVISIONS	
NAME	DATE
T. RAMMACHER	09-19-94
T. RAMMACHER	03-12-99
T. RAMMACHER	01-06-00

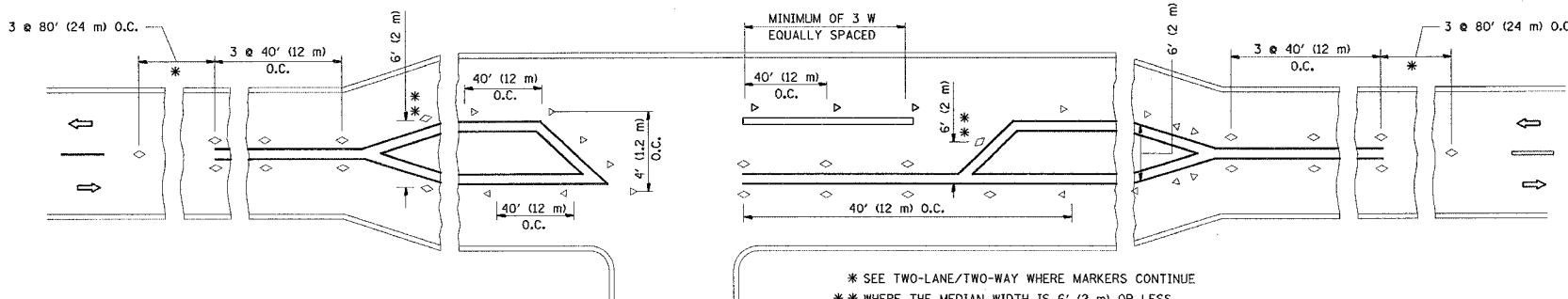
ILLINOIS DEPARTMENT OF TRANSPORTATION
TYPICAL APPLICATIONS
RAISED REFLECTIVE PAVEMENT
MARKERS (SNOW-PLOW RESISTANT)

SCALE: NONE

DRAWN BY CADD

CHECKED BY

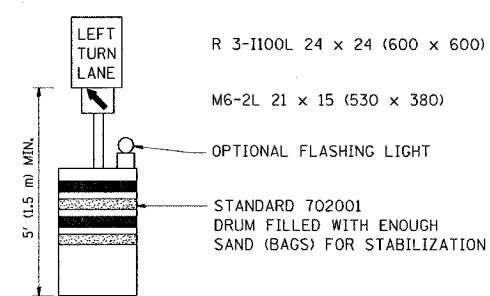
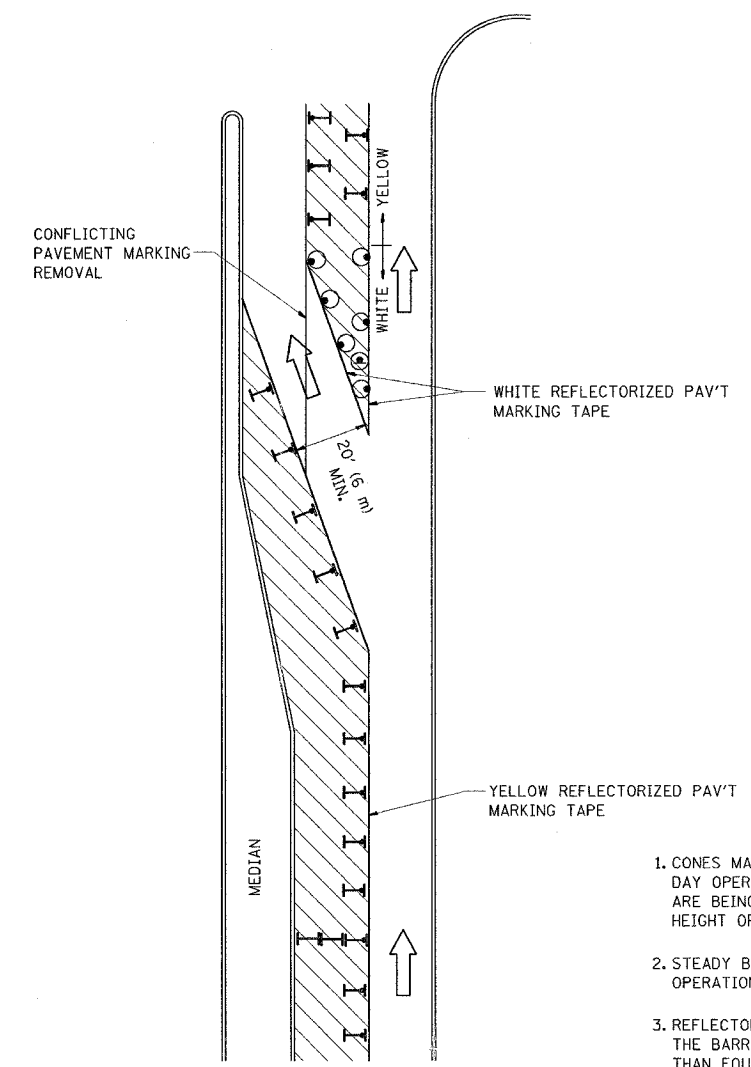
TC-11



LEFT TURN

* SEE TWO-LANE/TWO-WAY WHERE MARKERS CONTINUE
** WHERE THE MEDIAN WIDTH IS 6' (2 m) OR LESS USE TWO-WAY MARKERS.

F.A.U. RTE.	SECTION	COUNTY	TOTAL SHEETS	SHEET NO.
3528	2001-143RS	COOK	19	15
STA.		TO STA.		
FED. ROAD DIST. NO.		ILLINOIS FED. AID PROJECT		



GENERAL NOTES

1. CONES MAY BE SUBSTITUTED FOR BARRICADES OR DRUMS AT HALF THE SPACING DURING DAY OPERATIONS. CONES SHALL BE A MINIMUM OF 28 (710) IN HEIGHT. WHEN CONES ARE BEING USED, THE "LEFT TURN LANE" SIGN MAY BE SKID MOUNTED AT A MINIMUM HEIGHT OF 5' (1.5 m).
2. STEADY BURNING LIGHTS WILL NOT BE REQUIRED ON BARRICADES OR DRUMS FOR DAY OPERATIONS. ALL LIGHTS SHALL BE MONODIRECTIONAL.
3. REFLECTORIZED TEMPORARY PAVEMENT MARKING TAPE SHALL BE PLACED THROUGHOUT THE BARRICADED AREA OF EACH TURN BAY WHERE THE CLOSURE TIME IS GREATER THAN FOURTEEN DAYS.
4. THIS APPLICATION ALSO APPLIES WHEN WORK IS BEING PERFORMED IN THE RIGHT LANE(S) AND THE RIGHT TURN BAY IS TO REMAIN OPEN. UNDER THIS CONDITION, "RIGHT TURN LANE" R3-100 24 x 24 (600 x 600) AND M6-2R 21 x 15 (530 x 380) SHALL BE USED.
5. THESE CONTROLS SHALL SUPPLEMENT MAINLINE TRAFFIC CONTROL FOR LANE CLOSURES.
6. LONGITUDINAL DIMENSIONS MAY BE ADJUSTED TO FIT FIELD CONDITIONS.
7. FORM BT 725 IS REQUIRED.
8. TRAFFIC CONTROL AND PROTECTION AT TURN BAYS (TO REMAIN OPEN TO TRAFFIC) SHALL BE INCLUDED IN THE COST SPECIFIED TRAFFIC CONTROL STANDARDS OR ITEMS.

LEGEND

- WORK AREA
- LANE OPEN TO TRAFFIC
- TYPE I OR II BARRICADE WITH STEADY BURN LIGHT
- DRUM WITH STEADY BURN LIGHT
- DRUM WITH SIGN (WITH OPTIONAL FLASHING LIGHT) SEE DETAIL
- TYPE I OR II CHECK BARRICADE WITH FLASHING LIGHT

All dimensions are in inches (millimeters) unless otherwise shown.

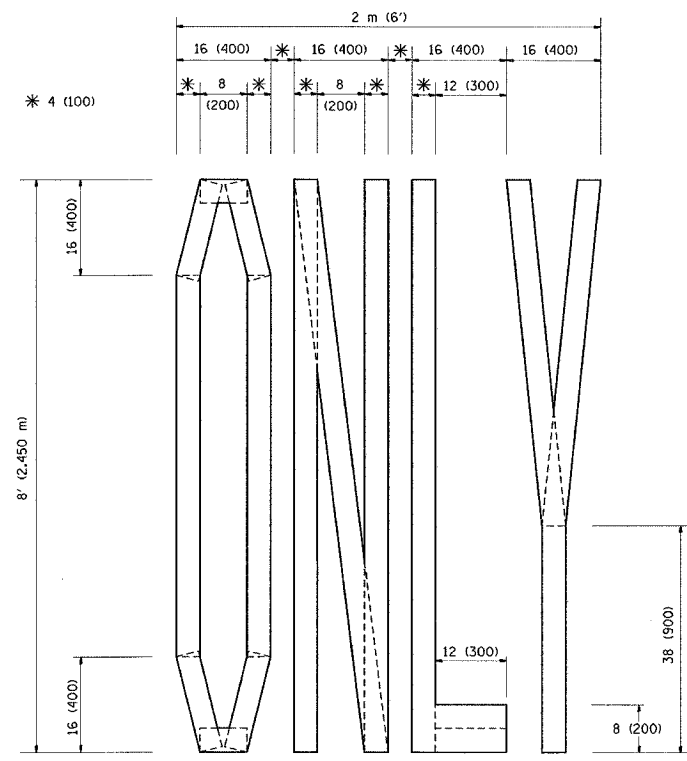
REVISIONS	
NAME	DATE
T. RAMMACHER	09/08/94
A. HOUSEH	11/07/95
A. HOUSEH	10/12/96
T. RAMMACHER	01/06/00

ILLINOIS DEPARTMENT OF TRANSPORTATION
**TRAFFIC CONTROL AND PROTECTION
 AT TURN BAYS
 (TO REMAIN OPEN TO TRAFFIC)**

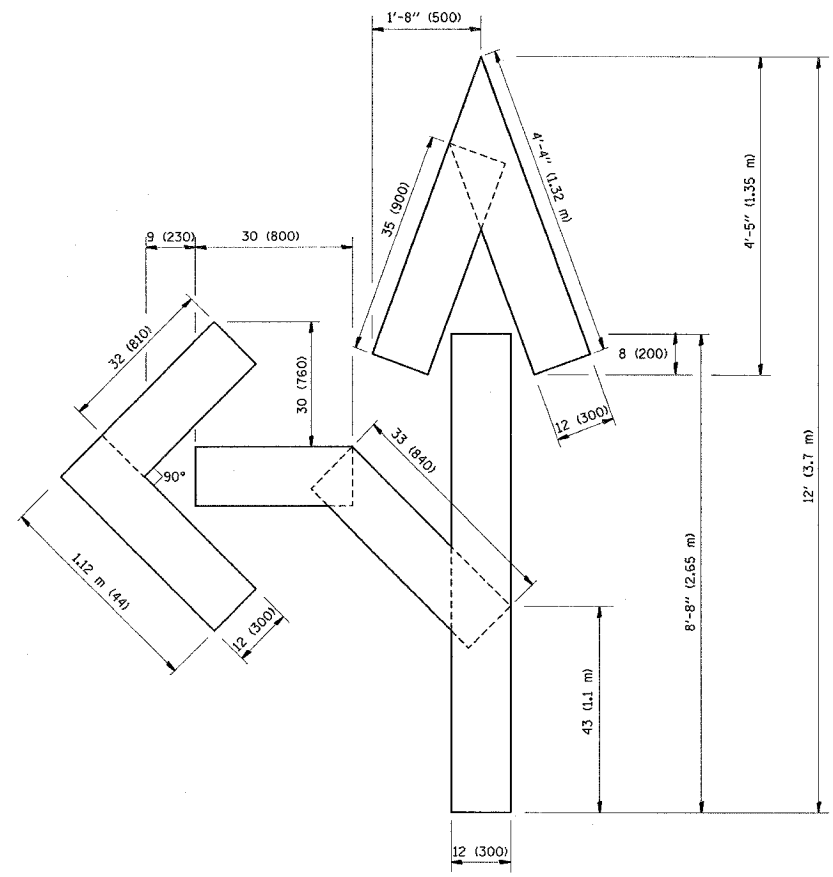
SCALE: NONE
 DRAWN BY
 CHECKED BY LHA
 TC-14

PLOT DATE = 7/23/2007
 FILE NAME = C:\Documents and Settings\prashya\Desktop\EIason Ave. - 62322\vol4.dgn
 USER NAME = prashya

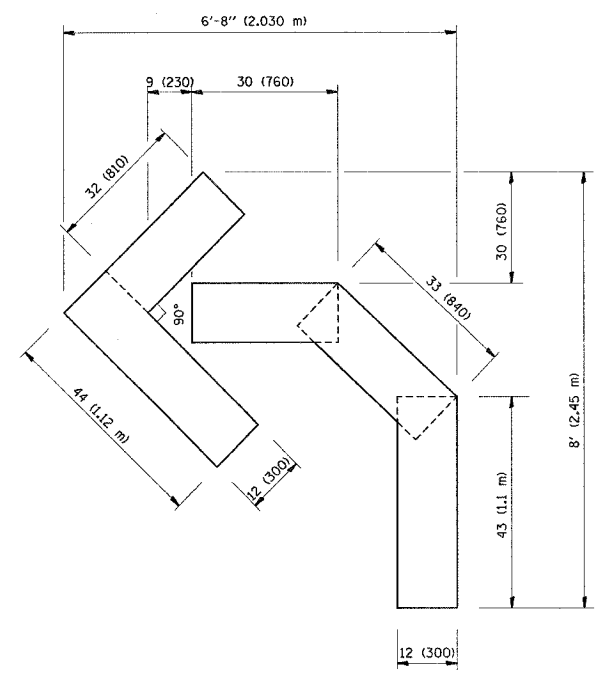
F.A.U. RTE.	SECTION	COUNTY	TOTAL SHEETS	SHEET NO.
3528	2001-143RS	COOK	19	16
STA.		TO STA.		
FED. ROAD DIST. NO.		ILLINOIS FED. AID PROJECT		



QUANTITY
 4 (100) LINE = 64.1 ft. (19.7 m)
 21.1 sq. ft. (1.97 sq. m)



QUANTITY
 4 (100) LINE = 82.5 ft. (25.3 m)
 27.5 sq. ft. (2.53 sq. m)



QUANTITY
 4 (100) LINE = 45.5 ft. (13.9 m)
 15.2 sq. ft. (1.39 sq. m)

All dimensions are in inches (millimeters) unless otherwise shown.

REVISIONS	
NAME	DATE
T. RAMMACHER	09/18/94
J. OBERLE	06/01/96
T. RAMMACHER	06/05/96
T. RAMMACHER	11/04/97
T. RAMMACHER	03/02/98
E. GOMEZ	08/28/00

ILLINOIS DEPARTMENT OF TRANSPORTATION

PAVEMENT MARKING
 LETTERS AND SYMBOLS
 FOR TRAFFIC STAGING

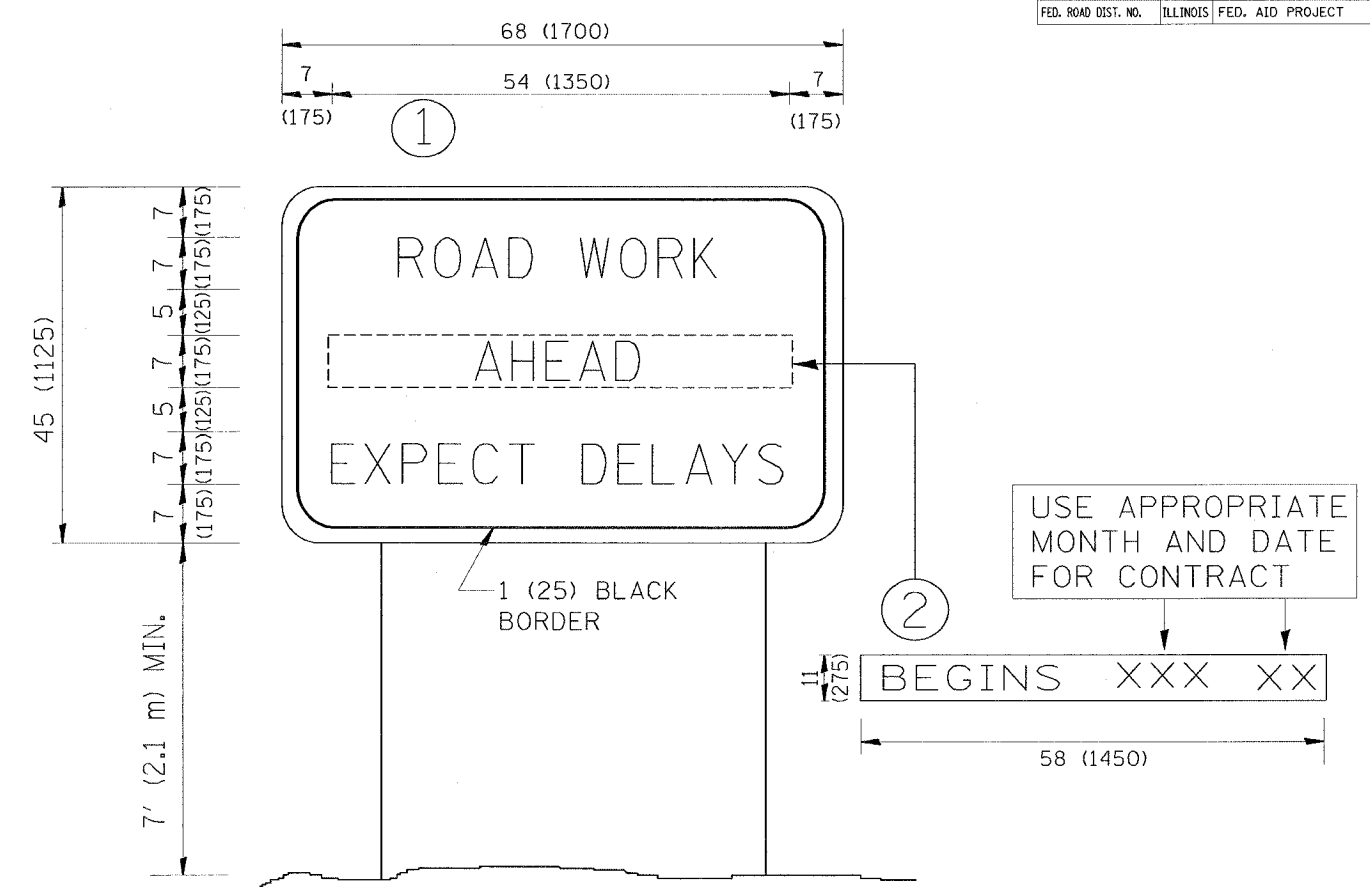
SCALE: NONE

DRAWN BY CADD

CHECKED BY

TC-16

F.A.U. RTE.	SECTION	COUNTY	TOTAL SHEETS	SHEET NO.
3528	2001-143RS	COOK	19	17
STA.		TO STA.		
FED. ROAD DIST. NO.		ILLINOIS FED. AID PROJECT		



NOTES:

1. USE BLACK LETTERING ON ORANGE BACKGROUND.
2. ERECT SIGNS IN ADVANCE OF THE LOCATION FOR THE "ROAD CONSTRUCTION AHEAD" SIGN AT LOCATIONS AS DIRECTED BY THE ENGINEER.
3. ERECT SIGN ① WITH INSTALLED PANEL ② ONE WEEK PRIOR TO THE START OF CONSTRUCTION.
4. REMOVE PANEL ② SOON AFTER THE START OF CONSTRUCTION.
5. SEE SPECIAL PROVISION FOR "TEMPORARY INFORMATION SIGNING" FOR ADDITIONAL INFORMATION.
6. ONE SIGN ASSEMBLY EQUALS 25.70 SQ. FT. (2.3 SQ. M.)
7. SHALL BE PAID FOR AS TEMPORARY INFORMATION SIGNING.

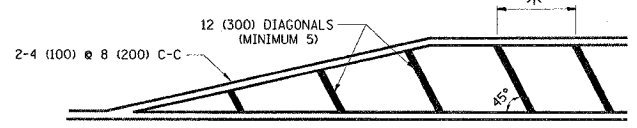
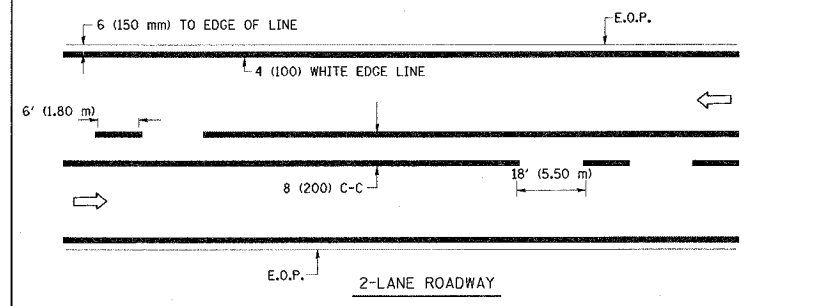
ALL DIMENSIONS ARE IN INCHES (MILLIMETERS) UNLESS OTHERWISE SHOWN.

REVISIONS	
NAME	DATE
R. MIRS	9-15-97
R. MIRS	12-11-97
T. RAMMACHER	2-2-99
C. JUCIUS	1-31-07

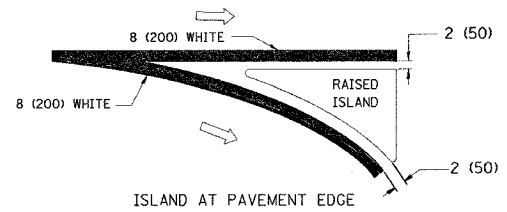
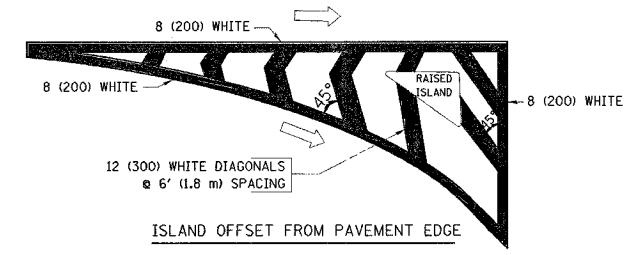
ILLINOIS DEPARTMENT OF TRANSPORTATION
**ARTERIAL ROAD
 INFORMATION SIGN**

SCALE: NONE
 DRAWN BY DESIGN
 CHECKED BY
 TC22

F.A.U. RTE.	SECTION	COUNTY	TOTAL SHEETS	SHEET NO.
3528	2001-143RS	COOK	19	18
STA.		TO STA.		
FED. ROAD DIST. NO.		ILLINOIS FED. AID PROJECT		

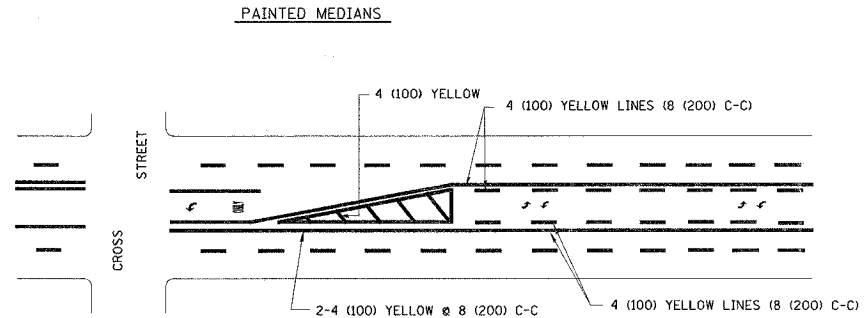
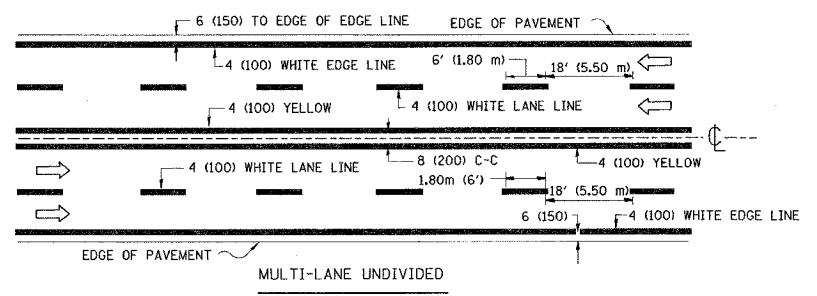


* FOR MEDIAN LENGTHS WHERE DIAGONAL SPACING CANNOT BE ATTAINED, USE 5 (FIVE) EQUALLY SPACED DIAGONAL LINES.
 * DIAGONAL LINE SPACING: 20' (6.1 m) C-C

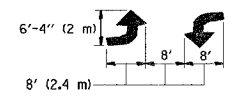


TYPICAL ISLAND MARKING

TYPE OF MARKING	WIDTH OF LINE	PATTERN	COLOR	SPACING / REMARKS
CENTERLINE ON 2 LANE PAVEMENT	4 (100)	SKIP-DASH	YELLOW	6' (1.80 m) LINE WITH 18' (5.50 m) SPACE
CENTERLINE ON MULTI-LANE UNDIVIDED PAVEMENT	2 @ 4 (100)	SOLID	YELLOW	8 (200) C-C
NO PASSING ZONE LINES: FOR ONE DIRECTION FOR BOTH DIRECTIONS	4 (100) 2 @ 4 (100)	SOLID SOLID	YELLOW YELLOW	8 (200) C-C
LANE LINES	4 (100) 5 (125) ON FREEWAYS	SKIP-DASH SKIP-DASH	WHITE WHITE	6' (1.80 m) LINE WITH 18' (5.50 m) SPACE
DOTTED LINES (EXTENSIONS OF CENTER, LANE OR TURN LANE MARKINGS)	SAME AS LINE BEING EXTENDED	SKIP-DASH	SAME AS LINE BEING EXTENDED	2' (600) LINE WITH 6' (1.8) SPACE
EDGE LINES	4 (100)	SOLID	YELLOW-LEFT WHITE-RIGHT	OUTLINE MOUNTABLE MEDIANS IN YELLOW; EDGE LINES ARE NOT USED NEXT TO BARRIER CURB
TURN LANE MARKINGS	6 (150) LINE; FULL SIZE LETTERS & SYMBOLS (8' (2.4 m))	SOLID	WHITE	SEE TYPICAL TURN LANE MARKING DETAIL
TWO WAY LEFT TURN MARKING	2 @ 4 (100) EACH DIRECTION 8' (2.4 m) LEFT ARROW	SKIP-DASH AND SOLID IN PAIRS	YELLOW WHITE	6' (1.8 m) LINE WITH 18' (5.50 m) SPACE FOR SKIP-DASH; 8 (200) C-C BETWEEN SOLID LINE AND SKIP-DASH LINE SEE TYPICAL TWO-WAY LEFT TURN MARKING DETAIL
CROSSWALK LINES (PEDESTRIAN) A. DIAGONALS (BIKE & EQUESTRIAN) B. LONGITUDINAL BARS (SCHOOL)	2 @ 6 (150) 12 (300) @ 45° 8 (200) @ 90°	SOLID SOLID SOLID	WHITE WHITE WHITE	NOT LESS THAN 6' (1.8 m) APART 2' (600) APART 2'-4' (700) APART SEE TYPICAL CROSSWALK MARKING DETAILS.
STOP LINES	24 (600)	SOLID	WHITE	PLACE 4' (1.2 m) IN ADVANCE OF AND PARALLEL TO CROSSWALK, IF PRESENT. OTHERWISE, PLACE AT DESIRED STOPPING POINT. PARALLEL TO CROSSROAD CENTERLINE, WHERE POSSIBLE
PAINTED MEDIANS	2 @ 4 (100) WITH 12 (300) DIAGONALS @ 45°	SOLID	YELLOW: TWO WAY TRAFFIC WHITE: ONE WAY TRAFFIC	8 (200) C-C FOR THE DOUBLE LINE SEE TYPICAL PAINTED MEDIAN MARKING.
GORE MARKING AND CHANNELIZING LINES	8 (200) WITH 12 (300) DIAGONALS @ 45°	SOLID	WHITE	DIAGONALS: 20' (6.1 m) (LESS THAN 30 MPH (50 km/h))
RAILROAD CROSSING	24 (600) TRANSVERSE LINES; "RR" IS 6' (1.8 m) LETTERS; 16 (400) LINE FOR "X"	SOLID	WHITE	SEE STATE STANDARD 780001 AREA OF: "R"=3.6 SQ. FT. (0.33m ²) EACH "X"=54.0 SQ. FT. (5.0 m ²)

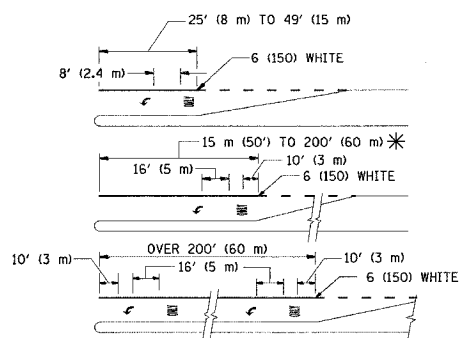
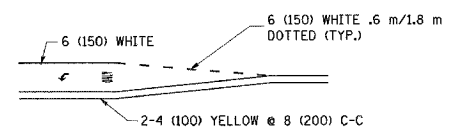
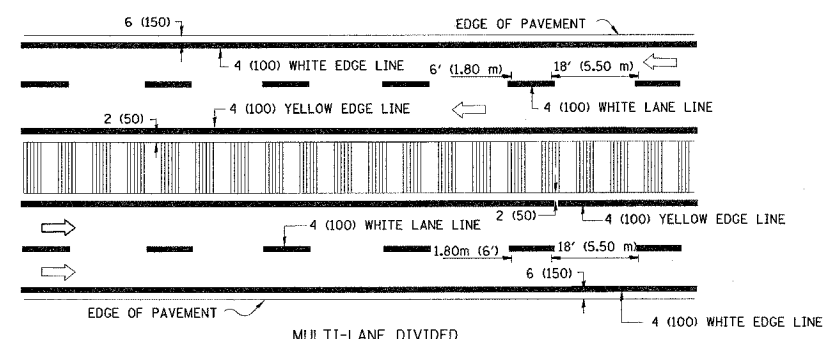


A MINIMUM OF TWO PAIRS OF TURN ARROWS SHALL BE USED, WHITE IN COLOR. ADDITIONAL PAIRS SHALL BE PLACED AT 200' (60 m) TO 300' (90 m) INTERVALS.



MEDIAN WITH TWO-WAY LEFT TURN LANE

TYPICAL PAINTED MEDIAN MARKING



FULL SIZE LETTERS 8' (2.4 m) AND ARROWS SHALL BE USED.
 AREA = 15.8 SQ. FT. (1.47 m²) ONLY AREA = 22.9 SQ. FT. (2.13 m²)

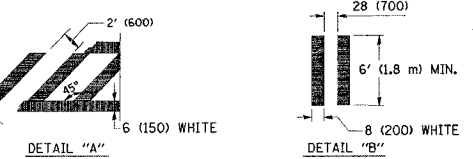
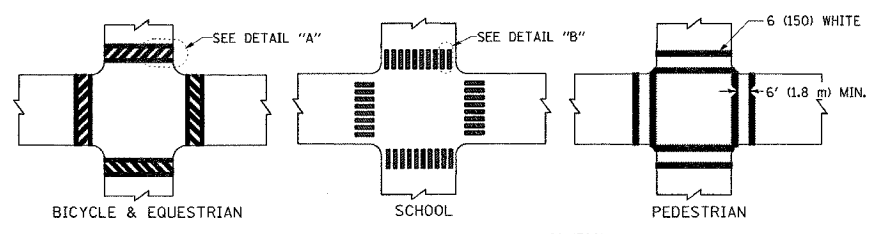
* TURN LANES IN EXCESS OF 400' (120 m) IN LENGTH MAY HAVE AN ADDITIONAL SET OF ARROW - "ONLY" INSTALLED MIDWAY BETWEEN THE OTHER TWO SETS OF ARROW - "ONLY".

TYPICAL LEFT (OR RIGHT) TURN LANE

TYPICAL TURN LANE MARKING

TYPICAL LANE AND EDGE LINE MARKING

NOTE: MEDIANS WITH BARRIER CURB DO NOT REQUIRE AN EDGE LINE



TYPICAL CROSSWALK MARKING

FOR FURTHER DETAILS ON PAVEMENT MARKING REFER TO STREET MARKING STANDARDS, PRINTED BY CITY OF CHICAGO, DEPARTMENT OF TRANSPORTATION, BUREAU OF TRAFFIC.

ALL DIMENSIONS ARE IN INCHES (MILLIMETERS) UNLESS OTHERWISE SHOWN.

REVISIONS	
NAME	DATE
T. RAMMÄCHER	12/07/00

ILLINOIS DEPARTMENT OF TRANSPORTATION
 CITY OF CHICAGO
 TYPICAL PAVEMENT MARKINGS

SCALE: NONE

DRAWN BY CADD
 CHECKED BY

PLOT DATE = 7/23/2007
 FILE NAME = C:\Documents and Settings\qurshuya\Desktop\Elston Ave. - 62322\1024.dgn
 USER NAME = qurshuya

