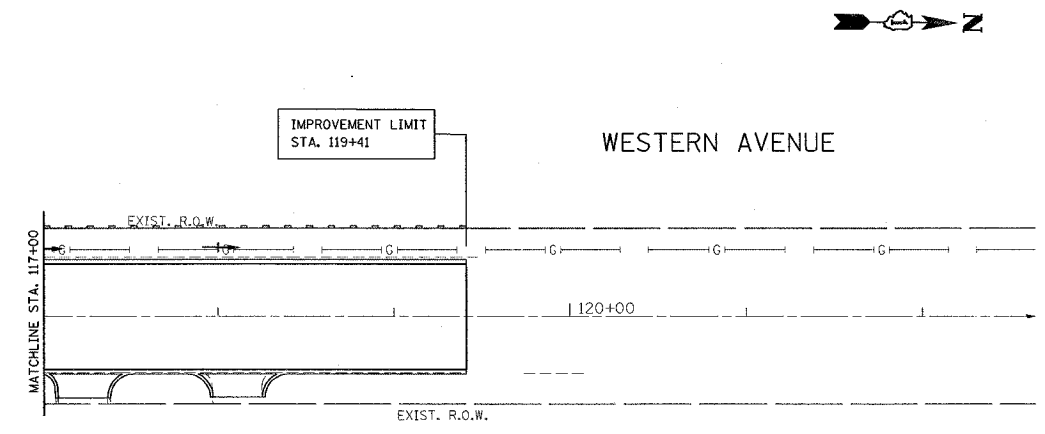
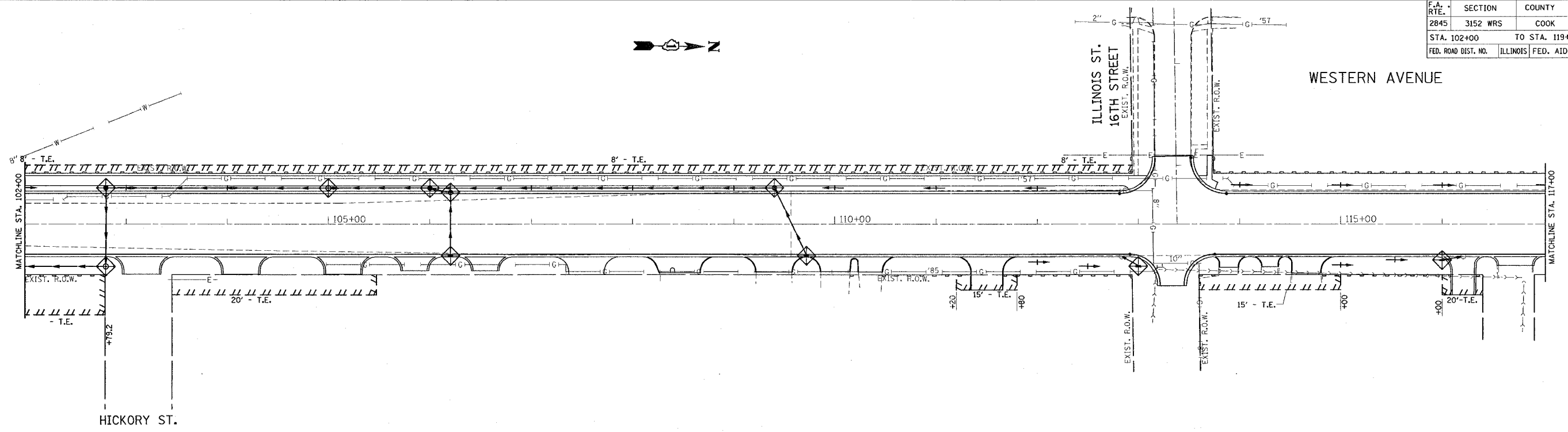


\*REF-er008  
\*REF-er009

CONTRACT NO. 62742

F.A. RTE.	SECTION	COUNTY	TOTAL SHEETS	SHEET NO.
2845	3152 WRS	COOK	195	85
STA. 102+00		TO STA. 119+41		
FED. ROAD DIST. NO.		ILLINOIS FED. AID PROJECT		



**LEGEND FOR EROSION CONTROL NOTES**

- SEDIMENT CONTROL, SILT FENCE
- SWALE
- DITCH
- INLET FILTER

**NOTES:**

1. TEMPORARY EROSION CONTROL SEEDING TO BE PROVIDED AT ALL ERODABLE BARE EARTH AREAS, REFER TO SPECIAL PROVISIONS.
2. NPDES PERMIT IS REQUIRED FOR THE PROJECT.
3. THE CONTRACTORS SHALL PROVIDE & MAINTAIN INLET PROTECTION AT ALL PROPOSED DRAINAGE STRUCTURES AND AT OTHER LOCATIONS DIRECTED BY THE ENGINEER AND/ OR SHOWN IN THE PLANS. INLET PROTECTION SHALL BE PLACED IMMEDIATELY AFTER THE AREA INVOLVED HAS BEEN DISTURBED.
4. ALL EROSION CONTROL MEASURES SHALL BE IN ACCORDANCE WITH THE REQUIREMENTS TO THE STANDARD SPECIFICATION AND THE APPLICABLE STATE STANDARDS FOR THE ENTIRE DURATION OF THE CONTRACT OR UNTIL SUCH A TIME AS DIRECTED BY THE ENGINEER.
5. AT ANY AREA WHERE THERE IS NO PROPOSED GRADING, THE EXISTING GROUND COVER SHALL REMAIN.
6. EROSION CONTROL ITEMS ARE CONSIDERED TO BE HIGH PRIORITY ITEMS ON THIS CONTRACT, THE ENGINEER WILL IMPLEMENT ALL PROVISIONS OF THE SPECIFICATION NECESSARY TO ASSURE THAT EROSION CONTROL ITEMS ARE CONSTRUCTED AND MAINTAINED IN A TIMELY WAY, ALL EROSION CONTROL MEASURES SHALL BE INSTALLED PRIOR TO BEGINNING ANY CONSTRUCTION ACTIVITIES WHICH WILL POTENTIALLY CREATE ERODABLE CONDITIONS.
7. THE EROSION CONTROL MEASURES SHOWN ARE BUT A GRAPHICAL REPRESENTATION OF SUGGESTED MEASURES. DEVIATIONS FROM THIS PLAN ARE TO BE EXPECTED PENDING A JOBSITE INSPECTION BETWEEN THE CONTRACTOR AND THE DEPARTMENT.
8. THE CONTRACTORS WILL BE REQUIRED TO IMPLEMENT AND MAINTAIN SEDIMENT CONTROL MEASURES PRIOR TO STRIPPING EXISTING VEGETATION.
9. NO SLOPE SHALL BE LEFT UNDISTURBED FOR MORE THAN 14 DAYS WITHOUT THE PLACEMENT OF TEMPORARY OR PERMANENT SEEDING.

PLOT DATE = 6/28/2007  
 FILE NAME = n:\projects\114469\veh\_ero.dgn  
 PLOT SCALE = 80.00000 / IN.  
 REFERENCE = #REF#

REVISIONS	
NAME	DATE

ILLINOIS DEPARTMENT OF TRANSPORTATION

**WESTERN AVENUE  
PROPOSED EROSION CONTROL  
PLAN**

SCALE: VERT. 1"=50'  
HORIZ. 1"=50'

DATE 6/28/2007

DRAWN BY  
CHECKED BY