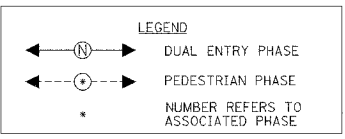
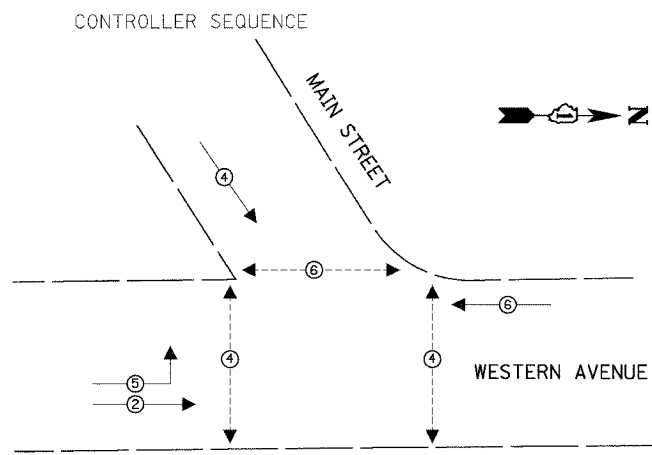
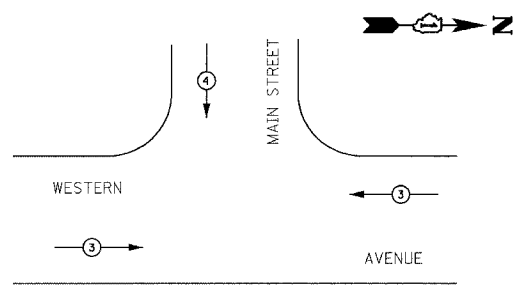


F.A.I. RTE.	SECTION	COUNTY	TOTAL SHEETS	SHEET NO.
2845	3152WRS	COOK	195	94
STA.	TO STA.			
FED. ROAD DIST. NO.	ILLINOIS	FED. AID PROJECT		
		CONTRACT NO.	62742	



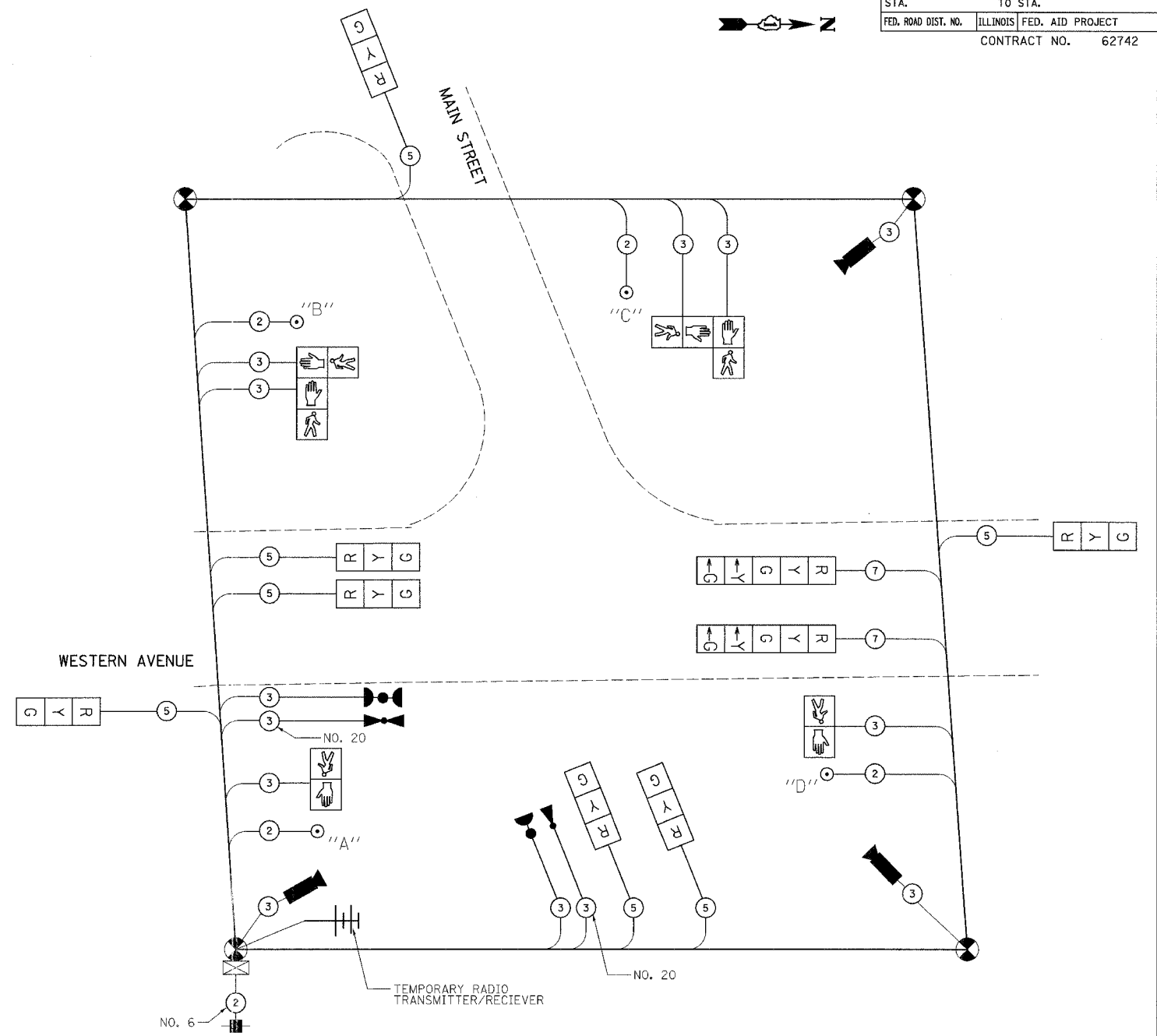
PHASE DESIGNATION DIAGRAM



EMERGENCY VEHICLE PREEMPTOR	3	4
MOVEMENT	←	↓

TEMPORARY CABLE DIAGRAM LEGEND

- TEMPORARY TRAFFIC SIGNAL SECTION OR PEDESTRIAN SIGNAL SECTION 12" (300 mm)
- TEMPORARY CONTROLLER CABINET
- TEMPORARY SERVICE INSTALLATION
- INDICATES NUMBER OF CONDUCTORS IN CABLE. ALL CONDUCTORS TO BE NUMBER 14 AWG WIRE UNLESS OTHERWISE NOTED.
- EMERGENCY VEHICLE LIGHT DETECTOR
- CONFIRMATION BEACON
- PEDESTRIAN PUSH-BUTTON DETECTOR
- VEHICLE DETECTOR, INDUCTION LOOP
- 12" (300mm) PEDESTRIAN SIGNAL SECTION
- VIDEO VEHICLE SENSOR
- RADIO ANTENNA (TRANSMITTER/RECEIVER)
- TEMPORARY WOOD POLE



TEMPORARY CABLE PLAN

- NOTES:
- PUSH-BUTTON "A" SHALL PLACE B CALL TO PHASES 4 AND 6.
 - PUSH-BUTTON "B" SHALL PLACE C CALL TO PHASES 4 AND 6.

- NOTES:
- CABLES FOR VIDEO DETECTION AND RADIO ANTENNAS SHALL BE IN ACCORDANCE WITH THE REQUIREMENTS OF THE MANUFACTURERS OF THE EQUIPMENT.
 - THE TRAFFIC SIGNAL CONTROL EQUIPMENT FOR THIS PROJECT SHALL BE "ECONOLITE".

NAME	DATE

ILLINOIS DEPARTMENT OF TRANSPORTATION

TEMPORARY CABLE PLAN AND PHASE DESIGNATION DIAGRAM

WESTERN AVENUE AT MAIN STREET

SCALE: VERT. NONE
 HORIZ. 1" = 40'
 DATE 5/17/2007

DRAWN BY JLA
 DESIGNED BY KK/BPT
 CHECKED BY JTL/BPT

TYPE	NO. LAMPS	WATTAGE INCAND.	WATTAGE LED	%OPERATION	TOTAL WATTAGE
SIGNAL (RED)	9	135	17	0.50	76.5
(YELLOW)	9	135	25	0.25	56.3
(GREEN)	9	135	15	0.25	33.8
ARROW	4	135	12	0.10	4.8
PED. SIGNAL	6	90	25	1.00	150
CONTROLLER	1	100	100	1.00	100
ILLUM. SIGN		84		0.05	
FLASHER				0.50	
TOTAL =					421.4

FOUNDATION (DEPTH)	FT. (m)	CABLE SLACK	FT. (m)	VERTICAL	FT. (m)
TYPE A - POST	4 (1.2)	HANDHOLE	6.5 (2.0)	ALL FOUNDATIONS	3.0 (1.0)
D - CONTROLLER	4 (1.2)	DOUBLE HANDHOLE	13 (4.0)	MAST ARM (L) POLE	20.0 (6.0)
E - M. ARM POLE	4 (1.2)	SIGNAL POST	0 (0.0)	BRACKET MOUNTED	13 (4.0)
24" (600mm)	10 (3.0)	CONTROLLER CAB.	0 (0.0)	PED. PUSH-BUTTON	6 (2.0)
30" (750mm)	15 (4.6)	FIBER OPTIC	13 (4.0)	ELECTRIC SERVICE	13.5 (4.1)
		ELECTRIC SERVICE	1 (0.5)	SERVICE TO GROUND	13.5 (4.1)
		GROUND CABLE	1 (0.5)	POST MOUNTED	13 (4.0)

ENERGY COSTS TO: 1/3 TO IDOT TOTAL = 421.4

2/3 TO VILLAGE OF PARK FOREST
 330 VICTORY DRIVE
 PARK FOREST, ILLINOIS 60466
 CONTACT: Jim Werner
 PHONE: (708) 235-2694
 COMPANY: Commonwealth Edison