

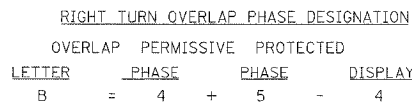
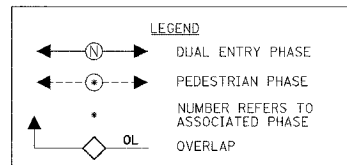
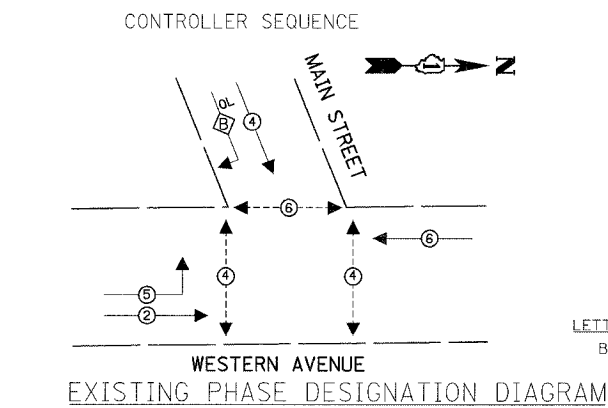
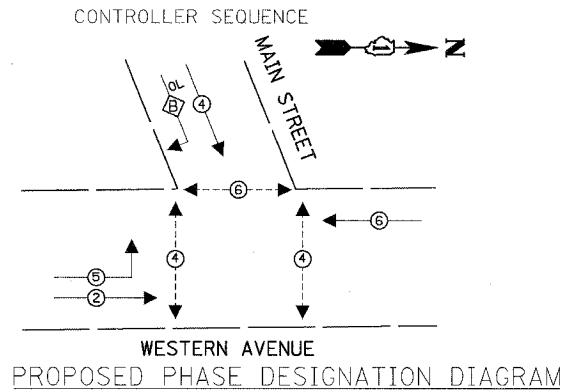
PREPARED BY:
CEMCON, Ltd.
 Consulting Engineers, Land Surveyors & Planners
 2800 White Oak Circle, Suite 100
 Naperville, IL 60563-2000
 Phone: 630-682-2100
 Fax: 630-682-2100
 E-Mail: ccm@cemcon.com Website: www.cemcon.com

CABLE PLAN LEGEND

EXISTING	PROPOSED	DESCRIPTION
		8" (200mm) TRAFFIC SIGNAL SECTION
		12" (300mm) TRAFFIC SIGNAL SECTION
		12" (300mm) PEDESTRIAN SIGNAL SECTION
		12" (300mm) PEDESTRIAN SIGNAL SECTION
		CONTROLLER CABINET
		SERVICE INSTALLATION
		TELEPHONE CONNECTION
		MAGNETIC DETECTOR
		EMERGENCY VEHICLE LIGHT DETECTOR
		CONFIRMATION BEACON
		PUSH-BUTTON DETECTOR
		VEHICLE DETECTOR, INDUCTION LOOP
		DENOTES NUMBER OF CONDUCTORS, ALL CABLE NO. 14 EXCEPT AS INDICATED. ALL LOOP DETECTOR CABLE TO BE SHIELDED.
		GROUND CABLE IN CONDUIT NO. 6 SOLID COPPER (GREEN)
		FIBER OPTIC CABLE IN CONDUIT NO. 62.5/125 2-MM12F SM12F
		SIGNAL FACE WITH BACKPLATE, "P" INDICATES PROGRAMMED HEAD
		RAILROAD CONTROL CABINET
		ILLUMINATED SIGN "NO LEFT TURN"
		ILLUMINATED SIGN "NO RIGHT TURN"
		GROUND ROD AT HANDHOLE (H), DOUBLE HANDHOLE (HH), OR CONTROLLER (C)
		GROUND ROD AT POST (P), OR MAST ARM POLE (MA)
		GROUND ROD AT ELECTRIC SERVICE INSTALLATION

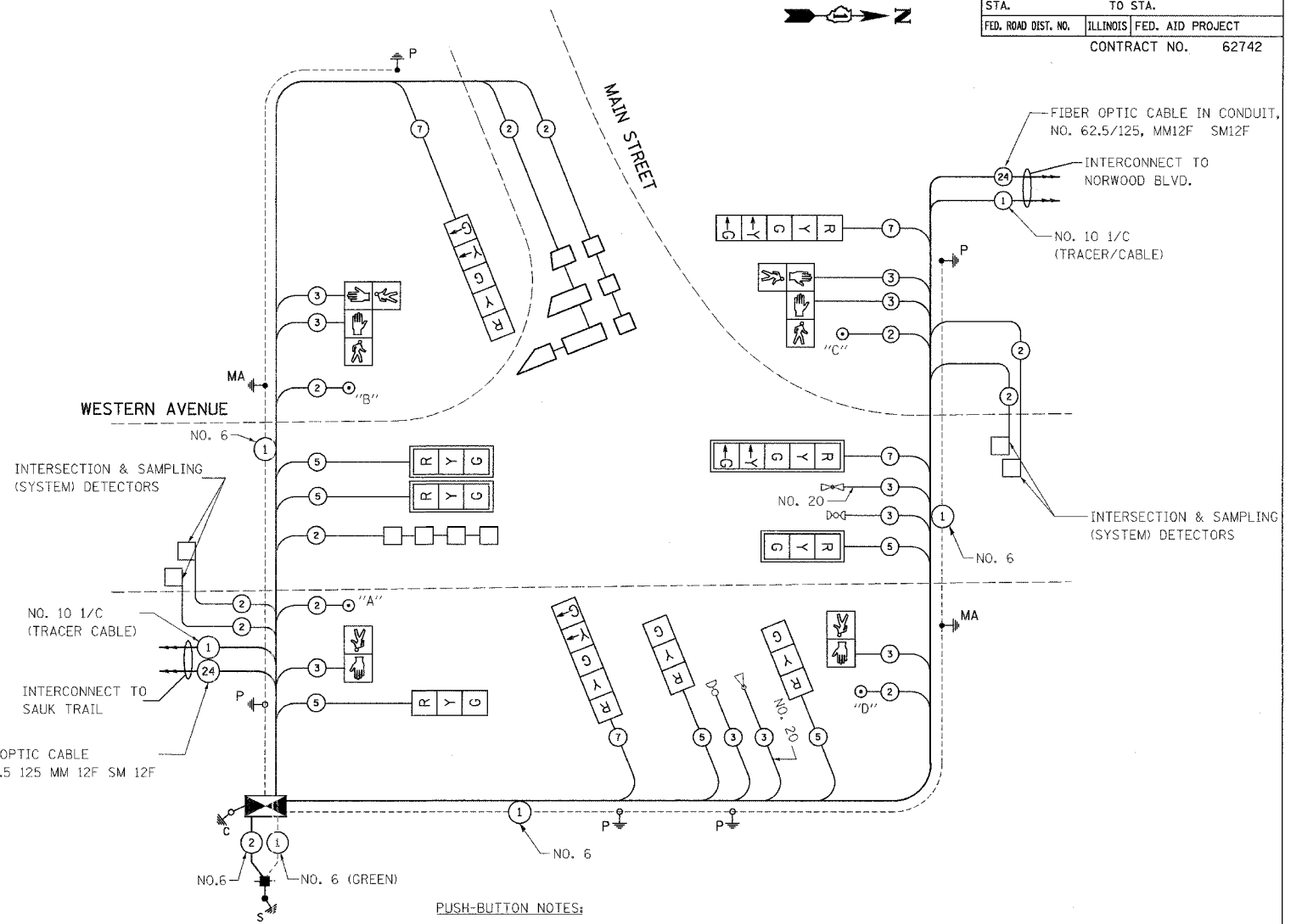
SCHEDULE OF QUANTITIES

ITEM	UNIT	QUANTITY
RELOCATE SIGN PANEL, TYPE 1	SO FT	18
RELOCATE SIGN PANEL, TYPE 2	SO FT	25
CONDUIT IN TRENCH, 2" DIA., GALVANIZED STEEL	FOOT	268
CONDUIT IN TRENCH, 2 1/2" DIA., GALVANIZED STEEL	FOOT	96
CONDUIT IN TRENCH, 3" DIA., GALVANIZED STEEL	FOOT	48
CONDUIT PUSHED, 4" DIA., GALVANIZED STEEL	FOOT	188
HANDHOLE	EACH	3
TRENCH AND BACKFILL FOR ELECTRICAL WORK	FOOT	449
FULL-ACTUATED CONTROLLER AND TYPE IV CABINET (SPECIAL) TRANSCEIVER - FIBER OPTIC	EACH	1
ELECTRIC CABLE IN CONDUIT, SIGNAL NO. 14 2C	FOOT	690
ELECTRIC CABLE IN CONDUIT, SIGNAL NO. 14 3C	FOOT	1449
ELECTRIC CABLE IN CONDUIT, SIGNAL NO. 14 5C	FOOT	782
ELECTRIC CABLE IN CONDUIT, SIGNAL NO. 14 7C	FOOT	725
ELECTRIC CABLE IN CONDUIT, LEAD-IN, NO. 14 1 PAIR	FOOT	1486
ELECTRIC CABLE IN CONDUIT, SERVICE, NO. 6 2C	FOOT	18
TRAFFIC SIGNAL POST, GALVANIZED STEEL 10 FT.	EACH	1
TRAFFIC SIGNAL POST, GALVANIZED STEEL 16 FT.	EACH	2
CONCRETE FOUNDATION, TYPE A	FOOT	8
CONCRETE FOUNDATION, TYPE E 36-INCH DIAMETER	FOOT	30
DRILL EXISTING HANDHOLE	EACH	2
SIGNAL HEAD, LED, 1-FACE, 3-SECTION, MAST-ARM MOUNTED	EACH	3
SIGNAL HEAD, LED, 1-FACE, 3-SECTION, BRACKET MOUNTED	EACH	3
SIGNAL HEAD, LED, 1-FACE, 5-SECTION, BRACKET MOUNTED	EACH	3
SIGNAL HEAD, LED, 1-FACE, 5-SECTION, MAST-ARM MOUNTED	EACH	1
PEDESTRIAN SIGNAL HEAD, LED, 1-FACE, BRACKET MOUNTED	EACH	2
PEDESTRIAN SIGNAL HEAD, LED, 2-FACE, BRACKET MOUNTED	EACH	2
TRAFFIC SIGNAL BACKPLATE, LOUVERED, ALUMINUM	EACH	4
INDUCTIVE LOOP DETECTOR	EACH	7
DETECTOR LOOP, TYPE I	FOOT	538
PEDESTRIAN PUSH-BUTTON	EACH	4
TEMPORARY TRAFFIC SIGNAL INSTALLATION	EACH	1
RELOCATE EXISTING MAST ARM ASSEMBLY AND POLE	EACH	2
REMOVE ELECTRIC CABLE FROM CONDUIT	FOOT	4200
REMOVE EXISTING TRAFFIC SIGNAL EQUIPMENT	EACH	1
REMOVE EXISTING CONCRETE FOUNDATION	EACH	4
SERVICE INSTALLATION, GROUND MOUNTED	EACH	1
ELECTRIC CABLE IN CONDUIT, GROUNDING, NO. 6, 1C	FOOT	402
RELOCATE LIGHT DETECTOR	EACH	2
ELECTRIC CABLE IN CONDUIT, NO. 20 3/C, TWISTED & SHIELDED	FOOT	297
UNINTERRUPTIBLE POWER SUPPLY	EACH	1



PROPOSED EMERGENCY VEHICLE PREEMPTOR

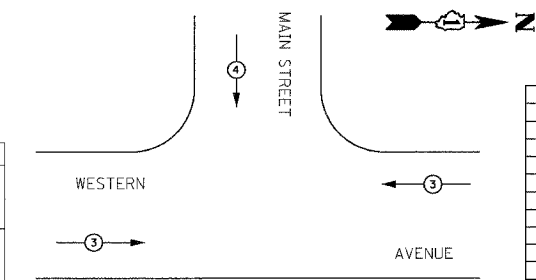
EMERGENCY VEHICLE PREEMPTOR	3	4
MOVEMENT	→	↓



- PUSH-BUTTON NOTES:**
1. PUSH-BUTTON "B" SHALL PLACE A CALL TO PHASES 4 AND 6.
 2. PUSH-BUTTON "C" SHALL PLACE A CALL TO PHASES 4 AND 6.

CABLE PLAN

EMERGENCY VEHICLE PREEMPTION SEQUENCE



NOTE:
 THE TRAFFIC SIGNAL CONTROL EQUIPMENT FOR THIS PROJECT SHALL BE "ECONOLITE".

I.D.O.T. TRAFFIC SIGNAL INSTALLATION ELECTRICAL SERVICE REQUIREMENTS

TYPE	NO. LAMPS	WATTAGE (INCAND.)	LED	%OPERATION	TOTAL WATTAGE
SIGNAL (RED)	10	135	17	0.50	85
(YELLOW)	10	135	25	0.25	62.5
(GREEN)	10	135	15	0.25	37.5
ARROW	8	135	12	0.10	9.6
PED. SIGNAL	6	90	25	1.00	150
CONTROLLER	1	100	100	1.00	100
ILLUM. SIGN		84		0.05	
FLASHER				0.50	
TOTAL =					444.6

ENERGY COSTS TO: 1/3 TO IDOT
 2/3 TO VILLAGE OF PARK FOREST
 330 VICTORY DRIVE
 PARK FOREST, ILLINOIS 60466

ENERGY SUPPLY CONTACT: Jim Werner
 PHONE: (708) 235-2694
 COMPANY: Commonwealth Edison

FOUNDATION (DEPTH)	FT. (m)	CABLE SLACK	FT. (m)	VERTICAL	FT. (m)
TYPE A - POST	4 (1.2)	HANDHOLE	6.5 (2.0)	ALL FOUNDATIONS	3.0 (1.0)
D - CONTROLLER	4 (1.2)	DOUBLE HANDHOLE	13 (4.0)	MAST ARM (L) POLE	20.0 (6.0)
E - M. ARM POLE		SIGNAL POST	0 (0.0)	BRACKET MOUNTED	13 (4.0)
24" (600mm)	10 (3.0)	CONTROLLER CAB.	0 (0.0)	PED. PUSH-BUTTON	6 (2.0)
30" (750mm)	15 (4.6)	FIBER OPTIC	13 (4.0)	ELECTRIC SERVICE	13.5 (4.1)
		ELECTRIC SERVICE	1 (0.5)	SERVICE TO GROUND	13.5 (4.1)
		GROUND CABLE	1 (0.5)	POST MOUNTED	13 (4.0)

REVISIONS	
NAME	DATE

ILLINOIS DEPARTMENT OF TRANSPORTATION
CABLE PLAN, PHASE DESIGNATION DIAGRAM AND SCHEDULE OF QUANTITIES
WESTERN AVENUE AT MAIN STREET

SCALE: VERT. NONE
 HORIZ. NONE
 DATE 5/17/2007

DRAWN BY JLA
 DESIGNED BY KK/BPT
 CHECKED BY JTL/BPT

PLOT DATE = 5/19/2007
 PLOT SCALE = 1"=20'
 USER NAME = JLA