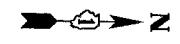


PREPARED BY:  
**CEMCON, LIA**  
 Consulting Engineers, Land Surveyors & Planners  
 2280 White Oak Circle, Suite 100  
 Aurora, IL 60018-6677  
 P: 630-582-9199  
 F: 630-582-9199  
 E: M-LIA@CEMCON.COM Website: WWW.CEMCON.COM

F.A.U. RTE.	SECTION	COUNTY	TOTAL SHEETS	SHEET NO.
2845	3152WRS	COOK	195	109
STA.	TO STA.			
FED. ROAD DIST. NO.	ILLINOIS	FED. AID PROJECT		
CONTRACT NO.			62742	

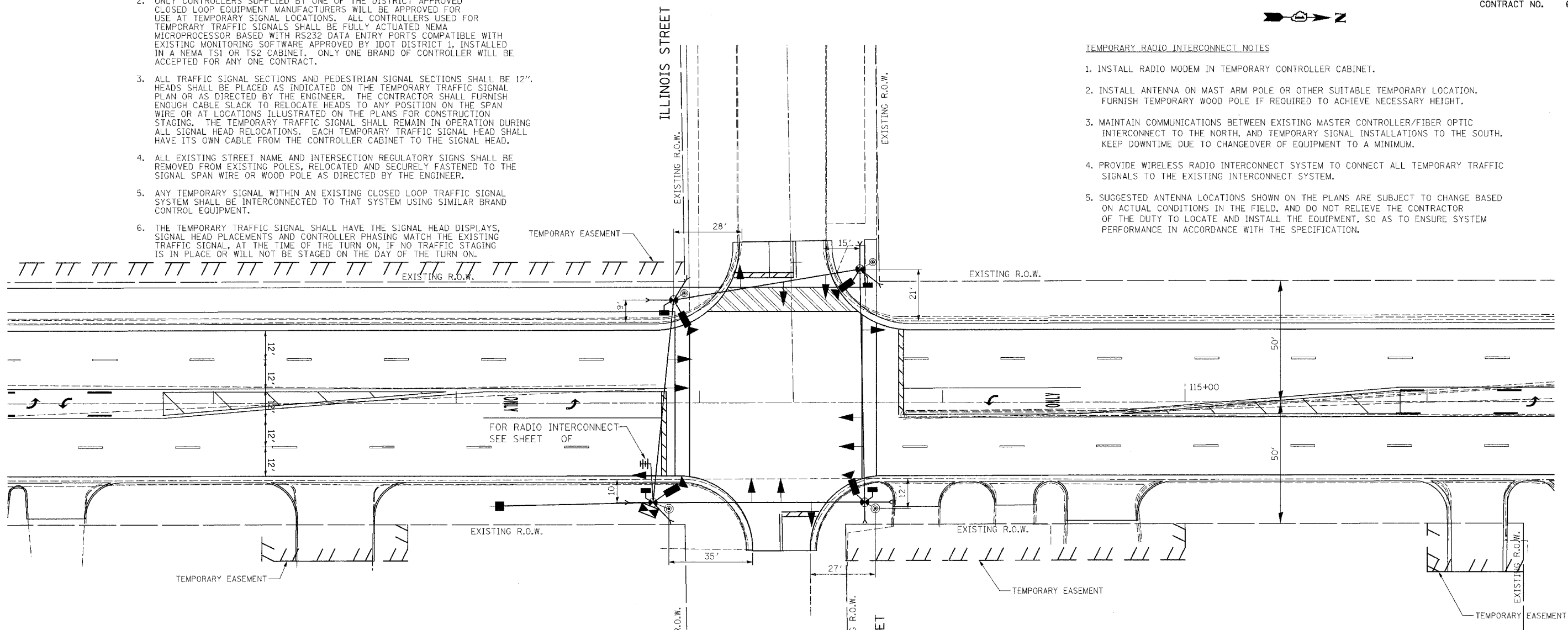
**NOTES FOR TEMPORARY TRAFFIC SIGNALS**

1. ALL CONTROL EQUIPMENT INCLUDING EMERGENCY PRE-EMPTION AND COMMUNICATION DEVICES FOR THE TEMPORARY TRAFFIC SIGNAL(S) SHALL BE FURNISHED BY THE CONTRACTOR.
2. ONLY CONTROLLERS SUPPLIED BY ONE OF THE DISTRICT APPROVED CLOSED LOOP EQUIPMENT MANUFACTURERS WILL BE APPROVED FOR USE AT TEMPORARY SIGNAL LOCATIONS. ALL CONTROLLERS USED FOR TEMPORARY TRAFFIC SIGNALS SHALL BE FULLY ACTUATED NEMA MICROPROCESSOR BASED WITH RS232 DATA ENTRY PORTS COMPATIBLE WITH EXISTING MONITORING SOFTWARE APPROVED BY IDOT DISTRICT 1, INSTALLED IN A NEMA TS1 OR TS2 CABINET. ONLY ONE BRAND OF CONTROLLER WILL BE ACCEPTED FOR ANY ONE CONTRACT.
3. ALL TRAFFIC SIGNAL SECTIONS AND PEDESTRIAN SIGNAL SECTIONS SHALL BE 12". HEADS SHALL BE PLACED AS INDICATED ON THE TEMPORARY TRAFFIC SIGNAL PLAN OR AS DIRECTED BY THE ENGINEER. THE CONTRACTOR SHALL FURNISH ENOUGH CABLE SLACK TO RELOCATE HEADS TO ANY POSITION ON THE SPAN WIRE OR AT LOCATIONS ILLUSTRATED ON THE PLANS FOR CONSTRUCTION STAGING. THE TEMPORARY TRAFFIC SIGNAL SHALL REMAIN IN OPERATION DURING ALL SIGNAL HEAD RELOCATIONS. EACH TEMPORARY TRAFFIC SIGNAL HEAD SHALL HAVE ITS OWN CABLE FROM THE CONTROLLER CABINET TO THE SIGNAL HEAD.
4. ALL EXISTING STREET NAME AND INTERSECTION REGULATORY SIGNS SHALL BE REMOVED FROM EXISTING POLES, RELOCATED AND SECURELY FASTENED TO THE SIGNAL SPAN WIRE OR WOOD POLE AS DIRECTED BY THE ENGINEER.
5. ANY TEMPORARY SIGNAL WITHIN AN EXISTING CLOSED LOOP TRAFFIC SIGNAL SYSTEM SHALL BE INTERCONNECTED TO THAT SYSTEM USING SIMILAR BRAND CONTROL EQUIPMENT.
6. THE TEMPORARY TRAFFIC SIGNAL SHALL HAVE THE SIGNAL HEAD DISPLAYS, SIGNAL HEAD PLACEMENTS AND CONTROLLER PHASING MATCH THE EXISTING TRAFFIC SIGNAL, AT THE TIME OF THE TURN ON, IF NO TRAFFIC STAGING IS IN PLACE OR WILL NOT BE STAGED ON THE DAY OF THE TURN ON.



**TEMPORARY RADIO INTERCONNECT NOTES**

1. INSTALL RADIO MODEM IN TEMPORARY CONTROLLER CABINET.
2. INSTALL ANTENNA ON MAST ARM POLE OR OTHER SUITABLE TEMPORARY LOCATION. FURNISH TEMPORARY WOOD POLE IF REQUIRED TO ACHIEVE NECESSARY HEIGHT.
3. MAINTAIN COMMUNICATIONS BETWEEN EXISTING MASTER CONTROLLER/FIBER OPTIC INTERCONNECT TO THE NORTH, AND TEMPORARY SIGNAL INSTALLATIONS TO THE SOUTH. KEEP DOWNTIME DUE TO CHANGEOVER OF EQUIPMENT TO A MINIMUM.
4. PROVIDE WIRELESS RADIO INTERCONNECT SYSTEM TO CONNECT ALL TEMPORARY TRAFFIC SIGNALS TO THE EXISTING INTERCONNECT SYSTEM.
5. SUGGESTED ANTENNA LOCATIONS SHOWN ON THE PLANS ARE SUBJECT TO CHANGE BASED ON ACTUAL CONDITIONS IN THE FIELD, AND DO NOT RELIEVE THE CONTRACTOR OF THE DUTY TO LOCATE AND INSTALL THE EQUIPMENT, SO AS TO ENSURE SYSTEM PERFORMANCE IN ACCORDANCE WITH THE SPECIFICATION.



**TEMPORARY TRAFFIC SIGNAL LEGEND**

- |   |   |    |  |
|---|---|----|--|
| ▶ | TEMPORARY TRAFFIC SIGNAL HEAD<br>SPAN WIRE MOUNTED ORIGINAL LOCATION  | ▲  | EMERGENCY VEHICLE LIGHT DETECTOR         |
| ◀ | TEMPORARY TRAFFIC SIGNAL HEAD<br>SPAN WIRE MOUNTED SECONDARY LOCATION | ●  | CONFIRMATION BEACON                      |
| ⊙ | TEMPORARY WOOD POLE (CLASS 5 OR BETTER)<br>45 FOOT (13.7m) MINIMUM    | □  | VEHICLE DETECTOR, INDUCTION LOOP         |
| ⊠ | TEMPORARY CONTROLLER CABINET  | UD | UNIT DUCT                                |
| — | TEMPORARY SPAN WIRE, TETHER WIRE, AND CABLE                           | —  | G.S. CONDUIT IN TRENCH (T) OR PUSHED (P) |
| ■ | TEMPORARY SERVICE INSTALLATION  | ■  | HANDHOLE                                 |
| ■ | TEMPORARY PEDESTRIAN SIGNAL HEAD, BRACKET MOUNTED                     | ■  | HEAVY DUTY HANDHOLE                      |
| ▶ | VIDEO VEHICLE SENSOR  | CT | COMMON TRENCH                            |
| ⊙ | PEDESTRIAN PUSH-BUTTON DETECTOR                                       | —  | RADIO ANTENNA (TRANSMITTER/RECEIVER)     |

- NOTES:**
1. THE TRAFFIC SIGNAL CONTROL EQUIPMENT FOR THIS PROJECT SHALL BE "ECONOLITE".
  2. ALL TRAFFIC SIGNAL HEADS SHALL BE L.E.D. (LIGHT EMITTING DIODE)

**RESTORATION OF WORK AREA**

RESTORATION OF TRAFFIC SIGNAL WORK AREA SHALL BE INCIDENTAL TO THE RELATED PAY ITEM SUCH AS FOUNDATION, CONDUIT, HANDHOLE, TRENCH AND BACKFILL, ETC., AND NO EXTRA COMPENSATION SHALL BE ALLOWED. ALL ROADWAY SURFACES SUCH AS SHOULDERS, MEDIANS, SIDEWALKS, PAVEMENT, ETC. SHALL BE REPLACED IN KIND. ALL DAMAGE TO MOWED LAWNS SHALL BE REPLACED WITH AN APPROVED SOD, AND ALL DAMAGE TO UNMOWED FIELDS SHALL BE SEEDING IN ACCORDANCE WITH STANDARD SPECIFICATIONS 252 AND 250 RESPECTIVELY.

**FOR UNDERGROUND UTILITY LOCATIONS, CALL J.U.L.I.E. TOLL FREE TEL. 1-800-892-0123**

REVISIONS	
NAME	DATE

ILLINOIS DEPARTMENT OF TRANSPORTATION

**TEMPORARY TRAFFIC SIGNAL INSTALLATION**  
 WESTERN AVE. AT ILLINOIS ST./16TH ST.

SCALE: VERT. 1" = 20'  
 HORIZ. 1" = 20'  
 DATE 5/17/2007

DRAWN BY JLA  
 DESIGNED BY KK/BPT  
 CHECKED BY JTL/BPT

PLOT DATE = 5/19/2007  
 FILE NAME = J:\projects\320206\A\sign\16th\16th.dgn  
 USER NAME = JLA