

PREPARED BY:
CEMCON, L.L.C.
 Consulting Engineers, Land Surveyors & Planners
 2880 White Oak Circle, Suite 100
 Huntley, Illinois 60149
 Phone: 815.350.8500
 Fax: 815.350.8501
 E-Mail: info@cemcon.com Website: www.cemcon.com

CABLE PLAN LEGEND

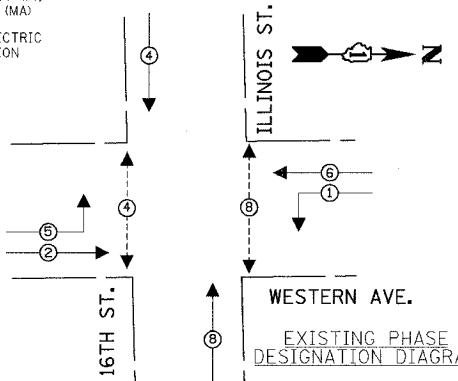
EXISTING	PROPOSED	DESCRIPTION
[Symbol]	[Symbol]	8" (200mm) TRAFFIC SIGNAL SECTION
[Symbol]	[Symbol]	12" (300mm) TRAFFIC SIGNAL SECTION
[Symbol]	[Symbol]	12" (300mm) PEDESTRIAN SIGNAL SECTION
[Symbol]	[Symbol]	12" (300mm) PEDESTRIAN SIGNAL SECTION
[Symbol]	[Symbol]	CONTROLLER CABINET
[Symbol]	[Symbol]	SERVICE INSTALLATION
[Symbol]	[Symbol]	TELEPHONE CONNECTION
[Symbol]	[Symbol]	MAGNETIC DETECTOR
[Symbol]	[Symbol]	EMERGENCY VEHICLE LIGHT DETECTOR
[Symbol]	[Symbol]	CONFIRMATION BEACON
[Symbol]	[Symbol]	PUSH-BUTTON DETECTOR
[Symbol]	[Symbol]	VEHICLE DETECTOR, INDUCTION LOOP
[Symbol]	[Symbol]	DENOTES NUMBER OF CONDUCTORS, ALL CABLE NO. 14 EXCEPT AS INDICATED. ALL LOOP DETECTOR CABLE TO BE SHIELDED.
[Symbol]	[Symbol]	GROUND CABLE IN CONDUIT NO. 6 SOLID COPPER (GREEN)
[Symbol]	[Symbol]	FIBER OPTIC CABLE IN CONDUIT NO. 62.5/125 2-MM12F SM12F
[Symbol]	[Symbol]	SIGNAL FACE W/BACKPLATE, "P" INDICATES PROGRAMMED HEAD
[Symbol]	[Symbol]	RAILROAD CONTROL CABINET
[Symbol]	[Symbol]	ILLUMINATED SIGN "NO LEFT TURN"
[Symbol]	[Symbol]	ILLUMINATED SIGN "NO RIGHT TURN"
[Symbol]	[Symbol]	GROUND ROD AT HANDHOLE (H), DOUBLE HANDHOLE (C), OR CONTROLLER (C)
[Symbol]	[Symbol]	GROUND ROD AT POST (P), OR MAST ARM POLE (MA)
[Symbol]	[Symbol]	GROUND ROD AT ELECTRIC SERVICE INSTALLATION

SCHEDULE OF QUANTITIES

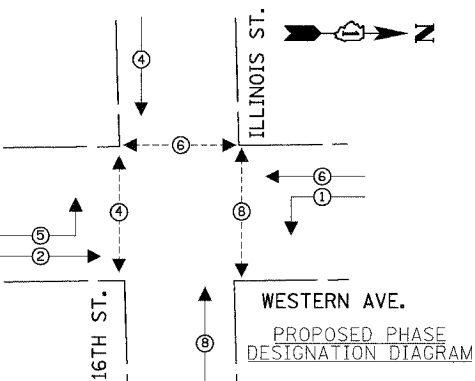
ITEM	UNIT	QUANTITY
RELOCATE SIGN PANEL, TYPE 1	SQ FT	27
CONDUIT IN TRENCH, 2" DIA., GALVANIZED STEEL	FOOT	53
CONDUIT IN TRENCH, 2 1/2" DIA., GALVANIZED STEEL	FOOT	69
CONDUIT IN TRENCH, 4" DIA., GALVANIZED STEEL	FOOT	10
CONDUIT PUSHED, 4" DIA., GALVANIZED STEEL	FOOT	125
DOUBLE HANDHOLE	EACH	1
TRENCH AND BACKFILL FOR ELECTRICAL WORK	FOOT	111
FULL-ACTUATED CONTROLLER AND TYPE IV CABINET (SPECIAL)	EACH	1
TRANSCEIVER - FIBER OPTIC	EACH	1
ELECTRIC CABLE IN CONDUIT, SIGNAL NO. 14 2C	FOOT	618
ELECTRIC CABLE IN CONDUIT, SIGNAL NO. 14 3C	FOOT	911
ELECTRIC CABLE IN CONDUIT, SIGNAL NO. 14 5C	FOOT	1548
ELECTRIC CABLE IN CONDUIT, SIGNAL NO. 14 7C	FOOT	675
ELECTRIC CABLE IN CONDUIT, LEAD-IN, NO. 14 1 PAIR	FOOT	1914
ELECTRIC CABLE IN CONDUIT, SERVICE, NO. 6 2C	FOOT	63
TRAFFIC SIGNAL POST, GALVANIZED STEEL 16 FT.	EACH	2
TRAFFIC SIGNAL POST, GALVANIZED STEEL 18 FT.	EACH	1
STEEL MAST ARM ASSEMBLY AND POLE, 22 FT.	EACH	1
STEEL MAST ARM ASSEMBLY AND POLE, 30 FT.	EACH	1
CONCRETE FOUNDATION, TYPE A	FOOT	16
CONCRETE FOUNDATION, TYPE D	FOOT	4
CONCRETE FOUNDATION, TYPE E 36-INCH DIAMETER	FOOT	30
DRILL EXISTING HANDHOLE	EACH	8
SIGNAL HEAD, LED, 1-FACE, 3-SECTION, MAST-ARM MOUNTED	EACH	2
SIGNAL HEAD, LED, 1-FACE, 5-SECTION, MAST-ARM MOUNTED	EACH	2
SIGNAL HEAD, LED, 2-FACE, 3-SECTION, BRACKET MOUNTED	EACH	2
SIGNAL HEAD, LED, 3-FACE, 2-3 SECTION, 1-5 SECTION BRACKET MOUNTED	EACH	2
PEDESTRIAN SIGNAL HEAD, LED, 1-FACE, BRACKET MOUNTED	EACH	4
PEDESTRIAN SIGNAL HEAD, LED, 2-FACE, BRACKET MOUNTED	EACH	1
TRAFFIC SIGNAL BACKPLATE, LOUVERED, ALUMINUM	EACH	4
INDUCTIVE LOOP DETECTOR	EACH	9
DETECTOR LOOP, TYPE I	FOOT	629
LIGHT DETECTOR	EACH	2
LIGHT DETECTOR AMPLIFIER	EACH	1
PEDESTRIAN PUSH-BUTTON	EACH	5
TEMPORARY TRAFFIC SIGNAL INSTALLATION	EACH	1
REMOVE ELECTRIC CABLE FROM CONDUIT	FOOT	5159
REMOVE EXISTING TRAFFIC SIGNAL EQUIPMENT	EACH	1
REMOVE EXISTING HANDHOLE	EACH	2
REMOVE EXISTING CONCRETE FOUNDATION	EACH	8
SERVICE INSTALLATION, GROUND MOUNTED	EACH	1
ELECTRIC CABLE IN CONDUIT, GROUNDING, NO. 6, 1C	FOOT	460
ELECTRIC CABLE IN CONDUIT, NO. 20 3/C, TWISTED & SHIELDED	FOOT	128
UNINTERRUPTIBLE POWER SUPPLY	EACH	1

F.A.U. RTE.	SECTION	COUNTY	TOTAL SHEETS	SHEET NO.
2845	3152WRS	COOK	195	112
STA.	TO STA.			
FED. ROAD DIST. NO.	ILLINOIS	FED. AID PROJECT		
CONTRACT NO.			62742	

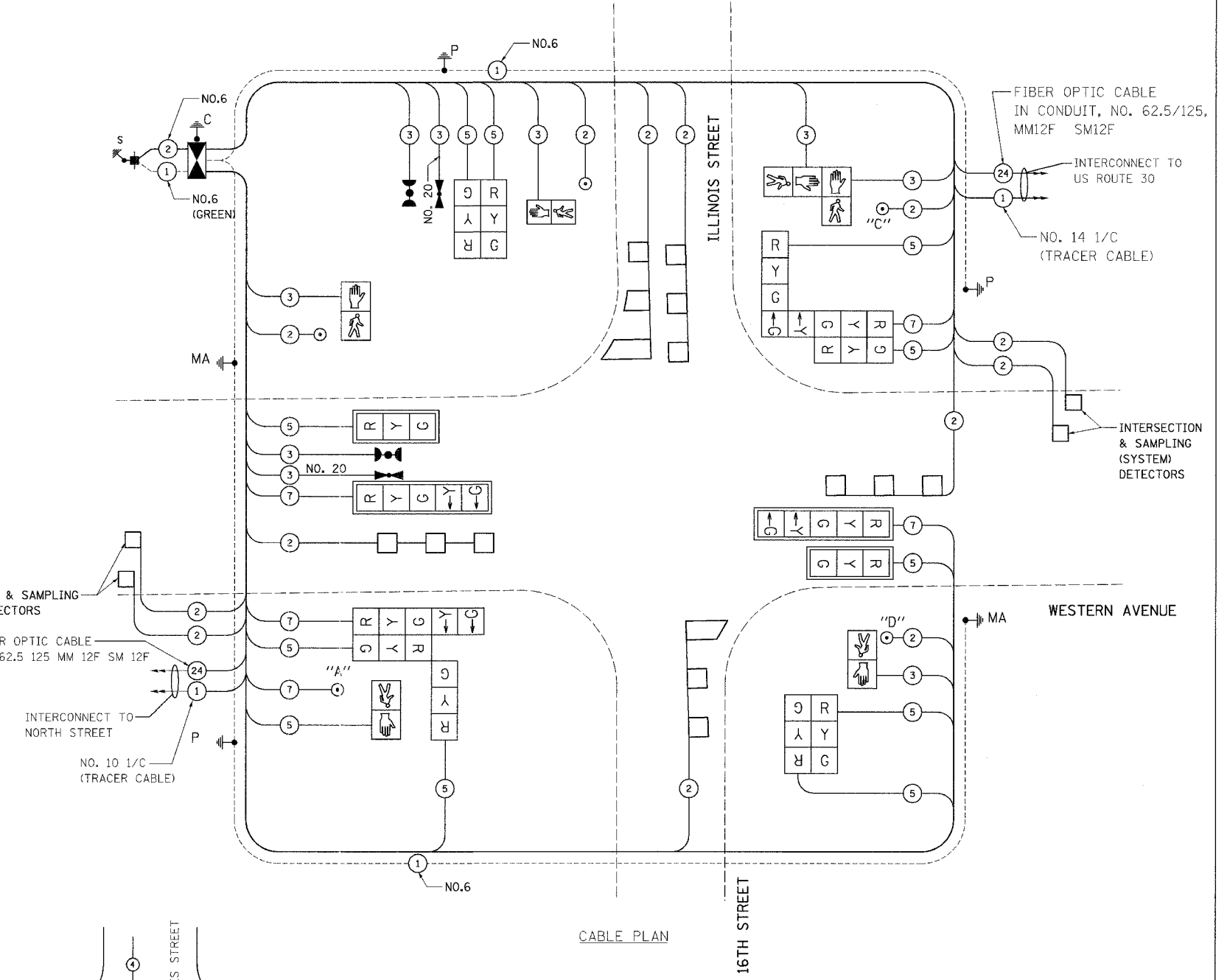
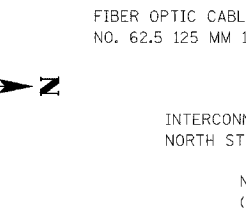
CONTROLLER SEQUENCE



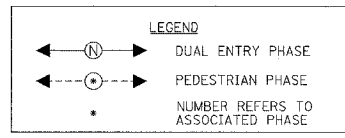
CONTROLLER SEQUENCE



INTERSECTION & SAMPLING (SYSTEM) DETECTORS

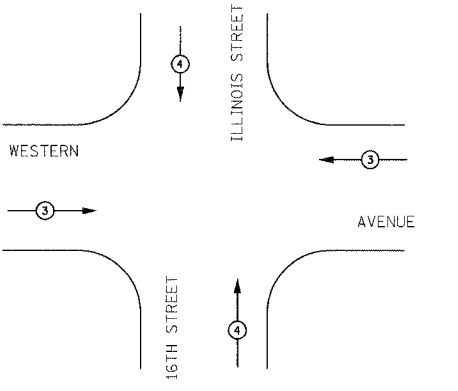


I.D.O.T. TRAFFIC SIGNAL INSTALLATION ELECTRICAL SERVICE REQUIREMENTS						TOTAL WATTAGE
TYPE	NO. LAMPS	WATTAGE INCAND.	LED	%OPERATION		
SIGNAL (RED)	14	135	17	0.50		119
(YELLOW)	14	135	25	0.25		87.5
(GREEN)	14	135	15	0.25		52.5
ARROW	8	135	12	0.10		9.6
PED. SIGNAL	6	90	25	1.00		150
CONTROLLER	1	100	100	1.00		100
ILLUM. SIGN		84		0.05		
FLASHER				0.50		
TOTAL =						518.6



FOUNDATION (DEPTH)	FT. (m)	CABLE SLACK	FT. (m)	VERTICAL	FT. (m)
TYPE A - POST	4 (1.2)	HANDHOLE	6.5 (2.0)	ALL FOUNDATIONS	3.0 (1.0)
D - CONTROLLER	4 (1.2)	DOUBLE HANDHOLE	13 (4.0)	MAST ARM (L) POLE	20.0 (6.0)
E - M. ARM POLE		SIGNAL POST	0 (0.0)	BRACKET MOUNTED	13 (4.0)
24" (600mm)	10 (3.0)	CONTROLLER CAB.	0 (0.0)	PED. PUSH-BUTTON	6 (2.0)
30" (750mm)	15 (4.6)	FIBER OPTIC	13 (4.0)	ELECTRIC SERVICE	13.5 (4.1)
		ELECTRIC SERVICE	1 (0.5)	SERVICE TO GROUND	13.5 (4.1)
		GROUND CABLE	1 (0.5)	POST MOUNTED	13 (4.0)

EMERGENCY VEHICLE PREEMPTION SEQUENCE



PROPOSED EMERGENCY VEHICLE PREEMPTOR	
EMERGENCY VEHICLE PREEMPTOR	3 4
MOVEMENT	← →

PUSH-BUTTON NOTES:

1. PUSH-BUTTON "C" SHALL PLACE A CALL TO PHASES 6 AND 8.

NOTE:
 THE TRAFFIC SIGNAL CONTROL EQUIPMENT FOR THIS PROJECT SHALL BE "ECONOLITE".

REVISIONS	
NAME	DATE

ILLINOIS DEPARTMENT OF TRANSPORTATION
CABLE PLAN, PHASE DESIGNATION DIAGRAM, SCHEDULE OF QUANTITIES
WESTERN AVE. AT ILLINOIS ST./16TH ST.
 SCALE: VERT. NONE
 HORIZ. 1"=20'
 DATE 5/17/2007
 DRAWN BY JLA
 DESIGNED BY KK/BPT
 CHECKED BY JTL/BPT

PLOT DATE = 5/18/2007
 PLOT SCALE = 1"=20'
 USER NAME = JLA