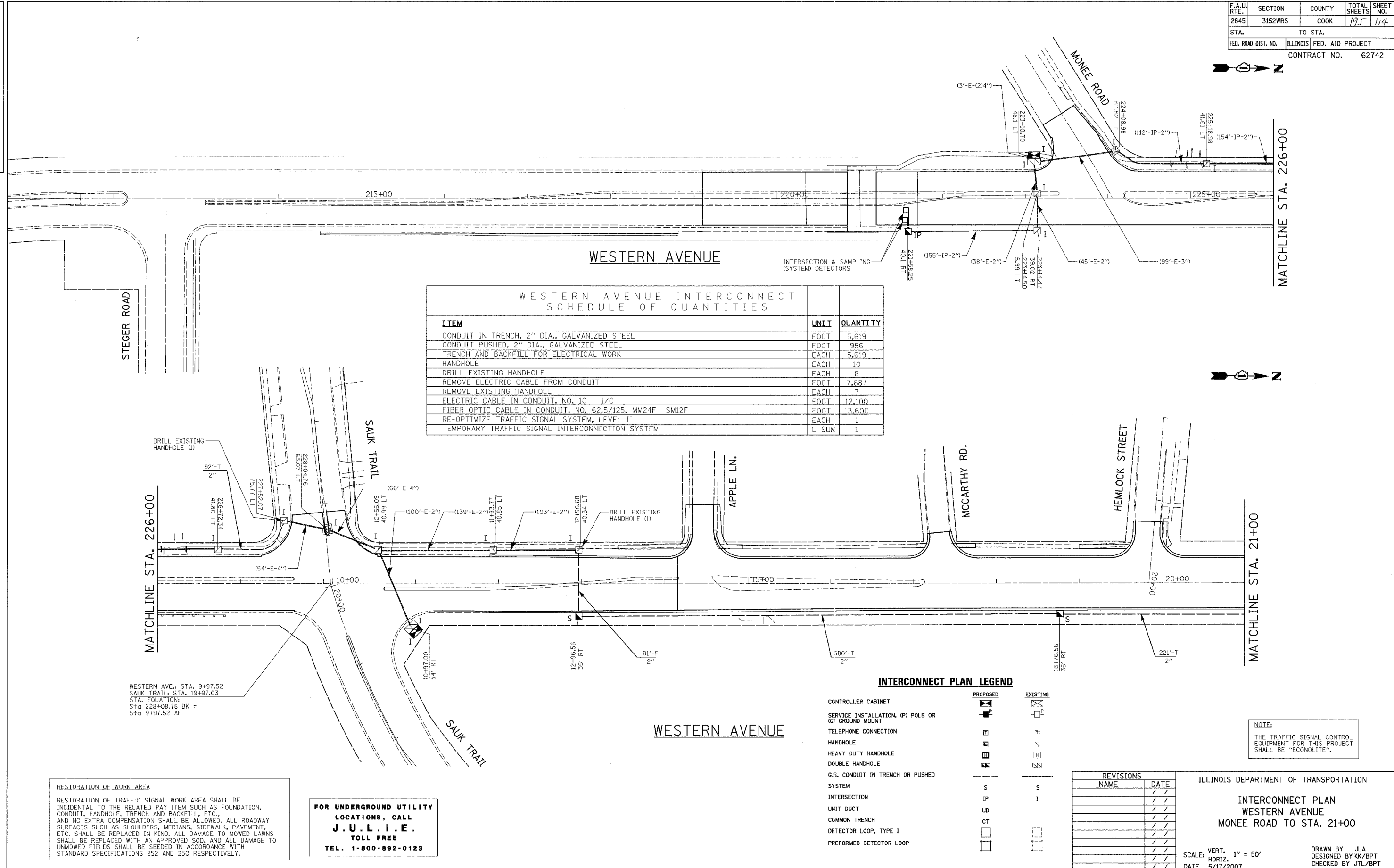


F.A.U. RTE.	SECTION	COUNTY	TOTAL SHEETS	SHEET NO.
2845	3152WRS	COOK	195	114
STA.	TO STA.			
FED. ROAD DIST. NO.	ILLINOIS	FED. AID PROJECT		
			CONTRACT NO.	62742



ITEM	UNIT	QUANTITY
CONDUIT IN TRENCH, 2" DIA., GALVANIZED STEEL	FOOT	5,619
CONDUIT PUSHED, 2" DIA., GALVANIZED STEEL	FOOT	956
TRENCH AND BACKFILL FOR ELECTRICAL WORK	EACH	5,619
HANDHOLE	EACH	10
DRILL EXISTING HANDHOLE	EACH	8
REMOVE ELECTRIC CABLE FROM CONDUIT	FOOT	7,687
REMOVE EXISTING HANDHOLE	EACH	7
ELECTRIC CABLE IN CONDUIT, NO. 10 1/C	FOOT	12,100
FIBER OPTIC CABLE IN CONDUIT, NO. 62.5/125, MM24F SM12F	FOOT	13,600
RE-OPTIMIZE TRAFFIC SIGNAL SYSTEM, LEVEL II	EACH	1
TEMPORARY TRAFFIC SIGNAL INTERCONNECTION SYSTEM	L SUM	1

INTERCONNECT PLAN LEGEND

	PROPOSED	EXISTING
CONTROLLER CABINET	[Symbol]	[Symbol]
SERVICE INSTALLATION, (P) POLE OR (G) GROUND MOUNT	[Symbol]	[Symbol]
TELEPHONE CONNECTION	[Symbol]	[Symbol]
HANDHOLE	[Symbol]	[Symbol]
HEAVY DUTY HANDHOLE	[Symbol]	[Symbol]
DOUBLE HANDHOLE	[Symbol]	[Symbol]
G.S. CONDUIT IN TRENCH OR PUSHED SYSTEM	S	S
INTERSECTION	IP	I
UNIT DUCT	UD	
COMMON TRENCH	CT	
DETECTOR LOOP, TYPE I	[Symbol]	[Symbol]
PERFORMED DETECTOR LOOP	[Symbol]	[Symbol]

NOTE:
THE TRAFFIC SIGNAL CONTROL EQUIPMENT FOR THIS PROJECT SHALL BE "ECONOLITE".

RESTORATION OF WORK AREA
RESTORATION OF TRAFFIC SIGNAL WORK AREA SHALL BE INCIDENTAL TO THE RELATED PAY ITEM SUCH AS FOUNDATION, CONDUIT, HANDHOLE, TRENCH AND BACKFILL, ETC., AND NO EXTRA COMPENSATION SHALL BE ALLOWED. ALL ROADWAY SURFACES SUCH AS SHOULDERS, MEDIANS, SIDEWALK, PAVEMENT, ETC. SHALL BE REPLACED IN KIND. ALL DAMAGE TO MOWED LAWNS SHALL BE REPLACED WITH AN APPROVED SOD, AND ALL DAMAGE TO UNMOWED FIELDS SHALL BE SEEDED IN ACCORDANCE WITH STANDARD SPECIFICATIONS 252 AND 250 RESPECTIVELY.

FOR UNDERGROUND UTILITY LOCATIONS, CALL J.U.L.I.E. TOLL FREE TEL. 1-800-892-0123

REVISIONS	
NAME	DATE

ILLINOIS DEPARTMENT OF TRANSPORTATION
INTERCONNECT PLAN
WESTERN AVENUE
MONEY ROAD TO STA. 21+00
SCALE: VERT. 1" = 50'
HORIZ. 1" = 50'
DATE 5/11/2007
DRAWN BY JLA
DESIGNED BY KK/BPT
CHECKED BY JTL/BPT