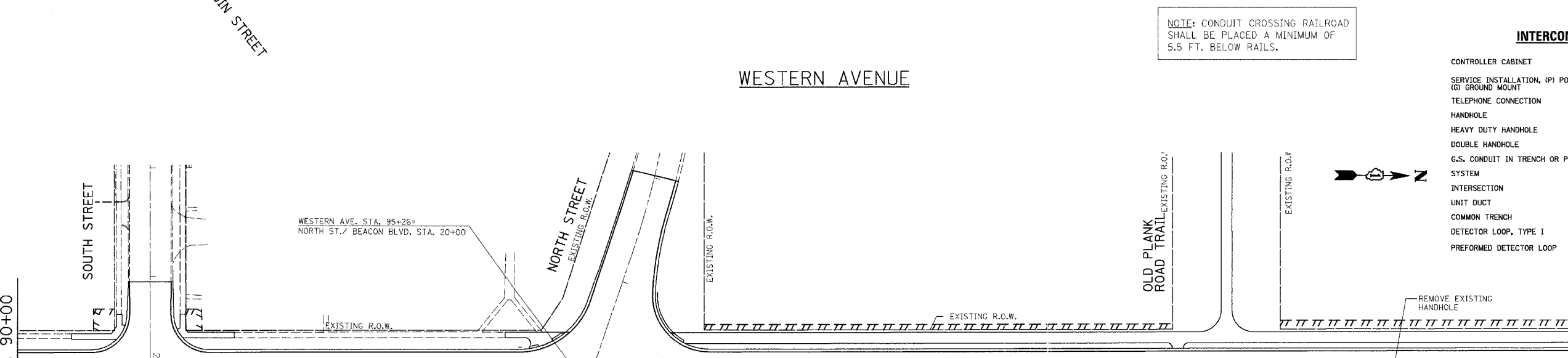
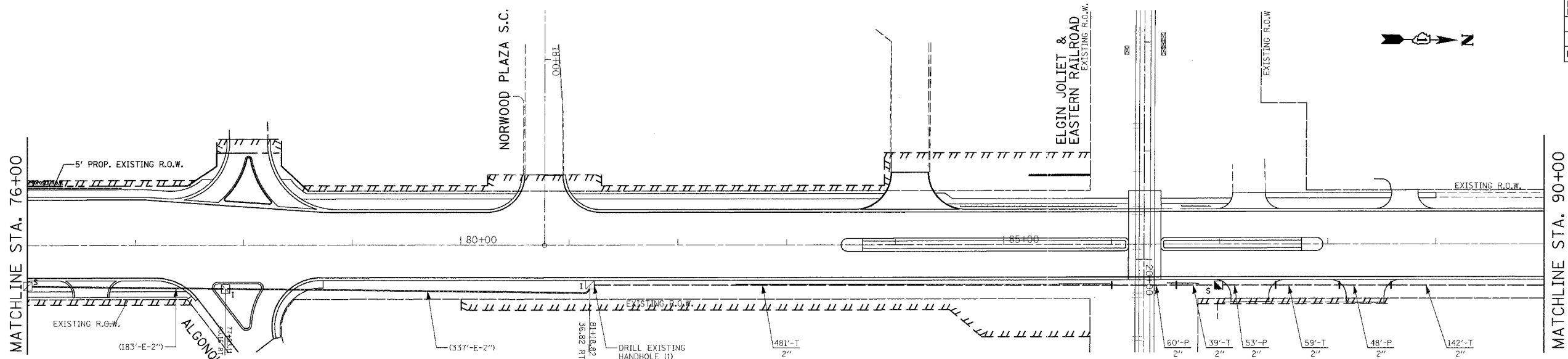


PREPARED BY:
CEMCON, Ltd.
 Consulting Engineers & Planners
 2280 White Oak Circle, Suite 100
 Aurora, Illinois 60504-9675
 Tel: 630.882.2100 Fax: 630.882.2199
 E-Mail: ccm@cemcon.com Web: www.cemcon.com

F.A.H. RTE.	SECTION	COUNTY	TOTAL SHEETS	SHEET NO.
2845	3152WRS	COOK	195	117
STA. 76+00		TO STA. 104+50		
FED. ROAD DIST. NO.	ILLINOIS FED. AID PROJECT		CONTRACT NO. 62742	



NOTE: CONDUIT CROSSING RAILROAD SHALL BE PLACED A MINIMUM OF 5.5 FT. BELOW RAILS.

INTERCONNECT PLAN LEGEND

	PROPOSED	EXISTING
CONTROLLER CABINET	[Symbol]	[Symbol]
SERVICE INSTALLATION, (P) POLE OR (G) GROUND MOUNT	[Symbol]	[Symbol]
TELEPHONE CONNECTION	[Symbol]	[Symbol]
HANDHOLE	[Symbol]	[Symbol]
HEAVY DUTY HANDHOLE	[Symbol]	[Symbol]
DOUBLE HANDHOLE	[Symbol]	[Symbol]
G.S. CONDUIT IN TRENCH OR PUSHED SYSTEM	[Symbol]	[Symbol]
INTERSECTION	[Symbol]	[Symbol]
UNIT DUCT	[Symbol]	[Symbol]
COMMON TRENCH	[Symbol]	[Symbol]
DETECTOR LOOP, TYPE I	[Symbol]	[Symbol]
PERFORMED DETECTOR LOOP	[Symbol]	[Symbol]

FOR UNDERGROUND UTILITY LOCATIONS, CALL J.U.L.I.E. TOLL FREE TEL. 1-800-892-0123

RESTORATION OF WORK AREA
 RESTORATION OF TRAFFIC SIGNAL WORK AREA SHALL BE INCIDENTAL TO THE RELATED PAY ITEM SUCH AS FOUNDATION, CONDUIT, HANDHOLE, TRENCH AND BACKFILL, ETC., AND NO EXTRA COMPENSATION SHALL BE ALLOWED. ALL ROADWAY SURFACES SUCH AS SHOULDERS, MEDIANS, SIDEWALK, PAVEMENT, ETC. SHALL BE REPLACED IN KIND. ALL DAMAGE TO MOWED LAWNS SHALL BE REPLACED WITH AN APPROVED SOD, AND ALL DAMAGE TO UNMOWED FIELDS SHALL BE SEEDED IN ACCORDANCE WITH STANDARD SPECIFICATIONS 252 AND 250 RESPECTIVELY.

REVISIONS	
NAME	DATE

ILLINOIS DEPARTMENT OF TRANSPORTATION
INTERCONNECT PLAN
WESTERN AVENUE
STA. 76+00 TO STA. 104+50
 SCALE: VERT. 1" = 50'
 HORIZ. 1" = 50'
 DATE 5/17/2007
 DRAWN BY JLA
 DESIGNED BY KK/BPT
 CHECKED BY JTL/BPT

PLOT DATE = 5/18/2007
 FILE NAME = J:\Users\jla\Documents\31220064\31220064.dgn
 PLOT SCALE = 1/2" = 1'-0"
 USER NAME = JLA