
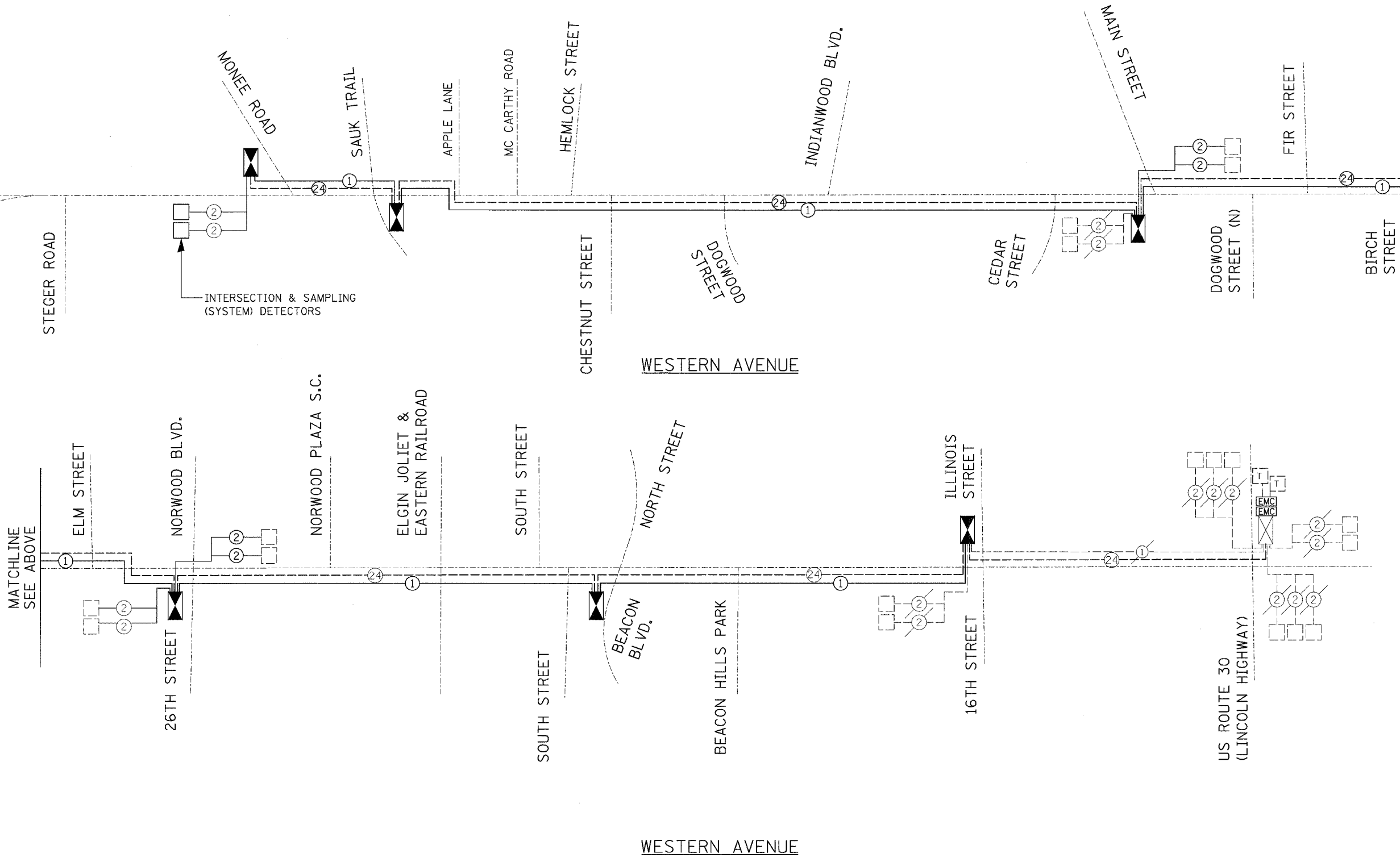
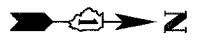


PREPARED BY:
CEMCON, Ltd.
 Consulting Engineers, Land Surveyors & Planners
 2nd Floor, 111/1018, 60504-9675
 Aurora, Illinois
 Ph: 630.862.2100 Fax: 630.862.2199
 E-Mail: cadd@cemcon.com Website: www.cemcon.com



F.A.U. RTE.	SECTION	COUNTY	TOTAL SHEETS	SHEET NO.
2845	3152WRS	COOK	195	119
STA.		TO STA.		
FED. ROAD DIST. NO.		ILLINOIS FED. AID PROJECT		
				CONTRACT NO. 62742



INTERCONNECT SCHEMATIC LEGEND

EXISTING INTERSECTION CONTROLLER	
PROPOSED INTERSECTION CONTROLLER	
EXISTING MASTER CONTROLLER	
PROPOSED MASTER CONTROLLER	
MASTER MASTER CONTROLLER	
EXISTING INTERSECTION & SAMPLING (SYSTEM) DETECTORS	
PROPOSED INTERSECTION & SAMPLING (SYSTEM) DETECTORS	
EXISTING INTERSECTION LOOP DETECTORS	
PROPOSED SAMPLING (SYSTEM) DETECTORS	
EXISTING SAMPLING (SYSTEM) DETECTORS	
PROPOSED SAMPLING (SYSTEM) DETECTORS	
EXISTING SAMPLING (SYSTEM) DETECTORS AND SAMPLING (SYSTEM) DETECTORS	
EXISTING SAMPLING (SYSTEM) DETECTORS	
PROPOSED SAMPLING (SYSTEM) DETECTORS	
EXISTING SAMPLING (SYSTEM) DETECTORS	
PROPOSED SAMPLING (SYSTEM) DETECTORS	
EXISTING SAMPLING (SYSTEM) DETECTORS AND SAMPLING (SYSTEM) DETECTORS	
EXISTING SAMPLING (SYSTEM) DETECTORS	
PROPOSED SAMPLING (SYSTEM) DETECTORS	
EXISTING INTERCONNECT CABLE NO. 62.5/125 12F FIBER OPTIC CABLE	
PROPOSED INTERCONNECT CABLE NO. 62.5/125 12F FIBER OPTIC CABLE	
EXISTING INTERCONNECT CABLE - NO. 18 3 PAIR TWISTED, SHIELDED	
PROPOSED INTERCONNECT CABLE - NO. 18 3 PAIR TWISTED, SHIELDED	
EXISTING LOOP DETECTOR CABLE 2/C TWISTED, SHIELDED	
PROPOSED LOOP DETECTOR CABLE 2/C TWISTED, SHIELDED	
EXISTING ELECTRIC CABLE, 1/C (AS SPECIFIED)	
PROPOSED ELECTRIC CABLE, 1/C (AS SPECIFIED)	
EXISTING TELEPHONE CONNECTION	
PROPOSED TELEPHONE CONNECTION	

REVISIONS	
NAME	DATE

ILLINOIS DEPARTMENT OF TRANSPORTATION
INTERCONNECT SCHEMATIC
WESTERN AVENUE
MONEE STREET TO US ROUTE 30
(LINCOLN HWY)

SCALE: VERT. 1" = 100'
 HORIZ. 1" = 100'
 DATE 5/17/2007

DRAWN BY JLA
 DESIGNED BY KK/BPT
 CHECKED BY JTL/BPT

PLOT DATE = 5/18/2007
 FILE NAME = J:\m\projects\3523085A\sign\aha\133\IntercoSchem.dgn
 USER NAME = JLA