

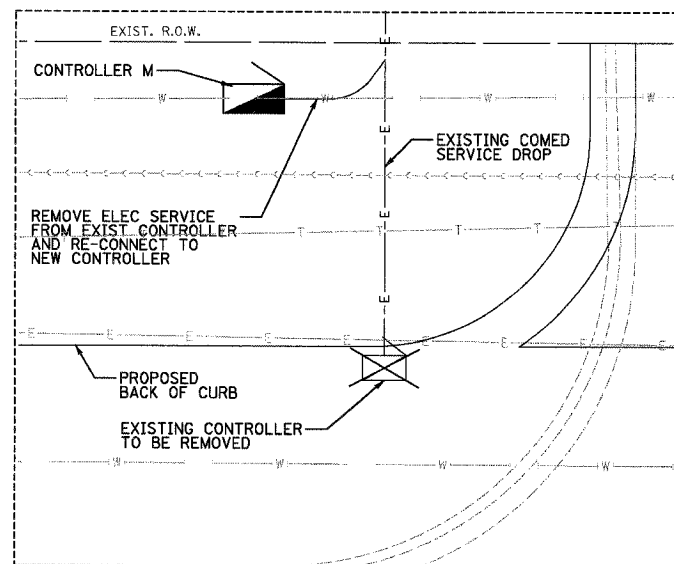
F.A. RTE.	SECTION	COUNTY	TOTAL SHEETS	SHEET NO.
2845	3152 WRS	COOK	145	127
STA. 21+00		TO STA. 36+00		
FED. ROAD DIST. NO. 1 ILLINOIS FED. AID PROJECT				

LEGEND:

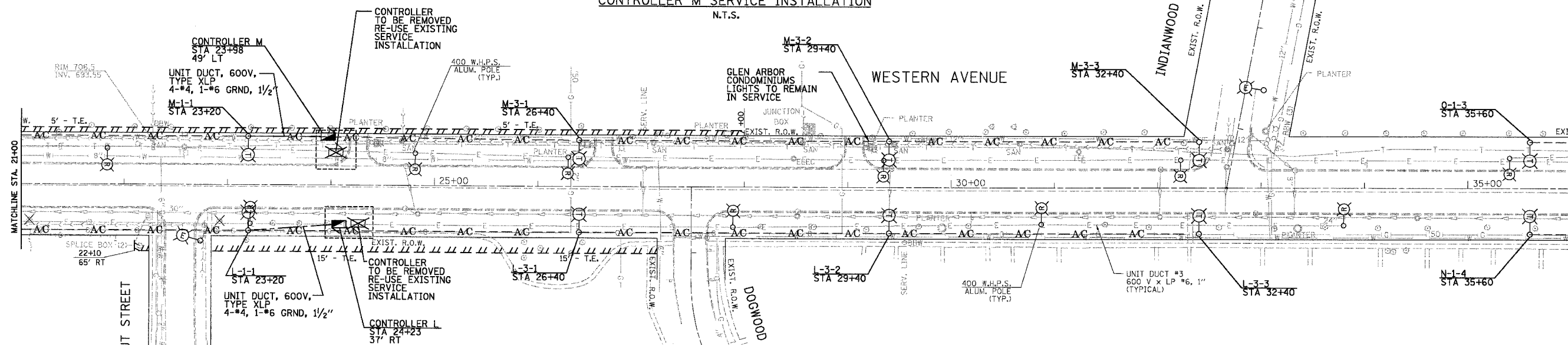
- EXISTING LIGHTING CONTROLLER, SINGLE DOOR
- EXISTING LIGHTING CONTROLLER AND CONCRETE PAD, TO BE REMOVED
- EXISTING ELECTRIC UTILITY POLE
- EXISTING LIGHTING UNIT TO BE REMOVED
- TEMPORARY SINGLE ARM LIGHTING UNIT 50' WOOD POLE, 15' MAST ARM, 400W LUMINAIRE, 12' BACK OF CURB SETBACK UNLESS OTHERWISE NOTED
- TEMPORARY AERIAL CABLE, 3-1/C NO. 4 WITH MESSENGER WIRE, UNLESS OTHERWISE NOTED
- UNDERGROUND ELECTRICAL TYPE AND SIZE AS NOTED
- PROPOSED LIGHTING CONTROLLER, SINGLE DOOR
- 40' WOOD POLE
- CONTROLLER DESIGNATION
- CIRCUIT DESIGNATION
- FIXTURE SEQUENCE DESIGNATION

SERVICE INSTALLATION NOTES:

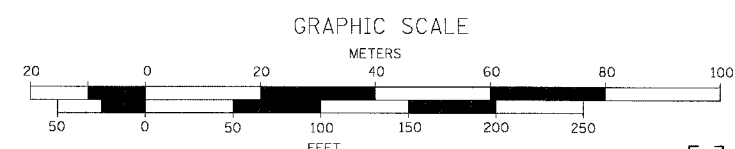
1. CONTRACTOR TO VERIFY ACTUAL COMED SERVICE DROP LOCATIONS PRIOR TO STARTING WORK.
2. LOCATION OF CONTROLLER IS SHOWN GRAPHICALLY. FINAL LOCATIONS SHALL BE ACCORDING TO COMED SERVICE DROP AND OTHER UTILITY LOCATIONS. CONTRACTOR TO VERIFY LOCATION WITH ENGINEER PRIOR TO STARTING WORK.



CONTROLLER M SERVICE INSTALLATION
N.T.S.



CONTROLLER L SERVICE INSTALLATION
N.T.S.



REVISIONS	
NAME	DATE

ILLINOIS DEPARTMENT OF TRANSPORTATION
WESTERN AVE. DEMOLITION, TEMPORARY LIGHTING AND ELECTRICAL SERVICE PLAN
 SCALE: 1" = 50'
 DATE: 1/7/07
 DRAWN BY: A.P.
 CHECKED BY: G.A.O.



PLOT DATE = 5/18/2007
 FILE NAME = #FILE#
 PLOT SCALE = #SCALE#
 USER NAME = #USER#