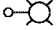

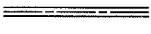



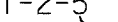
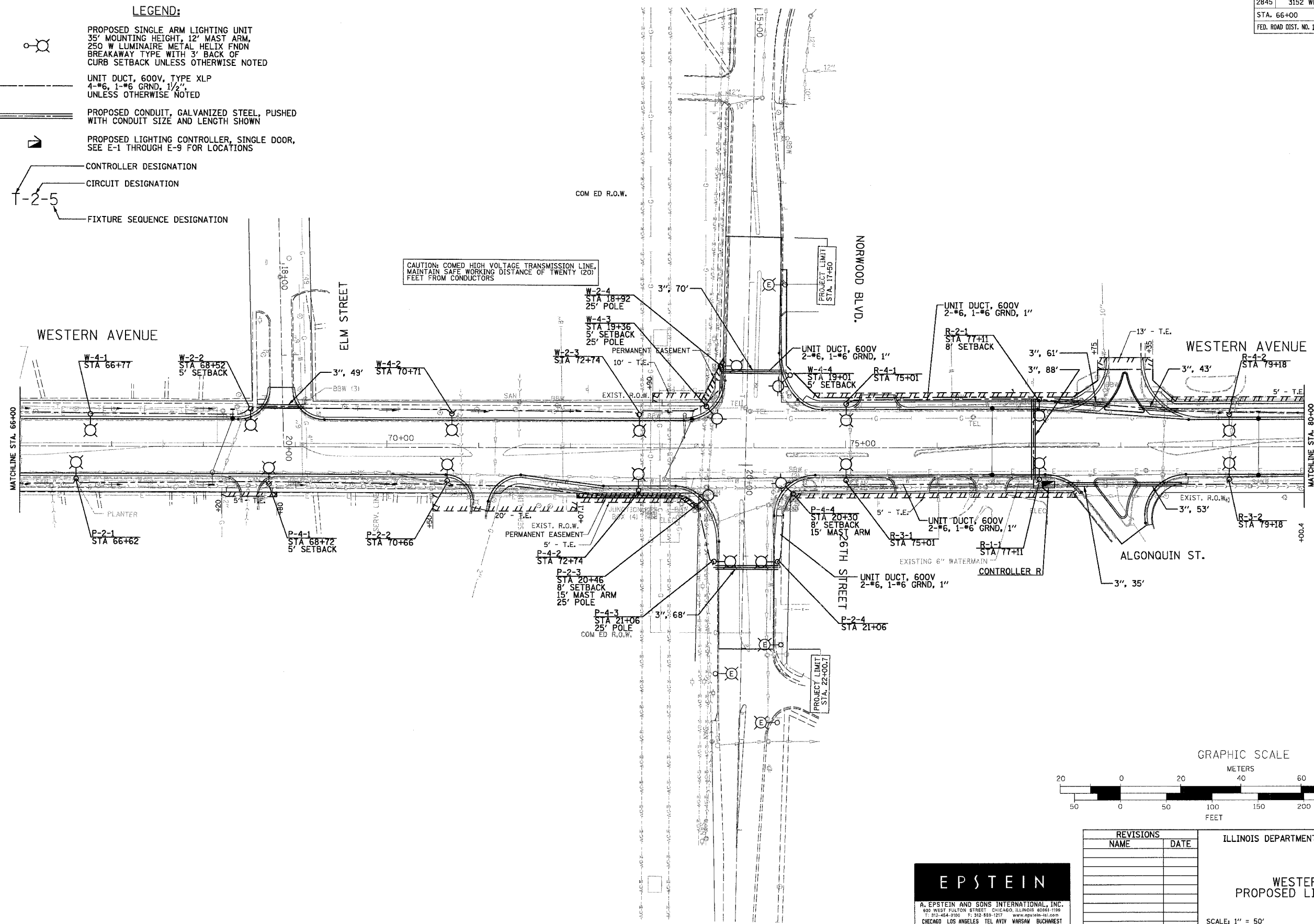


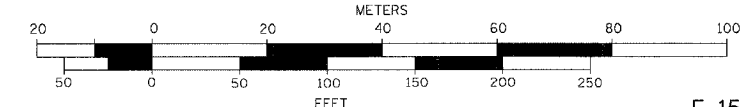
F.A. RTE.	SECTION	COUNTY	TOTAL SHEETS	SHEET NO.
2845	3152 WRS	COOK	191	139
STA. 66+00		TO STA. 80+00		
FED. ROAD DIST. NO. 1 ILLINOIS FED. AID PROJECT				

LEGEND:

-  PROPOSED SINGLE ARM LIGHTING UNIT
35' MOUNTING HEIGHT, 12' MAST ARM,
250 W LUMINAIRE METAL HELIX FNDN
BREAKAWAY TYPE WITH 3' BACK OF
CURB SETBACK UNLESS OTHERWISE NOTED
-  UNIT DUCT, 600V, TYPE XLP
4-#6, 1-#6 GRND, 1/2",
UNLESS OTHERWISE NOTED
-  PROPOSED CONDUIT, GALVANIZED STEEL, PUSHED
WITH CONDUIT SIZE AND LENGTH SHOWN
-  PROPOSED LIGHTING CONTROLLER, SINGLE DOOR,
SEE E-1 THROUGH E-9 FOR LOCATIONS
-  CONTROLLER DESIGNATION
-  CIRCUIT DESIGNATION
-  FIXTURE SEQUENCE DESIGNATION



GRAPHIC SCALE



E-15

PLOT DATE = 5/18/2007
FILE NAME = #FILE#
USER NAME = #USER#

EPSTEIN
A. EPSTEIN AND SONS INTERNATIONAL, INC.
800 WEST FULTON STREET CHICAGO, ILLINOIS 60611-1196
TEL: 312-454-9100 FAX: 312-839-1271 www.epstein-il.com
CHICAGO LOS ANGELES TEL AVIV WARSAW BUCHAREST

REVISIONS	
NAME	DATE

ILLINOIS DEPARTMENT OF TRANSPORTATION

**WESTERN AVE.
PROPOSED LIGHTING PLAN**

SCALE: 1" = 50'
DATE: 1/7/07

DRAWN BY: A.P.
CHECKED BY: G.A.O.