

F.A.I. RTE.	SECTION	COUNTY	TOTAL SHEETS	SHEET NO.
74	72(7,8,9,9-1)LS	PEORIA	19	2
STA. _____		TO STA. _____		
FED. ROAD DIST. NO. 4		ILLINOIS	FED. AID PROJECT	

GENERAL NOTES:

1. MICROSTATION AND GEOPAK FILES OF THIS PROJECT WILL BE MADE AVAILABLE TO THE CONTRACTOR. IF THERE IS A CONFLICT BETWEEN THE ELECTRONIC FILES AND THE PRINTED CONTRACT PLANS AND DOCUMENTS, THE PRINTED CONTRACT PLANS AND DOCUMENTS SHALL TAKE PRECEDENCE OVER THE ELECTRONIC FILES. THE CONTRACTOR SHALL ACCEPT ALL RISK ASSOCIATED WITH USING THE ELECTRONIC FILES AND SHALL HOLD THE DEPARTMENT HARMLESS FOR ANY ERRORS OR OMISSIONS IN THE ELECTRONIC FILES AND THE DATA CONTAINED THEREIN. ERRORS OR DELAYS RESULTING FROM THE USE OF THE ELECTRONIC FILES BY THE CONTRACTOR SHALL NOT RESULT IN AN EXTENSION OF TIME FOR ANY INTERIM OR FINAL COMPLETION DATE OR SHALL NOT BE CONSIDERED CAUSE FOR ADDITIONAL COMPENSATION. THE CONTRACTOR SHALL NOT USE, SHARE, OR DISTRIBUTE THESE ELECTRONIC FILES EXCEPT FOR THE PURPOSE OF CONSTRUCTING THIS CONTRACT. ANY CLAIMS BY THIRD PARTIES DUE TO USE OR ERRORS SHALL BE THE SOLE RESPONSIBILITY OF THE CONTRACTOR. THE CONTRACTOR SHALL INCLUDE THIS DISCLAIMER WITH THE TRANSFER OF THESE ELECTRONIC FILES TO ANY OTHER PARTIES AND SHALL INCLUDE APPROPRIATE LANGUAGE BINDING THEM TO SIMILAR RESPONSIBILITIES.

PROJECT SPECIFIC GENERAL NOTES:

1. BEFORE STARTING ANY EXCAVATION, THE CONTRACTOR SHALL CALL "J.U.L.I.E." AT 800-892-0123 FOR FIELD LOCATIONS OF BURIED ELECTRIC TELEPHONE AND GAS FACILITIES. (48 HOURS NOTIFICATION IS REQUIRED), REFER ART. 107.31 FOR UTILITIES PROPERTIES AND SERVICES
2. THE CONTRACTOR SHALL BE RESPONSIBLE TO VERIFY ALL DIMENSIONS AND CONDITIONS EXISTING IN THE FIELD PRIOR TO CONSTRUCTION AND ORDERING MATERIALS.
3. THE ACTUAL LOCATION OF PROPOSED LANDSCAPING SHALL BE ADJUSTED BY THE RESIDENT ENGINEER IN THE FIELD TO AVOID UTILITIES AND FIT FIELD CONDITIONS.
4. WHERE SECTION OR SUB-SECTION MONUMENTS ARE ENCOUNTERED, THE ENGINEER SHALL BE NOTIFIED BEFORE SUCH MONUMENTS ARE REMOVED. THE CONTRACTOR SHALL PROTECT AND CAREFULLY PRESERVE ALL PROPERTY MARKERS AND MONUMENTS UNTIL THE OWNER, AN AUTHORIZED SURVEYOR, OR AGENT HAS WITNESSED THEIR LOCATION.
5. ALL PLANS ARE IN SCALE, FOR CONSTRUCTION DIMENSIONS THE CONTRACTOR NEED TO VERIFY ON SITE.
6. REMOVAL OF UNDERBRUSH, DEBRIS OR OTHER MISCELLANEOUS ITEMS TO ALLOW THE PLACEMENT OF LANDSCAPING ITEMS SHALL BE INCLUDED IN THE PRICE OF THE ASSOCIATED PAY ITEMS.
7. THE CONTRACTOR SHALL USE CARE IN GRADING OR EXCAVATING NEAR ANY AND ALL EXISTING ITEMS WHICH WILL NOT BE REMOVED. ANY DAMAGE DONE TO EXISTING ITEMS BY THE CONTRACTOR SHALL BE REPAIRED BY THE CONTRACTOR AT THE CONTRACTOR'S OWN EXPENSE.
8. INTERSEEDING, CLASS 2A AND MULCH, METHOD 2 LOCATIONS WILL BE SELECTED BY THE RESIDENT ENGINEER BASED ON CONDITIONS OF EXISTING TURF.
9. CONTROL ALL INVASIVE WEED SPECIES FOUND IN THE CLASS 4A AND CLASS 5 SEEDING AREAS AS DIRECTED BY THE ENGINEER. THE CONTROL IN SUCH AREAS SHALL BE COMPLETED AT THE TIME OF THE PHASE I, II, III, AND IV COMPLETION DATES. IF NOT COMPLETED AT EACH COMPLETION DATE, THE COMPLETION OF THAT PHASE WILL NOT BE ACCEPTED AND WILL RESULT IN A "FAILURE TO COMPLETE LANDSCAPE CONSTRUCTION AND LANDSCAPE ESTABLISHMENT WORK" AND BE CHARGED ACCORDINGLY.

COMMITMENTS:

COMMITMENTS SHALL NOT BE ALTERED WIHTOUT WRITTEN APPROVAL OF ALL PARTIES TO WHICH THE COMMITMENT WAS MADE

NO COMMITMENTS HAVE BEEN INCURED ON THIS PROJECT.

STATUS OF UTILITIES:

NO UTILITIES ARE TO BE RELOCATED FOT THIS PROJECT. THE CONTRACTOR SHALL CONTACT JULIE AND IDOT PRIOR TO ANY EXCAVATION. ALL IDOT UTILITES WILL BE LOCATED BY "OTHERS".

STANDARDS LIST:

- 202001 EARTH MEDIAN DITCH CHECK
- 280001-03 TEMPORARY EROSION CONTROL SYSTEM
- 202001 EARTH MEDIAN DITCH CHECK
- 701106-01 OFF-ROAD OPERATIONS, MULTILANE, MORE THAN 4.5 m (15') AWAY, FOR SPEEDS > 45 MPH
- 701101-01 OFF-ROAD OPERATIONS, MULTILANE LESS THAN 4.5 m (15') AWAY FOR SPEEDS > 45 MPH
- 701201-02 LANE CLOSURE, 2L, 2W, DAY ONLY ON-ROAD TO 600mm OFF FOR SPEEDS > 45 MPH
- 701400-02 APPROACH TO LANE CLOSURE, FREEWAY/EXPRESSWAY
- 701406-04 LANE CLOSURE, MULTILANE, DAY OPERATIONS ONLY FOR SPEEDS > 45 MPH
- 701411-03 LANE CLOSURE, MULTILANE AT ENTRANCE OR EXIT RAMP FOR SPEEDS > 45 MPH
- 701426-02 LANE CLOSURE, MULTILANE, INTERMITTENT OR MOVING OPER. FOR SPEEDS > 45 MPH
- 701502-01 URBAN LANE CLOSURE 2L, 2W, WITH BIDIRECTIONAL LEFT TURN LANE
- 701601-04 URBAN LANE CLOSURE, MULTILANE 1W OR 2W WITH NONTRAVERSABLE MEDIAN
- 701602-02 URBAN LANE CLOSURE, MULTILANE 2W WITH BIDIRECTIONAL LEFT TURN LANE
- 701606-04 URBAN LANE CLOSURE, MULTILANE 2W WITH MOUNTABLE MEDIAN
- 702001-06 TRAFFIC CONTROL DEVICES

REVISIONS		ILLINOIS DEPARTMENT OF TRANSPORTATION FAI ROUTE 74 (I-74) GENERAL NOTES, STANDARDS AND COMMITMENTS
NAME	DATE	
		DATE: 07/16/2004 DRAWN BY: KC/DL CHECKED BY: JB
FINAL PLAN	05/11/04	
PREFINAL PLAN	03/01/04	
PRELIMINARY	11/17/03	

SUMMARY OF QUANTITIES

P. A. C. NO.	SECTION	COUNTY	TOTAL SHEETS	SHEET NO.
74	72(7,8,9,9-1)LS	PEORIA	19	3
STA.	TO STA.			
FED. ROAD DIST. NO. 9	ALTERN.	FED. AID PROJECT		

SUMMARY OF QUANTITIES			TOTAL QUANTITIES	URBAN CONSTRUCTION TYPE CODE					
CODE NO	ITEM	UNIT		100% STATE Y003					
28000300	TEMPORARY DITCH CHECKS	EACH	45	45					
28000500	INLET AND PIPE PROTECTION	EACH	12	12					
67100100	MOBILIZATION	L SUM	1	1					
70101700	TRAFFIC CONTROL AND PROTECTION	L SUM	1	1					
A2000420	TREE, ACER NIGRUM (BLACK MAPLE), 2-1/2" CALIPER, BALLED AND BURLAPPED	EACH	13	13					
A2002612	TREE, CARYA CORDIFORMIS (BITTERNUT HICKORY), 1-1/2" CALIPER, BALLED AND BURLAPPED	EACH	4	4					
A2004424	TREE, GINKGO BILOBA (GINKGO), 3" CALIPER, BALLED AND BURLAPPED	EACH	12	12					
A2004820	TREE, GLEDITSIA TRIANCANTHOS INERMIS SKYLINE (SKYLINE THORNLESS COMMON HONEYLOCUST), 2-1/2" CALIPER, BALLED AND BURLAPPED	EACH	1	1					
A2005020	TREE, GYMNOCLADUS DIOICUS (KENTUCKY COFFEETREE), 2-1/2" CALIPER, BALLED AND BURLAPPED	EACH	5	5					
A2006516	TREE, QUERCUS BICOLOR (SWAMP WHITE OAK), 2" CALIPER, BALLED AND BURLAPPED	EACH	29	29					
A2008920	TREE, ULMUS REGAL (REGAL ELM), 2-1/2" CALIPER, BALLED AND BURLAPPED	EACH	21	21					
B2000666	TREE, AMELANCHIER X GRANDIFLORA (APPLE SERVICEBERRY), 6' HEIGHT, SHRUB FORM, BALLED AND BURLAPPED	EACH	7	7					
B2004166	TREE, MALUS PRAIRIFIRE (PRAIRIFIRE CRAB-APPLE), 6' HEIGHT, CLUMP FORM, BALLED AND BURLAPPED	EACH	29	29					

SUMMARY OF QUANTITIES

P. A. L. NO.	SECTION	COUNTY	TOTAL SHEETS	SHEET NO.
74	72(7,8,9,9-1)LS	PEORIA	19	4
STA.	TO STA.			
FED. ROAD DIST. NO. 5	ILLINOIS	FED. AID PROJECT		

SUMMARY OF QUANTITIES			TOTAL QUANTITIES	URBAN		CONSTRUCTION TYPE CODE			
CODE NO	ITEM	UNIT		100% STATE Y003					
B2006268	TREE, SYRINGA RETICULATA (JAPANESE TREE LILAC), 7' HEIGHT, CLUMP FORM, BALLED AND BURLAPPED	EACH	22	22					
C2C003G3	SHRUB, AMOUPHA FRUITCOSA (INDIGO BUSH), CONTAINER GROWN, 3-GALLON	EACH	29	29					
C2C00524	SHRUB, ARONIA MELANOCARPA (BLACK CHOKEBERRY), 2' HEIGHT, CONTAINER	EACH	1396	1396					
C2C03036	SHRUB, FORSYTHIA NORTHERN SUN (NORTHERN SUN BORDER FORSYTHIA), 3' HEIGHT, CONTAINER	EACH	390	390					
C2C03936	SHRUB, ILEX VERTICILLATA (^{WINTER RED} WINTER RED WINTERBERRY), 3' HEIGHT, CONTAINER	EACH	125	125					
C2C05724	SHRUB, RHUS AROMATICA (FRAGRANT SUMAC), 2' WIDTH, CONTAINER	EACH	1038	1038					
C2C05936	SHRUB, RHUS GLABRA (SMOOTH SUMAC), 3' HEIGHT, CONTAINER	EACH	519	519					
C2C10924	SHRUB, SYRINGA MEYERI PALIBIN (DWARF KOREAN LILAC), 2' HEIGHT, CONTAINER	EACH	643	643					
C2003224	SHRUB, HAMAMELIS VERNALIS (VERNAL WITCH-HAZEL), 2' HEIGHT, BALLED AND BURLAPPED	EACH	64	64					
C2007224	SHRUB, ROSA KNOCKOUT (KNOCKOUT ROSE), 24" HEIGHT, CONTAINER	EACH	710	710					
C2016024	SHRUB, ROSA CHUCKLES (^{POLYANTHA} CHUCKLES ROSE), 24" HEIGHT, CONTAINER	EACH	220	220					
D2C00918	EVERGREEN, JUNIPERUS HORIZONTALIS HUGHES (HUGHES CREEPING JUNIPER), 18" WIDTH, CONTAINER	EACH	691	691					
D2002760	EVERGREEN, PINUS NIGRA (AUSTRIAN PINE), 5' HEIGHT, BALLED AND BURLAPPED	EACH	50	50					

SUMMARY OF QUANTITIES

P.A.L. NO.	SECTION	COUNTY	10% BIDS	SHEET NO.
74	7217.8,9,9-11LS	PEORIA	19	5
STA.		TO STA.		
FED. ROAD DIST. NO. 3		ILLINOIS	FED. AID PROJECT	

SUMMARY OF QUANTITIES			TOTAL QUANTITIES	URBAN CONSTRUCTION TYPE CODE					
CODE NO	ITEM	UNIT		100% STATE Y003					
E20010G1	VINE-CAMPSIS RADICAN (MINNESOTA TRUMPET VINE), 1-GALLON POT	EACH	37	37					
E20070G1	VINE-CLEMATIS MAXIMOWICZIANA (SWEET AUTUMN CLEMATIS), 1-GALLON POT	EACH	34	34					
E20156G1	VINE-LONICERA SAMPERVIREN (HONEYSUCKLE), 1-GALLON POT	EACH	303	303					
E20200G1	VINE-PARTHENOCISSUS QUINQUEFOLIA (VIRGINIA CREEPER), 1-GALLON POT	EACH	96	96					
E20220G1	VINE-PARTHENOCISSUS TRICUSPIDATA (BOSTON IVY), 1-GALLON POT	EACH	12	12					
K0026700	TREE CARE	EACH	388	388					
K0026810	SHRUB CARE	EACH	15912	15912					
K0026820	VINE CARE	EACH	964	964					
K0030490	PERENNIAL PLANTS, FOR SUN, 1/2 GALLON CONTAINER	UNIT	140.73	140.73					

SUMMARY OF QUANTITIES

P.A.L. NO.	SECTION	COUNTY	TOTAL SHEETS	SHEET NO.
74	T217,8,9,9-11LS	PEORIA	19	6
STA.		TO STA.		
FED. ROAD DIST. NO. 3		ILLINOIS	FED. AID PROJECT	

SUMMARY OF QUANTITIES			TOTAL QUANTITIES	URBAN CONSTRUCTION TYPE CODE					
CODE NO	ITEM	UNIT		100% STATE Y003					
MX032675	PERENNIAL PLANT CARE	SQ M	10653	10653					
MX032680	WEED CONTROL, PRE-EMERGENT GRANULAR HERBICIDE	KG	40	40					
M2011400	NITROGEN FERTILIZER NUTRIENT	KG	13	13					
M2011500	PHOSPHORUS FERTILIZER NUTRIENT	KG	8	8					
M2011600	POTASSIUM FERTILIZER NUTRIENT	KG	5	5					
M2500750	MOWING	HA	22	22					
M2503210	INTERSEEDING, CLASS 2A	HA	2	2					
M2503312	INTERSEEDING, CLASS 4A	HA	0.6	0.6					
M2503320	INTERSEEDING, CLASS 5	HA	0.2	0.2					
M2510115	MULCH, METHOD 2	HA	2	2					
M2520200	SUPPLEMENTAL WATERING	UNIT	781	781					
M2800400	PERIMETER EROSION BARRIER	METER	1145	1145					
XX003027	JUNIPERUS CHINENSIS "KALLAYS COMPACTA"	EACH	1031	1031					
XX005171	PEROVSKIA ATRIPLICIFOLIA 'LONGIN' 1(GAL)	EACH	1080	1080					

SCHEDULE OF QUANTITIES:

CONTRACT NO. 68367

F.A.I. RTE.	SECTION	COUNTY	TOTAL SHEETS	SHEET NO.
74	72(7,8,9,9-1)LS	PEORIA	19	7
STA.	TO STA.			
FED. ROAD DIST. NO. 4	ILLINOIS	FED. AID PROJECT		

KEY	ITEM	COMMON NAME	SIZE	UNIT	TOTAL	LOCATION - LAYOUT/SHEET NUMBER									
						L1	L2	L3	L4	L5	L6				
	DECIDUOUS TREES														
CC	CARYA CORDIFORMIS	BITTERNUT HICKORY	1-1/2" CALIPER, BALLED AND BURLAPPED	EACH	4	4	0	0	0	0	0	0	0	0	0
GD	GYMNOCLADUS DIOICUS	KENTUCKY COFFEETREE	2-1/2" CALIPER, BALLED AND BURLAPPED	EACH	5	0	0	0	5	0	0	0	0	0	0
QA	QUERCUS BICOLOR	SWAMP WHITE OAK	2" CALIPER, BALLED AND BURLAPPED	EACH	29	6	15	5	1	2	0	0	0	0	0
AN	ACER NIGRUM	BLACK MAPLE	2-1/2" CALIPER, BALLED AND BURLAPPED	EACH	13	5	8	0	0	0	0	0	0	0	0
GB	GINKGO BILOBA	GINKGO	3" CALIPER, BALLED AND BURLAPPED	EACH	12	4	8	0	0	0	0	0	0	0	0
GT	GLEDITSIA TRIACANTHOS INERMIS SKYLINE	SKYLINE THORNLESS HONEYLOCUST	2-1/2" CALIPER, BALLED AND BURLAPPED	EACH	1	0	0	1	0	0	0	0	0	0	0
UR	ULMUS REGAL	REGAL ELM	2-1/2" CALIPER, BALLED AND BURLAPPED	EACH	21	0	14	0	0	0	0	0	0	7	0
	ORNAMENTAL TREES														
AC	AMELANCHIER X GRANDIFLORA	APPLE SERVICEBERRY	6' HEIGHT, SHRUB FORM, BALLED AND BURLAPPED	EACH	7	0	4	3	0	0	0	0	0	0	0
SA	SYRINGA RETICULATA	JAPANESE TREE LILAC	7' HEIGHT, CLUMP FORM, BALLED AND BURLAPPED	EACH	22	4	18	0	0	0	0	0	0	0	0
MP	MALUS PRAIRIFIRE	PRAIRIFIRE CRABAPPLE	6' HEIGHT, CLUMP FORM, BALLED AND BURLAPPED	EACH	29	6	15	3	0	5	0	0	0	0	0
	EVERGREEN TREES														
PN	PINUS NIGRA	AUSTRIAN PINE	5' BALLED AND BURLAPPED	EACH	50	28	9	3	7	3	0	0	0	0	0
	SHRUBS														
AF	AMOUPHA FRUITCOSA	INDIGO BUSH	CONTAINER GROWN, 3-GALLON	EACH	29	0	0	0	0	29	0	0	0	0	0
FS	FORSYTHIA NORTHERN SUN	NORTHERN SUN BORDER FORSYTHIA	3' HEIGHT, CONTAINER	EACH	390	0	45	0	0	150	195	0	0	0	0
HV	HAMAMELIS VERNALIS	VERNAL WITCH HAZEL	2' HEIGHT, BALLED AND BURLAPPED	EACH	64	0	64	0	0	0	0	0	0	0	0
PA	PEROVSKIA ATRIPLICIFOLIA	RUSSIAN SAGE	PEROVSKIA ATRIPLICIFOLIA	EACH	1080	0	880	200	0	0	0	0	0	0	0
RA	RHUS AROMATICA	FRAGRANT SUMAC	2' WIDTH, CONTAINER	EACH	1038	0	510	0	200	32	296	0	0	0	0
RG	RHUS GLABRA	SMOOTH SUMAC	3' HEIGHT, CONTAINER	EACH	519	0	393	125	0	1	0	0	0	0	0
SPA	SYRINGA MEYERI PALIBIN (DWARF KOREAN LILAC)	DWARF KOREAN LILAC	2' HEIGHT, CONTAINER	EACH	643	0	365	215	63	0	0	0	0	0	0
RS	ARONIA MELANOCARPA	BLACK CHOKEBERRY	2' HEIGHT, CONTAINER	EACH	1396	200	725	435	0	36	0	0	0	0	0
RH	ILEX VERTICILLATA	WINTER RED	3' HEIGHT, CONTAINER	EACH	125	0	0	100	0	25	0	0	0	0	0
RR	ROSA KNOCKOUT	KNOCKOUT ROSE	24" HEIGHT, CONTAINER	EACH	710	0	0	495	215	0	0	0	0	0	0
RRC	ROSA X CHUCKLES	CHUCKLES SHRUB ROSE	24" HEIGHT, CONTAINER	EACH	220	0	220	0	0	0	0	0	0	0	0
	EVERGREEN SHRUBS														
JH	JUNIPERUS HORIZONTALIS HUGHES	HUGHES CREEPING JUNIPER	18" WIDTH, CONTAINER	EACH	691	0	0	260	47	94	290	0	0	0	0
JC	JUNIPERUS CHINENSIS	KALLAYS COMPACTA	18" WIDTH, CONTAINER	EACH	1031	0	647	215	82	87	0	0	0	0	0
	VINES														
PQ	PARTHENOCISSUS QUINQUEFOLIA	VIRGINIA CREEPER	1-GALLON POT	EACH	96	0	0	0	24	40	32	0	0	0	0
JT	PARTHENOCISSUS TRICUSPIDATA	BOSTON IVY	1-GALLON POT	EACH	12	0	0	0	0	12	0	0	0	0	0
CT	CLEMATIS MAXIMOWICZIANA	SWEET AUTUMN CLEMATIS	1-GALLON POT	EACH	34	0	0	0	34	0	0	0	0	0	0
CR	CAMPSIS RADICAN	MINNESOTA TRUMPET VINE	1-GALLON POT	EACH	37	0	0	0	21	16	0	0	0	0	0
LS	LONICERA SEMPERVIRENS	HONEYSUCKLE	1-GALLON POT	EACH	303	0	0	0	0	268	35	0	0	0	0
	PERENNIALS AND GROUNDCOVERS														
	PERENNIAL PLANTS, FOR SUN	PERENNIAL PLANTS, FOR SUN	1/2-GALLON POT, 12" O.C.	UNIT	140.73										
	INTERSEEDING, CLASS 4A			HA	0.59	0.05	0.47	0.07	0	0	0	0	0	0	0
	INTERSEEDING, CLASS 5			HA	0.20	0.05	0.11	0.04	0	0	0	0	0	0	0
	INTERSEEDING, CLASS 2A	(SEE NOTE 1)		HA	2.0	0	0	0	0	0	0	0	0	0	0
	MOWING	11 APPLICATIONS		HA	22.05	4.04	10.66	2.05	1.88	1.07	2.35	0	0	0	0
	MULCH, METHOD 2	(SEE NOTE 1)		HA	2.0	0	0	0	0	0	0	0	0	0	0

LEGEND:

- L1 LANDSCAPE LAYOUT-1
- L2 LANDSCAPE LAYOUT-2
- L3 LANDSCAPE LAYOUT-3
- L4 LANDSCAPE LAYOUT-4
- L5 LANDSCAPE LAYOUT-5
- L6 LANDSCAPE LAYOUT-6

NOTE 1: INTERSEEDING, CLASS 2A AND MULCH, METHOD 2 LOCATIONS WILL BE SELECTED BY THE RESIDENT ENGINEER BASED ON CONDITIONS OF EXISTING TURF.

REVISIONS		ILLINOIS DEPARTMENT OF TRANSPORTATION FAI ROUTE 74 (I-74) SCHEDULE OF LANDSCAPE ITEMS
NAME	DATE	
		DRAWN BY: KC/DL CHECKED BY: JB DATE: 07/16/2004
PS&E RJD	04/18/07	
FINAL PLAN	05/11/04	
PREFINAL PLAN	03/01/04	
PRELIMINARY	11/17/03	

TEMPORARY EROSION CONTROL NOTES

- DURING LANDSCAPE CONSTRUCTION, AREAS OUTSIDE THE CONSTRUCTION SLOPE LIMITS, SHALL BE PROTECTED FROM DAMAGING EFFECTS OF CONSTRUCTION. THE CONTRACTOR SHALL NOT USE THIS AREA FOR STAGING, (EXCEPT AS DESIGNATED ON THE PLANS OR DIRECTED BY THE ENGINEER), PARKING OF VEHICLES OR CONSTRUCTION EQUIPMENT, STORAGE OF MATERIALS, OR OTHER CONSTRUCTION RELATED ACTIVITIES.
- WITHIN THE CONSTRUCTION ZONE, CRITICAL AREAS WHICH HAVE HIGH FLOWS OF WATER AS DETERMINED BY THE ENGINEER SHALL REMAIN UNDISTURBED UNTIL FULL SCALE CONSTRUCTION IS UNDERWAY TO PREVENT UNNECESSARY SOIL EROSION.
- EARTH STOCKPILES SHALL BE TEMPORARILY SEEDED IF THEY ARE TO REMAIN UNUSED FOR MORE THAN FOURTEEN DAYS.
- CONSTRUCTION EQUIPMENT SHALL BE STORED AND FUELED ONLY AT DESIGNATED LOCATIONS. ALL NECESSARY MEASURES SHALL BE TAKEN TO CONTAIN ANY FUEL OR POLLUTION RUN-OFF IN COMPLIANCE WITH EPA WATER QUALITY REGULATIONS. LEAKING EQUIPMENT OR SUPPLIES SHALL BE IMMEDIATELY REPAIRED OR REMOVED FROM THE SITE.
- THE RESIDENT ENGINEER SHALL INSPECT THE PROJECT ON A REGULAR BASIS TO DETERMINE THAT EROSION CONTROL EFFORTS ARE IN PLACE AND EFFECTIVE AND IF OTHER EROSION CONTROL WORK IS NECESSARY.
- SEDIMENT COLLECTED DURING CONSTRUCTION BY THE VARIOUS TEMPORARY EROSION CONTROL SYSTEM SHALL BE DISPOSED OFF FROM THE SITE ON A REGULAR BASIS AS DIRECTED BY THE ENGINEER. PERIMETER BARRIER SHALL HAVE SEDIMENT REMOVED WHEN IT REACHES 50% OF THE HEIGHT OF THE CONTROL DEVICE. THE COST OF MAINTAINING AND CLEANING THE EROSION AND SEDIMENT CONTROL ITEMS SHALL BE INCLUDED IN THE RESPECTIVE PAY ITEMS. NO ADDITIONAL COMPENSATION WILL BE ALLOWED.
- TEMPORARY EROSION CONTROL SYSTEMS SHALL BE REMOVED AS DIRECTED BY THE ENGINEER AFTER EVERY USE IF NO LONGER NEEDED OR NO LONGER FUNCTIONING. THE COST OF THIS REMOVAL SHALL BE INCLUDED IN THE UNIT BID PRICE FOR THE TEMPORARY EROSION CONTROL SYSTEM. NO ADDITIONAL COMPENSATION WILL BE ALLOWED.
- PLACEMENT AND MAINTENANCE OF TEMPORARY EROSION CONTROL SYSTEMS WILL BE UTILIZED USING PERIMETER EROSION BARRIER THROUGHOUT THE LANDSCAPE WORK ZONE AS SOON AS POSSIBLE TO STABILIZE EXPOSED SOILS, AS APPROVED, BY THE ENGINEER.
- EROSION CONTROL DEVICES SHALL BE IN PLACE AND APPROVED BY THE ENGINEER AS TO PROPER PLACEMENT AND INSTALLATION PRIOR TO BEGINNING OTHER WORK AT EACH SITE.
- THIS WORK SHALL BE COMPLETED IN ACCORDANCE WITH SECTION 280, TEMPORARY EROSION CONTROL, OF THE STANDARD SPECIFICATIONS.
- THE CONTRACTOR SHALL PERFORM ALL WORK AS DIRECTED BY THE ENGINEER AND AS SHOWN IN STANDARDS 280001.
- TEMPORARY EROSION CONTROL SYSTEMS ARE NOTED IN THE TEMPORARY EROSION CONTROL SCHEDULES. THE SCHEDULE MAY INCLUDE THE FOLLOWING:
 TEMPORARY DITCH CHECKS
 INLET AND PIPE PROTECTION
 PERIMETER EROSION BARRIER

PRIOR TO CONSTRUCTION:

- PRIOR TO PERFORMING LANDSCAPE ACTIVITIES RESULTING IN LAND DISTURBANCE, THE CONTRACTOR SHALL INSTALL ITEMS INTENDED TO PREVENT SEDIMENT FROM LEAVING THE CONSTRUCTION SITE. THE ITEMS MAY INCLUDE THE FOLLOWING TEMPORARY EROSION CONTROL SYSTEMS:
 TEMPORARY DITCH CHECKS
 INLET AND PIPE PROTECTION
 PERIMETER EROSION BARRIER

DURING CONSTRUCTION:

- DURING CONSTRUCTION THE CONTRACTOR SHALL:
- CLEAN UP AND GRADE THE WORK AREA TO ELIMINATE CONCENTRATION OF RUNOFF.
- INSTALL TEMPORARY DITCH CHECKS AT LOCATIONS SPECIFIED IN THE SCHEDULES OR AS DIRECTED BY THE RESIDENT ENGINEER.
- INSTALL INLET PROTECTION AS SPECIFIED IN THE SCHEDULES OR AS DIRECTED BY THE RESIDENT ENGINEER FOR STORM SEWERS OR CULVERTS AS THEY ARE INSTALLED AND AS WORK PROCEEDS.
- COVER THE OPEN ENDS OF PIPES IN TRENCHES AT THE CLOSE OF EACH WORKING DAY.
- MAINTAIN OR REPLACE (IF SPECIFIED BY THE RESIDENT ENGINEER) EROSION CONTROL ITEMS.

F.A.I. RTE.	SECTION	COUNTY	TOTAL SHEETS	SHEET NO.
74	72(7,8,9,9-1)LS	PEORIA	19	8
STA. _____ TO STA. _____		FED. ROAD DIST. NO. 4 ILLINOIS FED. AID PROJECT		

PERIMETER EROSION BARRIER		
LOCATION	PERIMETER EROSION BARRIER	METER
W.B. I-74		
LT 26.85 m STA 149+925.00 TO LT 20.19 m STA 150+000.00		75
LT 48.87 m STA 150+100.00 TO LT 26.37 m STA 150+205.56		106
	SUBTOTAL	181
RAMP F-4		
RT 5.14 m STA 10+200.51 TO RT 11.12 m STA 10+415.00		214
	SUBTOTAL	214
RAMP F-6		
RT 4.875 m STA 20+025.00 TO RT 4.1 m STA 20+041.42		16
LT 7.6 m STA 20+050.00 TO LT 7.6 m STA 20+125.00		75
RT 5 m STA 20+275.00 TO RT 5 m STA 20+395.07		120
	SUBTOTAL	211
N.B. KNOXVILLE AVENUE		
LT STA. 20+583.030 TO LT STA. 20+650.000		254
RT 8.096 m STA 20+350.00 TO RT 10.54 m STA 20+600.00		250
RT STA. 20+615.717 TO RT STA. 20+650.000		35
	SUBTOTAL	539
	GRAND TOTAL	1145

INLET AND PIPE PROTECTION				
LOCATION	EACH			
W.B. I-74				
STA. 148+941.731 14.017 m LT				1
STA. 149+073.664 16.082 m LT				1
STA. 149+150.000 15.155 m LT				1
STA. 149+171.491 14.685 m LT				1
STA. 150+307.128 15.114 m LT.				1
STA. 150+321.791 15.644 m LT.				1
	SUBTOTAL			6
RAMP E-2				
STA. 20+026.086 53.625 m LT				1
STA. 20+068.035 19.399 m LT				1
STA. 20+274.989 6.639 m LT				1
STA. 20+323.000 6.691 m LT				1
STA. 20+336.298 RT				1
	SUBTOTAL			5
S.B. KNOXVILLE AVENUE				
STA. 1+156.854 15.408 m LT				1
	SUBTOTAL			1
	GRAND TOTAL			12

TEMPORARY DITCH CHECKS				
LOCATION	EACH			
W.B. I-74				
STA. 148+893.105 13.34 m LT				1
STA. 148+906.474 13.34 m LT				1
STA. 148+918.762 14.14 m LT				1
STA. 148+931.668 14.45 m LT				1
STA. 150+305.663 14.42 m LT.				1
STA. 150+331.085 15.70 m LT.				1
STA. 150+345.722 15.22 m LT.				1
	SUBTOTAL			7
RAMP E-2				
STA 20+040.000 21.55 m LT				1
STA 20+060.000 21.55 m LT				1
STA 20+083.000 17.79 m LT				1
STA 20+106.000 15.32 m LT				1
STA 20+129.000 12.83 m LT				1
STA 20+152.000 11.91 m LT				1
	SUBTOTAL			6
S.B. KNOXVILLE AVENUE				
STA. 1+165.196 11.82 m LT				1
STA. 1+174.090 9.739 m LT				1
	SUBTOTAL			2
	TOTAL			15
(X 3 INSTALLATIONS)	GRAND TOTAL			45

REVISIONS		ILLINOIS DEPARTMENT OF TRANSPORTATION FAI ROUTE 74 (I-74)
NAME	DATE	
		TEMPORARY EROSION CONTROL NOTES AND SCHEDULES
FINAL PLAN	05/11/04	DRAWN BY: KC/DL CHECKED BY: JB
PREFINAL PLAN	03/01/04	
PRELIMINARY	11/17/03	
		DATE: 07/16/2004

F.A.I. SECTION	COUNTY	TOTAL SHEETS	SHEET NO.
74 72(7,8,9,9-1)LS	PEORIA	19	9
STA. TO STA.		FED. ROAD DIST. NO. 4 ILLINOIS FED. AID PROJECT	

MOBILIZATION	
Jobsite	1 Lump Sum

TRAFFIC CONTROL AND PROTECTION	
Jobsite	1 Lump Sum

SUPPLEMENTAL WATERING				
Location	No. of Plants	Rate liters/plant	No. of Waterings	Units
Trees	194	38	5	36.86
Shrubs	7956	11	5	437.58
Perennials	1332 SQM	15 L/SQM	14	279.72
Vines	482	11	5	26.51
			Total	781

CARE OF PLANT MATERIALS			
Location	No. of Plants	No. of Care Cycles	Each
Tree Care	194	2	388
Shrub Care	7956	2	15912
Vine Care	482	2	964
Perennial Plant Care	1332 SQM	8	10653 SQM

Note: Perennial Plant Care will be measured by SQM.

WEED CONTROL, PRE-EMERGENT GRANULAR HERBICIDE				
Location	Appl. Rate (kg/SQM)	Area (SQ M)	No. of Appl.	Kilograms
Perennial Plant Beds	0.01	1332	3	40

FERTILIZER NUTRIENTS				
Location	Appl. Rate (kg/SQM)	Area (SQ M)	No. of Appl.	Kilograms
Perennial Plant Beds				
Nitrogen Fert. Nutr.	0.01	1332	1	13
Phosphorus Fert. Nutr.	0.006	1332	1	8
Potassium Fert. Nutr.	0.004	1332	1	5

PERENNIAL PLANTS, FOR SUN, 1/2 Gallon					
	Totals By Layout Sheet				Totals by Plant Name
	Sheet 1	Sheet 2	Sheet 3	Sheet 6	
Forbs					
Aster Laevis -Smooth Aster	0	0	0	0	0
Aster Novae angliae-New England Aster	0	0	0	0	0
Baptisia Leucantha - White Indigo	0	400	570	0	970
Echinacea Purpurea - Purple Coneflower	875		560	0	1435
Eupatorium Purpureum- Joe Pye Weed	500	570	0	0	1070
Helianthus Strumosus- Woodland Sunflower	0	0	500	0	500
Monarda Fistulosa- Wild Bergamont	0	0	0	0	0
Physostegia Virginiana-Obedient Plant	0	570	0	0	570
Rudbeckia Goldstrum- Goldstrum Brown Eyed Susan	303	993	0	0	1296
Silphium Integrefolium- Rosin Weed	875	0	370	0	1245
Silphium Laciniatum-Compass Plant		992	500	0	1492
Silphium Terebinthinaceum- Prairie Dock	300	820	745	0	1865
Solidago Speciosa - Showy Goldenrod	0	0	0	0	0
Vernonia Fasticulata- Ironweed	300	0	0	0	300
Veronicastrum Virginicum-Culvers Root	200	0	0	0	200
Grasses					
Andorpogon Scoparius- Little Bluestem	0	0	540	0	540
Sorghastrum Nutans-Indiangrass	0	400	260	0	660
Sporobulus Heterolepsis-Dropseed	0	720	1210	0	1930
Sub Total	3353	5465	5255	0	
Grand Total					14073 =140.73 UNITS

NOTE: PERENNIAL PLANTS TO BE PLANTED IN LARGE GROUPINGS. LAYOUT TO BE DETERMINED BY LANDSCAPE ARCHITECT PRIOR TO PLANTING.

REVISIONS		ILLINOIS DEPARTMENT OF TRANSPORTATION FAI ROUTE 74 (I-74)
NAME	DATE	
PS&E RJD	04/18/07	SCHEDULE OF QUANTITIES
FINAL PLAN	05/11/04	
PREFINAL PLAN	03/01/04	
PRELIMINARY	11/17/03	
DATE: 07/16/2004		DRAWN BY: KC/DL
		CHECKED BY: JB

CALENDAR OF CONSTRUCTION:

F.A.I. NO.	SECTION	COUNTY	TOTAL SHEETS	SHEET NO.
74	72(7,8,9,9-1)LS	PEORIA	19	10
STA. _____		TO STA. _____		
FED. ROAD DIST. NO. 4		ILLINOIS	FED. AID PROJECT	

	YEAR	WORK DATES		CONSTRUCTION WORK	ESTABLISHMENT WORK	
		FROM	TO			
Phase I	2007	1-Aug	1-Nov	Class 2A Interseeding		
	2007	15-Oct	1-Dec	Class 4A and 5 Seeding		
	2007	1-Nov	Frozen soil	Install fall woody plants		
	2008	15-Apr	1-May		Mow turf areas to a turf height of 3 inches	
	2008	1-Apr	15-June	Class 2A Interseeding		
	2008	Thawed soil	30-Apr	Install evergreens		
	2008	Thawed soil	31-May	Installation of all woody plants		
	2008	1-May	30-May	Period of establishment plant care required for woody plants (weeding, watering or other work) which is necessary to maintain health and satisfactory appearance of the planting is included in the cost of the contract as per Article 253.14 and 253.15.		
	2008	1-May	15-June	Planting of Perennial Plants. See Article 254.09 for period of establishment.		
	2008	15-May	30-June	Class 4A and 5 Seeding		
			1-June	Certification to the bureau of operations that all woody plants have been installed and are in a live healthy condition and eligible for a Sept. 2008 period of establishment inspection.		
			1-Jun	15-Jun	Mow turf areas to a turf height of 3 inches	
			1-Jun	30-Jun	Period of establishment plant care required for woody plants (weeding, watering or other work) which is necessary to maintain healthy and satisfactory appearance of the planting is included in the cost of the contract as per sect. 253.14 & 253.15.	
	Phase II	2008	1-Jul	15-Jul		Mow turf areas to a turf height of 3 inches
1-Jul			31-Jul	Period of establishment plant care required for woody plants (weeding, watering or other work) which is necessary to maintain healthy and satisfactory appearance of the planting is included in the cost of the contract.		
1-July			30-Sept		Perennial plant care every 30 days (3 cycles)	
1-July			30-Oct		Perennial plant supplemental watering every 30 days (4 cycles)	
1-Aug			15-Aug		Mow turf areas to a turf height of 3 inches	
1-Aug			31-Aug	Period of establishment plant care required for woody plants (weeding, watering or other work) which is necessary to maintain health and satisfactory appearance of the planting is included in the cost of the contract.		
1-Sep			30-Sep	Period of establishment plant care required for woody plants (weeding, watering or other work) which is necessary to maintain health and satisfactory appearance of the planting is included in the cost of the contract.		
1-Sept			30-Sep	Period of establishment inspection will be performed by IDOT.		
		1-Oct	15-Oct		Mow turf areas to a turf height of 3 inches	
Phase III	2009	Thawed soil	15-May	Installation of all required replacement woody plants, and all required clean up of Woody plants shall be completed by this date.		
		1-May	15-May		Mow turf areas to a turf height of 3 inches	
		1-May	30-Sep		Perennial plant care every 30 days (5 cycles) Inspection for payment on May 31, June 30, July 31, August 30 and September 31.	
		1-May	30-May		Supplemental watering of woody plants and perennial plants unless deleted by the Engineer.	
		1-Jun	15-Jun		Mow turf areas to a turf height of 3 inches	
		1-Jun	30-Jun		Supplemental watering of woody plants and perennial plants unless deleted by the Engineer.	
		1-Jul	15-Jul		Mow turf areas to a turf height of 3 inches	
			17-Jul		Inspection date for all woody plant care.	
		1-Jun	30-Jun		(Woody plant care work cycle must be complete and acceptable on the inspection date.)	
		1-Jul	31-Jul		Supplemental watering of woody plants and perennial plants unless deleted by the Engineer.	
Phase IV	2009	1-Aug	15-Aug		Mow turf areas to a turf height of 3 inches	
		1-Aug	31-Aug		Supplemental watering of woody plants and perennial plants unless deleted by the Engineer.	
		1-Sep	15-Sep		Mow turf areas to a turf height of 3 inches	
			18-Sep		(Woody plant care work cycle must be complete and acceptable on the inspection date.)	
		1-Sep	30-Sep		Supplemental watering of woody plants and perennial plants unless deleted by the Engineer.	
		1-Oct	15-Oct		Mow turf areas to a turf height of 3 inches	

REVISIONS	
NAME	DATE
PS&E RJD	04/18/07
FINAL PLAN	05/11/04
PREFINAL PLAN	03/01/04
PRELIMINARY	11/17/03

ILLINOIS DEPARTMENT OF TRANSPORTATION
FAI ROUTE 74 (I-74)

CALENDAR OF CONSTRUCTION

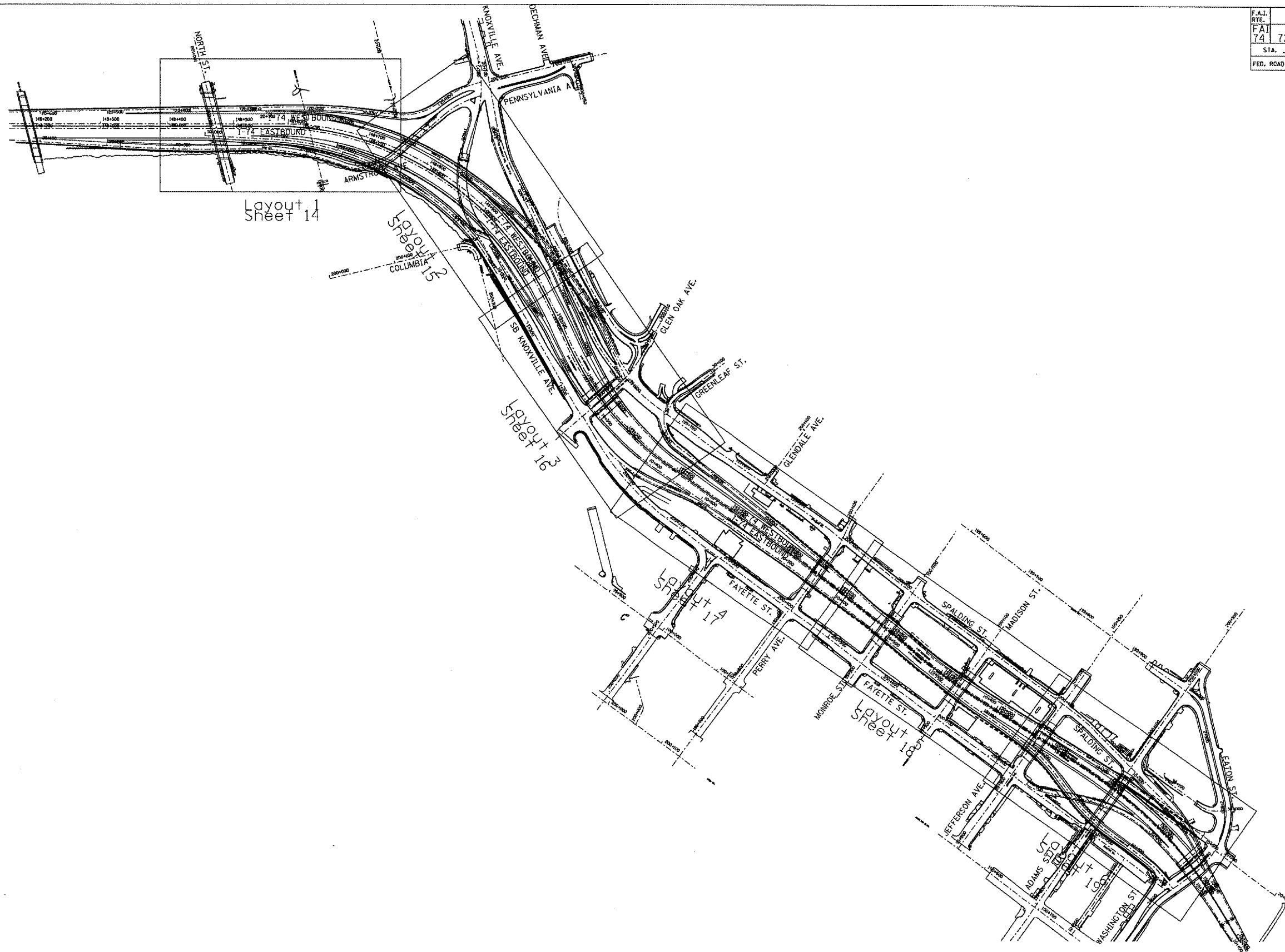
DATE: 7/31/2007
DRAWN BY: KC/DL
CHECKED BY: JB

CONTRACT NO. 68367

F.A.I. RTE.	SECTION	COUNTY	TOTAL SHEETS	SHEET NO.
74	72(7,8,9,9-1)LS	PEORIA	19	11
STA.		TO STA.		
FED. ROAD DIST. NO. 4		ILLINOIS		FED. AID PROJECT



SCALE= 1:3000m



REVISIONS	
NAME	DATE
PS&E RJD	04/18/07
FINAL PLAN	05/11/04
PREFINAL PLAN	03/01/04
PRELIMINARY	11/17/03

ILLINOIS DEPARTMENT OF TRANSPORTATION
 FAI ROUTE 74 (I-74)

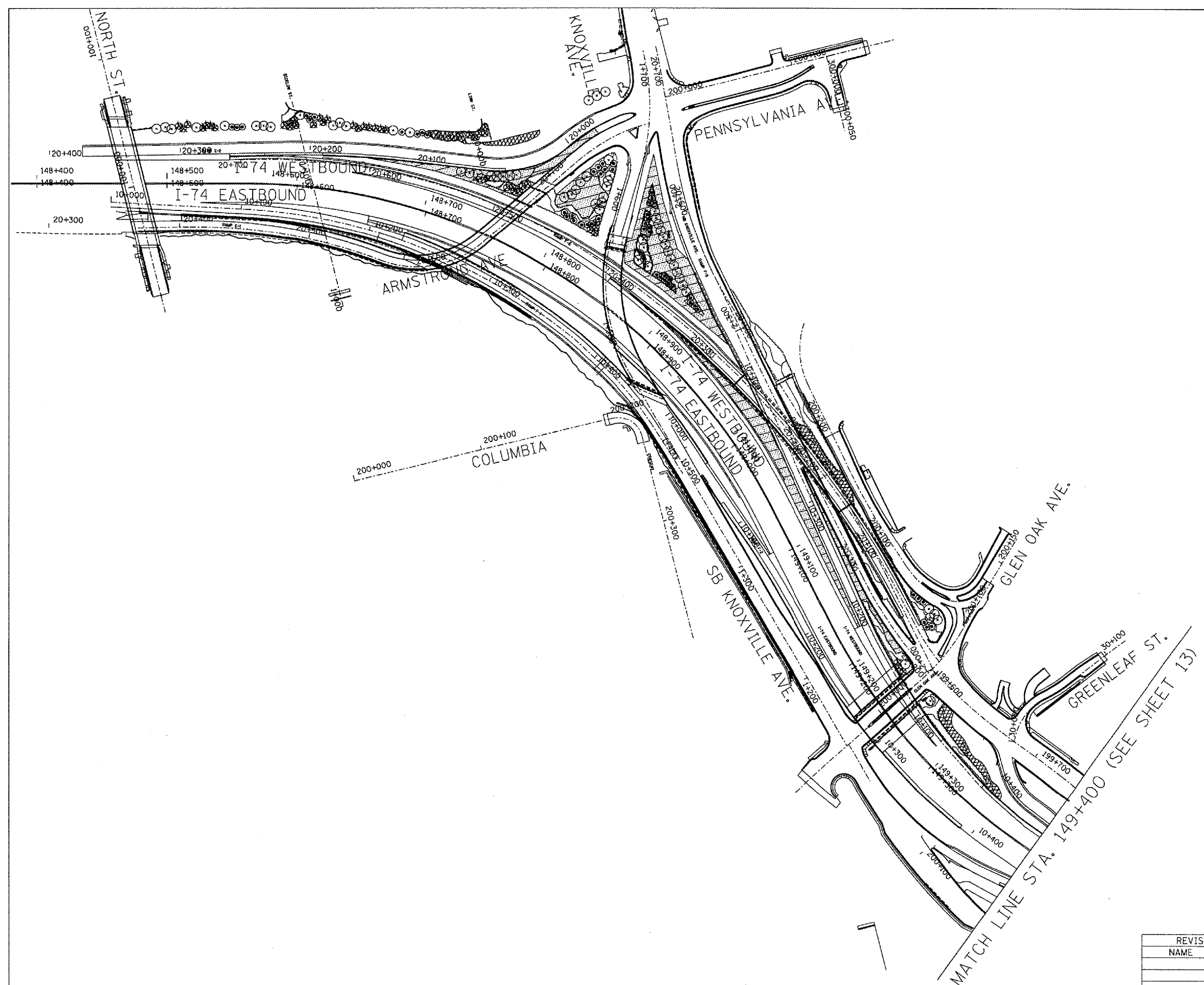
 OVERALL SCHEMATIC PLAN

 DATE: 07/16/2004
 DRAWN BY: KC/DL
 CHECKED BY: JB

F.A.I. RTE.	SECTION	COUNTY	TOTAL SHEETS	SHEET NO.
74	72(7,8,9,9-1)LS	PEORIA	19	12
STA.		TO STA.		
FED. ROAD DIST. NO. 4		ILLINOIS	FED. AID PROJECT	



SCALE= 1:1500m



REVISIONS	
NAME	DATE
PS&E RJD	04/18/07
FINAL PLAN	05/11/04
PREFINAL PLAN	03/01/04
PRELIMINARY	11/17/03

ILLINOIS DEPARTMENT OF TRANSPORTATION
 FAI ROUTE 74 (I-74)

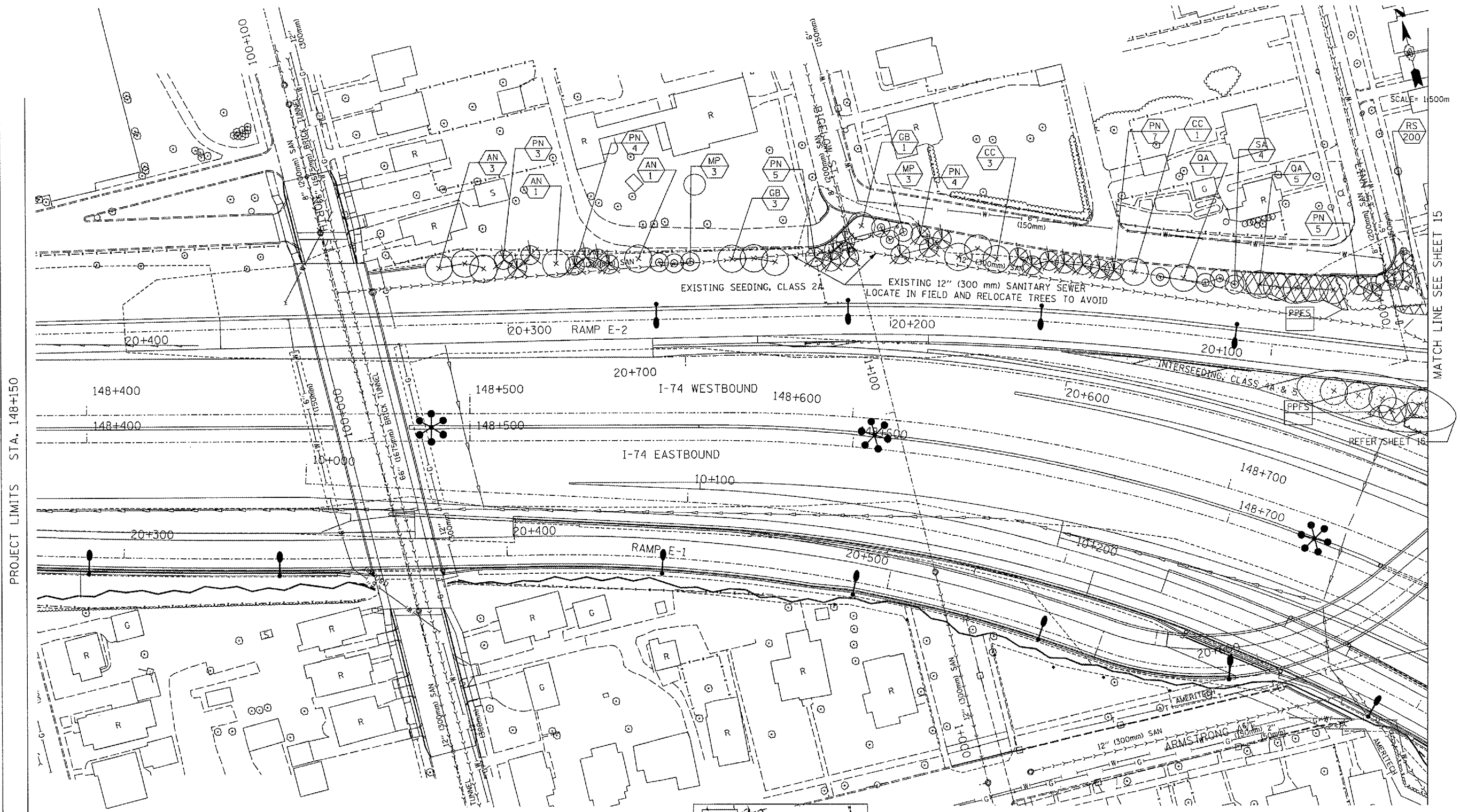
LANDSCAPE LOCATION PLAN 1

DATE: 07/16/2004

DRAWN BY: KC/DL
 CHECKED BY: JB

MATCH LINE STA. 149+400 (SEE SHEET 13)

F.A.I. RTE.	SECTION	COUNTY	TOTAL SHEETS	SHEET NO.
74	72(7,8,9-1)LS	PEORIA	19	14
STA.	TO STA.			
FED. ROAD DIST. NO. 4	ILLINOIS	FED. AID PROJECT		



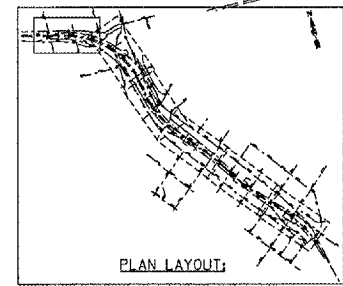
PROJECT LIMITS STA. 148+150

MATCH LINE SEE SHEET 15

REFER SHEET 15

LEGEND

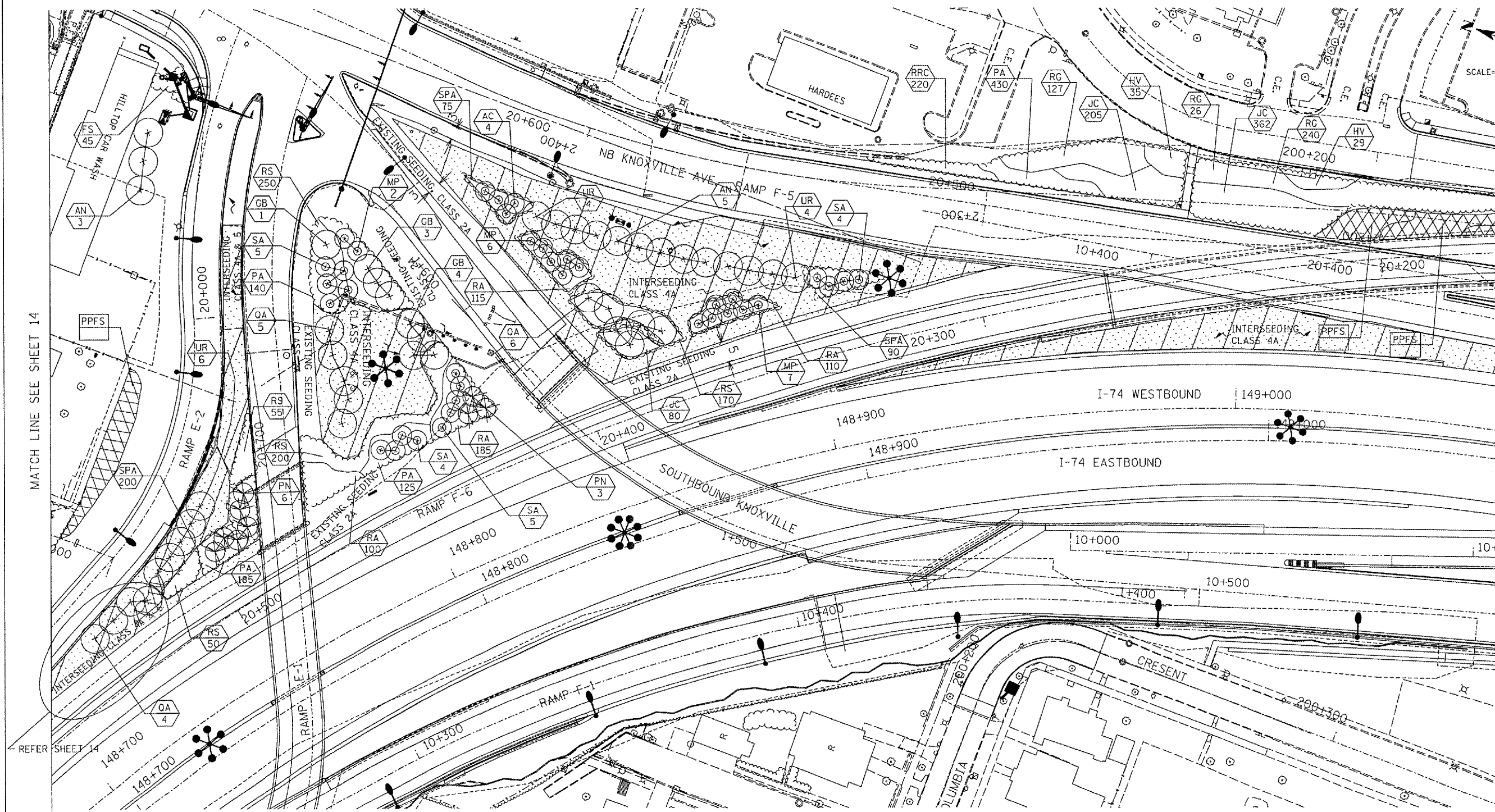
- VINES ON SOUND/RETAINING WALL
- SHRUBS
- PROPOSED EVERGREEN TREE
- PROPOSED SMALL ORNAMENTAL TREE
- PROPOSED SHADE TREE (5' DIA. MULCH SAUCER-TYP. -FOR ALL TREES & SHRUBS)
- INTERSEEDING, CLASS 4A AND/OR 5
- PERENNIAL PLANTS, FOR SUN
- PPFS PROPOSED PERENNIAL PLANTS, FOR SUN (REFER TO SHEET NO. 9)
- PROPOSED PLANT KEY (REFER SHEET NO.4)
- PROPOSED QUANTITY OF SPECIFIED PLANT
- PROPOSED IRRIGATION CONNECTION



REVISIONS	
NAME	DATE

ILLINOIS DEPARTMENT OF TRANSPORTATION
 FAI ROUTE 74 (I-74)
LANDSCAPE - LAYOUT 1
 DATE: 07/16/2004
 DRAWN BY: KC/DL
 CHECKED BY: JB

F.A.I. R.T.E.	SECTION	COUNTY	TOTAL SHEETS	SHEET NO.
74	72(7,8,9,9-1)LS	PEORIA	19	15
STA.	TO STA.			
FED. ROAD DIST. NO. 4	ILLINOIS	FED. AID PROJECT		

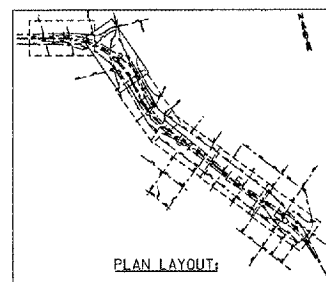


MATCH LINE SEE SHEET 14

MATCH LINE SEE SHEET 16

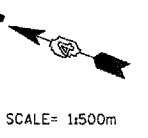
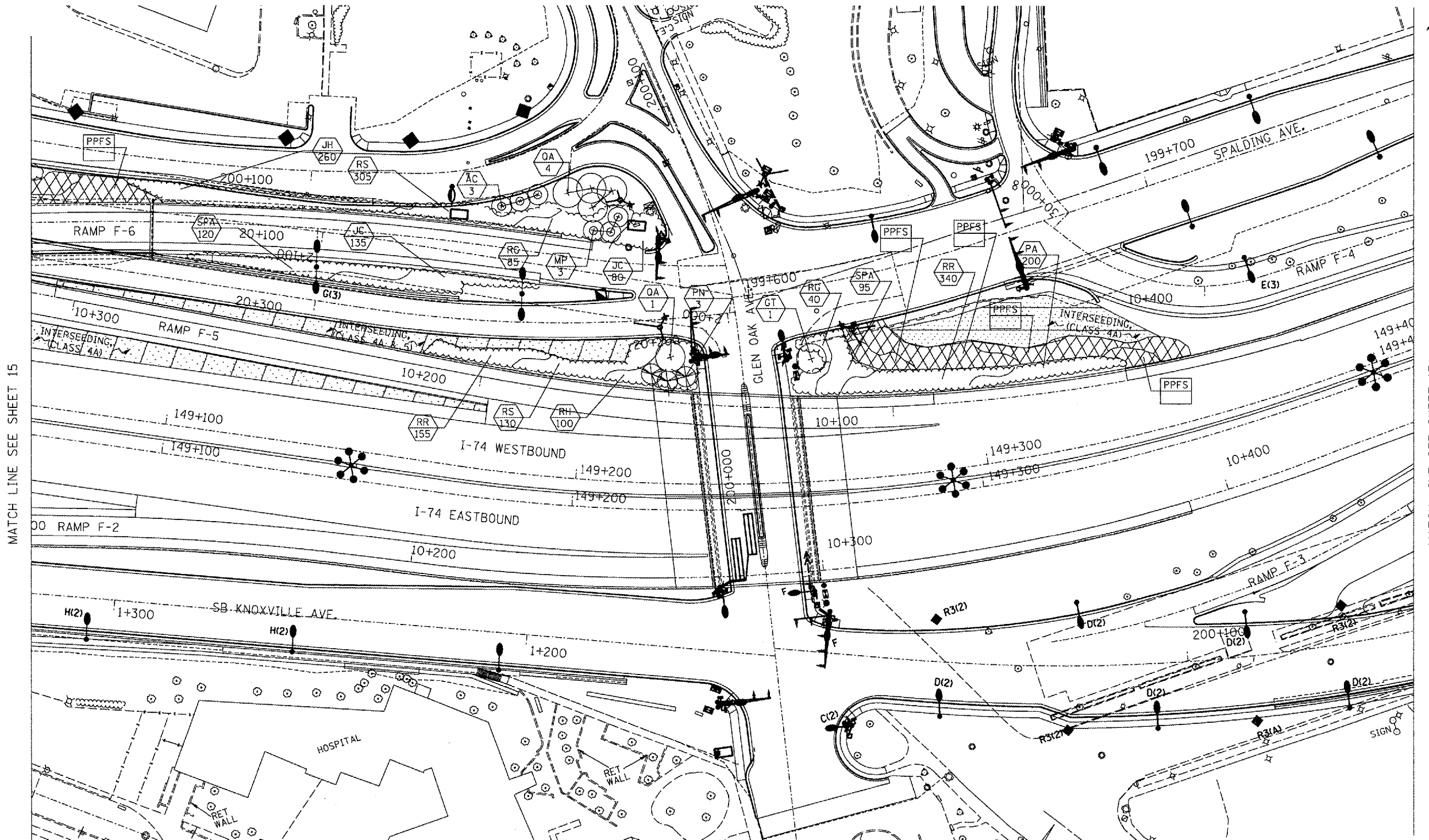
LEGEND

- VINES ON SOUND/RETAINING WALL
- SHRUBS
- PROPOSED EVERGREEN TREE
- PROPOSED SMALL ORNAMENTAL TREE
- PROPOSED SHADE TREE (5' DIA. MULCH SAUCER-TYP. -FOR ALL TREES & SHRUBS)
- INTERSEEDING, CLASS 4A AND/OR 5
- PERENNIAL PLANTS, FOR SUN
- PROPOSED PERENNIAL PLANTS, FOR SUN (REFER TO SHEET NO. 9)
- PROPOSED PLANT KEY (REFER SHEET NO.4)
- PROPOSED QUANTITY OF SPECIFIED PLANT
- PROPOSED IRRIGATION CONNECTION



REVISIONS		ILLINOIS DEPARTMENT OF TRANSPORTATION FAI ROUTE 74 (I-74) LANDSCAPE - LAYOUT 2
NAME	DATE	
		DATE: 07/16/2004 DRAWN BY: KC/DL CHECKED BY: JB
FINAL PLAN	05/11/04	DATE: 07/16/2004 DRAWN BY: KC/DL CHECKED BY: JB
PRELIMINARY PLAN	03/01/04	
PRELIMINARY	11/17/03	

F.A.I. RTE.	SECTION	COUNTY	TOTAL SHEETS	SHEET NO.
74	72(7,8,9,9-1)LS	PEORIA	19	16
STA. _____ TO STA. _____				
FED. ROAD DIST. NO. 4		ILLINOIS	FED. AID PROJECT	

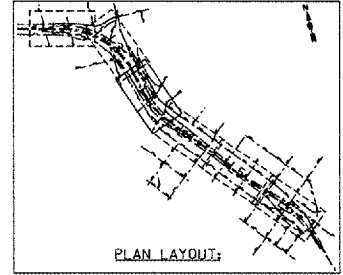


MATCH LINE SEE SHEET 15

MATCH LINE SEE SHEET 17

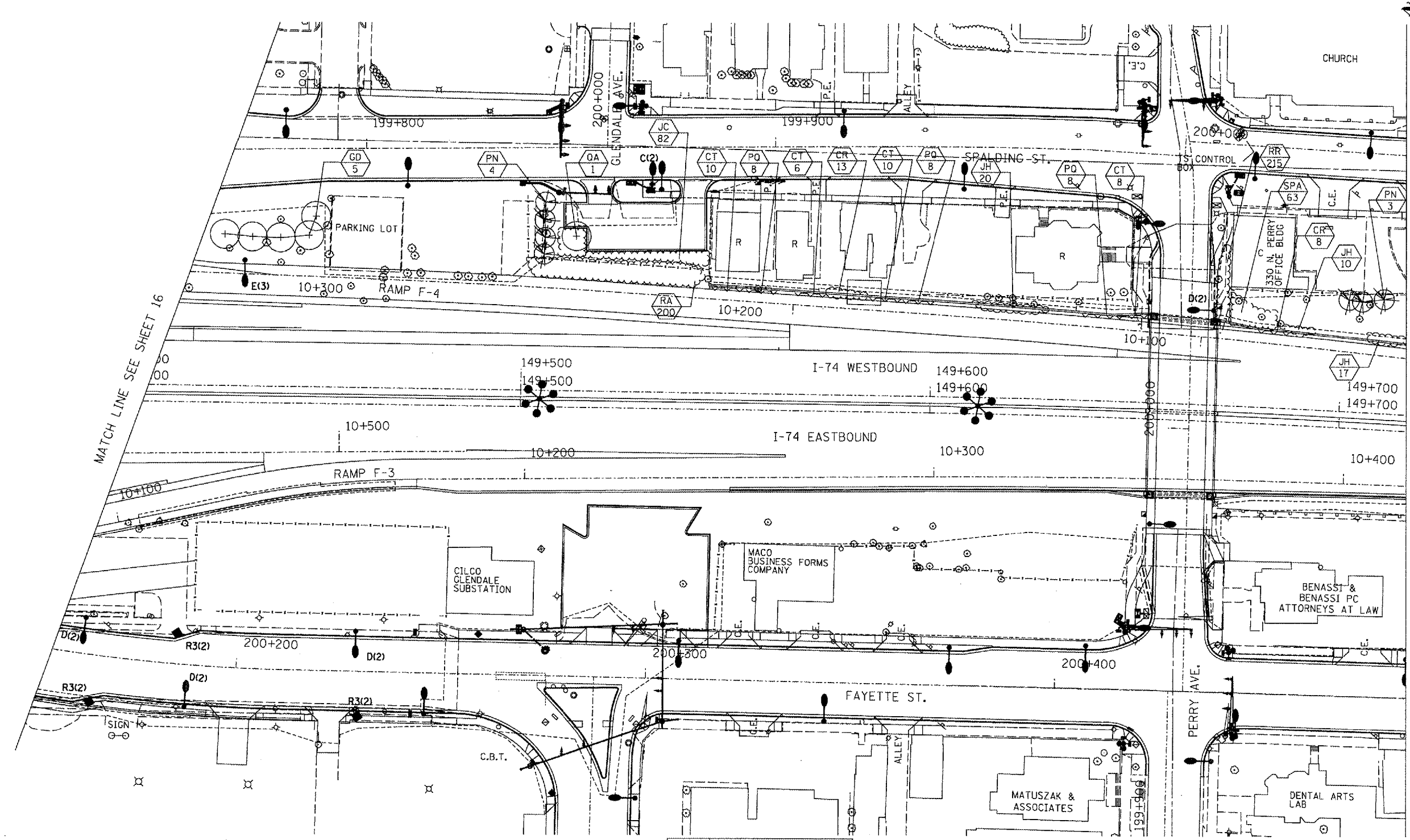
LEGEND

- VINES ON SOUND/RETAINING WALL
- SHRUBS
- PROPOSED EVERGREEN TREE
- PROPOSED SMALL ORNAMENTAL TREE
- PROPOSED SHADE TREE (5' DIA. MULCH SAUCER-TYP. -FOR ALL TREES & SHRUBS)
- INTERSEEDING, CLASS 4A AND/OR 5
- PERENNIAL PLANTS, FOR SUN
- PROPOSED PERENNIAL PLANTS, FOR SUN (REFER TO SHEET NO. 9)
- PROPOSED PLANT KEY (REFER SHEET NO.4) PROPOSED QUANTITY OF SPECIFIED PLANT
- PROPOSED IRRIGATION CONNECTION



REVISIONS		ILLINOIS DEPARTMENT OF TRANSPORTATION FAI ROUTE 74 (I-74) LANDSCAPE - LAYOUT 3
NAME	DATE	
		DATE: 07/16/2004 DRAWN BY: KC/DL CHECKED BY: JB

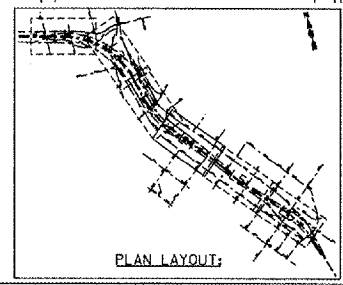
F.A.I. RTE.	SECTION	COUNTY	TOTAL SHEETS	SHEET NO.
74	72(7,8,9,9-1)LS	PEORIA	19	17
STA. _____ TO STA. _____		FED. ROAD DIST. NO. 4 ILLINOIS FED. AID PROJECT		



MATCH LINE SEE SHEET 16

MATCH LINE SEE SHEET 18

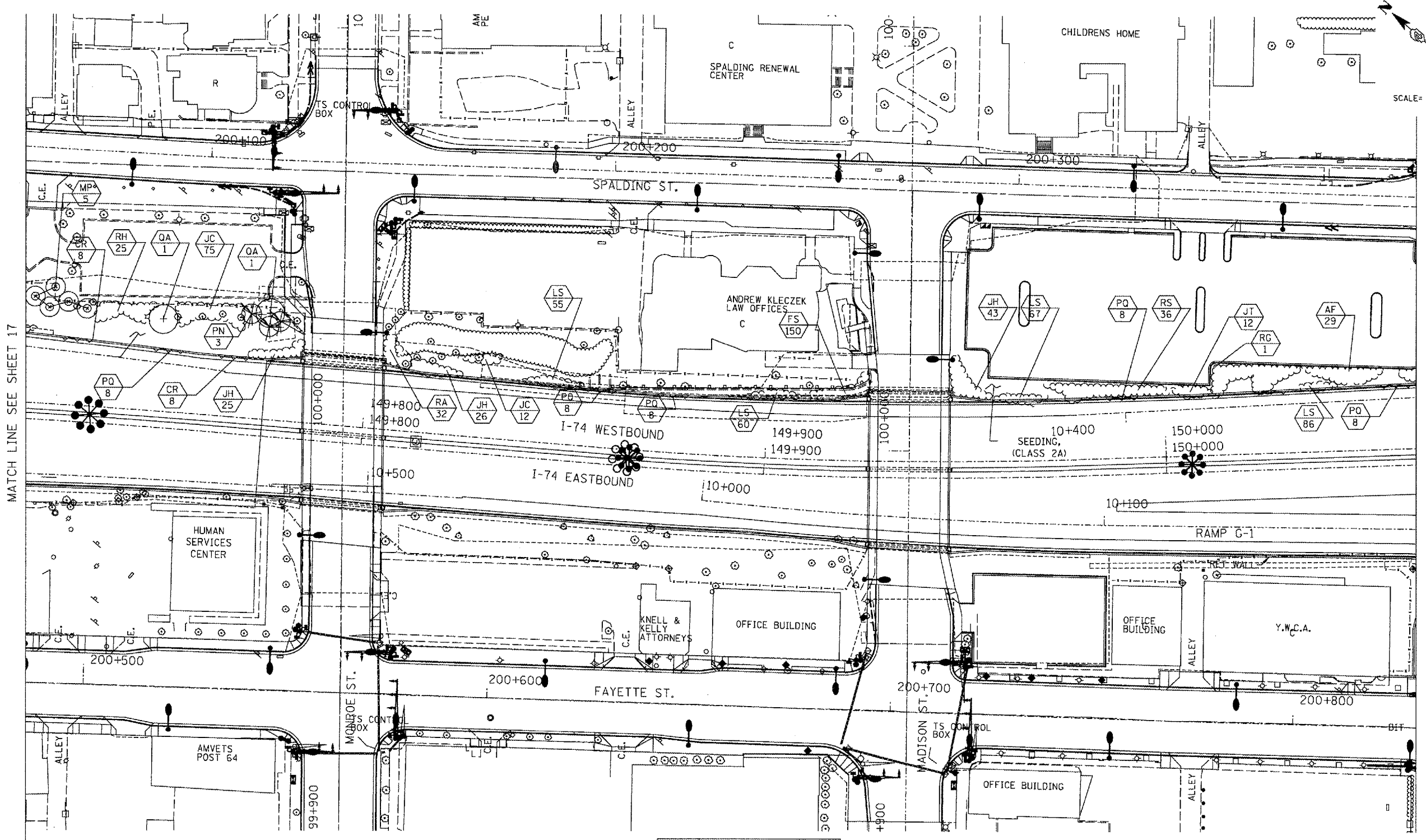
- LEGEND**
- VINES ON SOUND/RETAINING WALL
 - SHRUBS
 - PROPOSED EVERGREEN TREE
 - PROPOSED SMALL ORNAMENTAL TREE
 - PROPOSED SHADE TREE (5' DIA. MULCH SAUCER-TYP. -FOR ALL TREES & SHRUBS)
 - INTERSEEDING, CLASS 4A AND/OR 5
 - PERENNIAL PLANTS, FOR SUN
 - PROPOSED PERENNIAL PLANTS, FOR SUN (REFER TO SHEET NO. 9)
 - PROPOSED PLANT KEY (REFER SHEET NO.4) PROPOSED QUANTITY OF SPECIFIED PLANT
 - PROPOSED IRRIGATION CONNECTION



REVISIONS	
NAME	DATE

ILLINOIS DEPARTMENT OF TRANSPORTATION
 FAI ROUTE 74 (I-74)
 LANDSCAPE - LAYOUT 4
 DATE: 07/16/2004
 DRAWN BY: KC/DL
 CHECKED BY: JB

F.A.I. RTE.	SECTION	COUNTY	TOTAL SHEETS	SHEET NO.
74	72(7,8,9,9-1)LS	PEORIA	19	18
STA. TO STA.		FED. ROAD DIST. NO. 4 ILLINOIS FED. AID PROJECT		



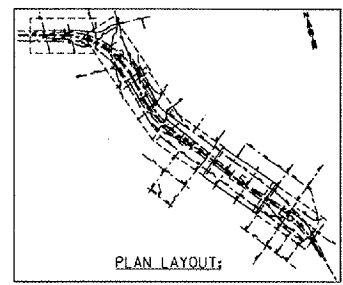
MATCH LINE SEE SHEET 17

MATCH LINE SEE SHEET 19

SCALE= 1:500m

LEGEND

- VINES ON SOUND/RETAINING WALL
- SHRUBS
- PROPOSED EVERGREEN TREE
- PROPOSED SMALL ORNAMENTAL TREE
- PROPOSED SHADE TREE (5' DIA. MULCH SAUCER-TYP. -FOR ALL TREES & SHRUBS)
- INTERSEEDING, CLASS 4A AND/OR 5
- PERENNIAL PLANTS, FOR SUN
- PROPOSED PERENNIAL PLANTS, FOR SUN (REFER TO SHEET NO. 9)
- PROPOSED PLANT KEY (REFER SHEET NO.4) PROPOSED QUANTITY OF SPECIFIED PLANT
- PROPOSED IRRIGATION CONNECTION



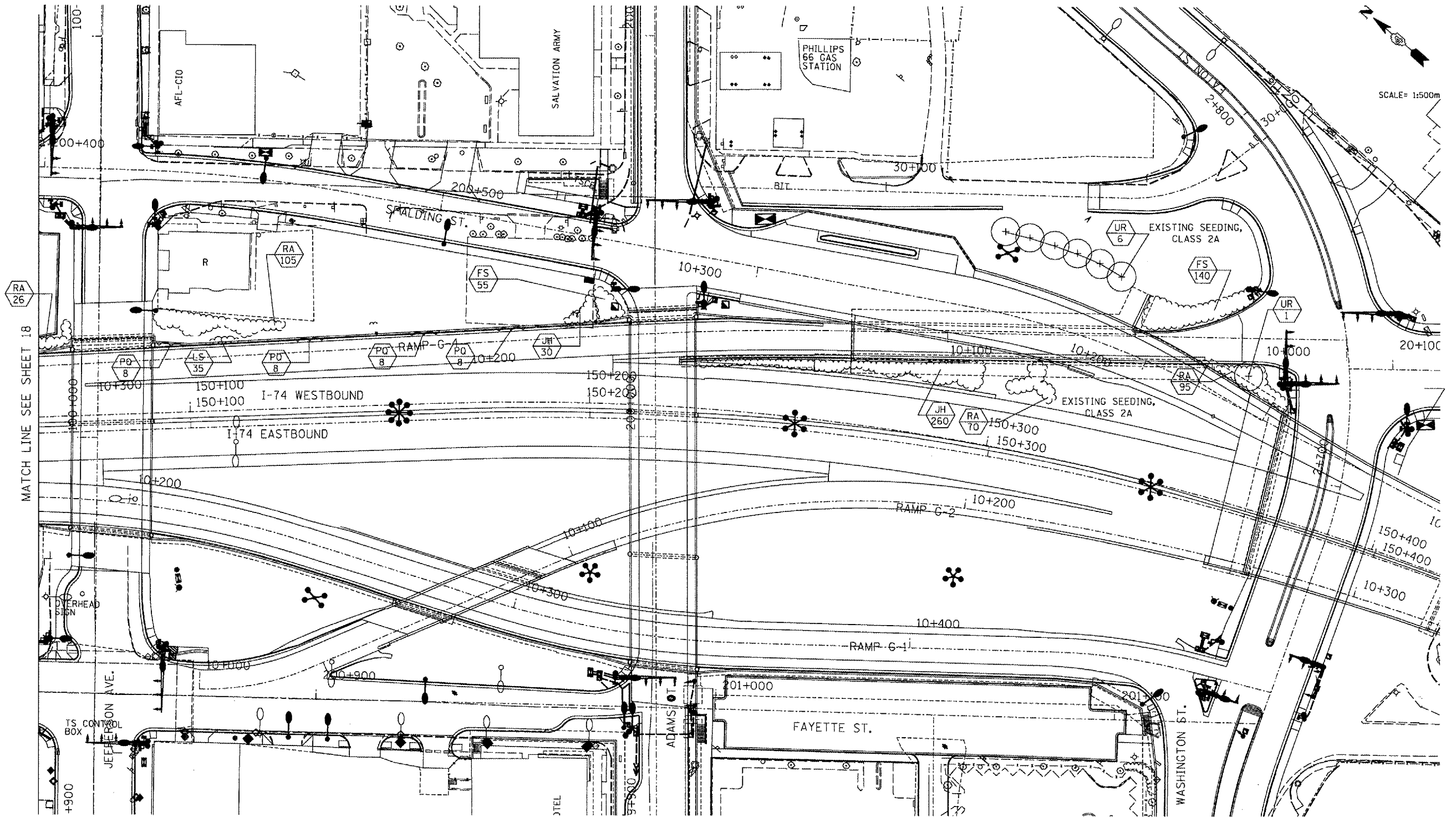
REVISIONS	
NAME	DATE

ILLINOIS DEPARTMENT OF TRANSPORTATION
 FAI ROUTE 74 (I-74)
 LANDSCAPE - LAYOUT 5

DATE: 07/16/2004

DRAWN BY: KC/DL
 CHECKED BY: JB

F.A.I. DIST. NO.	SECTION	COUNTY	TOTAL SHEETS	SHEET NO.
74	72(7,8,9,9-1)LS	PEORIA	19	19
STA. TO STA.		FED. ROAD DIST. NO. 4 ILLINOIS FED. AID PROJECT		

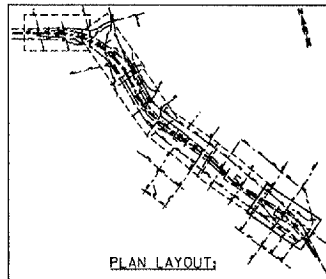


SCALE= 1:500m

MATCH LINE SEE SHEET 18

LEGEND

- | | | |
|--------------------------------|---|---|
| VINES ON SOUND/RETAINING WALL | PROPOSED SHADE TREE (5' DIA. MULCH SAUCER-TYP. -FOR ALL TREES & SHRUBS) | PROPOSED PERENNIAL PLANTS, FOR SUN (REFER TO SHEET NO. 9) |
| SHRUBS | INTERSEEDING, CLASS 4A AND/OR 5 | PROPOSED PLANT KEY (REFER SHEET NO.4) |
| PROPOSED EVERGREEN TREE | PERENNIAL PLANTS, FOR SUN | PROPOSED QUANTITY OF SPECIFIED PLANT |
| PROPOSED SMALL ORNAMENTAL TREE | PROPOSED IRRIGATION CONNECTION | |



REVISIONS	
NAME	DATE

ILLINOIS DEPARTMENT OF TRANSPORTATION
 FAI ROUTE 74 (I-74)
LANDSCAPE - LAYOUT 6

DATE: 07/16/2004
 DRAWN BY: KC/DL
 CHECKED BY: JB