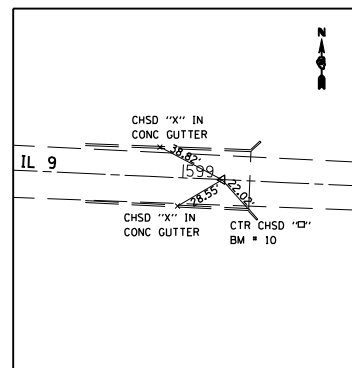
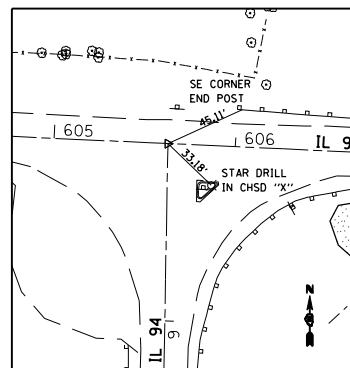


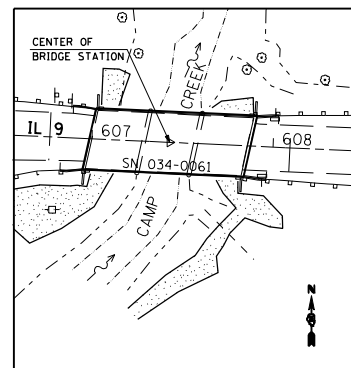
F.A.P. RTE.	SECTION	COUNTY	TOTAL SHEETS	SHEET NO.
685	115(BR-1)	HANCOCK	44	13
STA.		TO STA.		
FED. ROAD DIST. NO.		ILLINOIS FED. AID PROJECT		



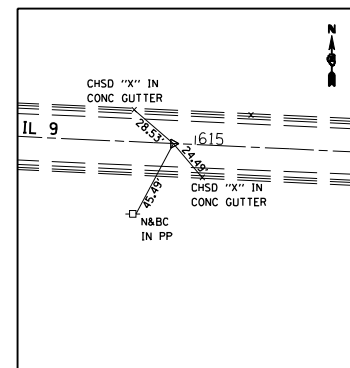
P.O.T. 599+21.71 (IL 9)
(PK IN CHSLD "X")



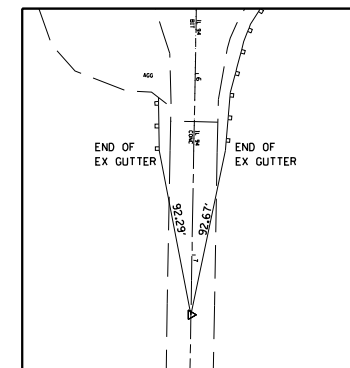
P.O.T. 605+62.78 (IL 9)
= 5+02.16 (IL 94)
(PK IN CHSLD "X")



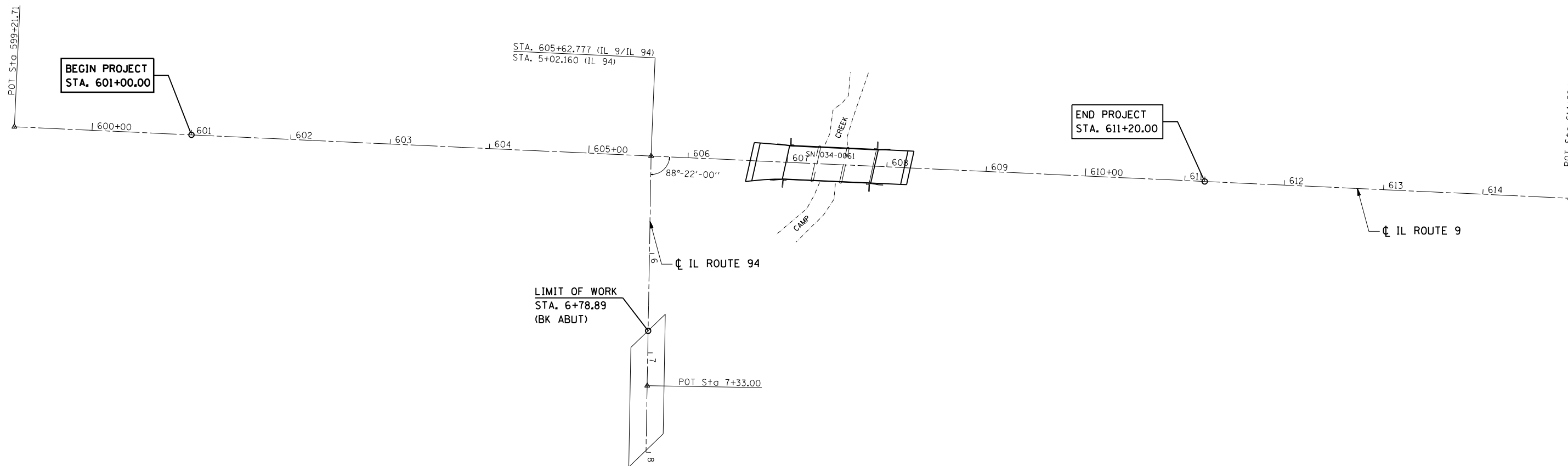
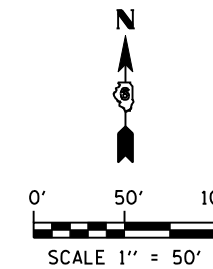
P.O.T. 607+43.00 (IL 9)
(STAR DR. 11 IN CHSLD "X")



P.O.T. 614+88.11 (IL 9)
(PK IN CHSLD "X")



P.O.T. 7+33.00 (IL 94)
(PK IN CHSLD "X")



BM #11: STA. 605+5.8, 191.2' RT
CHISLED "□" NW WING OF
BRIDGE 034-0060 ±200'
SOUTH OF JCT IL 9 & IL 94
@ STA 6+92.9, 17.4' RT (IL 94)
ELEV. = 599.03

BM #12: STA. 607+89.5, 17.3' LT
CHISLED "□" IN NE WING
OF BRIDGE 034-0061 ±300'
EAST OF JCT IL 9 & IL 94
ELEV. = 597.93

BM #13: FOUND
CHISLED "□" IN SE WINGWALL
OF BRIDGE 034-0010 @ 0.522
mi EAST ALONG IL 9/IL94
FROM JCT IL 94
ELEV. = 600.88

REVISIONS	
NAME	DATE

ILLINOIS DEPARTMENT OF TRANSPORTATION

ALIGNMENT AND TIES

DATE: 3/13/07
DRAWN BY JCW
CHECKED BY JRB

PLOT DATE = 7/2/2007
FILE NAME = c:\projects\6851887\hutchison_fm\2447-9a001.dgn
PLOT SCALE = 1/8"=1'-0" / IN.
USER NAME = laughlin-1