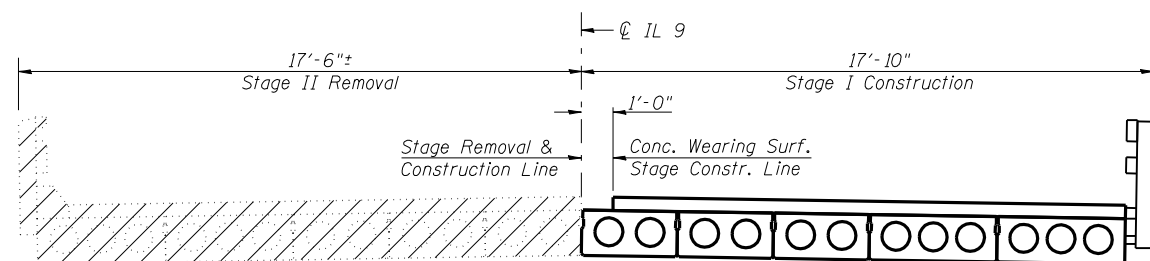
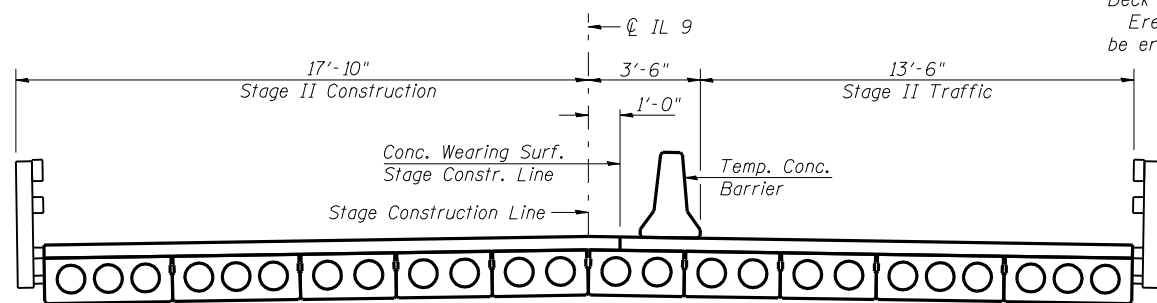


STAGE I REMOVAL & TRAFFIC
(Looking East)

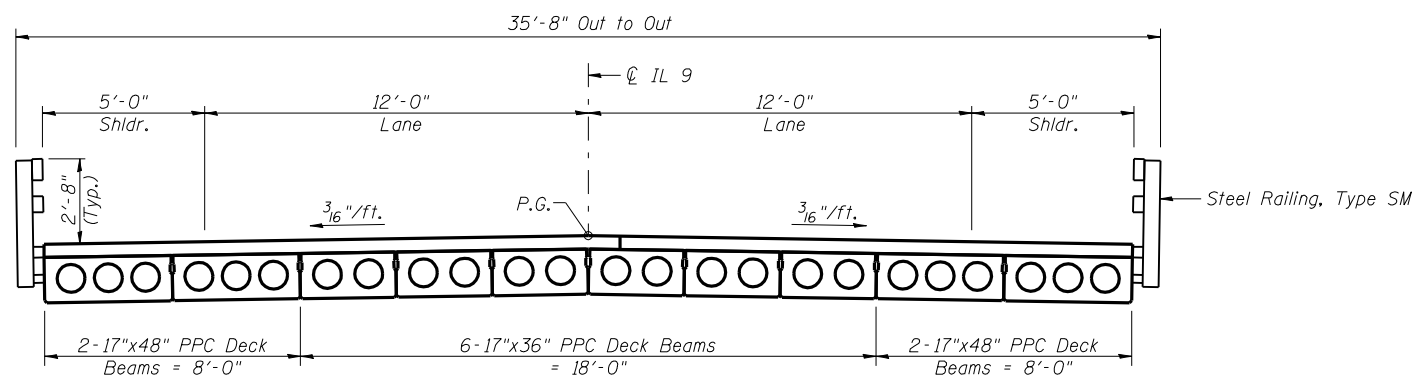


STAGE I CONSTRUCTION & STAGE II REMOVAL
(Looking East)

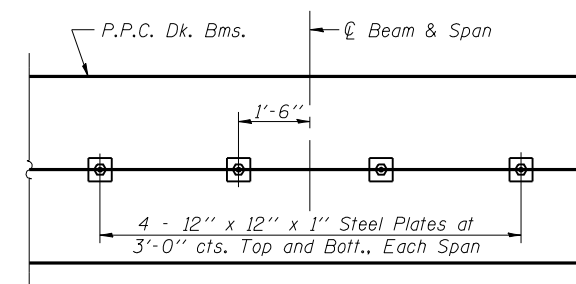
Notes:
 Hatched areas indicate removal of existing superstructure.
 See roadway plans for quantity of Temporary Concrete Barrier.
 See Sheet 15 of 17 for details of Temporary Concrete Barrier.
 See Sheet 17 of 17 for temporary bracing of existing PPC Deck Beams carrying Stage I Traffic.
 Erection sequence may require that deck beams at the centerline be erected first with transverse ties already installed.



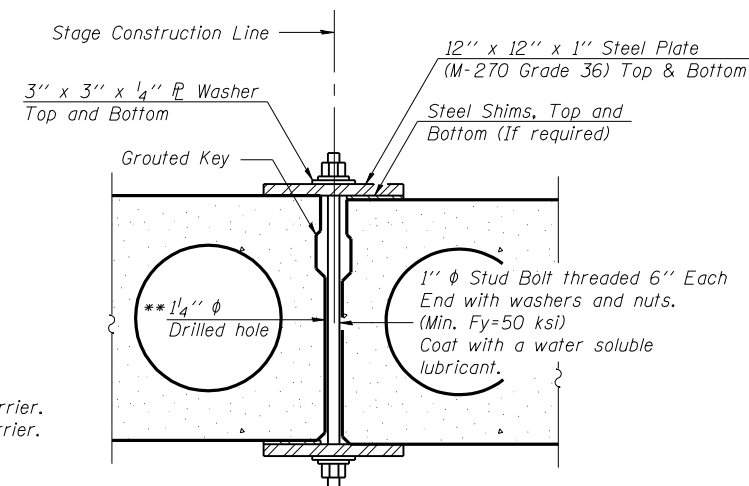
STAGE II CONSTRUCTION & TRAFFIC
(Looking East)



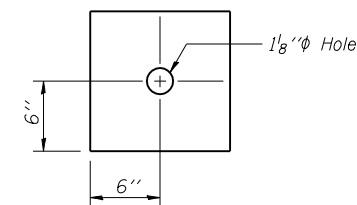
PROPOSED CROSS SECTION
(Looking East)



PLAN



SECTION



CLAMPING PLATE

SHEAR KEY CLAMPING DETAILS AT STAGE CONST. JT.

Cost included with Precast Prestressed Concrete Deck Beams (17" Depth).

** As an alternate to the drilled holes, the Contractor may request the Fabricator to cast 2" diameter semi-circular recesses in the sides of each beam adjacent to the stage construction line. These recesses should align to form a hole at the appropriate locations for the clamping device bolts. If the Contractor elects to use this alternate, the details shall be identified on the shop drawings.

ILLINOIS DEPARTMENT OF TRANSPORTATION
STAGE CONSTRUCTION DETAILS
 IL ROUTE 9 OVER
 CAMP CREEK
 F.A.P. ROUTE 685 - SECTION 115 BR-1
 HANCOCK COUNTY
 STA. 607+43.00
 STRUCTURE NO. 034-0061

Lin Engineering, Ltd.
 Consulting Engineers
 Chatham, Illinois

REVISIONS	
NAME	DATE

Designed By: DLS
 Date: 04/2007
 Checked By: MTH
 Date: 034-0061.dgn
 Drawn By: AUF