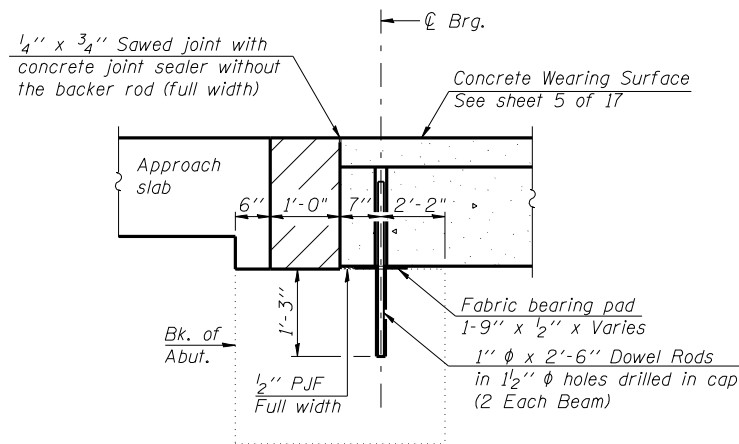


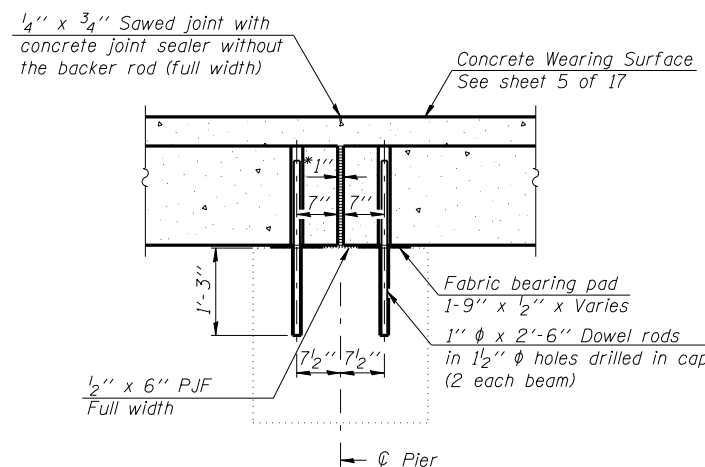
CROSS SECTION
(Looking East)

**SUPERSTRUCTURE
BILL OF MATERIAL**

Bar	No.	Size	Length	Shape
a(E)	86	#4	18'-6"	U
a1(E)	86	#4	16'-6"	U
b(E)	102	#4	29'-1"	—
Reinforcement Bars, Epoxy Coated			Pound	4000
Concrete Wearing Surface, 5"			Sq. Yd.	325

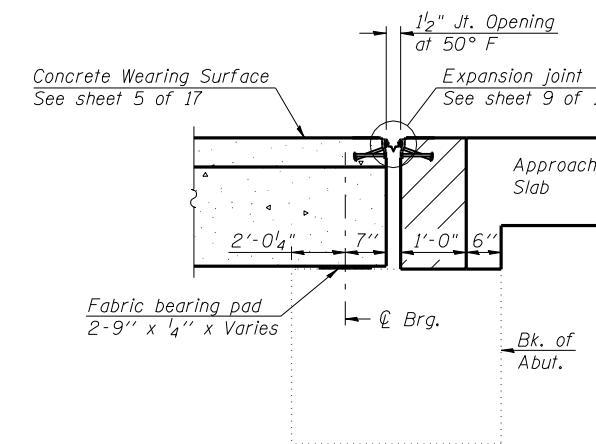


SECTION THRU WEST ABUTMENT
(Dimensions at Rt. L's)



SECTION THRU PIER
(Dimensions at Rt. L's)

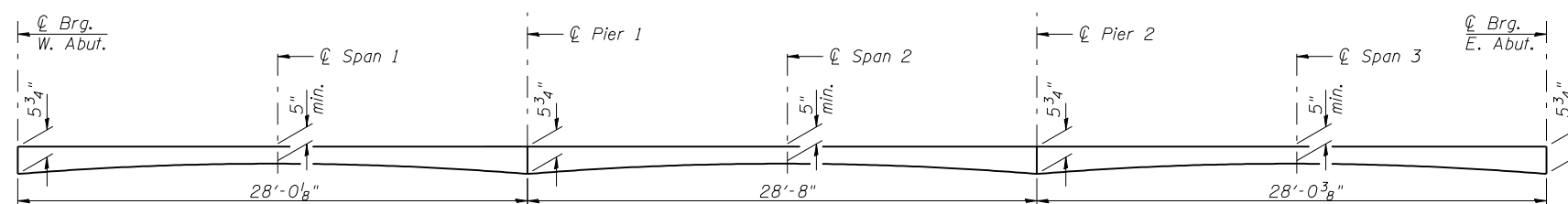
* 1" Jt. shall be filled with non-shrink grout. 1" dimension may vary to accommodate tolerance in beam lengths.



SECTION THRU EAST ABUTMENT
(Dimensions at Rt. L's)

Notes:

- Ends of beams shall be aligned at the expansion joints. Any lined variation in the beam lengths shall be placed at the fixed joint.
- After beams have been erected, retainers shall be installed, holes shall be drilled into substructure and anchor dowels placed. Dowel holes shall be filled with non-shrink grout to top of beam and allowed to cure min. 24 hrs. prior to grouting the shear keys.
- Dowel rods drilled in cap are included in the cost of Precast Prestressed Concrete Deck Beams (17" Depth).
- All horizontal dimensions are at right angles to beam ends, unless noted otherwise.
- Concrete wearing surface to be poured after grouting the shear keys.
- Hatched areas to be poured after concrete wearing surface is in place. Quantity included with Concrete Structures on Sheets 11 and 12 of 17.
- See Sheet 9 of 17 for bearing pad details.



REINFORCED CONCRETE WEARING SURFACE PROFILE

ILLINOIS DEPARTMENT OF TRANSPORTATION
SUPERSTRUCTURE DETAILS - 1
IL ROUTE 9 OVER
CAMP CREEK
F.A.P. ROUTE 685 - SECTION 115 BR-1
HANCOCK COUNTY
STA. 607+43.00
STRUCTURE NO. 034-0061

Lin Engineering, Ltd.
Consulting Engineers
Chatham, Illinois

Designed By: DLS
Date: 04/2007

Checked By: MTH
Files: 034-0061.dgn

Drawn By: AUF

REVISIONS	
NAME	DATE