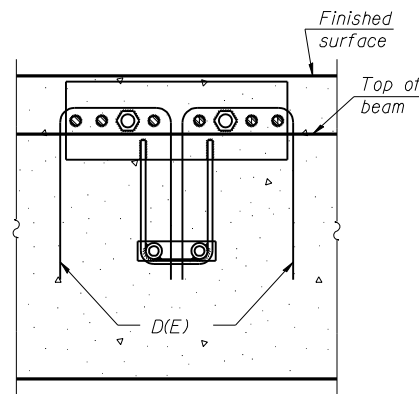


SECTION THRU EXTERIOR BEAMS



SECTION A-A

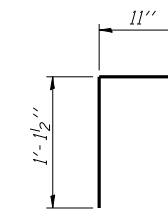
BAR LIST
(One 36" Beam)

Bar	No.	Size	Length	Shape
B	4	#5	28'-3"	—
B ₁	4	#5	5'-9"	—
U	12	#4	5'-8"	⊔

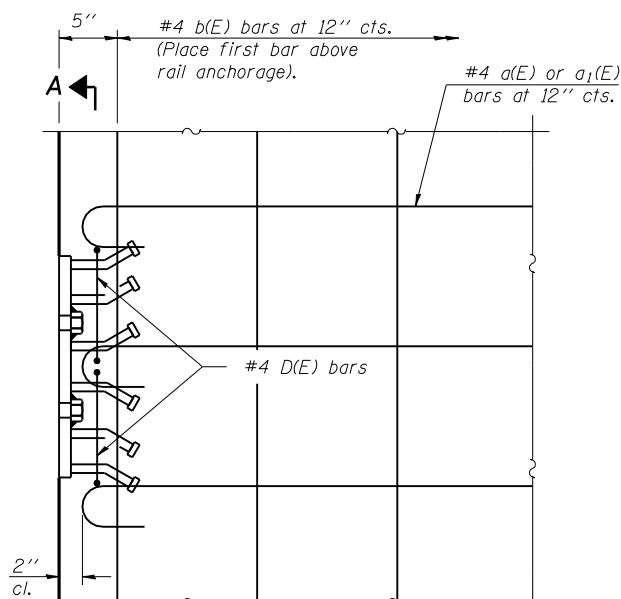
BAR LIST
(One 48" Beam)

Bar	No.	Size	Length	Shape
B	4	#5	28'-3"	—
B ₁	6	#5	5'-9"	—
* D(E)	10	#4	3'-2"	⊔
U ₁	16	#4	6'-8"	⊔

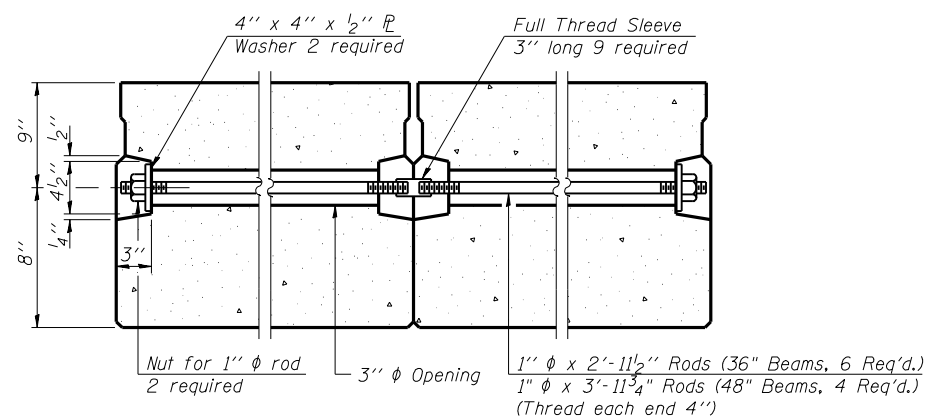
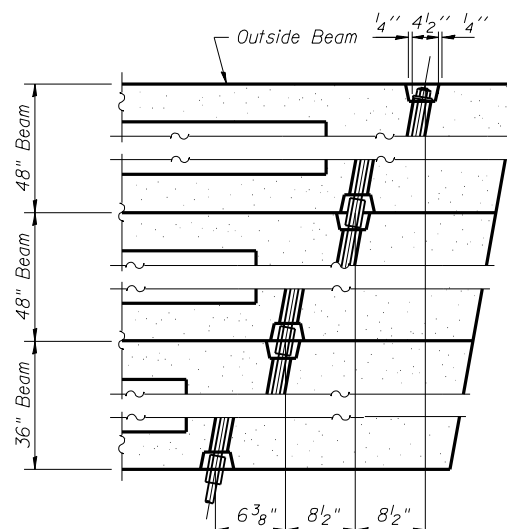
* At exterior beams only.



D(E) BAR



PLAN



TYPICAL TRANSVERSE TIE ASSEMBLY

NOTES

Prestressing steel shall be uncoated high strength, low relaxation 7-wire strand, Grade 270. The nominal diameter shall be 1/2" and the nominal cross-sectional area shall be 0.153 sq. in. Lifting loops shall be 2-1/2" diameter 270 ksi strands, as shown.

Non prestressing steel shall conform to ASTM A 706 (IL MOD), Grade 60.

The bearing seat surfaces shall be adjusted by shimming to assure firm and even bearing. Two 1/8" fabric adjusting shims of the dimensions of the Exterior Bearing Pad shall be provided for each bearing.

Keyway surfaces shall be cleaned to remove form oil or other bond breaking material prior to shipment of the beams. Cleaning shall be done by sandblasting the keyway areas between top of the beam and the bottom edge of the key.

Corrosion Inhibitor, per Article 1020.05(b)(12) of the Standard Specifications, shall be used in the concrete for precast prestressed concrete deck beams.

Required Release Strength, f'ci, shall be 4000 p.s.i.

The rail anchorage shall be cast with the beam and the wearing surface shall be cast in the field. Formwork necessary for the wearing surface may be secured utilizing the bottom rail anchorage inserts and/or additional inserts cast into the beam. Drilling into the beam will not be permitted. Cost of rail anchorages shall be included with Precast Prestressed Concrete Deck Beams (17" Depth). See Sheet 2 of 17 for location of rail anchors.

BILL OF MATERIAL

Precast Prestressed Concrete Deck Bms. (17" Depth)	Sq. Ft.	2914
--	---------	------

ILLINOIS DEPARTMENT OF TRANSPORTATION
SUPERSTRUCTURE DETAILS - 3
 IL ROUTE 9 OVER
 CAMP CREEK
 F.A.P. ROUTE 685 - SECTION 115 BR-1
 HANCOCK COUNTY
 STA. 607+43.00
 STRUCTURE NO. 034-0061

Lin Engineering, Ltd.
 Consulting Engineers
 Chatham, Illinois

REVISIONS	
NAME	DATE

Designed By: DLS
 Checked By: MTH
 Date: 04/2007
 Drawn By: AUF
 File: 034-0061.dgn