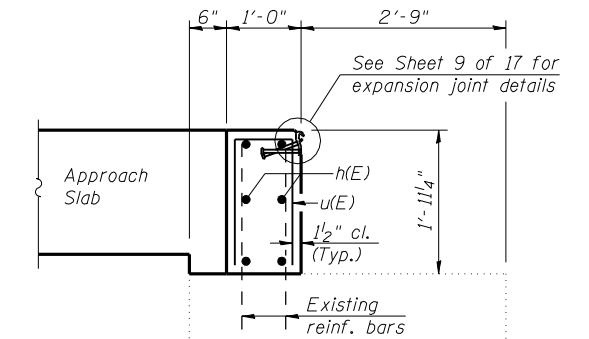
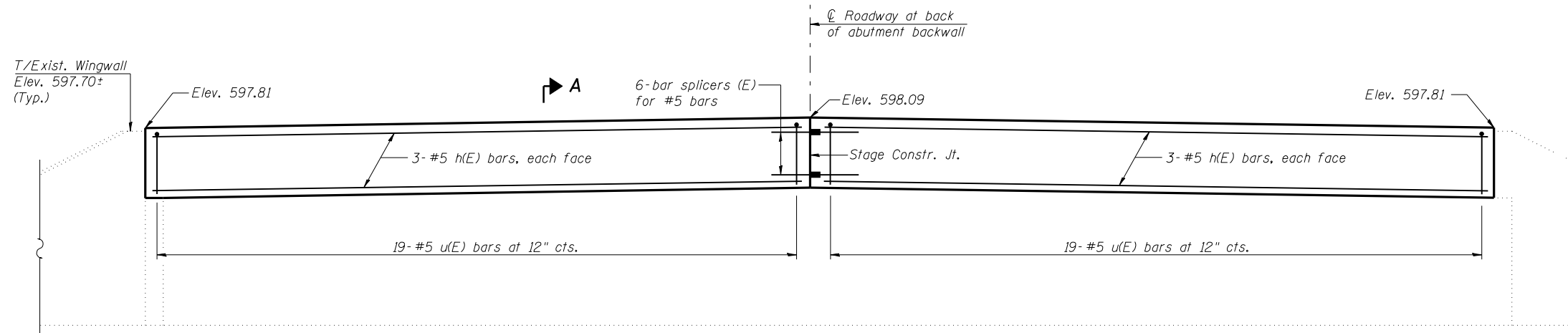
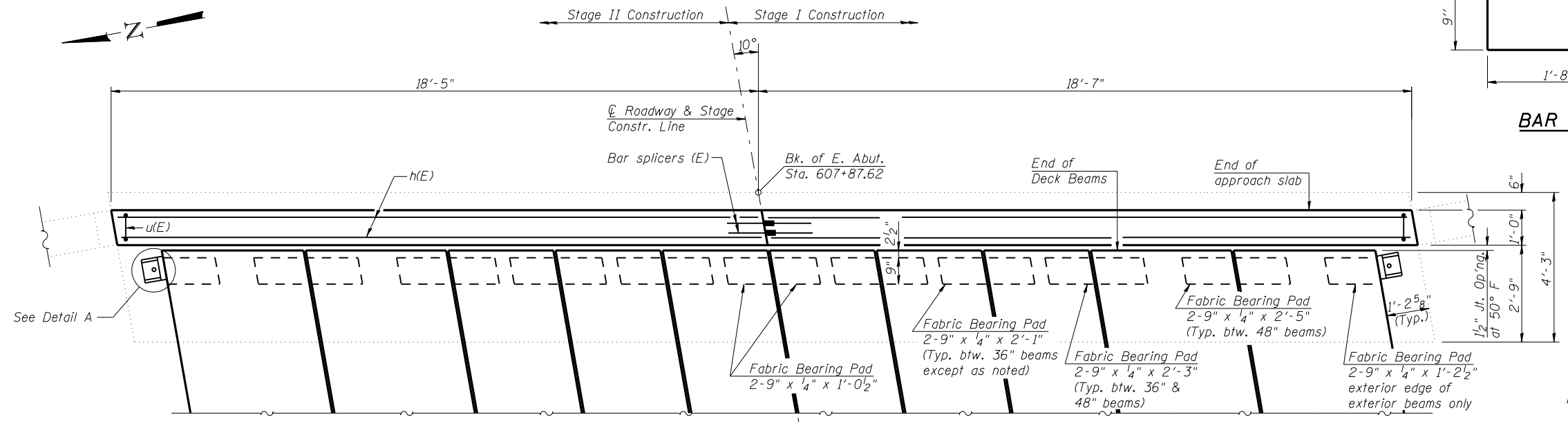


ROUTE NO.	SECTION	COUNTY	TOTAL SHEETS	SHEET NO.	SHEET NO. 12 17 SHEETS
F.A.P. 685	BR-1	HANCOCK	44	30	
FED. ROAD DIST. NO. 7	ILLINOIS	FED. AID PROJECT			

Contract #72A90



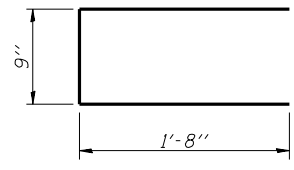
ELEVATION



PLAN

(Concrete wearing surface and approach pavement not shown)

BAR u(E)

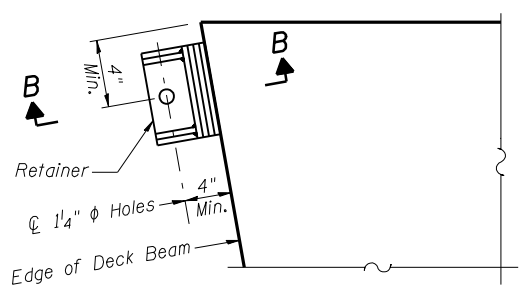


SECTION A-A
(Dimensions at Rt. L's)

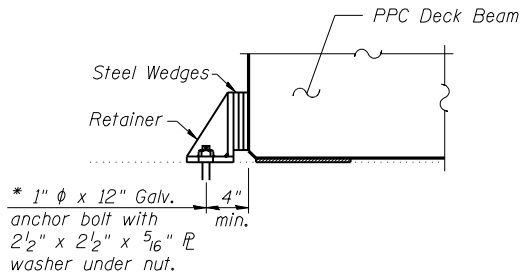
BILL OF MATERIAL
(East Abutment)

Bar	No.	Size	Length	Shape
h(E)	12	#5	18'-2"	—
u(E)	38	#5	4'-1"	□
Concrete Structures			Cu. Yd.	2.7
Reinforcement Bars, Epoxy Coated			Pound	390

Notes:
Anchor bolts shall be ASTM F1554 Grade 36 all-thread (or an Engineer-approved alternate material) of the diameter specified. ASTM A307 Grade C anchor bolts may be used in lieu of ASTM F1554 Grade 36 (Fy=36ksi). The corresponding specified grade of AASHTO M314 anchor bolts may be used in lieu of ASTM F1554. Anchor bolts shall be installed in holes drilled after beams have been erected and adjusted. Retainers shall be placed after bolts are installed. Drilled and set anchor bolts shall be installed according to Article 521.06 of the Standard Specifications. After concrete wearing surface is poured and cured the steel wedges shall be removed. Anchor bolts and retainers shall be left in place. Cost of retainers, anchor bolts, and accessories are included with Precast Prestressed Concrete Deck Beams (17" Depth). Concrete structures shown are to be poured after Concrete Wearing Surface is in place and cured. See Sheet 9 of 17 for Fabric Bearing Pad Details.

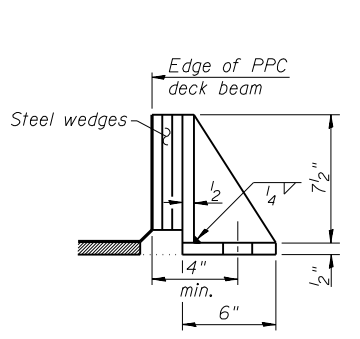


DETAIL A
(Retainer placement)



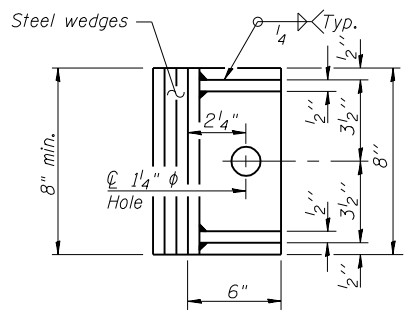
SECTION B-B

* Approved threaded rod shall be placed in drilled holes and grouted in place. Contractor has the option of using the existing 1" φ anchor bolts for retainer attachment, if they are determined to be in an acceptable condition by the Engineer. If the existing anchor bolts are not reused, they shall be cut off flush with the existing abutment surface, ground smooth and sealed with epoxy. Cost included with Precast Prestressed Concrete Deck Beams (17" Depth).



RETAINER

Equivalent rolled angle with stiffeners will be allowed in lieu of welded plates.



REVISIONS

NAME	DATE

Lin Engineering, Ltd.
Consulting Engineers
Chatham, Illinois

Designed By: DLS Checked By: MTH Drawn By: AJP
Date: 04/2007 File: 034-0061.dgn

ILLINOIS DEPARTMENT OF TRANSPORTATION
EAST ABUTMENT
IL ROUTE 9 OVER
CAMP CREEK
F.A.P. ROUTE 685 - SECTION 115 BR-1
HANCOCK COUNTY
STA. 607+43.00
STRUCTURE NO. 034-0061

7/2/2007 1:36:22 PM \$FILEABBREV\$