



CONTRACT NO. 74166

FAP RTE	SECTION	COUNTY	TOTAL SHEETS	SHEET NO.
716	(130BR-1)B-1	MACON	95	19
STA. 121+00		TO STA. 132+50		
FED. ROAD DIST. NO.		ILLINOIS FED. AID PROJECT		

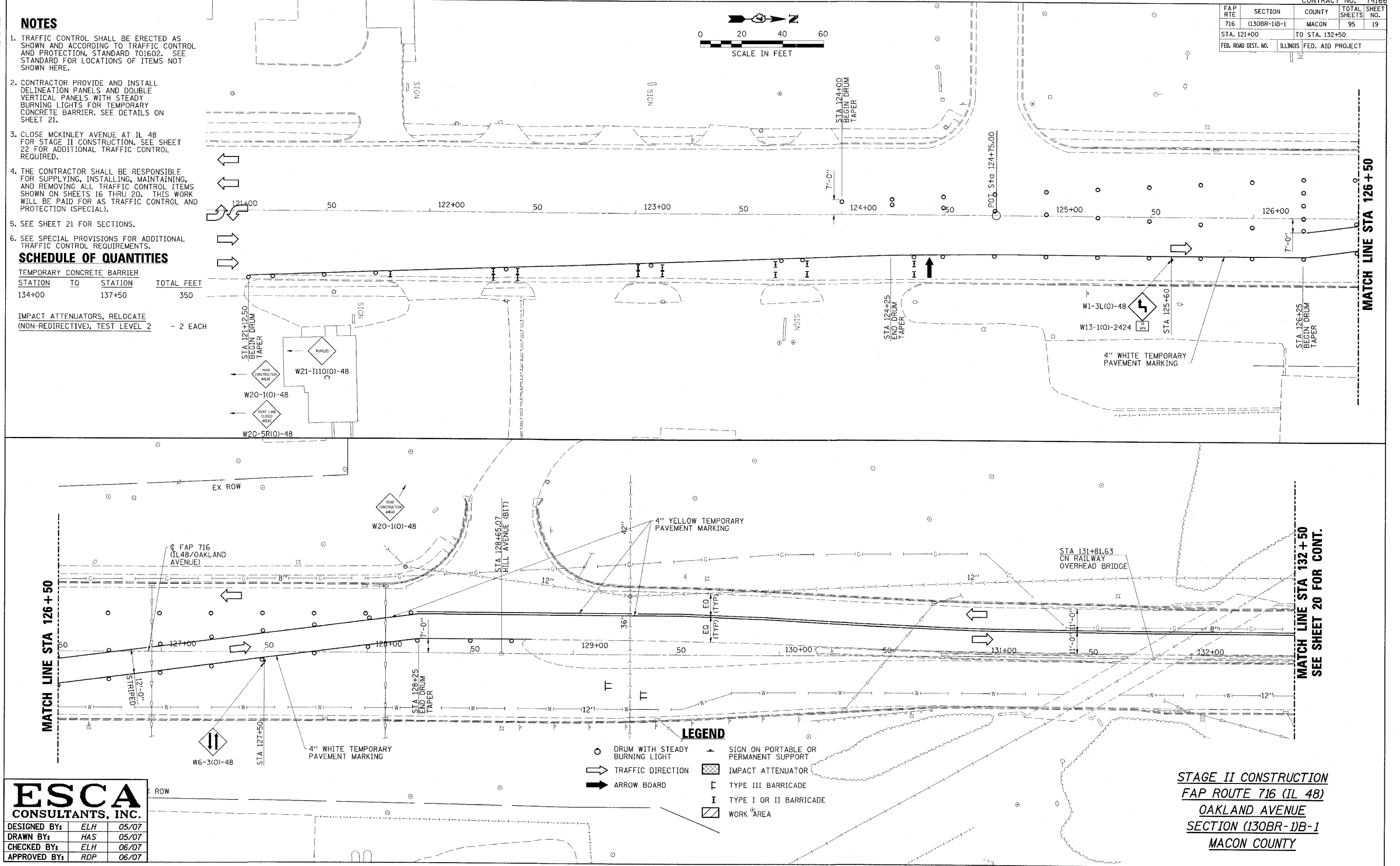
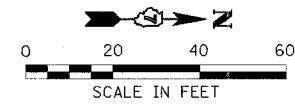
NOTES

1. TRAFFIC CONTROL SHALL BE ERECTED AS SHOWN AND ACCORDING TO TRAFFIC CONTROL AND PROTECTION, STANDARD 701602. SEE STANDARD FOR LOCATIONS OF ITEMS NOT SHOWN HERE.
2. CONTRACTOR PROVIDE AND INSTALL DELINEATION PANELS AND DOUBLE VERTICAL PANELS WITH STEADY BURNING LIGHTS FOR TEMPORARY CONCRETE BARRIER. SEE DETAILS ON SHEET 21.
3. CLOSE MCKINLEY AVENUE AT IL 48 FOR STAGE II CONSTRUCTION. SEE SHEET 22 FOR ADDITIONAL TRAFFIC CONTROL REQUIRED.
4. THE CONTRACTOR SHALL BE RESPONSIBLE FOR SUPPLYING, INSTALLING, MAINTAINING, AND REMOVING ALL TRAFFIC CONTROL ITEMS SHOWN ON SHEETS 16 THRU 20. THIS WORK WILL BE PAID FOR AS TRAFFIC CONTROL AND PROTECTION (SPECIAL).
5. SEE SHEET 21 FOR SECTIONS.
6. SEE SPECIAL PROVISIONS FOR ADDITIONAL TRAFFIC CONTROL REQUIREMENTS.

SCHEDULE OF QUANTITIES

TEMPORARY CONCRETE BARRIER	STATION TO	STATION	TOTAL FEET
	134+00	137+50	350

IMPACT ATTENUATORS, RELOCATE (NON-REDIRECTIVE), TEST LEVEL 2 - 2 EACH



LEGEND

○	DRUM WITH STEADY BURNING LIGHT	▲	SIGN ON PORTABLE OR PERMANENT SUPPORT
⇨	TRAFFIC DIRECTION	▨	IMPACT ATTENUATOR
⇨	ARROW BOARD	⊥	TYPE III BARRICADE
		I	TYPE I OR II BARRICADE
		▨	WORK AREA

ESCA CONSULTANTS, INC.

DESIGNED BY:	ELH	05/07
DRAWN BY:	HAS	05/07
CHECKED BY:	ELH	06/07
APPROVED BY:	RDP	06/07

STAGE II CONSTRUCTION
FAP ROUTE 716 (IL 48)
OAKLAND AVENUE
SECTION (130BR-1)B-1
MACON COUNTY

MATCH LINE STA 132+50
 SEE SHEET 20 FOR CONT.