

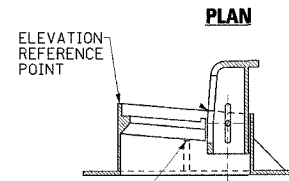
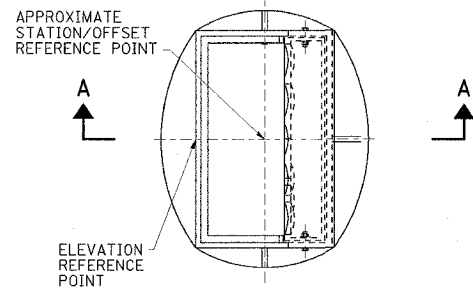


CONTRACT NO. 74166

FAP RTE	SECTION	COUNTY	TOTAL SHEETS	SHEET NO.
716	(130BR-1)B-1	MACON	95	34
STA.		TO STA.		
FED. ROAD DIST. NO.		ILLINOIS FED. AID PROJECT		

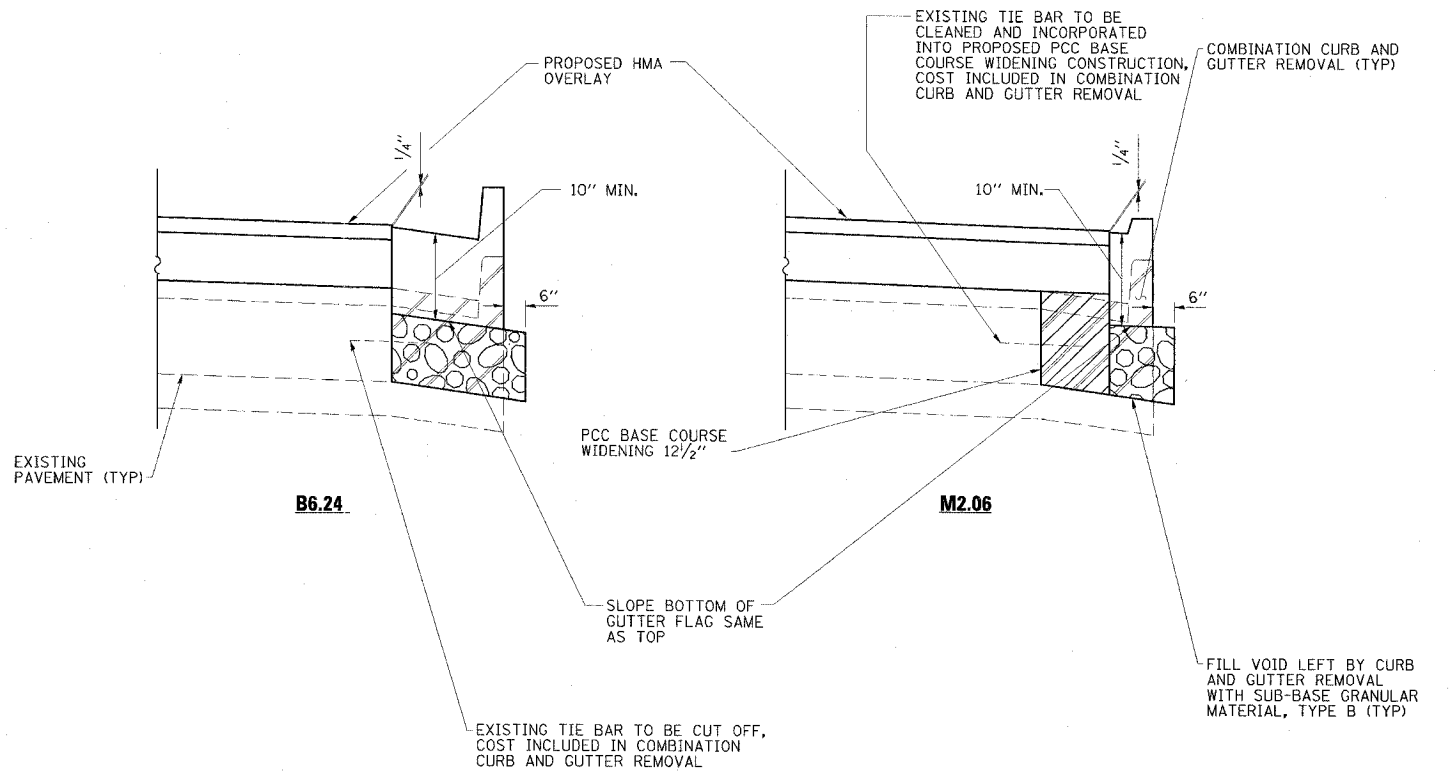
NOTE:
WITH THE EXCEPTION OF TYPE 11V FRAMES & GRATES, APPROXIMATE STATION/OFFSET REFERENCE POINTS WILL BE THE CENTER-LINE OF CASTING AND THE ELEVATION REFERENCE POINTS WILL BE THE TOP OF LID.

THE FOLLOWING DIAGRAMS ILLUSTRATE THE TYPE 11V FRAME AND GRATE.

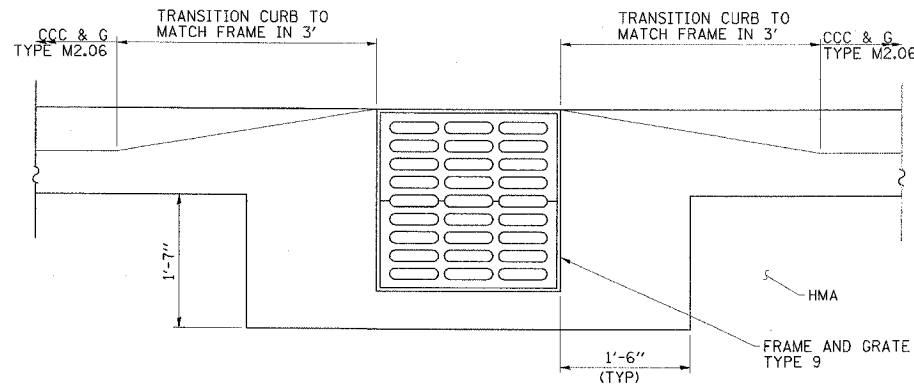


APPROXIMATE STATION/OFFSET REFERENCE POINT

**SECTION A-A
FRAME AND GRATE TYPE 11V**



TYPICAL CURB AND GUTTER DETAILS



**INLET PLAN
STA 136 + 96.32.56' LT**

NOTE: CURB AND GUTTER TRANSITIONS AND WIDENING AT FRAME AND GRATE INCLUDED IN THE COST OF CURB AND GUTTER TYPE M2.06

ESCA
CONSULTANTS, INC.

DESIGNED BY:	ELH	05/07
DRAWN BY:	KAH	05/07
CHECKED BY:	ELH	06/07
APPROVED BY:	RDP	06/07

MISCELLANEOUS DETAILS
FAP ROUTE 716 (IL 48)
OAKLAND AVENUE
SECTION (130BR-1)B-1
MACON COUNTY