

STATE OF ILLINOIS  
DEPARTMENT OF TRANSPORTATION

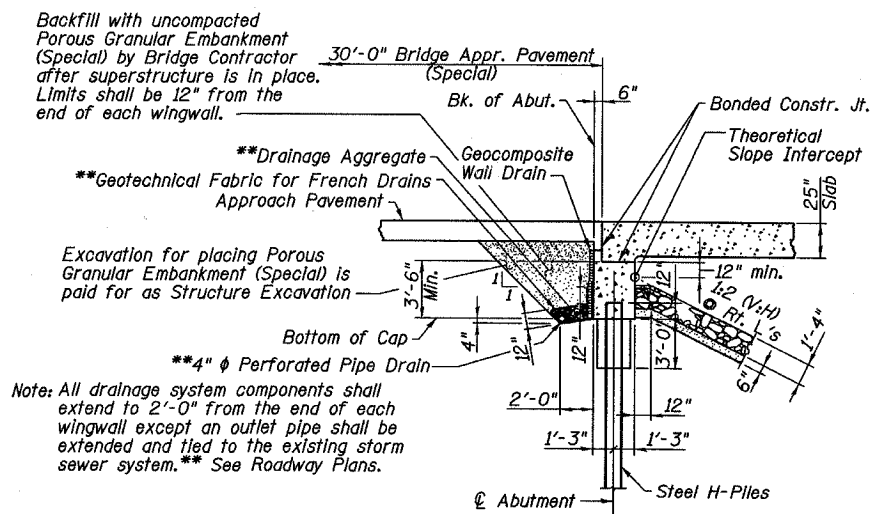
ROUTE NO.	SECTION	COUNTY	SHEET	TOTAL	SHEET NO. 2 28 SHEETS
FAP 716	#	MACON	95	36	
FED. ROAD DIST. NO. #		ILLINOIS	FED. AID PROJECT - NO.		CONTRACT NO. 74166
					*130BR-1B-1

**GENERAL NOTES**

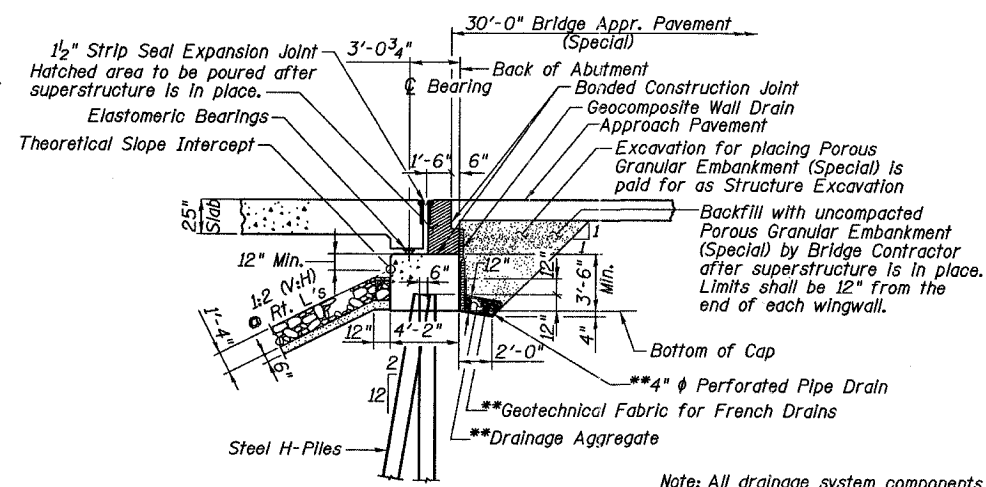
- The Contractor shall make allowance for the deflection of forms, shrinkage and settlement of falsework, in addition to allowance for dead load deflection. Forms for deck slab shall be removed prior to placement of bridge approach pavement.
- Concrete Sealer shall be applied to the designated areas of the North Abutment.
- Reinforcement bars shall conform to the requirements of ASTM A 706 Gr 60 (IL Modified). See Special Provisions.
- Reinforcement bars designated (E) shall be epoxy coated.
- Excavation behind existing abutment walls shall be performed to balance front and back soil pressure before Stage I removal of the existing superstructure. The Contractor shall sawcut the upper portion of the existing abutment at the stage removal line before Stage I removal to ensure the remaining portion will not be prematurely damaged.
- The Contractor shall drive test piles in production locations at substructures specified or approved by the Engineer before ordering the remainder of piles. The test piles shall be driven to 110 percent of the Nominal Required Bearing Indicated in the pile data information.
- Layout of the slope protection system may be varied to suit ground conditions in the field as directed by the Engineer.
- The Contractor is advised that the existing PPC Deck Beams are in a deteriorated condition with reduced load carrying capacity. It is the Contractor's responsibility to account for the condition of the beams when developing construction procedures.
- If the Contractor's procedure for existing deck beam removal or placement of new deck beams involves placement of cranes or other heavy equipment on deck beams, a detailed procedure shall be submitted to the Engineer for approval. The procedure shall include calculations, prepared and sealed by an Illinois Licensed Structural Engineer, verifying that the equipment and procedure used will not overstress the deck beams.
- If required to be anchored, temporary concrete barrier shall only be anchored into the overlay and not the PPC Deck Beams.
- A cantilevered sheet piling design does not appear feasible and additional members or other retention systems may be necessary. The Contractor shall submit a temporary soil retention system design including plan details and calculations for review and acceptance by the Engineer.

**TOTAL BILL OF MATERIAL**

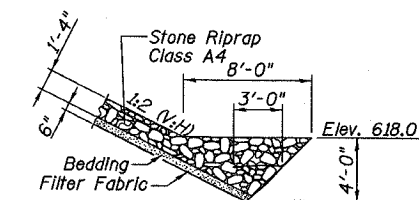
ITEM	UNIT	SUPER	SUB	TOTAL
Porous Granular Embankment, Special	Cu. Yd.		265	265
Stone Riprap, Class A4	Sq. Yd.		840	840
Filter Fabric	Sq. Yd.		840	840
Removal of Existing Structures	Each	0.5	0.5	1
Structure Excavation	Cu. Yd.		890	890
Concrete Structures	Cu. Yd.		349.6	349.6
Concrete Superstructure	Cu. Yd.	1052.7		1052.7
Bridge Deck Grooving	Sq. Yd.	1032		1032
Protective Coat	Sq. Yd.	1435		1435
Reinforcement Bars, Epoxy Coated	Pound	144300	27810	172110
Concrete Sealer	Sq. Ft.		1075	1075
Pipe Underdrains for Structures 4"	Foot		280	280
Geocomposite Wall Drain	Sq. Yd.		140	140
Furnishing Steel Piles HP10x42	Foot		4600	4600
Driving Piles	Foot		4600	4600
Test Pile Steel HP10x42	Each		4	4
Pile Shoes	Each		84	84
Underwater Structure Excavation Protection-Location 1	Each		1	1
Underwater Structure Excavation Protection-Location 2	Each		1	1
Drainage Scuppers DS-12	Each	6		6
Name Plates	Each	1		1
Temporary Soil Retention System	Sq. Ft.		370	370
Bar Splacers	Each	311	80	391
Anchor Bolts, 1"	Each		32	32
Concrete Encasement	Cu. Yd.		29.4	29.4
Parapet Railing	Foot	288		288
Elastomeric Bearing Assembly, Type I	Each	16		16
Preformed Joint Strip Seal	Foot	110		110
Pipe Support	Each	16		16
Temporary Support System	Each	1		1



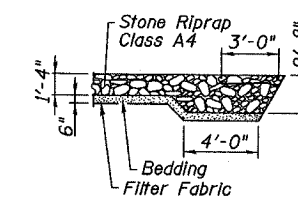
**SECTION THRU SOUTH ABUTMENT**  
(Horizontal Dim. @ Rt. L's)



**SECTION THRU NORTH ABUTMENT**  
(Horizontal Dim. @ Rt. L's)



**SECTION A-A**



**SECTION B-B**

**GENERAL DATA**  
IL ROUTE 48  
OVER SPRING CREEK  
FAP ROUTE 716 - SECTION (130BR-1B-1)  
MACON COUNTY  
STATION 135+77.11  
STRUCTURE NO. 058-0135

**ESCA**  
CONSULTANTS, INC.

DESIGNED BY:	ELH	03/07
DRAWN BY:	cj	03/07
CHECKED BY:	ELH	06/07
APPROVED BY:	RDP	06/07