

STATE OF ILLINOIS  
DEPARTMENT OF TRANSPORTATION

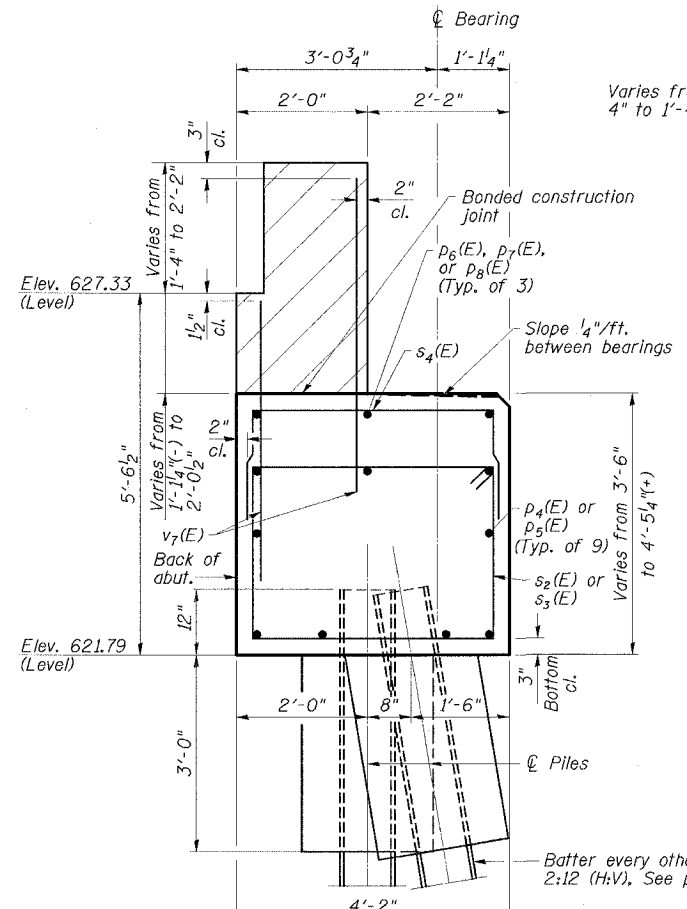
ROUTE NO.	SECTION	COUNTY	TOTAL SHEETS	SHEET NO.	SHEET NO. 17 28 SHEETS
FAP 716	*	MACON	95	51	
FED. ROAD DIST. NO. *		ILLINOIS	FED. PROJ. NO. 441		CONTRACT NO. 74166 *U30BR-1B-1

**SOUTH ABUTMENT  
BILL OF MATERIAL**

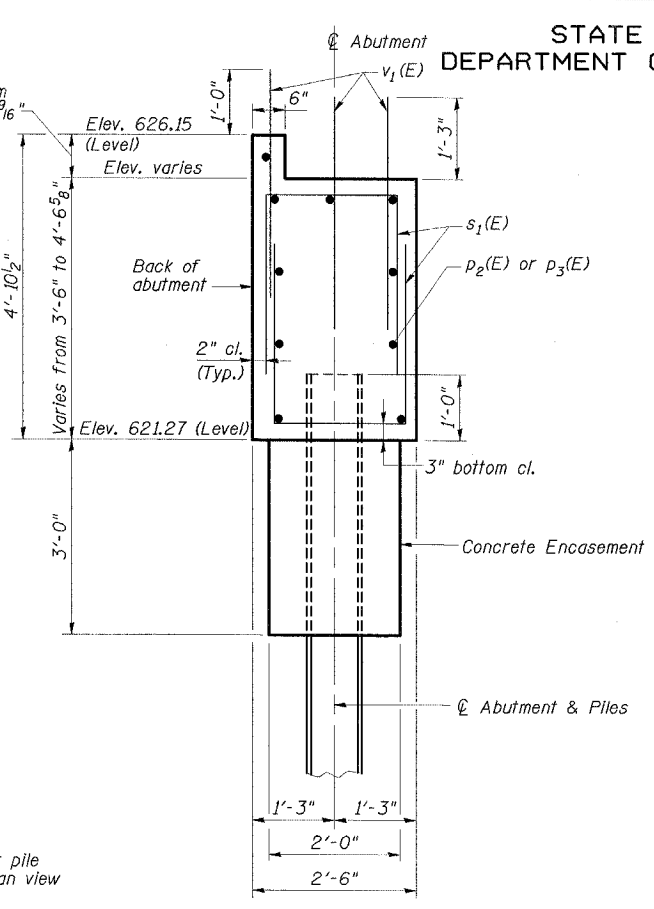
Bar	No.	Size	Length	Shape
$h_2(E)$	36	#5	8'-0"	—
$h_3(E)$	16	#5	2'-0"	—
$p_2(E)$	10	#7	29'-9"	—
$p_3(E)$	10	#7	28'-8"	—
$s_1(E)$	184	#4	7'-8"	□
$u_2(E)$	8	#5	8'-4"	┘
$v_1(E)$	304	#5	3'-6"	—
$v_3(E)$	14	#5	9'-10"	—
Reinforcement Bars, Epoxy Coated	Pound		3800	
Concrete Structures	Cu. Yd.		46.6	
Structure Excavation	Cu. Yd.		261	
Furnishing Steel	Foot		675	
Piles HP10x42	Foot		675	
Driving Piles	Foot		675	
Test Pile Steel HP10x42	Each		1	
Porous Granular Embankment, Special	Cu. Yd.		120	
Bar Splicers	Each		10	
Concrete Encasement	Cu. Yd.		5.6	
Pile Shoes	Each		16	
Geocomposite Wall Drain	Sq. Yd.		65	
Pipe Underdrains for Structures, 4"	Foot		140	

**NORTH ABUTMENT  
BILL OF MATERIAL**

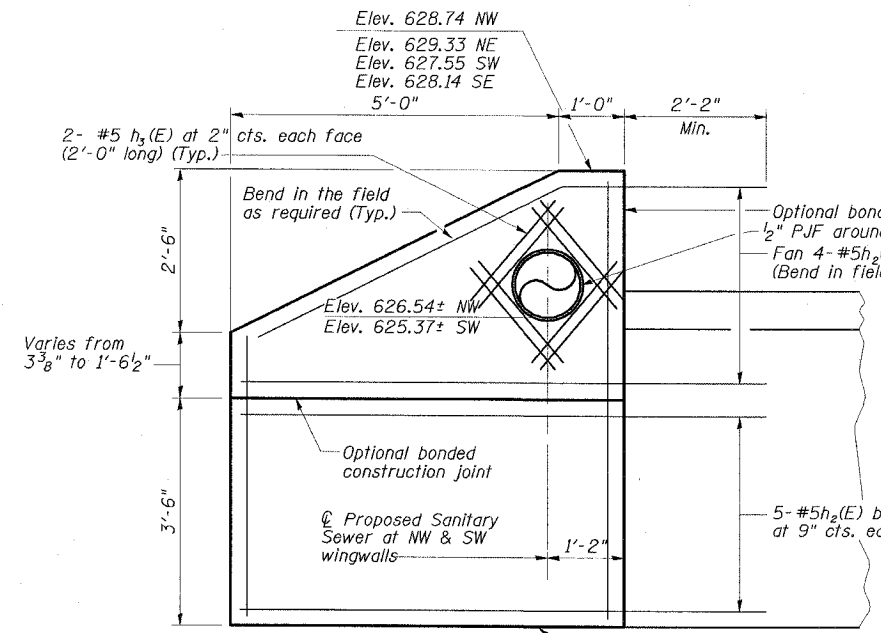
Bar	No.	Size	Length	Shape
$h_2(E)$	36	#5	8'-0"	—
$h_3(E)$	16	#5	2'-0"	—
$p_4(E)$	18	#7	30'-7"	—
$p_5(E)$	18	#7	28'-8"	—
$p_6(E)$	3	#7	36'-9"	—
$p_7(E)$	3	#7	15'-9"	—
$p_8(E)$	3	#7	10'-3"	—
$s_2(E)$	47	#4	14'-6"	□
$s_3(E)$	43	#4	15'-6"	□
$s_4(E)$	64	#4	7'-2"	□
$s_5(E)$	1	#4	15'-4"	□
$s_6(E)$	1	#4	17'-2"	□
$s_7(E)$	1	#4	16'-4"	□
$s_8(E)$	1	#4	18'-2"	□
$u_3(E)$	8	#5	10'-7"	┘
$v_4(E)$	14	#5	11'-11"	—
$v_7(E)$	220	#5	4'-9"	—
Reinforcement Bars, Epoxy Coated	Pound		5510	
Concrete Structures	Cu. Yd.		73.0	
Structure Excavation	Cu. Yd.		345	
Furnishing Steel	Foot		900	
Piles HP10x42	Foot		900	
Driving Piles	Foot		900	
Test Pile Steel HP10x42	Each		1	
Porous Granular Embankment, Special	Cu. Yd.		145	
Bar Splicers	Each		12	
Concrete Encasement	Cu. Yd.		5.6	
Pile Shoes	Each		16	
Geocomposite Wall Drain	Sq. Yd.		75	
Pipe Underdrains for Structures, 4"	Foot		140	
Concrete Sealer	Sq. Ft.		1075	



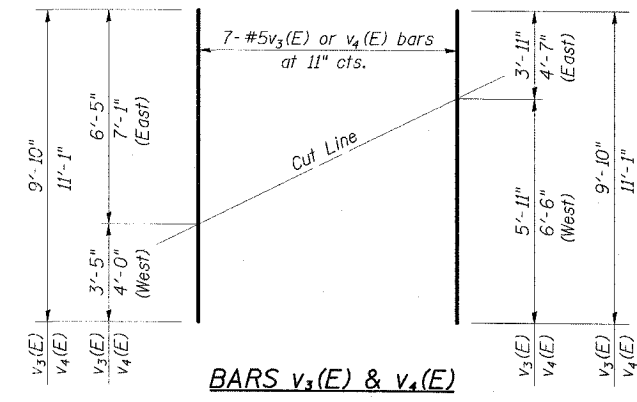
**SECTION THRU NORTH ABUTMENT**  
(Horizontal dimensions at right angles)



**SECTION THRU SOUTH ABUTMENT**  
(Horizontal dimensions at right angles)

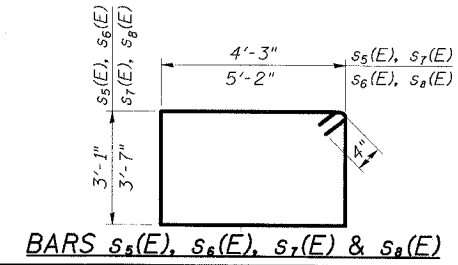


**WINGWALL DETAIL**

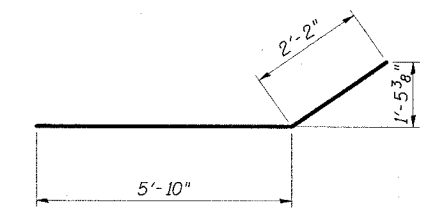


**FIELD CUTTING DIAGRAM**

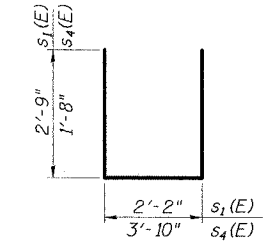
Order  $v_3(E)$  &  $v_4(E)$  full length. Cut as shown and use remainder of bars in opposite wingwall.



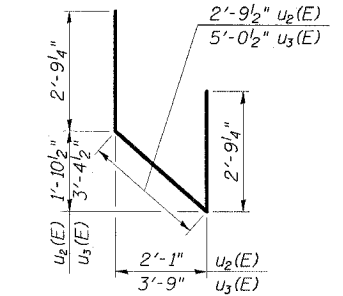
**BARS  $s_2(E)$ ,  $s_3(E)$ ,  $s_7(E)$  &  $s_8(E)$**



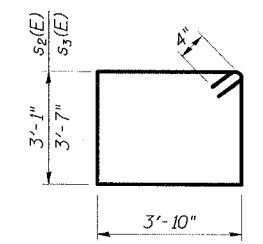
**BAR  $h_2(E)$**



**BARS  $s_1(E)$  &  $s_4(E)$**



**BARS  $u_2(E)$  &  $u_3(E)$**



**BARS  $s_2(E)$  &  $s_3(E)$**

**ESCA**  
CONSULTANTS, INC.

DESIGNED BY:	ELH	05/07
DRAWN BY:	oj	05/07
CHECKED BY:	ELH	06/07
APPROVED BY:	RDP	06/07

**ABUTMENT DETAILS**  
**IL ROUTE 48**  
**OVER SPRING CREEK**  
**FAP ROUTE 716 - SECTION (I30BR-1B-1**  
**MACON COUNTY**  
**STATION 135+77.11**  
**STRUCTURE NO. 058-0135**