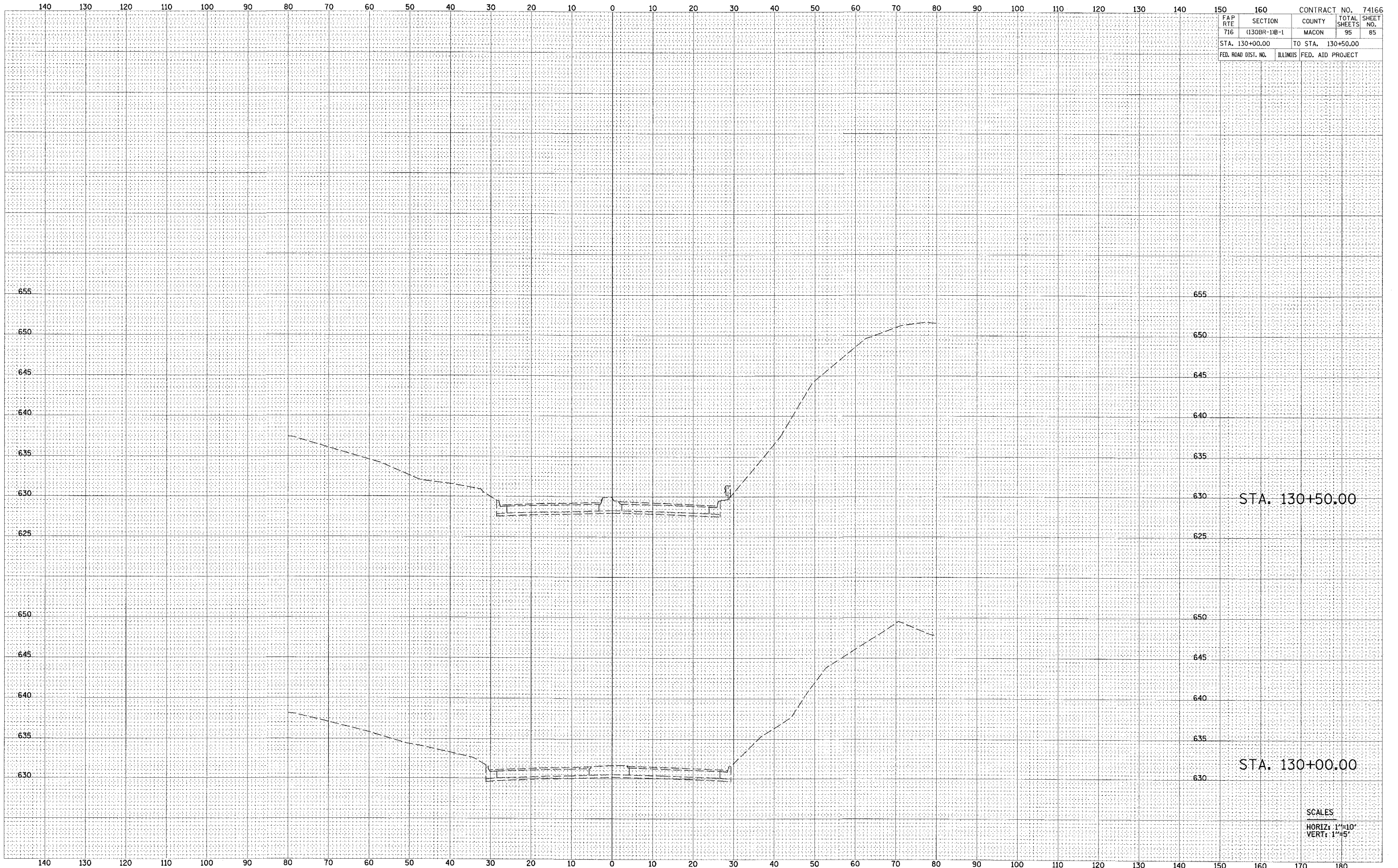




BY	DATE
FINAL SURVEY	SURVEYED
NOTE BOOK	PLOTTED
NO.	DATE
	AREAS CHECKED

BY	DATE
ORIGINAL SURVEY	SURVEYED
NOTE BOOK	PLOTTED
NO.	DATE
	AREAS CHECKED



FAP	SECTION	COUNTY	TOTAL	SHEET
RTE	(130BR-1B-1)	MACON	SHEETS	NO.
716			95	85
STA. 130+00.00		TO STA. 130+50.00		
FED. ROAD DIST. NO.		ILLINOIS FED. AID PROJECT		

STA. 130+50.00

STA. 130+00.00

SCALES
HORIZ: 1"=10'
VERT: 1"=5'