

INDEX OF SHEETS

FOR INDEX OF SHEETS, SEE SHEET NO. 2

PROJECT LOCATED IN CITY OF NAPERVILLE

DESIGN DESIGNATION

	ADT (2005)	POSTED SPEED	DESIGN SPEED
BAILEY ROAD (URBAN-LOCAL STREET)	11,375	30 MPH	35 MPH
	ADT (2030)		
	12,000		

STATE OF ILLINOIS
DEPARTMENT OF TRANSPORTATION
DIVISION OF HIGHWAYS

PLANS FOR PROPOSED FEDERAL AID LOCAL AGENCY IMPROVEMENT

FAU ROUTE 1545 (BAILEY ROAD)
OVER WEST BRANCH DuPAGE RIVER

CITY OF NAPERVILLE

SECTION 00-00115-00-BR

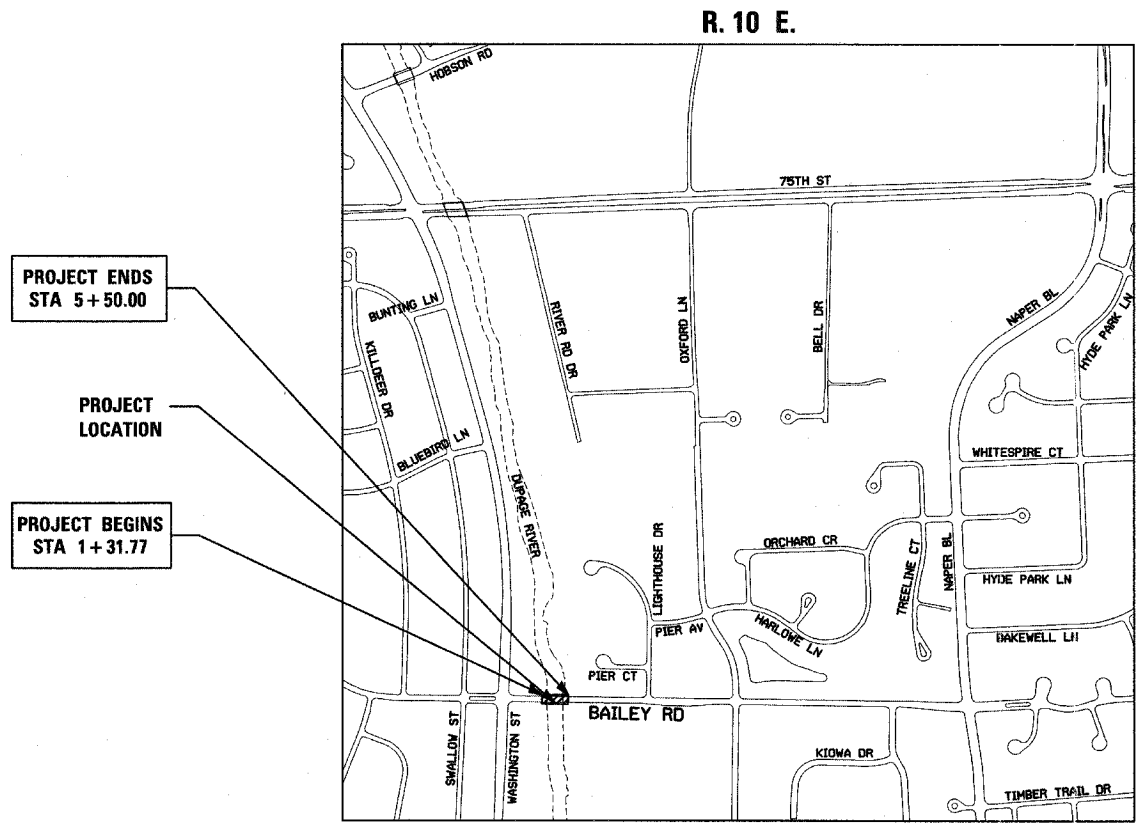
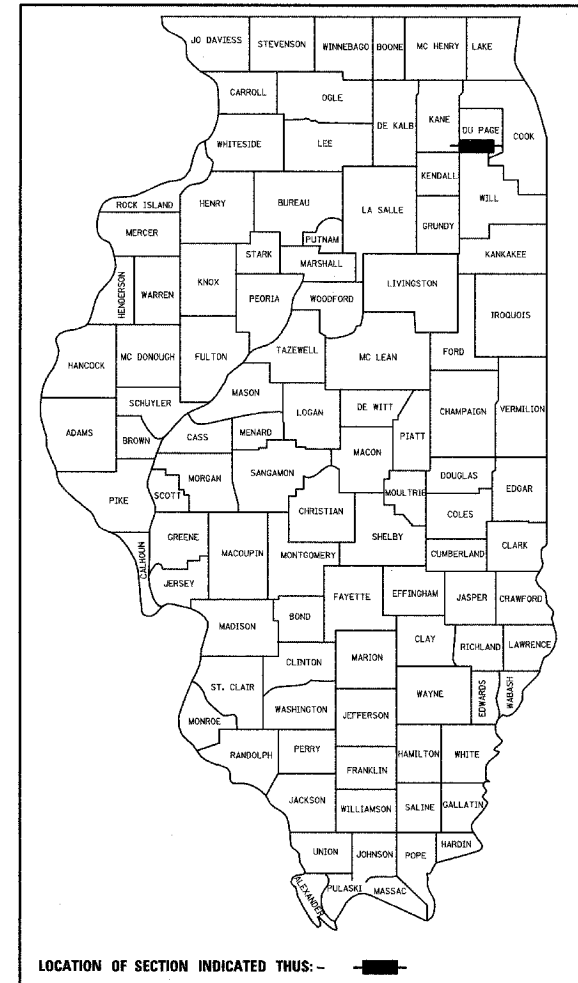
PROJECT NO.: BHM-8003 (343)

BRIDGE REPLACEMENT

DuPAGE COUNTY

JOB NO: C-91-062-04

F.A.U. RTE.	SECTION	COUNTY	TOTAL SHEETS	SHEET NO.
1545	00-00115-00 BR	DuPAGE	97	1
FED. ROAD DIST. NO.	ILLINOIS	FED. AID PROJECT	CONTRACT NO. 83961	



BAILEY ROAD OVER WEST BRANCH OF DuPAGE RIVER
STRUCTURE NO. 022-3028 (STA. 2+99.15)
REMOVE EXISTING 3-SPAN PPC DECK BEAM SUPERSTRUCTURE AND CONSTRUCT 3-SPAN CONTINUOUS STEEL WF BEAM SUPERSTRUCTURE. SUBSTRUCTURE IS TO BE WIDENED.

CITY OF NAPERVILLE

APPROVED July 5 20 07
[Signature]
CITY ENGINEER

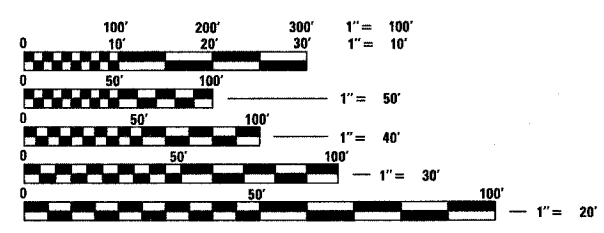
PASSED July 17 20 07
[Signature]
DISTRICT 1 ENGINEER OF LOCAL ROADS AND STREETS

RELEASED FOR BID
BASED ON LIMITED REVIEW
July 17 20 07
[Signature]
DEPUTY DIRECTOR OF HIGHWAYS, REGION 1 ENGINEER

Signed [Signature]
Spiros Pantazis, P.E., Il. Lic. No. 062-054027
Expires 11-30-2007
Date July 12, 2007

Signed [Signature]
Daniel Gacek, P.E., Il. Lic. No. 062-048355
Expires 11-30-2007
Date July 5, 2007

For Electrical Drawings 67 to 89



FULL SIZE PLANS HAVE BEEN PREPARED USING STANDARD ENGINEERING SCALES, REDUCED SIZED PLANS WILL NOT CONFORM TO STANDARD SCALES. IN MAKING MEASUREMENTS ON REDUCED PLANS, THE ABOVE SCALES MAY BE USED.

J.U.L.I.E.
JOINT UTILITY LOCATION INFORMATION FOR EXCAVATION
1-800-892-0123

CONTRACT NO. 83961

NOT TO SCALE
LISLE TOWNSHIP
GROSS LENGTH OF PROJECT = 419 FT. = 0.08 MI.
NET LENGTH OF PROJECT = 419 FT. = 0.08 MI.

ASSOCIATE FIELD ENGINEER: JESSICA FELICIANO (847) 705-4487
CONSULTANT SERVICES ENGINEER: SPIROS PANTAZIS, P.E., S.E. (773) 792-9000