

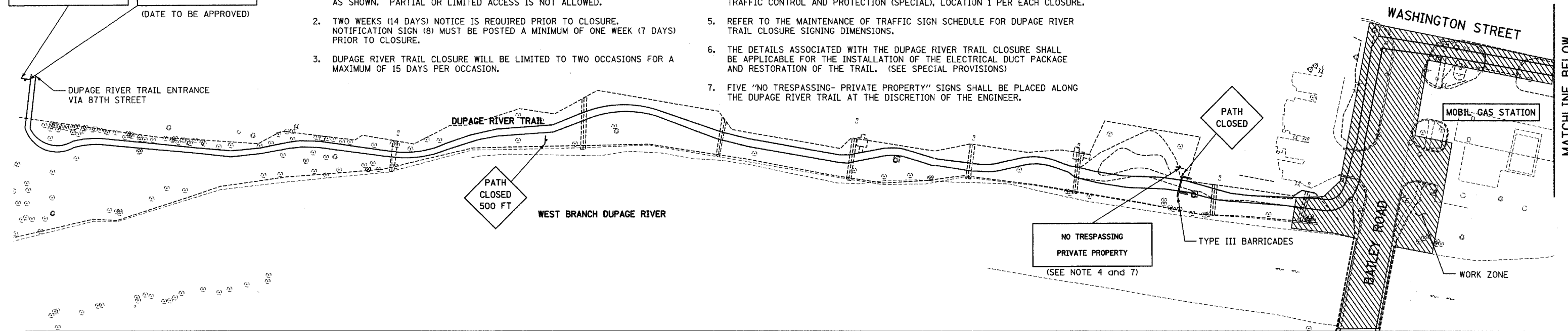
F.A.I.D. RTE.	SECTION	COUNTY	TOTAL SHEETS	SHEET NO.
1545	00-00115-00-BR	DuPAGE	97	13
STA. 1+31.77	TO STA. 5+50.00			
FED. ROAD DIST. NO.	ILLINOIS	FED. AID PROJECT		
CONTRACT 83961				

NOTES:

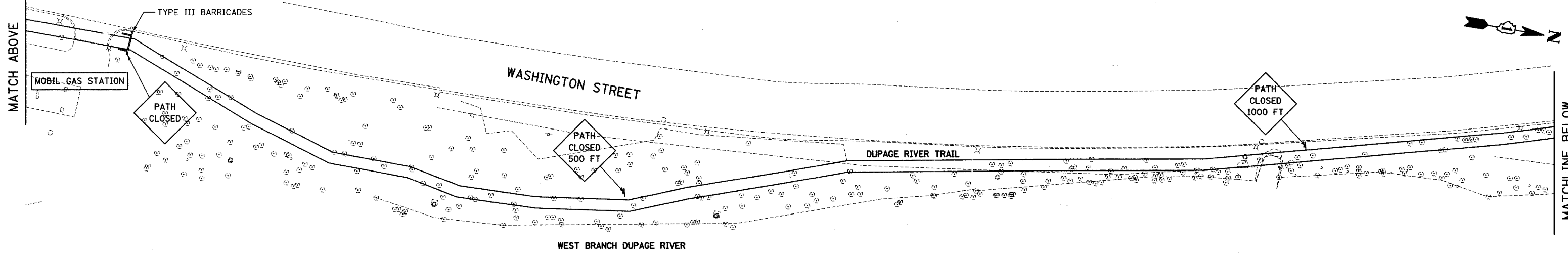
- DUPAGE RIVER TRAIL WILL ONLY BE ALLOWED FOR FULL CLOSURE AS SHOWN. PARTIAL OR LIMITED ACCESS IS NOT ALLOWED.
- TWO WEEKS (14 DAYS) NOTICE IS REQUIRED PRIOR TO CLOSURE. NOTIFICATION SIGN (8) MUST BE POSTED A MINIMUM OF ONE WEEK (7 DAYS) PRIOR TO CLOSURE.
- DUPAGE RIVER TRAIL CLOSURE WILL BE LIMITED TO TWO OCCASIONS FOR A MAXIMUM OF 15 DAYS PER OCCASION.
- THE COST OF THE DUPAGE RIVER TRAIL CLOSURE SIGNING SHALL BE PAID AS TRAFFIC CONTROL AND PROTECTION (SPECIAL), LOCATION 1 PER EACH CLOSURE.
- REFER TO THE MAINTENANCE OF TRAFFIC SIGN SCHEDULE FOR DUPAGE RIVER TRAIL CLOSURE SIGNING DIMENSIONS.
- THE DETAILS ASSOCIATED WITH THE DUPAGE RIVER TRAIL CLOSURE SHALL BE APPLICABLE FOR THE INSTALLATION OF THE ELECTRICAL DUCT PACKAGE AND RESTORATION OF THE TRAIL. (SEE SPECIAL PROVISIONS)
- FIVE "NO TRESPASSING- PRIVATE PROPERTY" SIGNS SHALL BE PLACED ALONG THE DUPAGE RIVER TRAIL AT THE DISCRETION OF THE ENGINEER.

8
 PATH CLOSED AT BAILEY ROAD
 NO ACCESS TO BAILEY ROAD
 BAILEY ROAD BRIDGE OVER DUPAGE RIVER WILL BE CLOSED STARTING ---/---/---
 (DATE TO BE APPROVED)

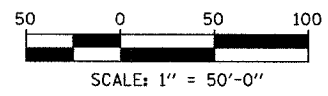
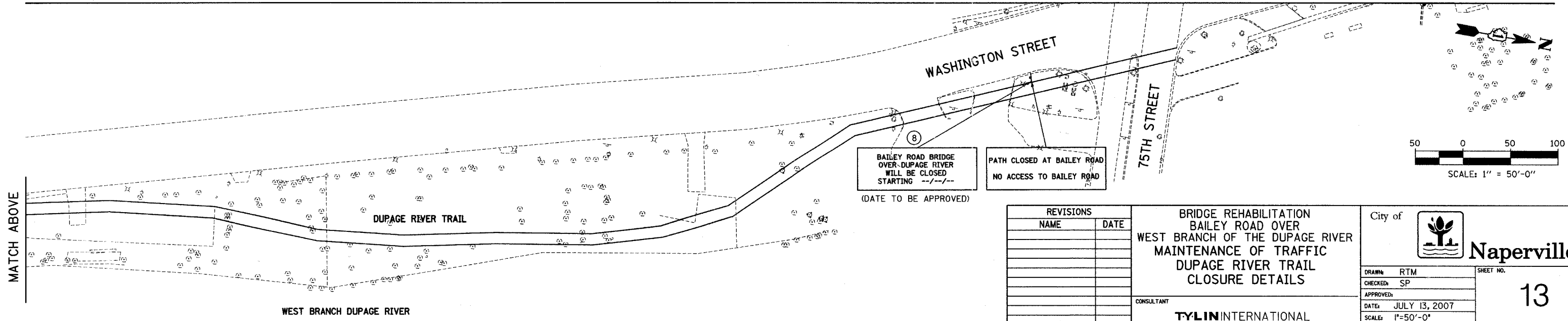
DUPAGE RIVER TRAIL ENTRANCE VIA 87TH STREET



MATCH ABOVE




MATCH ABOVE



REVISIONS	
NAME	DATE

BRIDGE REHABILITATION
 BAILEY ROAD OVER
 WEST BRANCH OF THE DUPAGE RIVER
 MAINTENANCE OF TRAFFIC
 DUPAGE RIVER TRAIL
 CLOSURE DETAILS

CONSULTANT
TYLIN INTERNATIONAL

City of  **Naperville**

DRAWN: RTM	SHEET NO.
CHECKED: SP	13
APPROVED:	
DATE: JULY 13, 2007	PROJECT NO.: BHM-8003(343)
SCALE: 1"=50'-0"	
JOB NO.: C-91-062-04	