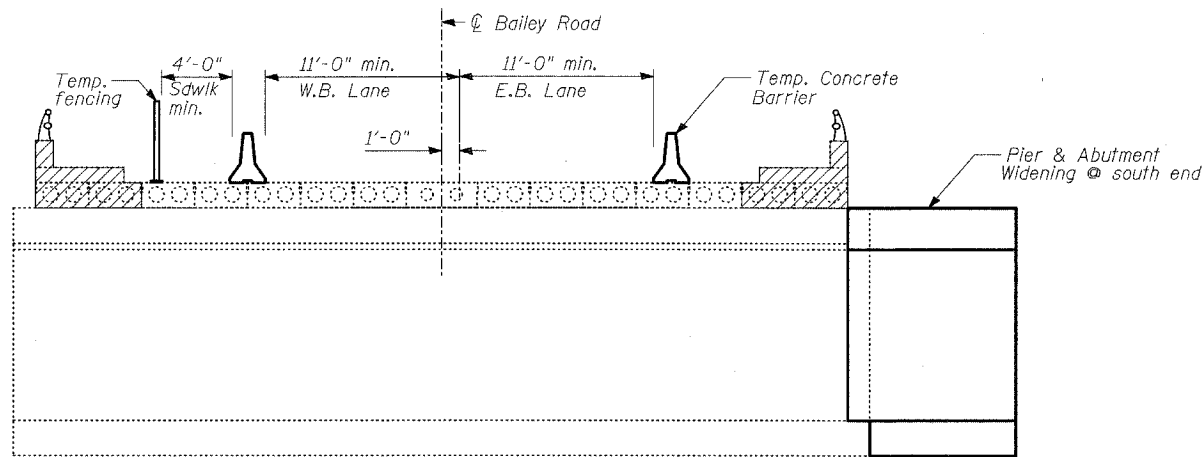
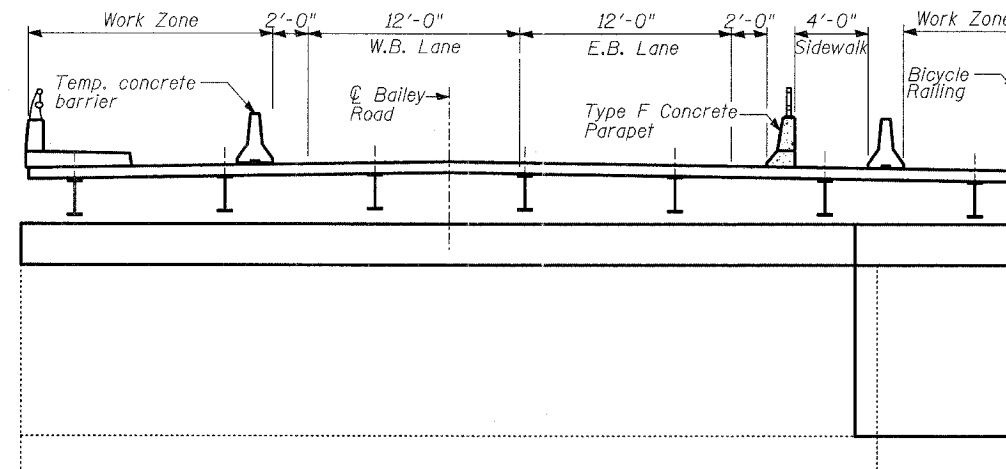


STATE OF ILLINOIS
DEPARTMENT OF TRANSPORTATION

ROUTE NO.	SECTION	COUNTY	TOTAL SHEETS	SHEET NO.	SHEET NO. - 5 39 - SHEETS
1545	•	DUPAGE	97	26	
FED. ROAD DIST. NO.		ILLINOIS	FED. AID PROJECT		CONTRACT NO. 83961
			• 00-00115-00-BR		



STAGE I
(Looking East- Pier shown)



STAGE III
(Looking East- Pier shown)

CONSTRUCTION SEQUENCE

STAGE I

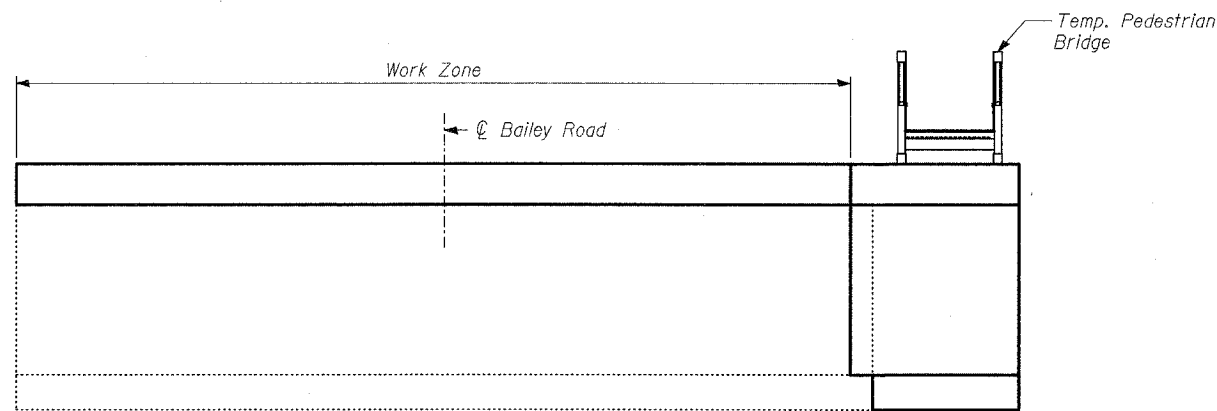
1. Prestage work will consist of removal of the existing sidewalks and barrier, along with beams 1, 2, 14 and 15. The removal of the PPC deck beams will be in accordance with the Special Provision "Removal of Existing Superstructures" along with details on Sheet 4.
2. The Contractor shall set up the Maintenance of Traffic as shown on the plans. Lane and sidewalk widths shown are minimum. The Contractor shall verify the location of the existing PPC deck beams prior to temporary concrete barrier installation. Slight adjustments to the locations of the concrete barrier may be required prior to anchorage of barrier to PPC deck beams to avoid drilling the anchorage bar into the deck beam void.
3. The Contractor shall perform the Substructure work as shown on Sheet 4: Abutment extensions and Wingwalls on the South end, Abutment reconstruction and Wingwalls on the North end.
4. Upon completion of substructure work, the Contractor shall install a temporary pedestrian bridge within the limits of the substructure widening on the south end.

STAGE II

1. Vehicular traffic will be detoured during Stage II work.
2. The Contractor shall remove the remaining PPC beams.
3. The bearing seats for the Piers will be reconstructed. The Abutments will be rehabilitated as shown on the Plans.
4. The temporary pedestrian bridge will be removed prior to the placement of the new beams.
5. Erect the new beams, place the deck and Type F Concrete Parapet.

STAGE III

1. Set up the Maintenance of Traffic details as shown on the Plans.
2. Work to be performed shall be the installation of the Bicycle Railing on the South edge of deck along with Sidewalk and Barrier installation on the North side.



STAGE II
(Looking East- Pier shown)

TYLIN INTERNATIONAL

DESIGNED	- SP
CHECKED	- PF
DRAWN	- SP
CHECKED	- PF

STAGE CONSTRUCTION - II

BAILEY ROAD OVER THE
WEST BRANCH OF THE DUPAGE RIVER
FAU 1545
SECTION 00-00115-00-BR STA. 2+99.15
DUPAGE COUNTY
S.N. 022-3028