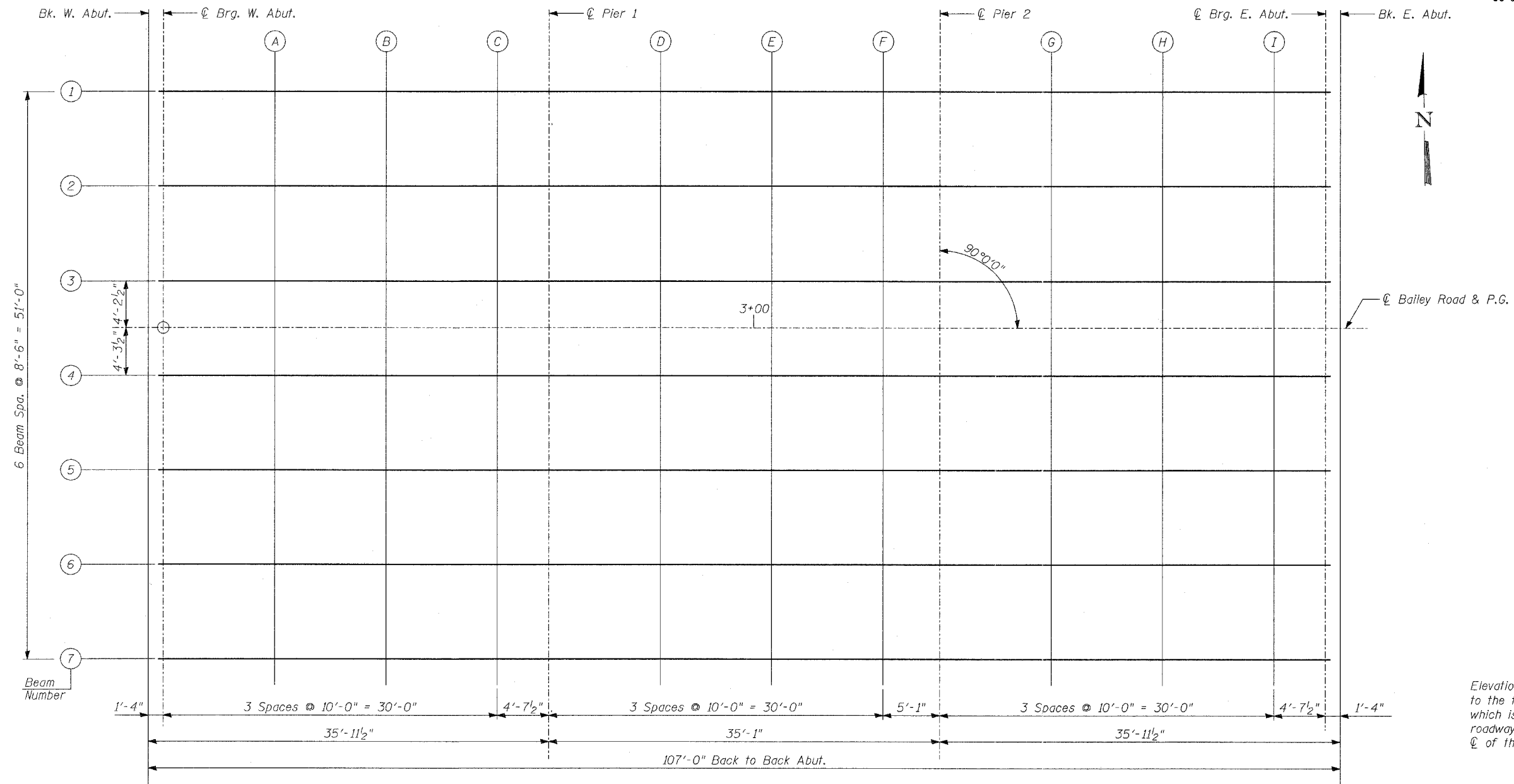


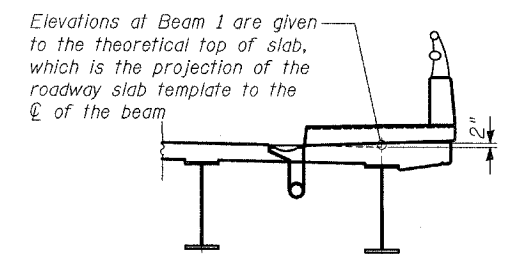
STATE OF ILLINOIS  
DEPARTMENT OF TRANSPORTATION

ROUTE NO.	SECTION	COUNTY	TOTAL SHEETS	SHEET NO.
1545	•	DUPAGE	97	28
FED. ROAD DIST. NO.	ILLINOIS	FED. AID PROJECT		
			SHEET NO. - 7 39 - SHEETS	

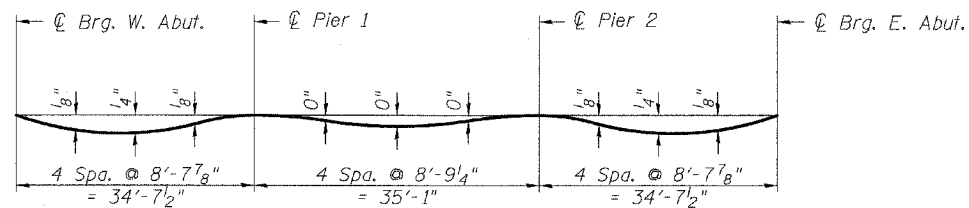
• 00-00115-00-BR CONTRACT NO. 83961



PLAN



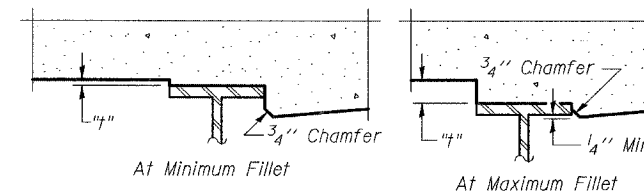
LOCATION OF ELEVATIONS AT BEAM 1



DEAD LOAD DEFLECTION DIAGRAM

(Includes weight of concrete only)

Note:  
The above deflections are not to be used in the field if the engineer is working from the grade elevations adjusted for dead load deflections.



FILLET HEIGHTS

To determine "t": After all structural steel has been erected, elevations of the top flanges of the beams shall be taken at intervals shown below. These elevations subtracted from the "Theoretical Grade Elevations Adjusted for Dead Load Deflection" shown below, minus slab thickness, equals the fillet heights "t" above top flange of beams.

TYLIN INTERNATIONAL

DESIGNED	- PL
CHECKED	- PF
DRAWN	- PL
CHECKED	- PF

TOP OF SLAB ELEVATIONS - LAYOUT

BAILEY ROAD OVER THE  
WEST BRANCH OF THE DUPAGE RIVER  
FAU 1545  
SECTION 00-00115-00-BR STA. 2+99.15  
DUPAGE COUNTY  
S.N. 022-3028