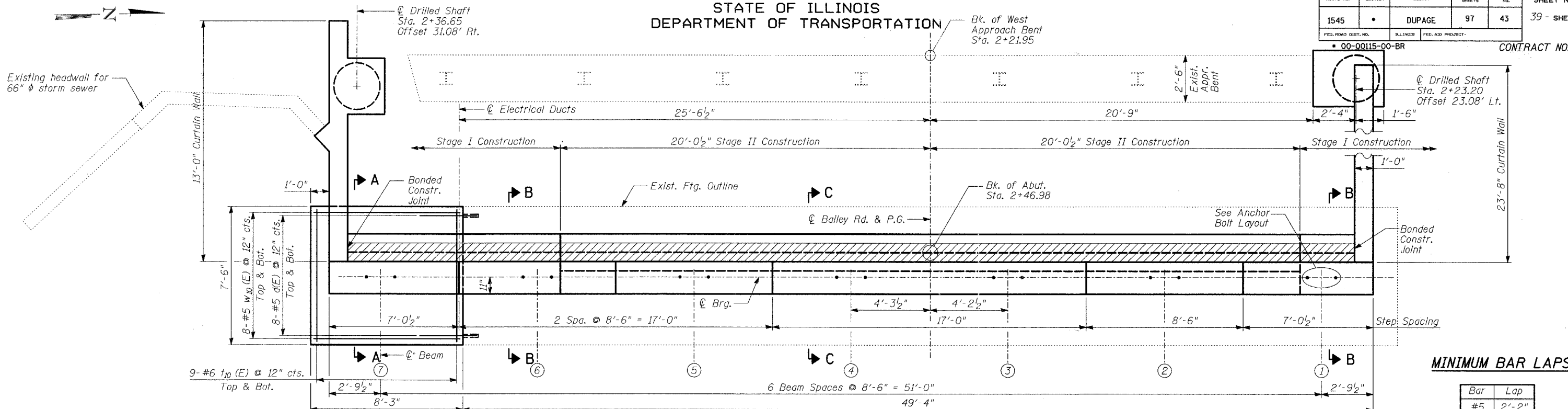


STATE OF ILLINOIS
DEPARTMENT OF TRANSPORTATION

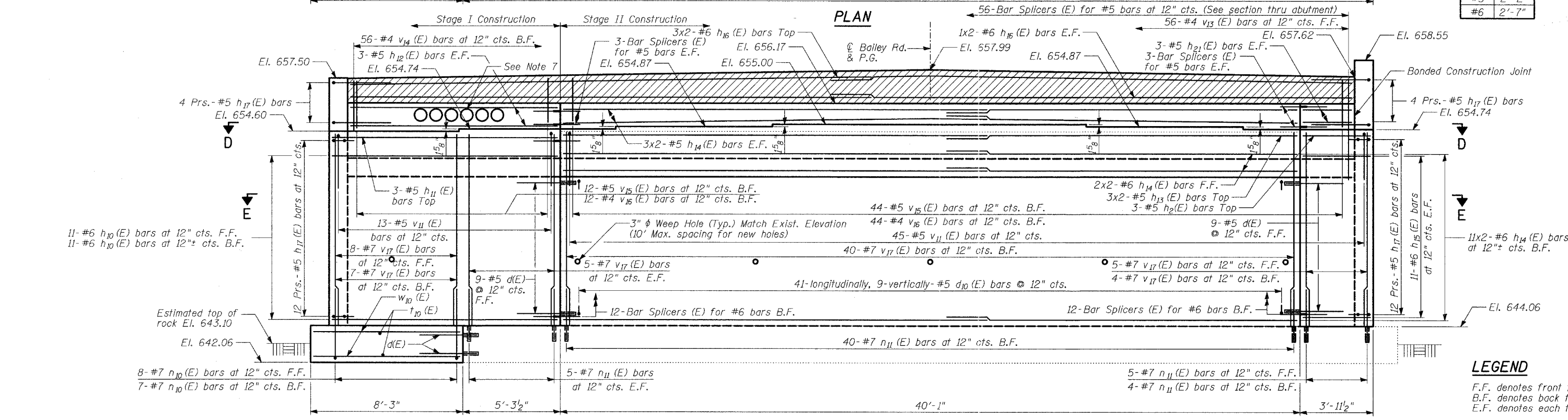
ROUTE NO.	SECTION	COUNTY	SHEETS	SHEET NO.	SHEET NO. - 22 39 - SHEETS
1545	*	DUPAGE	97	43	
FED. ROAD DIST. NO.		BILLINGS	FED. AID PROJECT	CONTRACT NO. 83961	
* 00-00115-00-BR					



MINIMUM BAR LAPS

Bar	Lap
#5	2'-2"
#6	2'-7"

PLAN



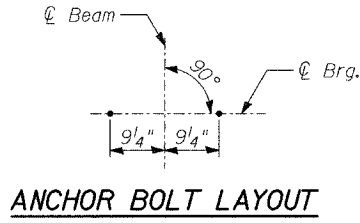
ELEVATION

NOTES:

- Space reinforcement in cap to miss anchor bolts.
- All edges shall have standard 3/4" chamfers.
- Epoxy grout #5 bars in 9" deep minimum drilled holes and #7 bars in 12" deep minimum drilled holes according to Article 584 of the Standard Specifications. The grout and method of application shall be approved by the Engineer.
- Bars indicated thus: 3x2-#5 etc. Indicates 3 lines of bars with 2 lengths per line.
- For Sections A-A, B-B, C-C, D-D and E-E see Sheet 24.
- For details of reinforcement and Bill of Material see Sheet 28.
- 8" PVC Pipe Sleeve for 6" PVC Electrical conduits. Price of 8" PVC shall be included in the cost of "Concrete Structures".
- Pour steps monolithically with cap.
- Allowable Bearing Pressure for footing=12,000 psf. Allowable Bearing Pressure for drilled shafts is 20 tons/sq.ft

TYLIN INTERNATIONAL

DESIGNED	- PL
CHECKED	- SP
DRAWN	- PL
CHECKED	- SP



WEST ABUTMENT

BAILEY ROAD OVER THE
WEST BRANCH OF THE DUPAGE RIVER
FAU 1545
SECTION 00-00115-00-BR STA. 2+99.15
DUPAGE COUNTY
S.N. 022-3028