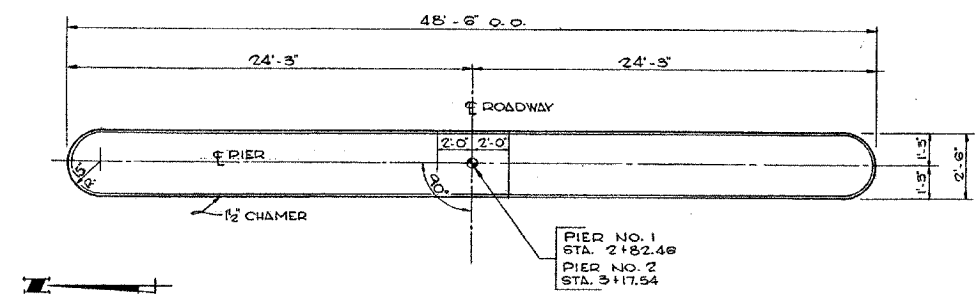


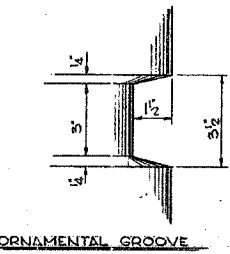
STATE OF ILLINOIS
DEPARTMENT OF TRANSPORTATION

ROUTE NO.	SECTION	COUNTY	TOTAL SHEETS	SHEET NO.
1545	*	DUPAGE	97	64
FED. ROAD DIST. NO.	ILLINOIS	FED. AID P.C. SIZE	SHEETS	
			CONTRACT NO. 83961	

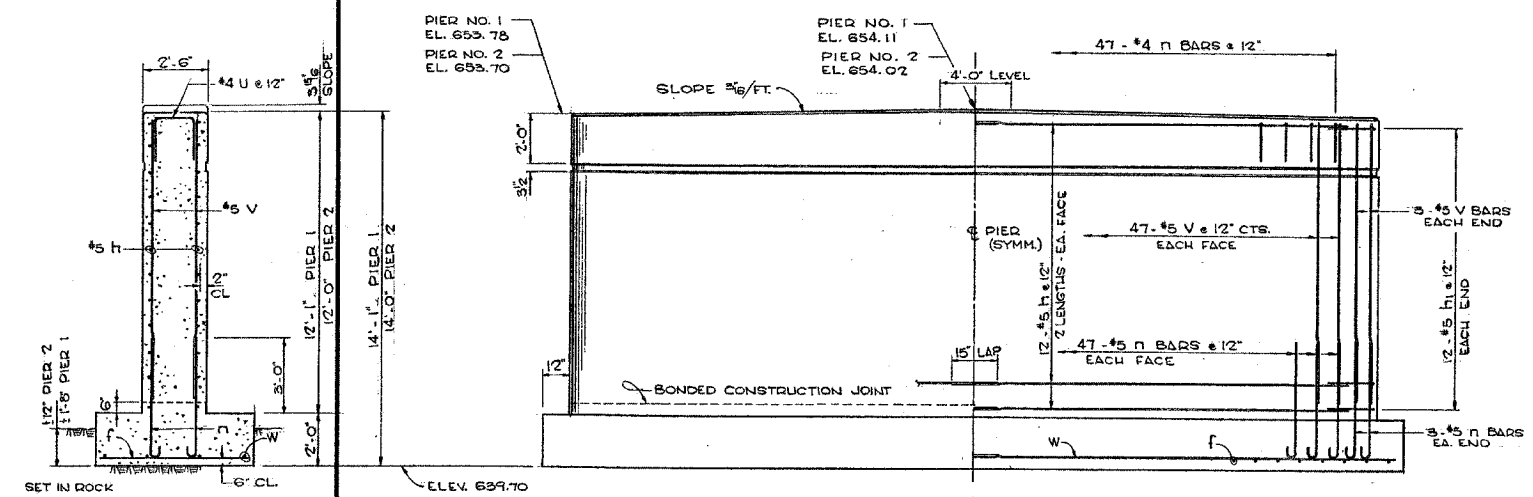
SECTION	ROUTE NO.	SHEET
79TH ST BRIDGE		1 OF 13
COUNTY	ROAD DISTRICT	
DUPAGE	LISLE	



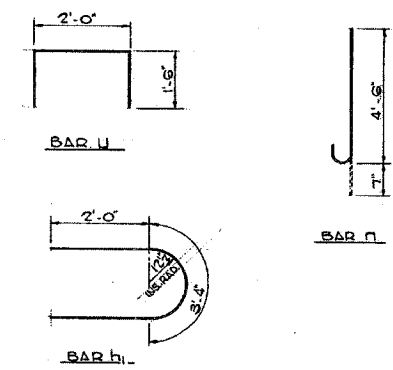
TOP VIEW
NO SCALE



ORNAMENTAL GROOVE

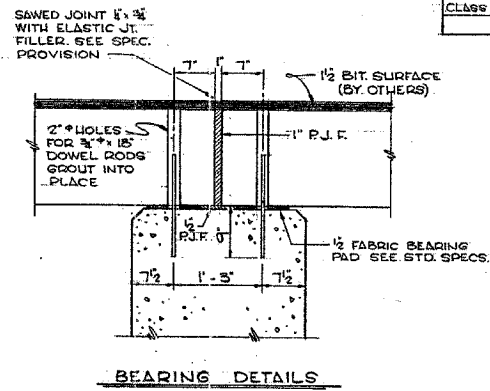


ELEVATION - PIER 1 & 2
NO SCALE

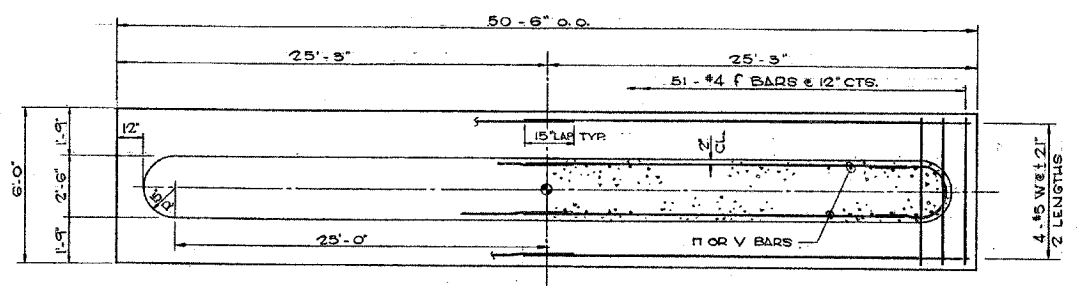


BILL OF MATERIAL - 2 PIERS

BAR	NO.	SIZE	LENGTH	SHAPE
f	102	#4	5'-6"	—
h	96	#5	25'-6"	—
h ₁	46	#5	7'-4"	U
n	200	#5	5'-1"	—
u	94	#4	5'-0"	U
v	200	#5	11'-3"	—
w	16	#5	25'-9"	—
CLASS X CONCRETE CU. YDS.				153.2
REINFORCEMENT BARS LBS.				7240
ROCK EXC. FOR STRUCT. CU. YDS.				28.1
CLASS B EXC. FOR STRUCT. CU. YDS.				111.0



BEARING DETAILS



FOOTING PLAN
NO SCALE

PIER DETAILS
79TH STREET BRIDGE
LISLE ROAD DISTRICT
DUPAGE COUNTY

SECTION THRU PIER

2970 LBS. PER SQ. FT.
MAX SOIL PRESSURE

FOR INFORMATION ONLY

NOTE:
ELEVATIONS SHOWN ON EXISTING PLANS ARE ON A
DIFFERENT VERTICAL DATUM THAN CONTRACT PLANS.

TYLIN INTERNATIONAL

DESIGNED	-	SNB
CHECKED	-	
DRAWN	-	SNB
CHECKED	-	

EXISTING PIER DETAILS

BAILEY ROAD OVER THE
WEST BRANCH OF THE DUPAGE RIVER
FAU 1545
SECTION 00-00115-00-BR STA. 2+99.15
DUPAGE COUNTY
S.N. 022-3028