

PLAN VIEW WITH ALL FACILITIES SHOWN
(SEE PAGE 5 AND 6 FOR DETAIL LAY OUT OF DUCTBANK)

F.A.U. RTE.	SECTION	COUNTY	TOTAL SHEETS	SHEET NO
1545	00-00115-00-BR	DUPAGE	97	70
STA. 1+31.77		TO STA. 5+50.00		
FED. ROAD DIST. NO.	ILLINOIS	FED. AID PROJECT		

CONTRACT 83961

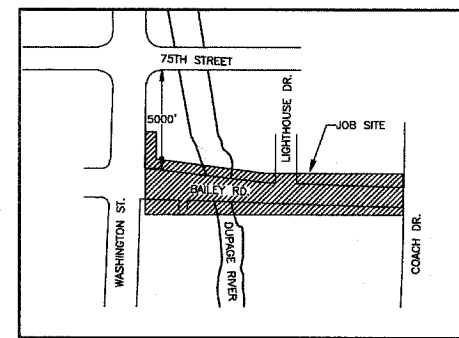
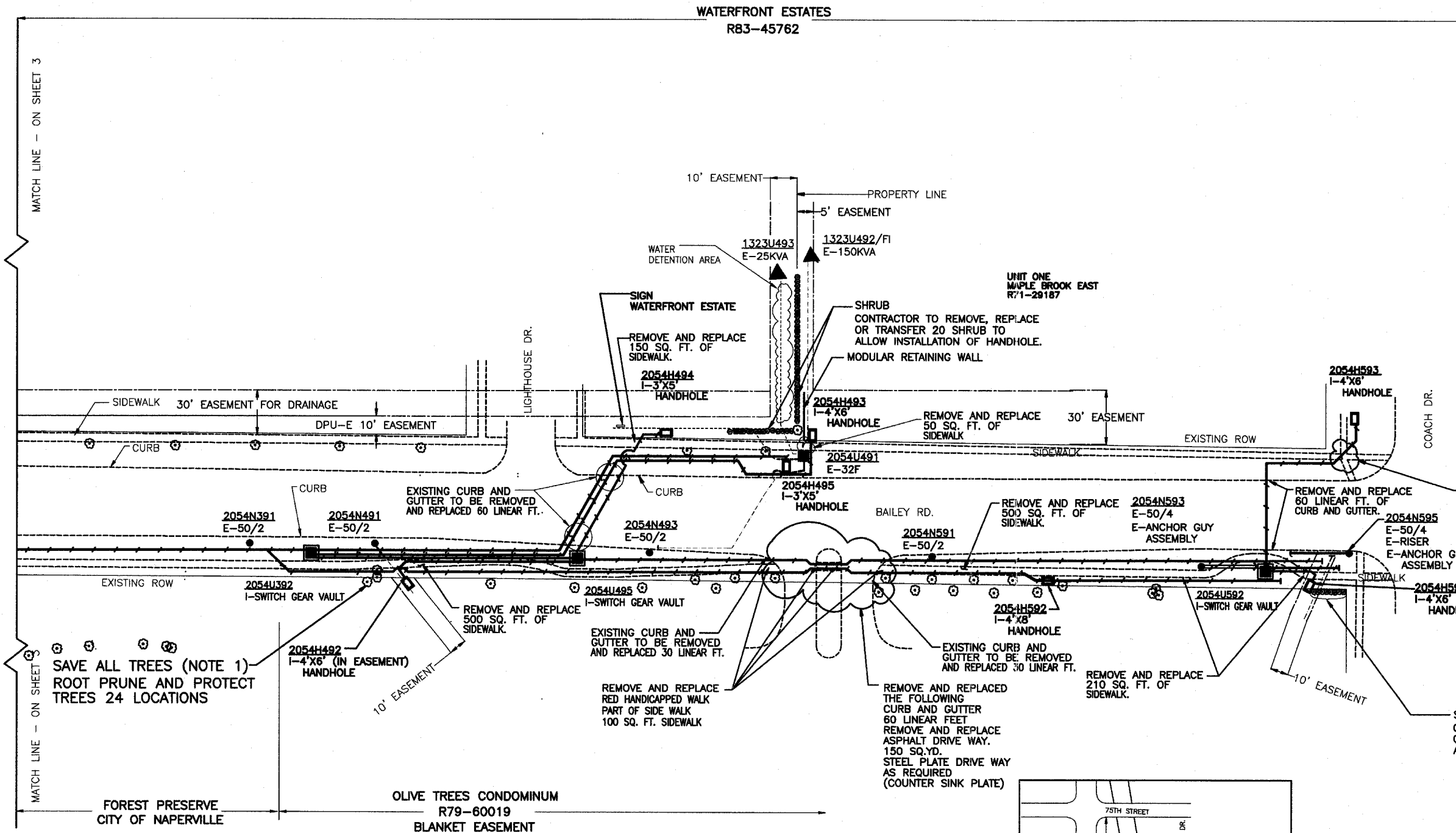
LEGEND

EXISTING
OVERHEAD

- E-POLE
- E-3-4/0 AAA PRI.
- E-ANCHOR & GUY ASSEMBLY
- E-SW. MOD., FUSE MOD.
- ▲ E-TRANSFORMER
- E-HANDHOLE
- E-1-1/0 STR. AL.
- - - E-3-4/0 STR. AL.
- - - E-3-1/0 STR. AL.
- E-DUCT BANK
- - - E-CURB/SIDEWALK
- ⊙ E-TREE/SHRUB

INSTALL
UNDERGROUND

- I-SWITCH GEAR VAULT
- I-HANDHOLE
- I-DUCT BANK



LOCATION MAP
N.T.S.

CITY OF NAPERVILLE/DEPARTMENT OF PUBLIC UTILITIES - ELECTRIC			
CALL J.U.L.I.E. 48 HRS. PRIOR TO CONSTRUCTION			
PROJECT TITLE	JOB NO.	JOB FILE NO.	
BAILEY RD. BRIDGE DUCTBANK INSTALLATION	2054/1323	0001000004000	
PROJECT DESCRIPTION	WORK NO.	PROJECT NO.	
COORDINATED WITH BRIDGE IMPROVEMENT	JK	EU12-06-04	
DATE	WORK PERIOD NO.	DATE	
05-18-07			
DESIGNED	NO.	DATE	
RFB			
ENGINEER	APPV	DATE	
REVISION		SCALE	
		1"=30'	