

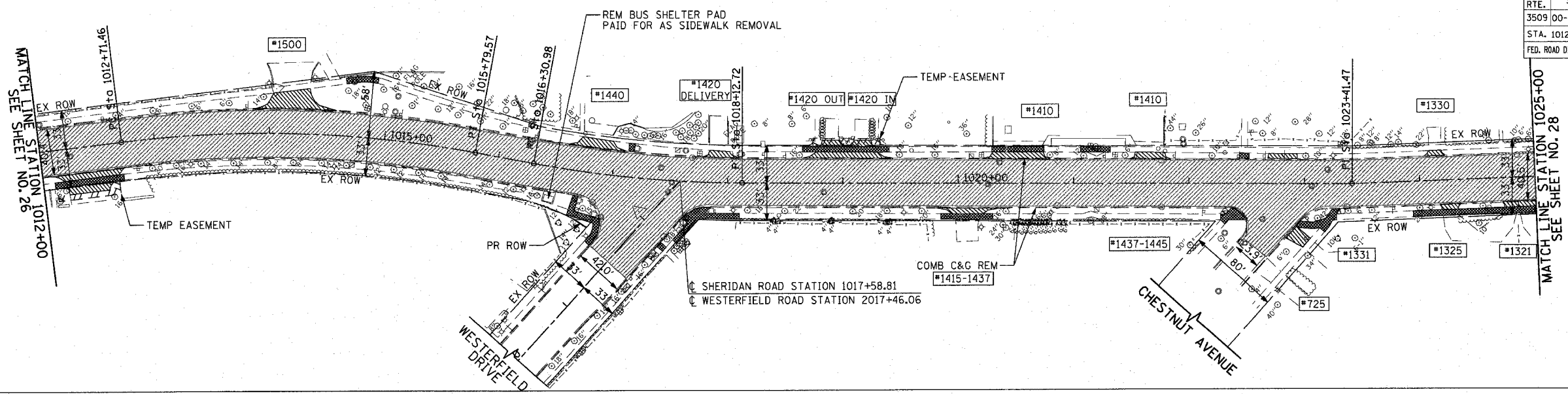
F.A.U. RTE.	SECTION	COUNTY	TOTAL SHEETS	SHEET NO.
3509	00-00173-00-FP	COOK	246	27
STA. 1012+00		TO STA. 1025+00		
FED. ROAD DIST. NO. 7 ILLINOIS FED. AID PROJECT				

PLOT DATE = 7/12/2007
 FILE NAME = g:\cadd\83964\road\sheet\p027.dwg
 PLOT SCALE = 4.5/1000 = 1/222.22"
 USER NAME = b.julian

DATE	BY	REVISION

DATE	BY	REVISION

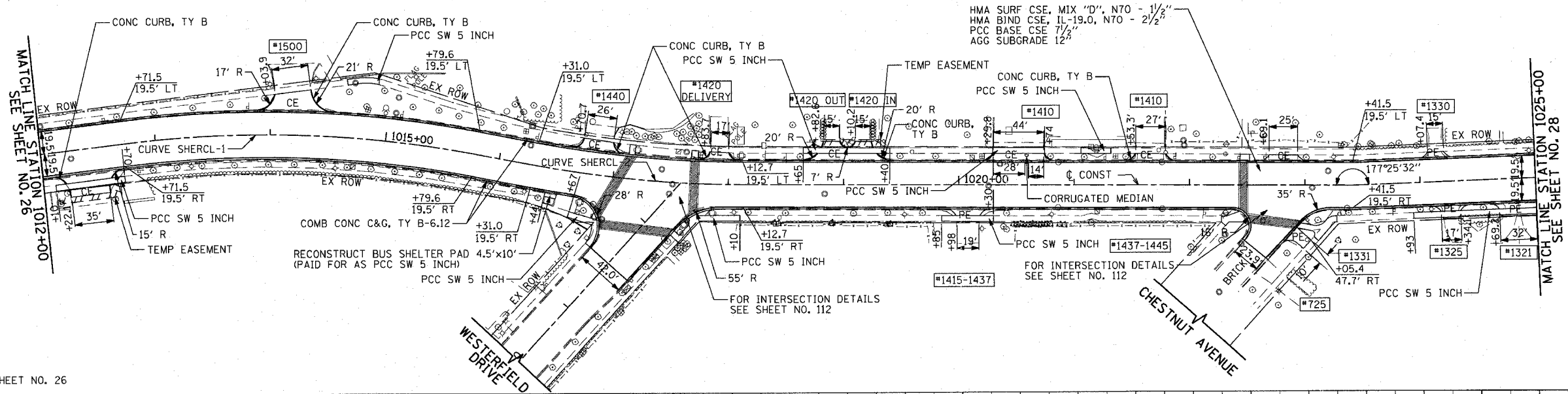
1051 PERMETER DRIVE, SUITE 1025
 SCHAMBERG, ILLINOIS 60173
 (847) 868-8600



EXISTING

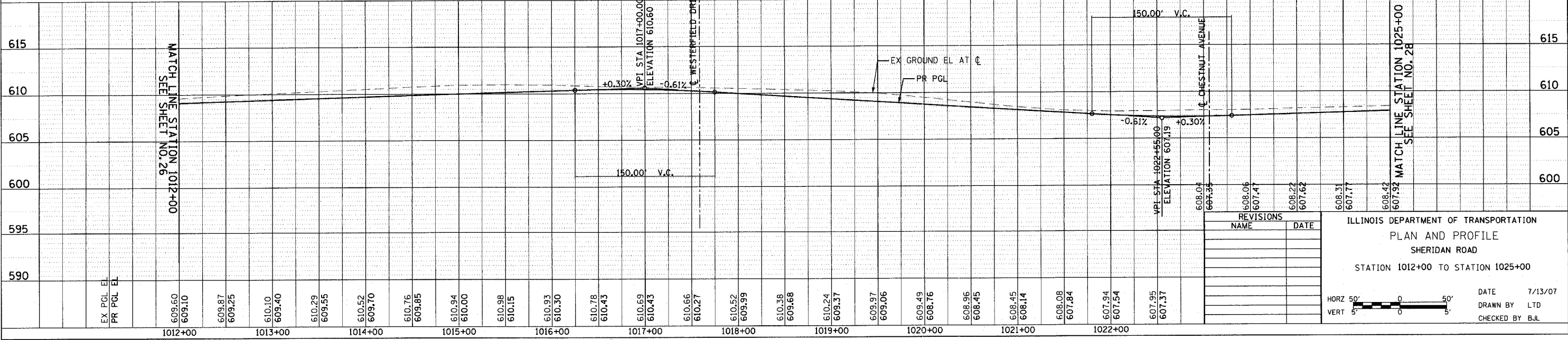
CURVE SHERCL-1
 PI STA = 1014+26.74
 $\Delta = 17^\circ 36' 35''$ (RT)
 $R = 1,002.50'$
 $L = 155.28'$
 $T = 308.11'$
 $E = 11.95'$
 $e = 2.00\%$
 $T.R. = 34'$
 $S.E. RUN. = 34'$
 PC STA = 1012+71.46
 PT STA = 1015+79.57

CURVE SHERCL-2
 PI STA = 1017+22.10
 $\Delta = 10^\circ 23' 12''$ (LT)
 $R = 1,002.50'$
 $L = 91.12'$
 $T = 181.74'$
 $E = 4.13'$
 $e = 0.02\%$
 $T.R. = 25.7'$
 $S.E. RUN. = 25.7'$
 PC STA = 1016+30.98
 PT STA = 1018+12.72



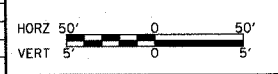
PROPOSED

FOR LEGEND AND NOTES SEE SHEET NO. 26



REVISIONS	NAME	DATE

ILLINOIS DEPARTMENT OF TRANSPORTATION
 PLAN AND PROFILE
 SHERIDAN ROAD
 STATION 1012+00 TO STATION 1025+00



DATE 7/13/07
 DRAWN BY LTD
 CHECKED BY BJL