

PLOT DATE = 7/12/2007
 FILE NAME = g:\c\895\0895\road\shades\p12.dwg
 PLOT SCALE = 41.9999 / IN.
 USER NAME = bjohnson

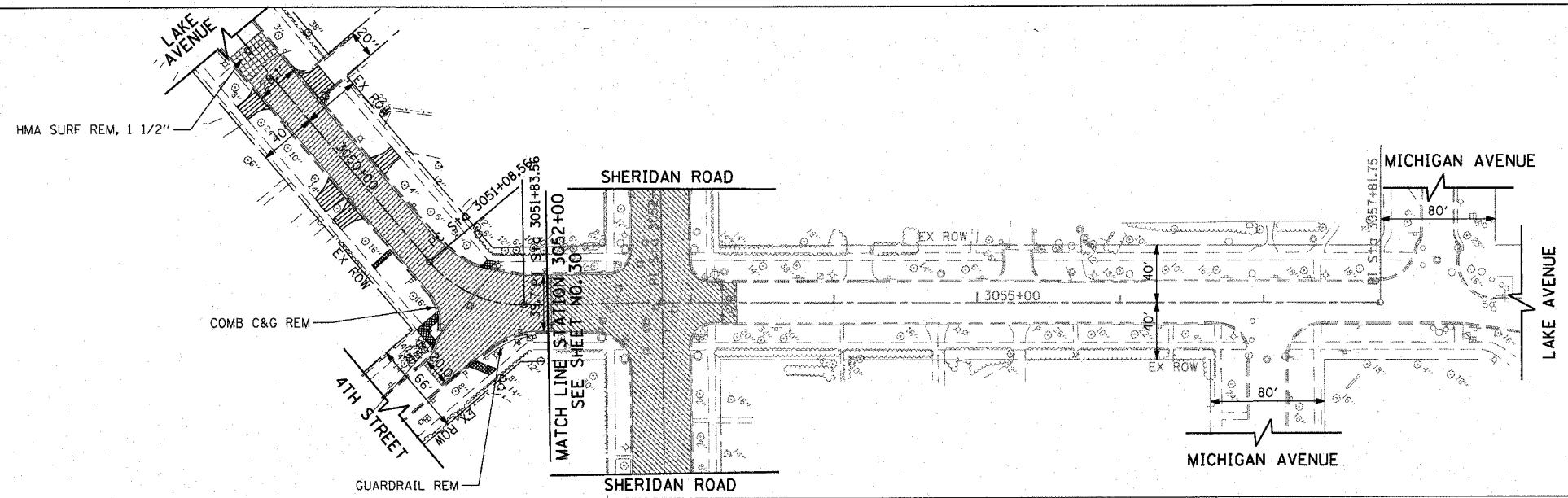
PLAN	DATE	BY
REVIEWED		
ALIGNED		
RT. OF WAY CHECKED		
ADD FILE NAME		

PROFILE	DATE	BY
REVIEWED		
PLotted		
BLK. NO. 10		
STRUCTURE		
NOTATIONS		

1051 PERMETER DRIVE, SUITE 1026
 SCHALMBURG, ILLINOIS 60173
 (817) 605-8900

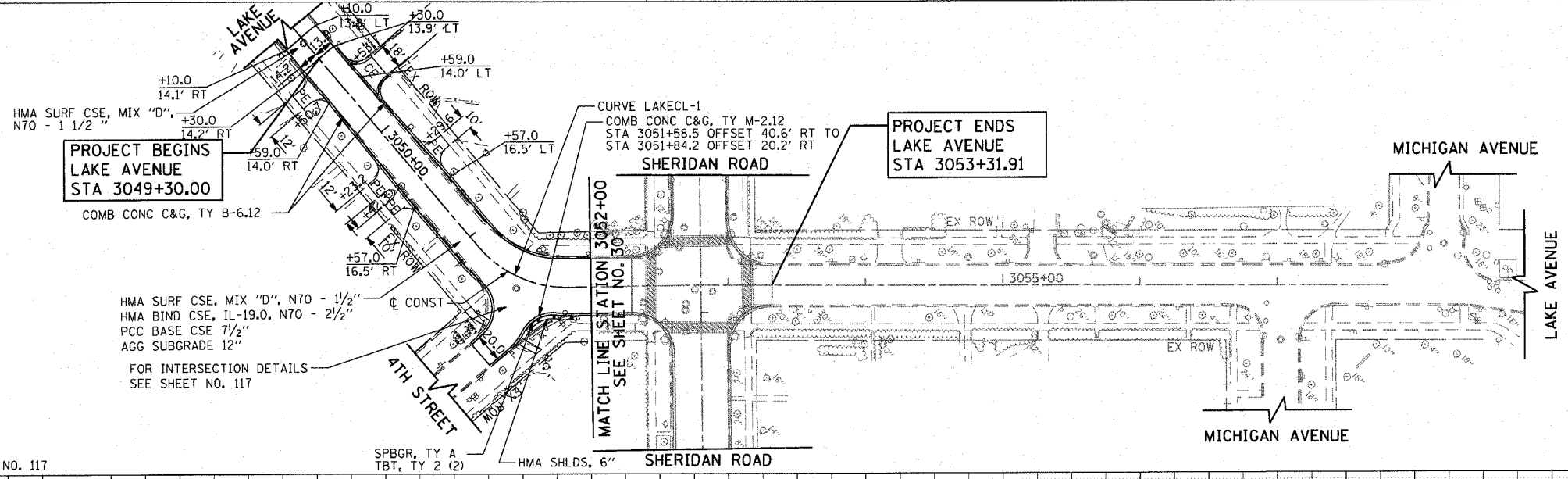


CONTRACT NO. 83964				
F.A.U. RTE.	SECTION	COUNTY	TOTAL SHEETS	SHEET NO.
3509	00-00173-00-FP	COOK	246	37
STA. 3049+00		TO STA. 3057+82		
FED. ROAD DIST. NO. 7 ILLINOIS FED. AID PROJECT				



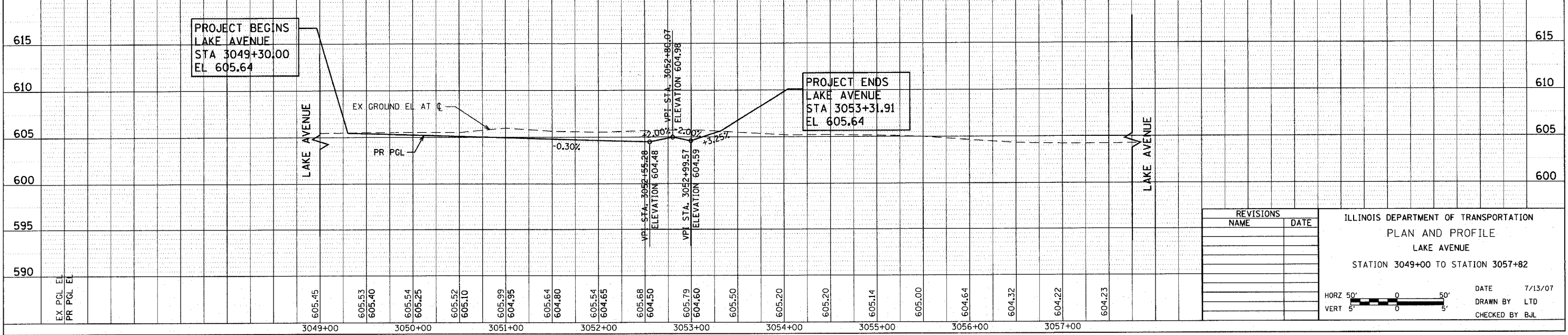
EXISTING

CURVE LAKECL-1
 PT STA. = 3051+48.70
 Δ = 50° 33' 09" (LT)
 R = 85.00'
 T = 40.14'
 L = 75.00'
 Δ = 9.00'
 Δ = 2.00%
 Δ = 34'
 Δ = 34'
 PC STA = 3051+08.56
 PT STA = 3051+83.56



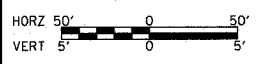
PROPOSED

FOR LEGEND AND NOTES SEE SHEET NO. 26
 FOR SUPERELEVATION DETAILS SEE SHEET NO. 117



REVISIONS	
NAME	DATE

ILLINOIS DEPARTMENT OF TRANSPORTATION
 PLAN AND PROFILE
 LAKE AVENUE
 STATION 3049+00 TO STATION 3057+82



DATE 7/13/07
 DRAWN BY LTD
 CHECKED BY BJL