

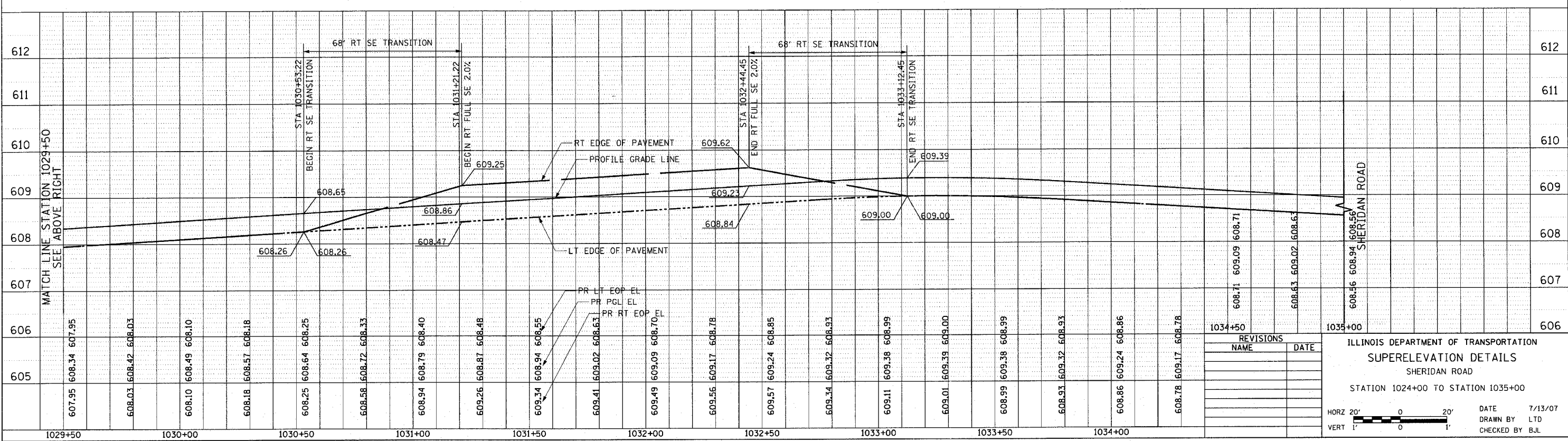
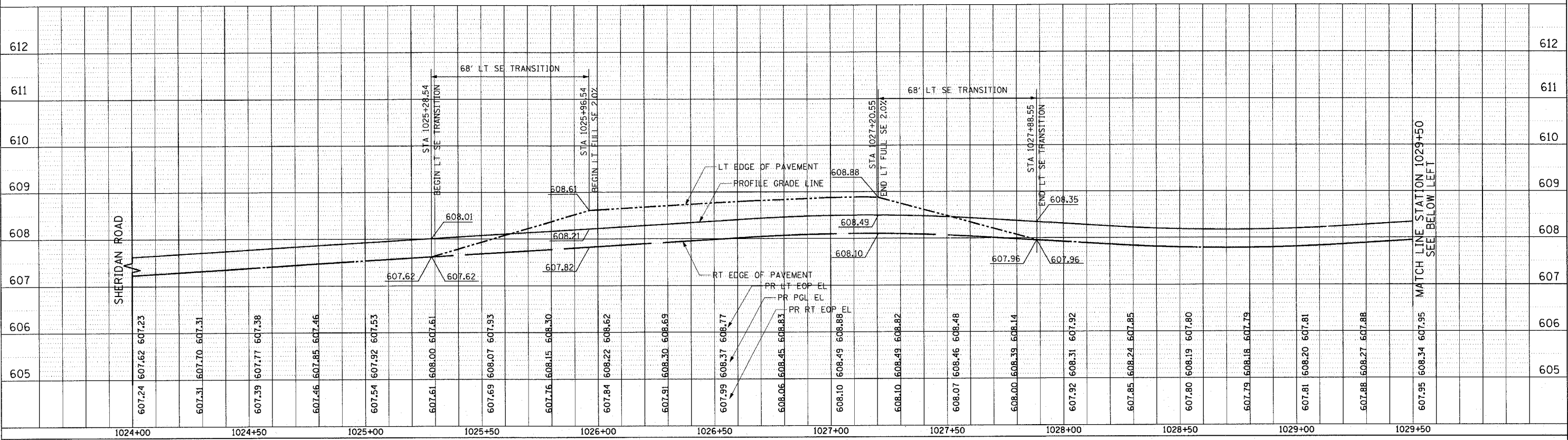
F.A.U. RTE.	SECTION	COUNTY	TOTAL SHEETS	SHEET NO.
3509	00-00173-00-FP	COOK	246	39
STA.		TO STA.		
FED. ROAD DIST. NO.		ILLINOIS FED. AID PROJECT		

PLOT DATE = 7/12/2007  
 FILE NAME = g:\cadd\0605\road\sheet\51E1022.dwg  
 USER NAME = b.j.ltd

PLAN	DATE	BY
SURVEYED NOTE BOOK ALIGNED CHECKED REVISIONS NO.		

PROFILE	DATE	BY
SURVEYED GRADES CHECKED REVISIONS NO.		

1051 PERIMETER DRIVE, SUITE 1025  
 SCHAMBERG, ILLINOIS 60173  
 (847) 605-9600  
**TransSystems**



REVISIONS	
NAME	DATE

ILLINOIS DEPARTMENT OF TRANSPORTATION  
**SUPERELEVATION DETAILS**  
 SHERIDAN ROAD  
 STATION 1024+00 TO STATION 1035+00

HORZ 20' 0 20'  
 VERT 1' 0 1'

DATE 7/13/07  
 DRAWN BY LTD  
 CHECKED BY B.J.L.